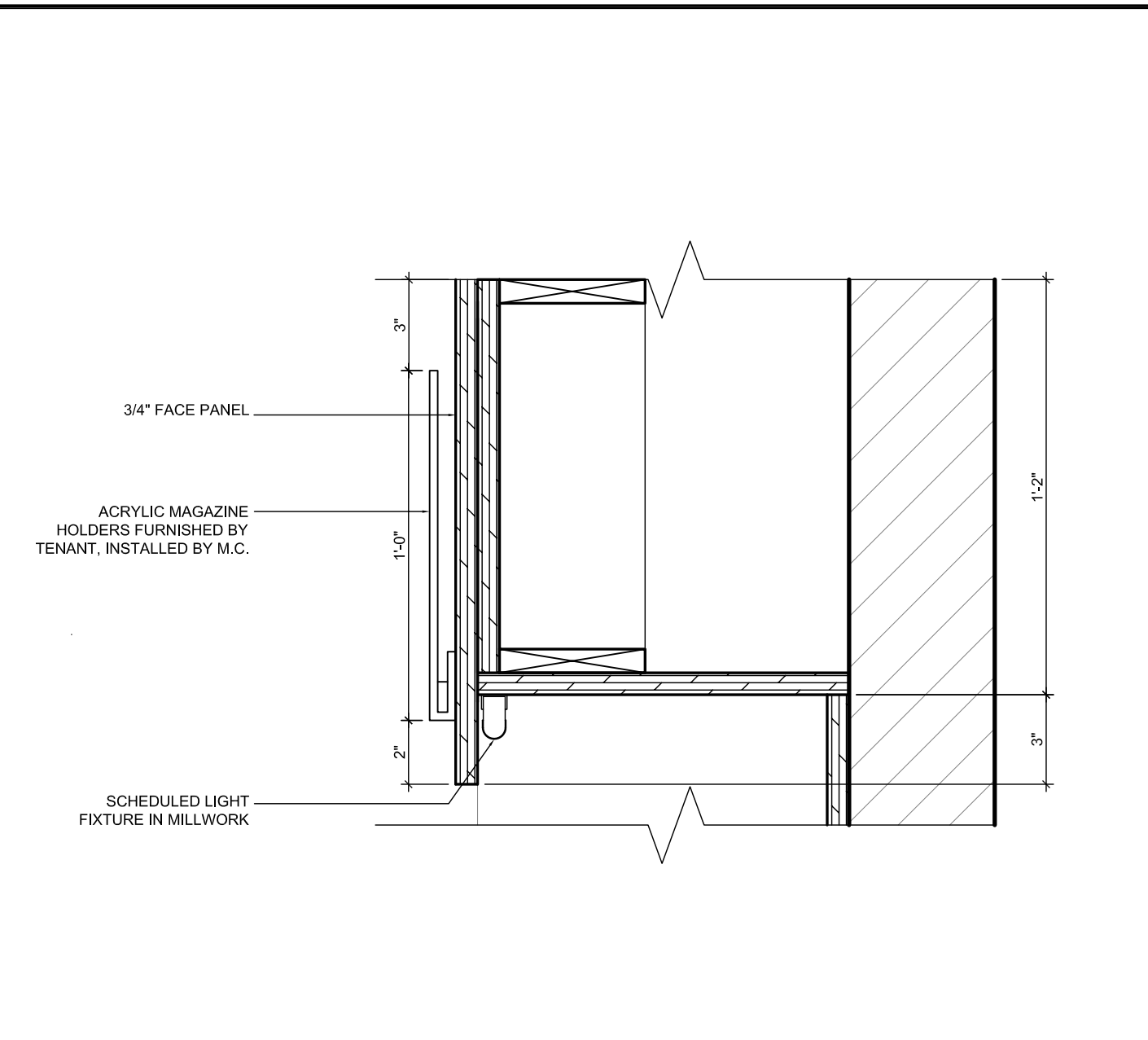
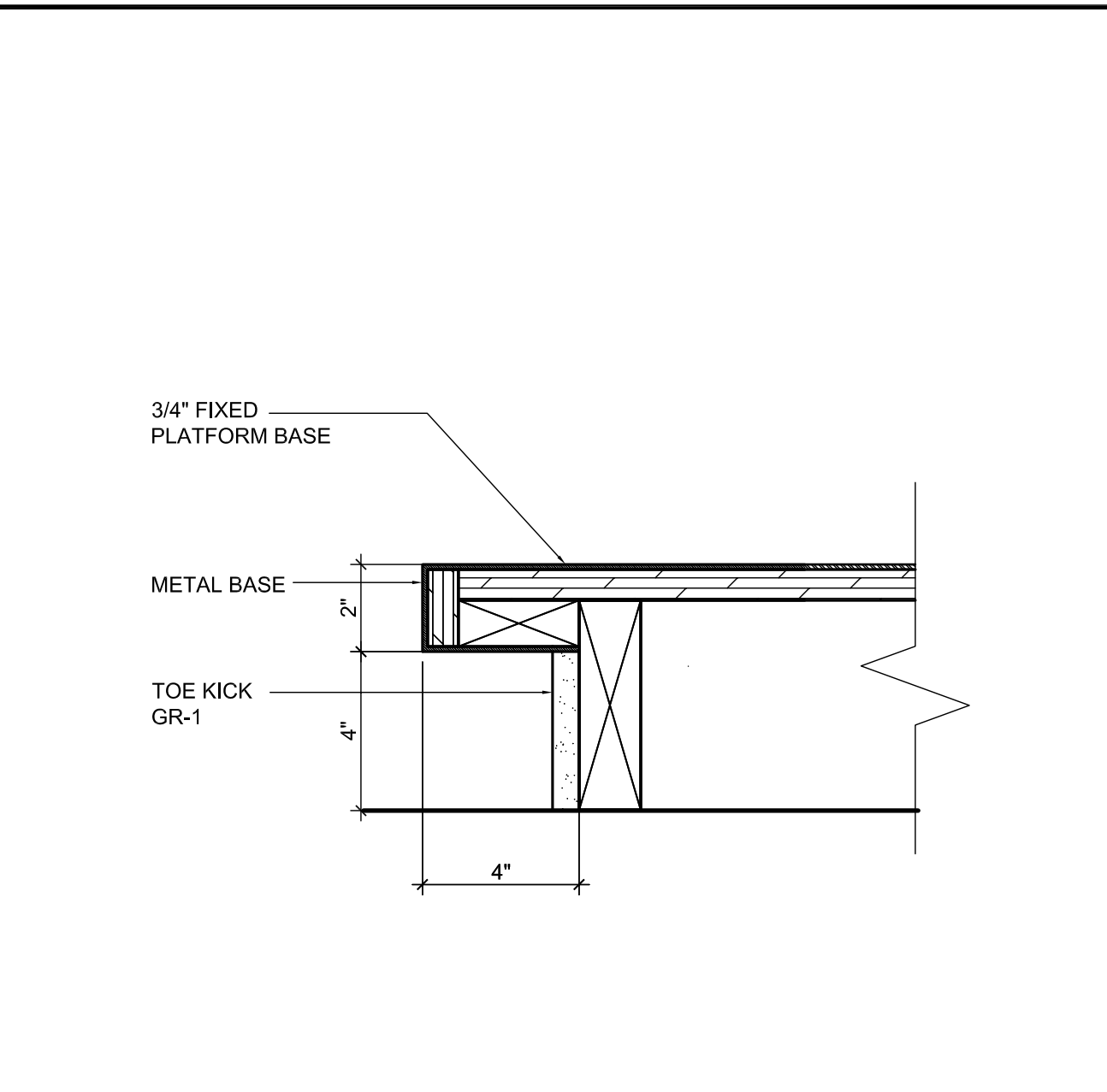


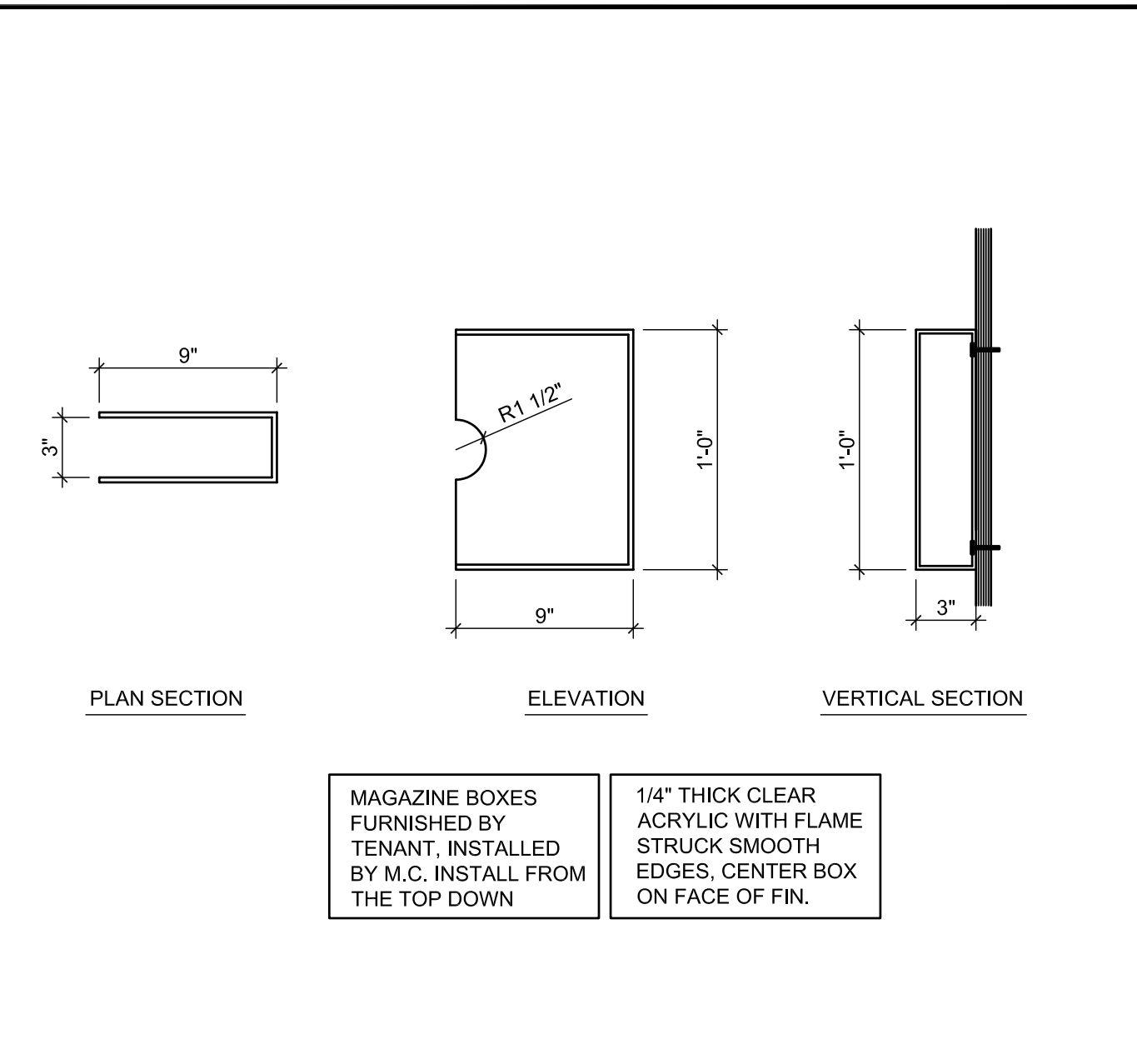
HORIZONTAL SECTION THRU FEATURE WALL 1" = 1'-0" 8



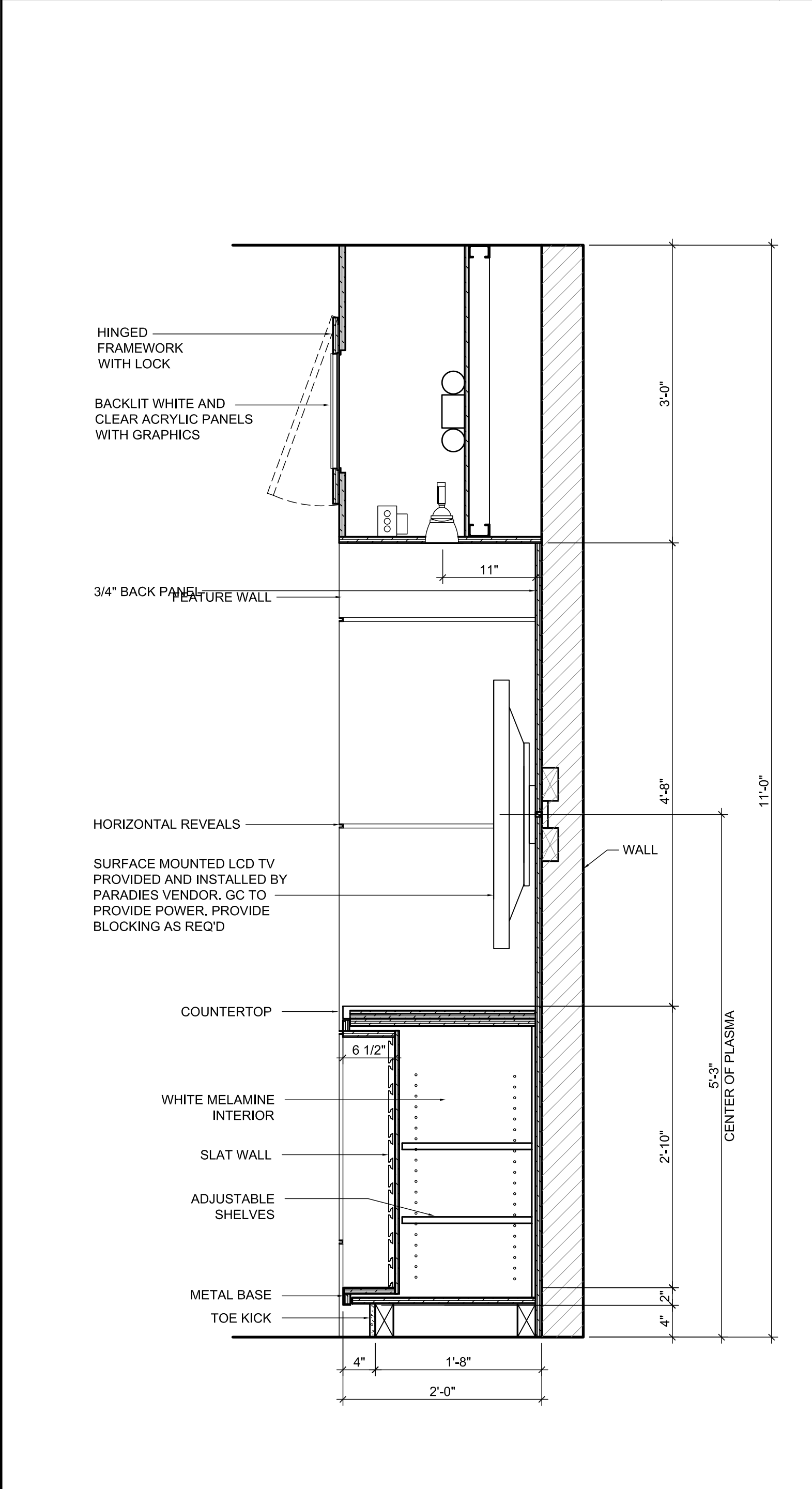
MAGAZINES VALANCE DETAIL 3" = 1'-0" 7



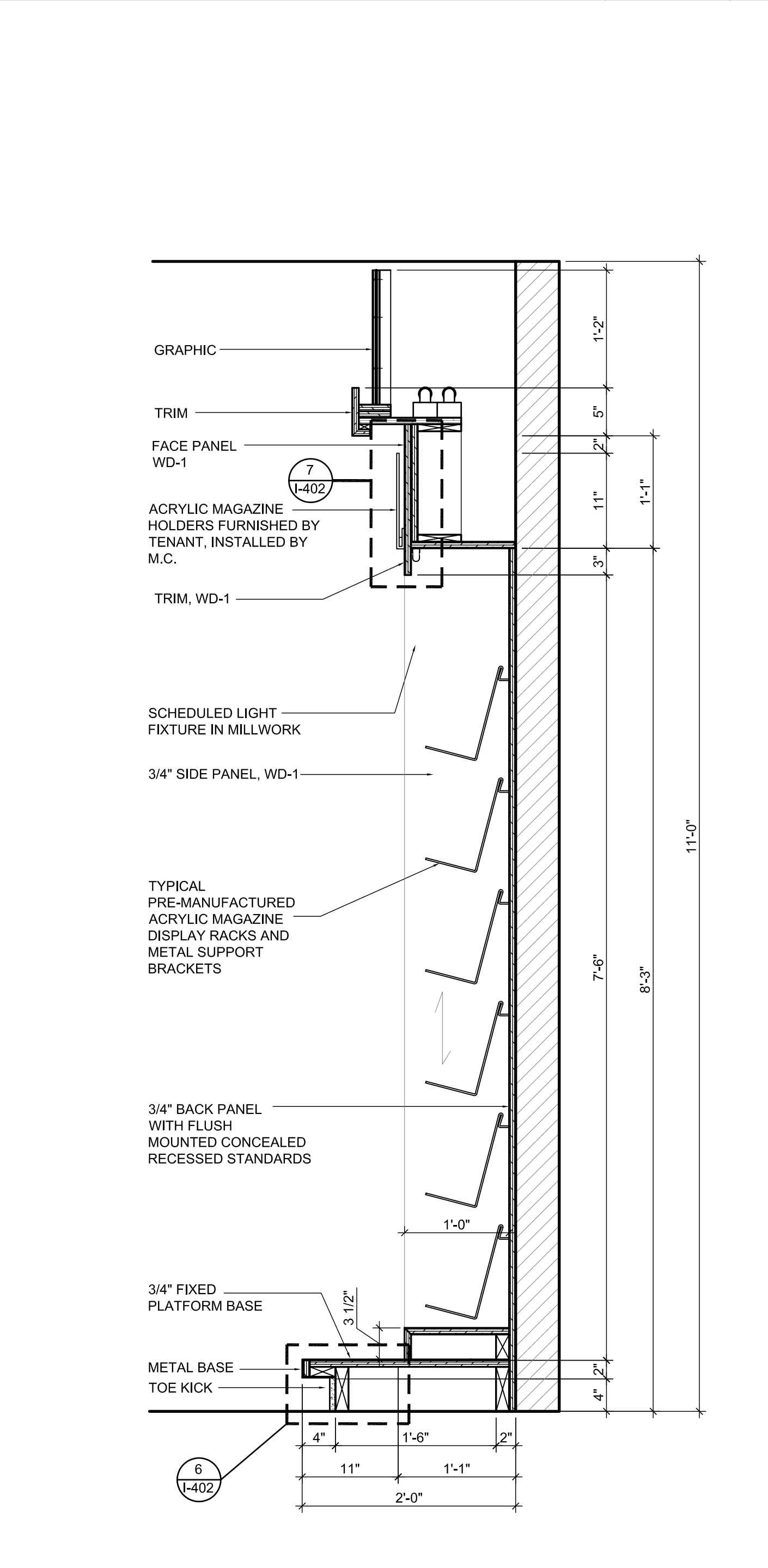
TYPICAL BASE DETAIL 3" = 1'-0" 6



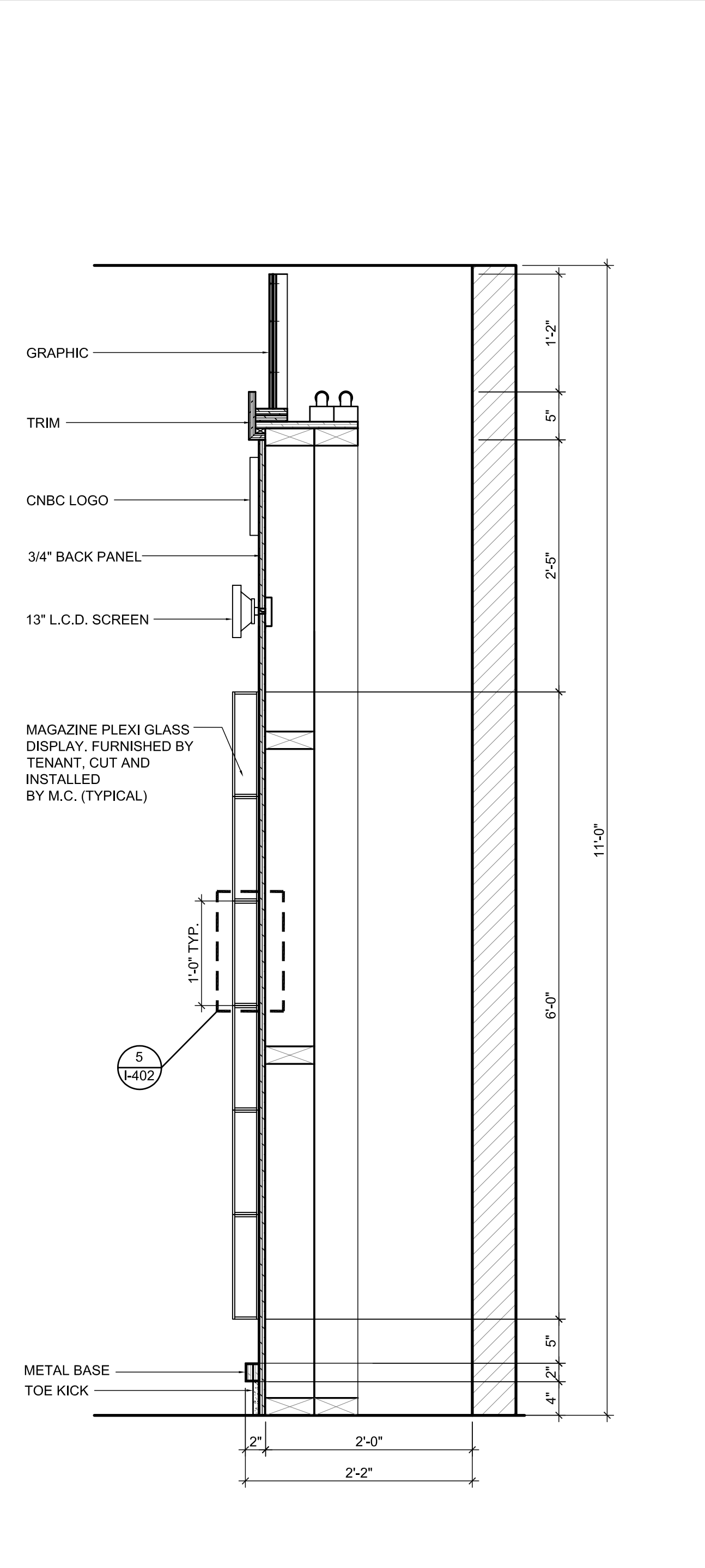
DETAIL/MAGAZINE DISPLAY ON PILASTER 1-1/2" = 1'-0" 5



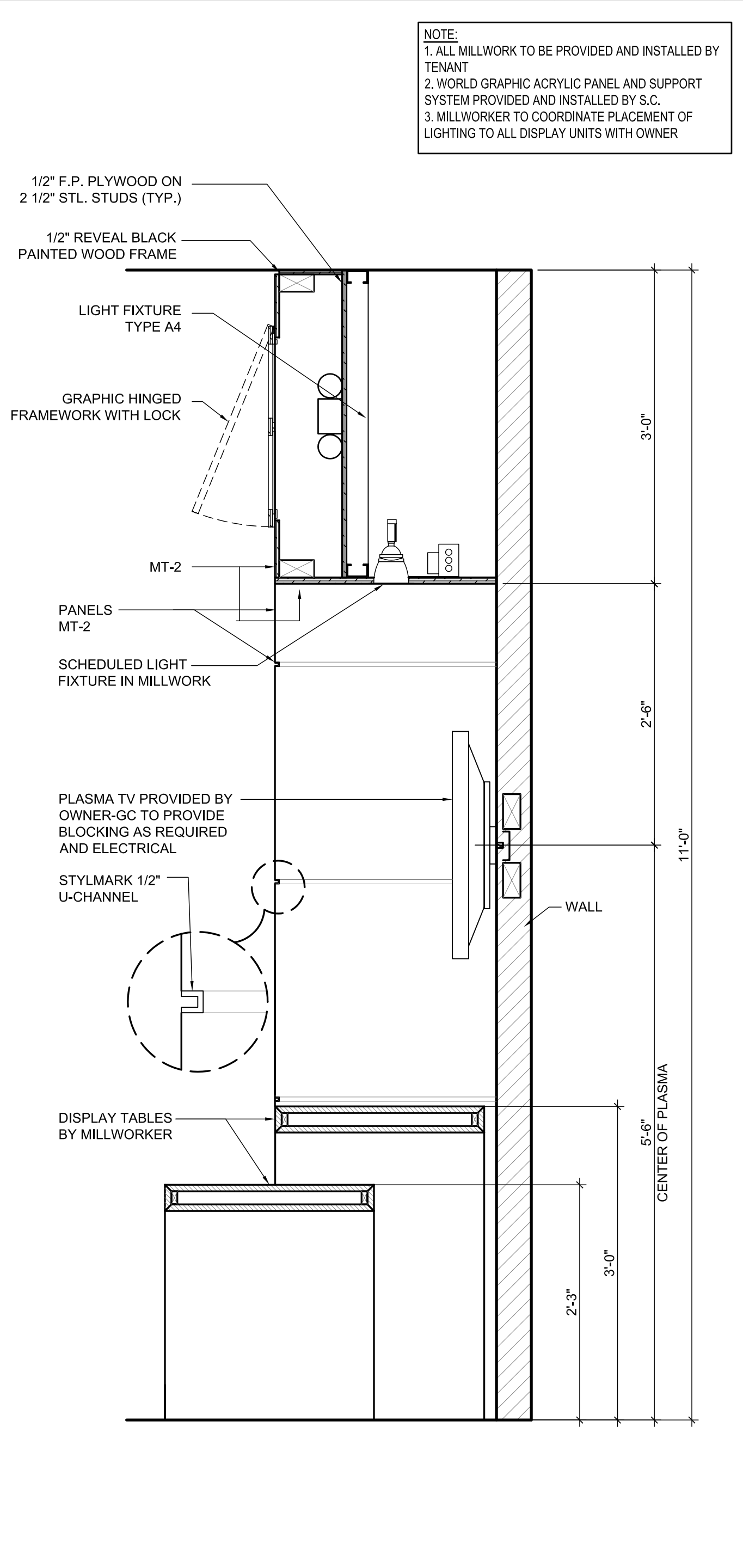
SECTION THRU BACKWRAP 1" = 1'-0" 4



SECTION THRU MAGAZINES 1" = 1'-0" 3



SECTION THRU MAGAZINE COVERS 1" = 1'-0" 2



SECTION THRU BOOKS FEATURE 1" = 1'-0" 1



711 N. FIELDER RD.
ARLINGTON, TX 76012
PH: (817) 635-5696
FAX: (817) 635-5699

DRAWING ISSUE	DATE
75% SUBMITTAL	01.28.10
95% AIRPORT REVIEW	02.12.10
SUBMIT FOR PERMIT	02.26.10

CNBC NEWS
Portland International Jetport
1001 Westbrook Street
Portland, Maine



THE PARADISE SHOPS

SEAL:
REVIEWED & APPROVED BY: _____
PROJECT MANAGER INITIALS: T.L.
DATE: _____

NOTE:
THIS DOCUMENT CONTAINS COPYRIGHTED MATERIAL BELONGING EXCLUSIVELY TO PARADISE DESIGN TEAM ARCHITECTURE, LLC. UNAUTHORIZED REPRODUCTION, DISSEMINATION, OR DUPLICATION OF ANY OF THE INFORMATION CONTAINED HEREIN MAY RESULT IN LIABILITY APPLICABLE BY LAW. IT IS THE RESPONSIBILITY OF THE RELEVANT PARTY TO ENSURE THAT ALL DOCUMENTS ARE APPROVED BY AND FORWARDED BY THE RELEVANT PARTY. WE DO NOT ASSUME ANY RESPONSIBILITY OR LIABILITY FROM ANY PERSON, OR COMPANY, THAT REPRODUCES OR COMPUTES FILES WITHOUT OBTAINING A RELEASE.

PROJECT NUMBER:
2777

DRAWING NAME:
Millwork Sections

DRAWING NUMBER:
I-402