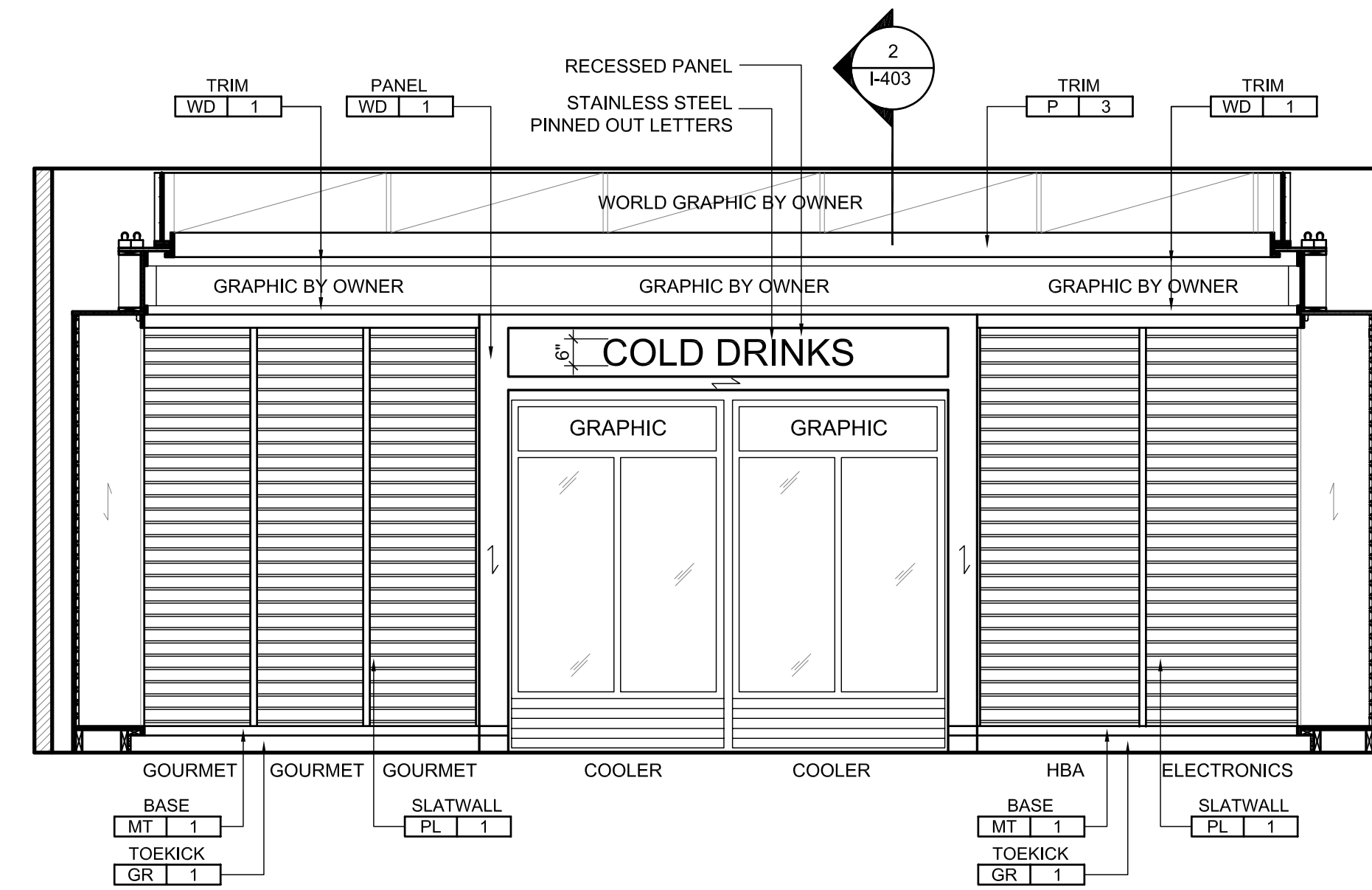
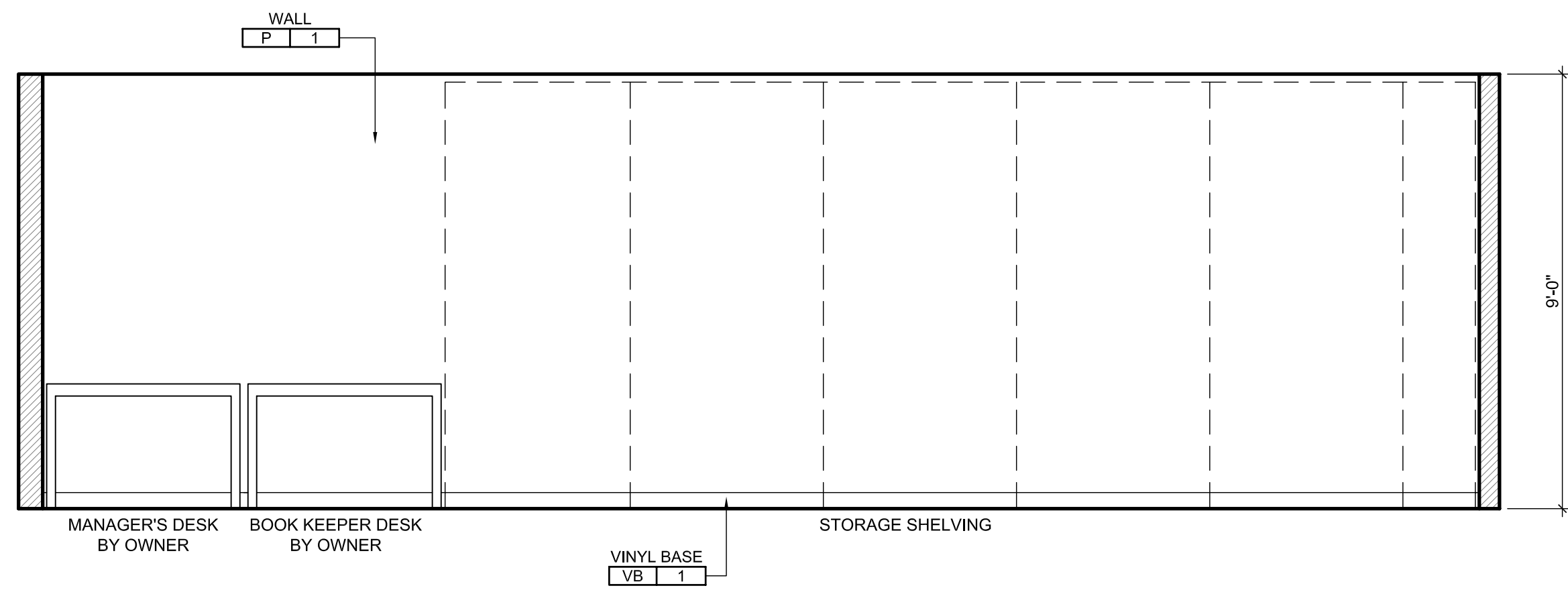


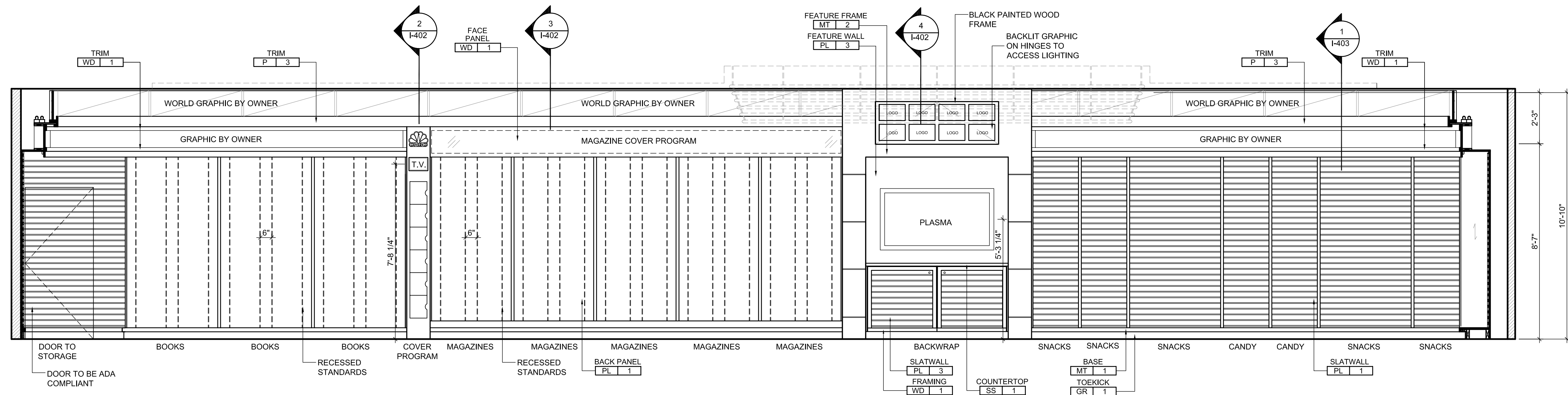
INTERIOR ELEVATION 3/8" = 1'-0" 5

INTERIOR ELEVATION 3/8" = 1'-0" 4



INTERIOR ELEVATION 3/8" = 1'-0" 3

INTERIOR ELEVATION 3/8" = 1'-0" 2



INTERIOR ELEVATION 3/8" = 1'-0" 1



711 N. FIELDER RD.
ARLINGTON, TX 76012
PH: (817) 635-5696
FAX: (817) 635-5699

DRAWING ISSUE	DATE
75% SUBMITTAL	01.28.10
95% AIRPORT REVIEW	02.12.10
SUBMIT FOR PERMIT	02.26.10

CNBC NEWS
Portland International Jetport
1001 Westbrook Street
Portland, Maine



SEAL:
REVIEWED & APPROVED BY: _____
PROJECT MANAGER INITIALS: T.L.
DATE: _____

NOTE: THIS DOCUMENT CONTAINS CONFIDENTIAL MATERIAL BELONGING EXCLUSIVELY TO PARADISE SHOP TEAM ARCHITECTURE, LLC. UNAUTHORIZED REPRODUCTION, DISSEMINATION, OR DUPLICATION OF ANY OF THE INFORMATION CONTAINED HEREIN MAY RESULT IN LIABILITY APPLICABLE BY LAW. IT IS THE RESPONSIBILITY OF THE RELEVANT PARTY TO ENSURE THAT ALL DOCUMENTS ARE APPROVED BY AND FORWARDED TO THE RELEVANT PARTY. WE DO NOT ASSUME ANY RESPONSIBILITY OR LIABILITY FROM ANY PERSON, OR COMPANY, THAT REPRODUCES OR COMMERCIALIZES WITHOUT OUR WRITTEN CONSENT.

PROJECT NUMBER:
2777

DRAWING NAME:
Interior Elevations

DRAWING NUMBER:
I-202