

711 N. FIELDER RD.
ARLINGTON, TX 76012
PH: (817) 635-5696
FAX: (817) 635-5699

DRAWING ISSUE	DATE
75% SUBMITTAL	01.28.10
95% AIRPORT REVIEW	02.12.10
SUBMIT FOR PERMIT	02.26.10

CNBC NEWS
Portland International Jetport
1001 Westbrook Street
Portland, Maine



THE PARADIES SHOPS

SEAL:

REVIEWED & APPROVED BY: _____
PROJECT MANAGER INITIALS: T.L.
DATE: _____

NOTE:
THIS DOCUMENT CONTAINS COPYRIGHTED MATERIAL BELONGING EXCLUSIVELY TO PARADISE DESIGN TEAM ARCHITECTURE, LLC. UNAUTHORIZED REPRODUCTION, DISSEMINATION, OR DUPLICATION OF ANY OF THE INFORMATION CONTAINED HEREIN MAY RESULT IN LIABILITY APPLICABLE BY LAW. IT IS THE RESPONSIBILITY OF THE USER TO OBTAIN THE NECESSARY PERMISSION TO ACT ON HIS BEHALF. TO ENSURE THAT ALL DOCUMENTS ARE APPROVED BY AND FORWARDED BY THE RELEVANT AGENCY. WE DO NOT ISSUE ANY RESPONSIBILITY OR LIABILITY FROM ANY PERSON, OR COMPANY, THAT REPRODUCES OR QUOTES FILES WITHOUT SHOWING A REFERENCE.

PROJECT NUMBER:

2777

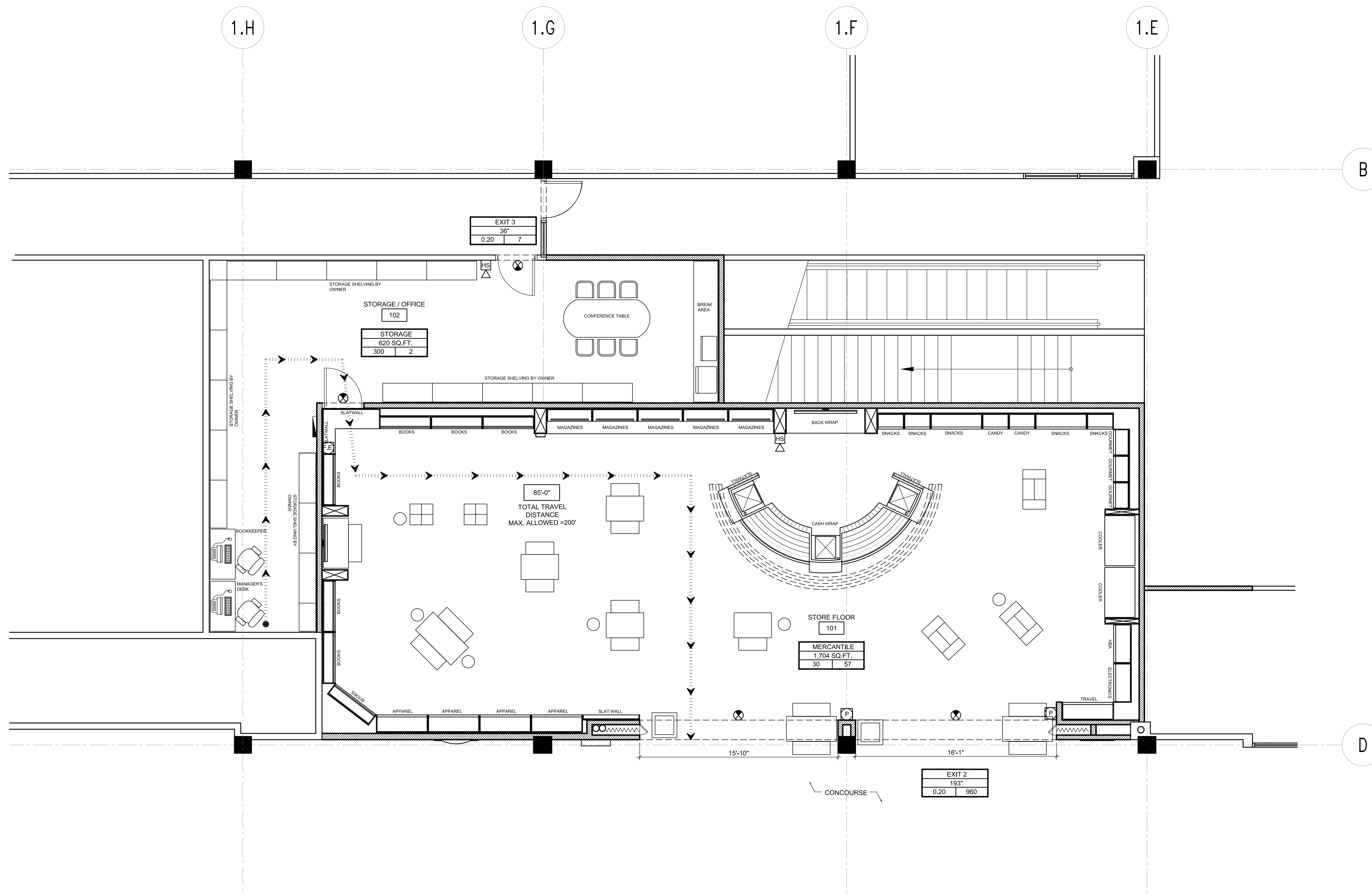
DRAWING NAME:

Life Safety Plan

DRAWING NUMBER:

A-111

LEGEND



LIFE SAFETY PLAN 1/4" = 1'-0" 1

111	EXIT CAPACITY	ROOM TAG	OCCUPANCY TYPE
→	DISTANCE OF TRAVEL	ROOM	FLOOR AREA
→	COMMON PATH	N XX	OCCUPANCY LOAD
→	WALL MOUNTED EXIT SIGN	INCHES	OCCUPANCY LOAD FACTOR (NET)
→	EXIT SIGN (LIGHT FIXTURE) CEILING MOUNTED DOUBLE SIDED SIGN	EXIT TAG	EXIT NAME
→	WALL MOUNTED EMERGENCY LAMPS W/ BATTERY PACK	EXIT	WIDTH
→	FIRE EXTINGUISHER (SURFACE MOUNTED)	N XX	EXIT CAPACITY
→	PULL STATION	INCHES	EXIT CAPACITY FACTOR
→	HORN / STROBE	N XX	

GENERAL NOTES: EXTINGUISHER SELECTION PER 2009 EDITION NFPA 10
1. LARSEN'S FIRE EXTINGUISHER MODEL NUMBER: 0-3216
 TRAVEL DISTANCE TO BE 75' MAX. INSIDE BOX DIM.
2. CABINET TO BE OCCULT SERIES 32"x16"x8" MOUNTED @ 30"A.F.F SURFACE MOUNTED
 SOLID DOOR
 ALUMINUM DOOR
 VERTICAL BLACK LETTERING
3. ALL INTERIOR FINISHES IN A FULLY SPRINKLERED BUILDING SHALL HAVE A FLAME SPREAD CLASSIFICATION PER TABLE 803.5 & 2003 NFPA101, 36.3.3.2 & SPRINKLER REDUCTION NFPA101, 10.2.8.1AS FOLLOWS:
A. IN MERCANTILE OCCUPANCIES, VERTICAL EXITS AND EXIT PASSAGEWAYS SHALL HAVE CLASS B AND ALL OTHER SPACES AND ENCLOSED ROOMS SHALL HAVE CLASS C FINISHES. WALL AND CEILING INTERIOR FINISHES TO BE B OR C.
B. LOCKS ON EXIT DOORS SHALL NOT REQUIRE THE USE OF KEY, TOOL, OR SPECIAL KNOWLEDGE FROM THE INTERIOR OF THE BUILDING.