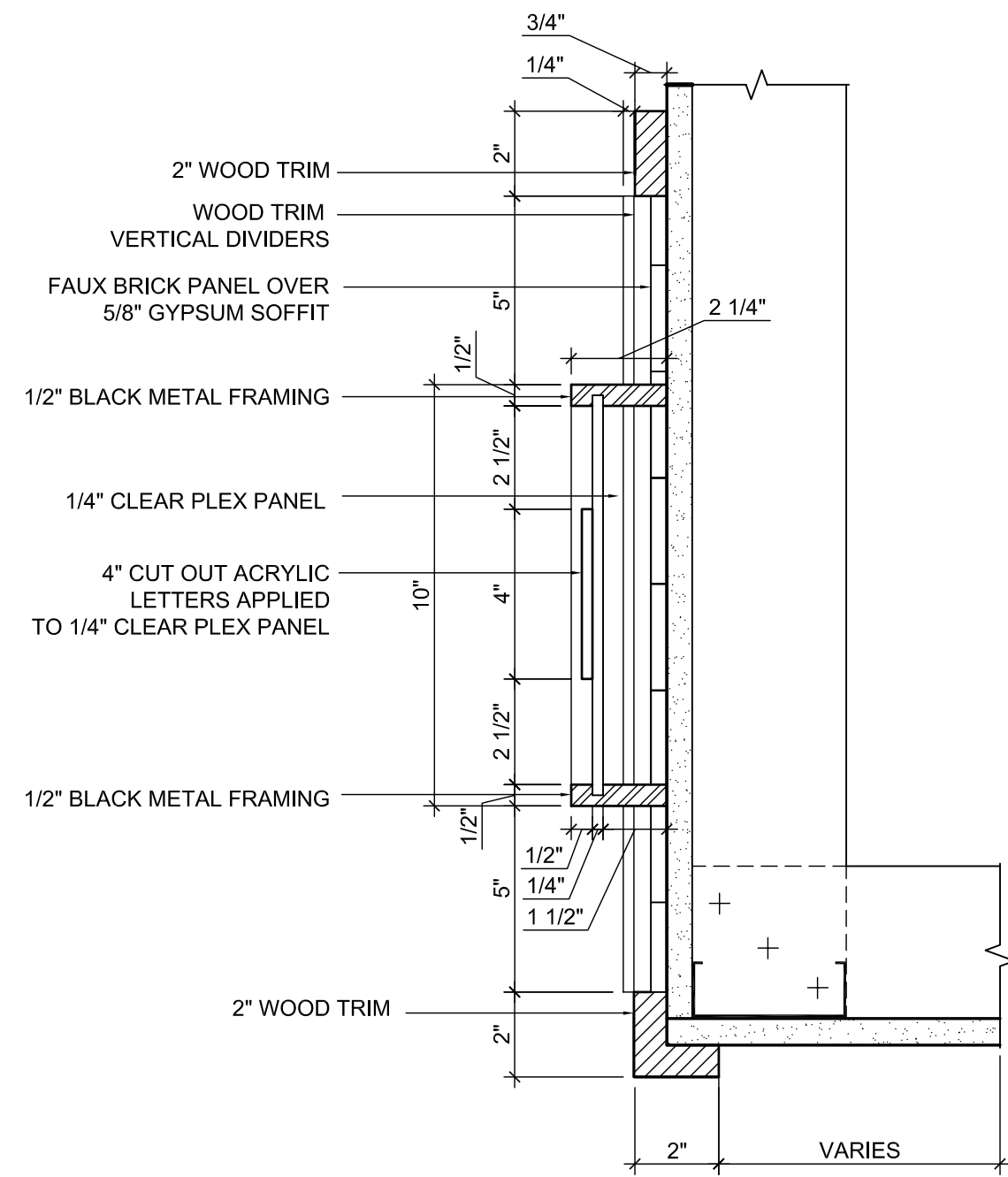
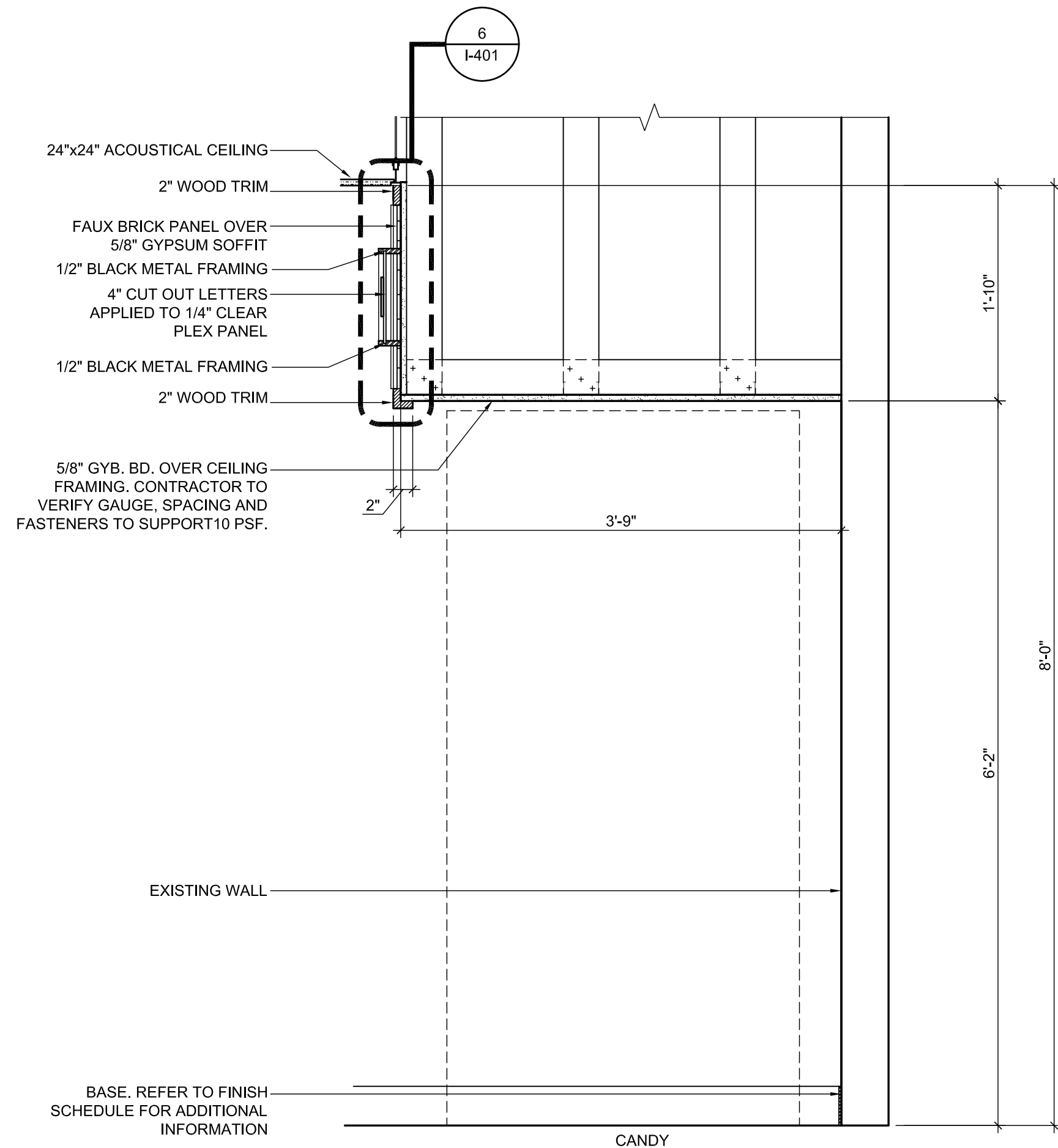


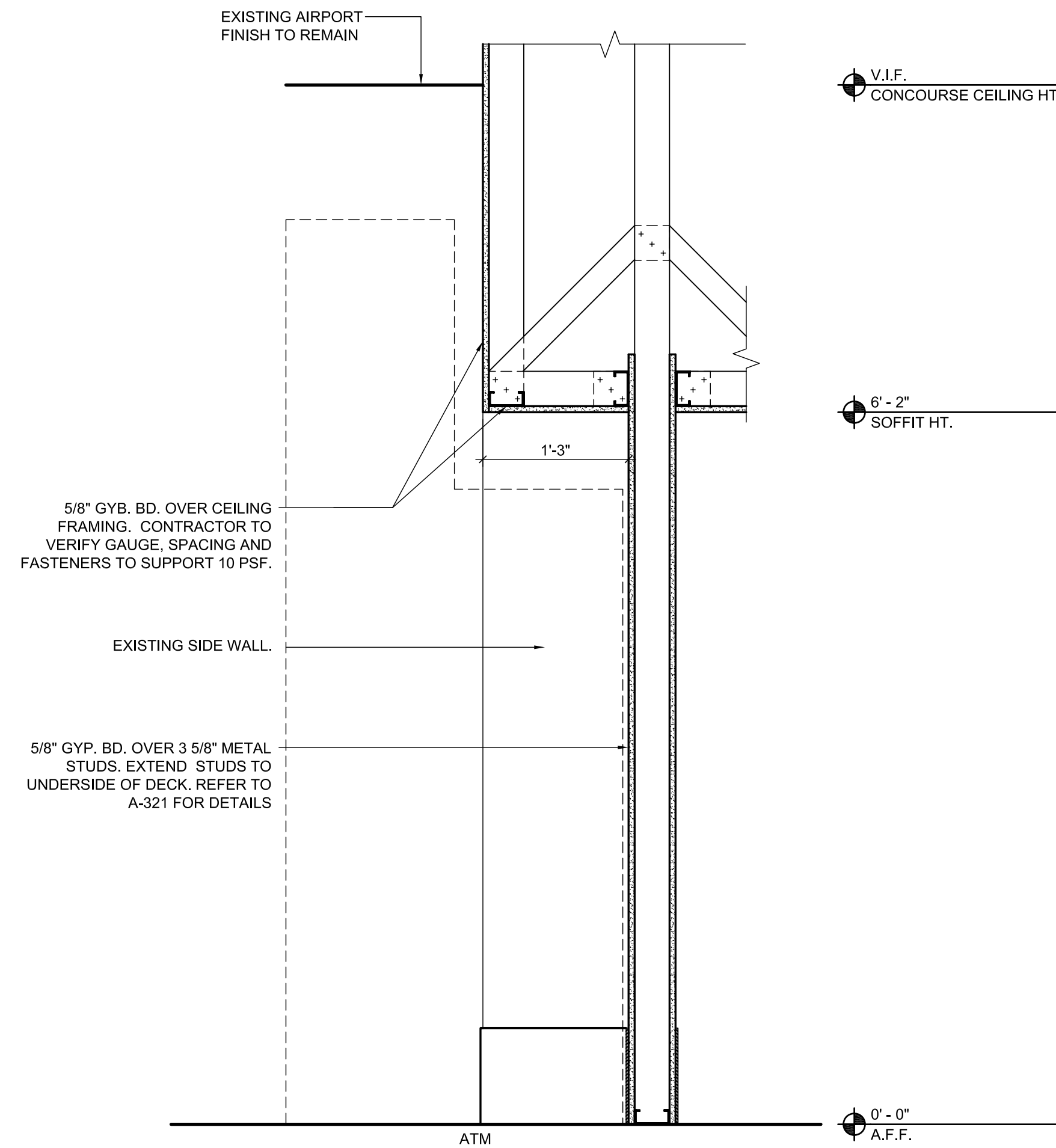
COLUMN SECTION 1" = 1'-0" 7



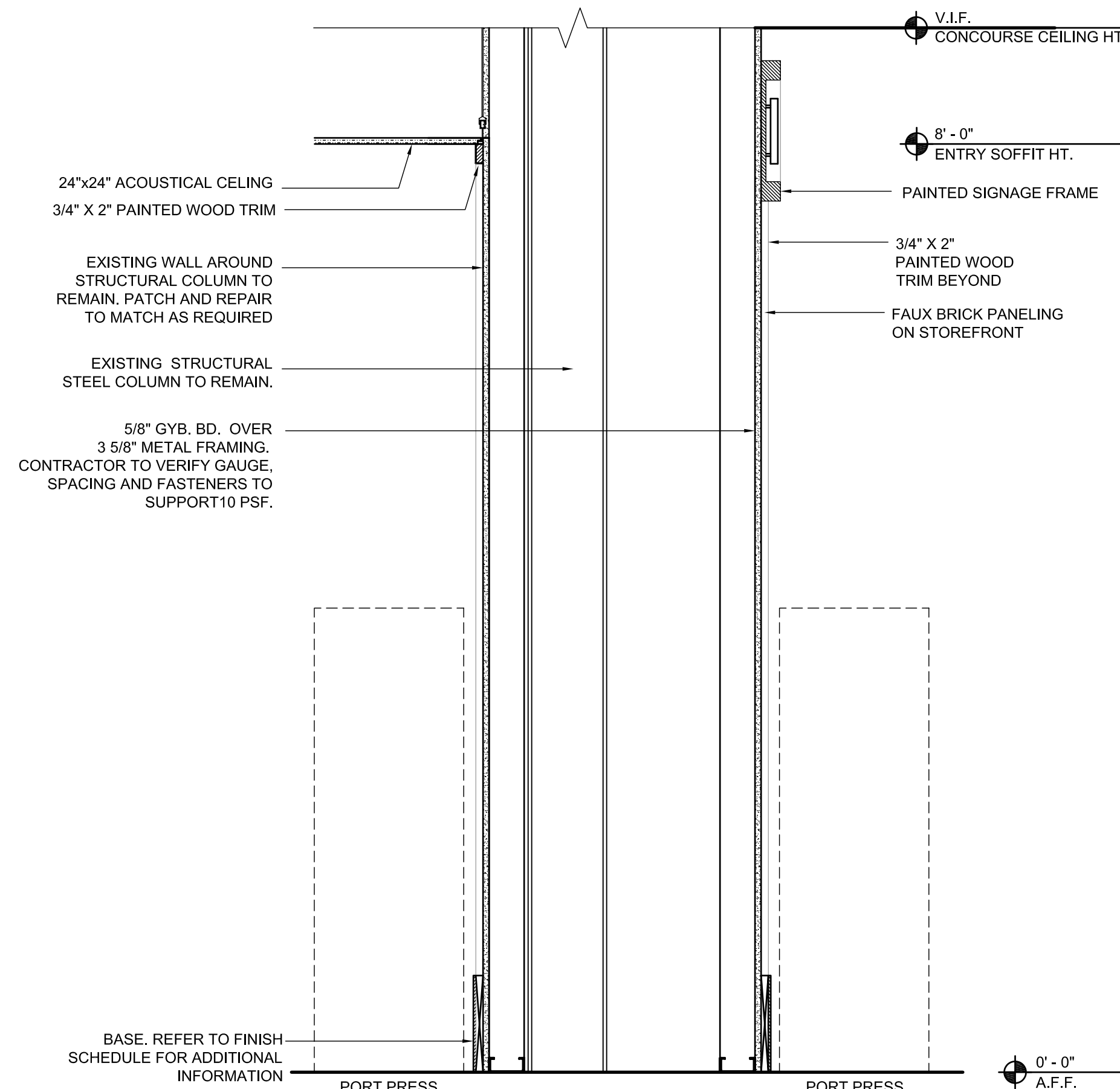
TYPICAL SOFFIT SECTION 3" = 1'-0" 6



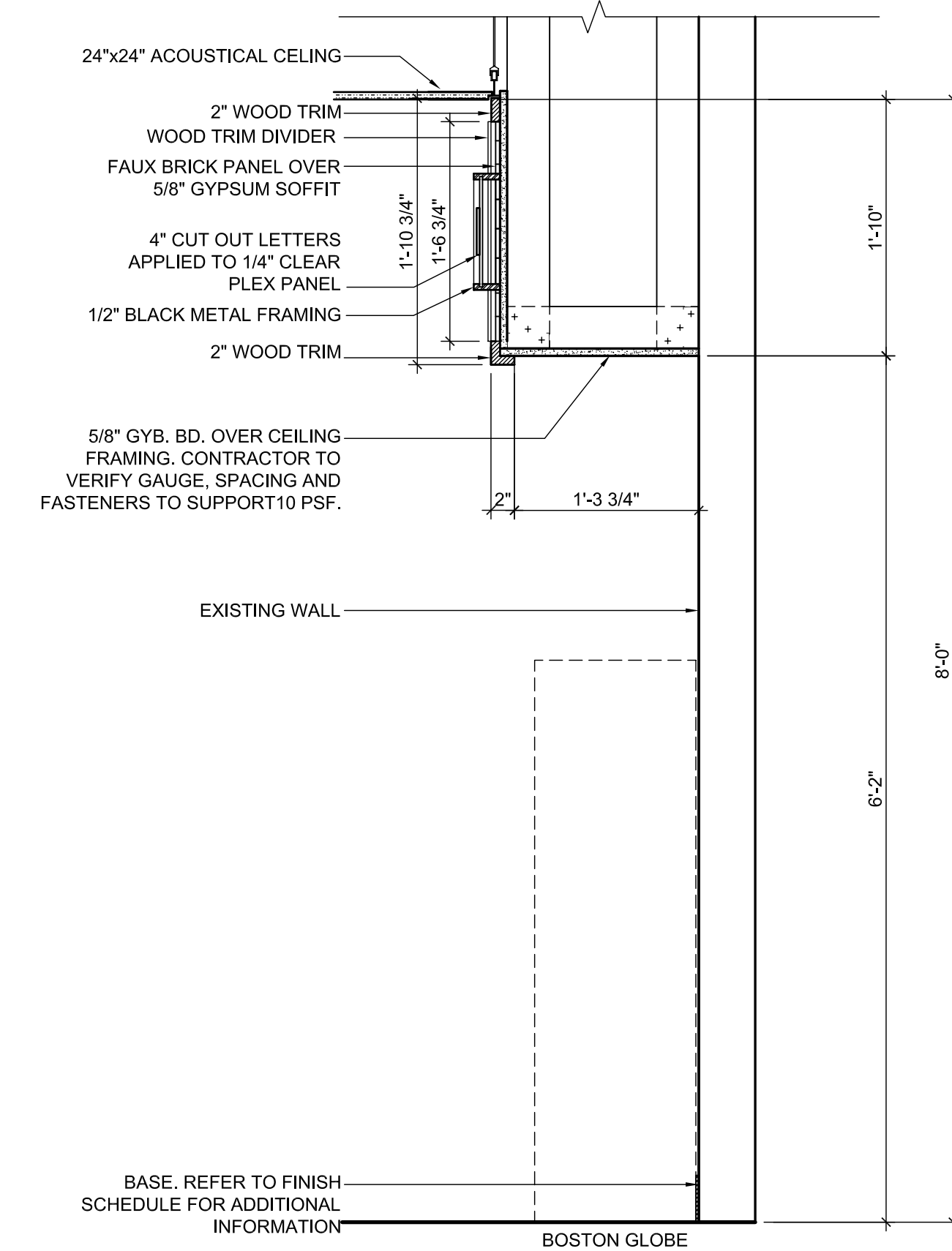
SECTION THRU VENDING 1" = 1'-0" 3



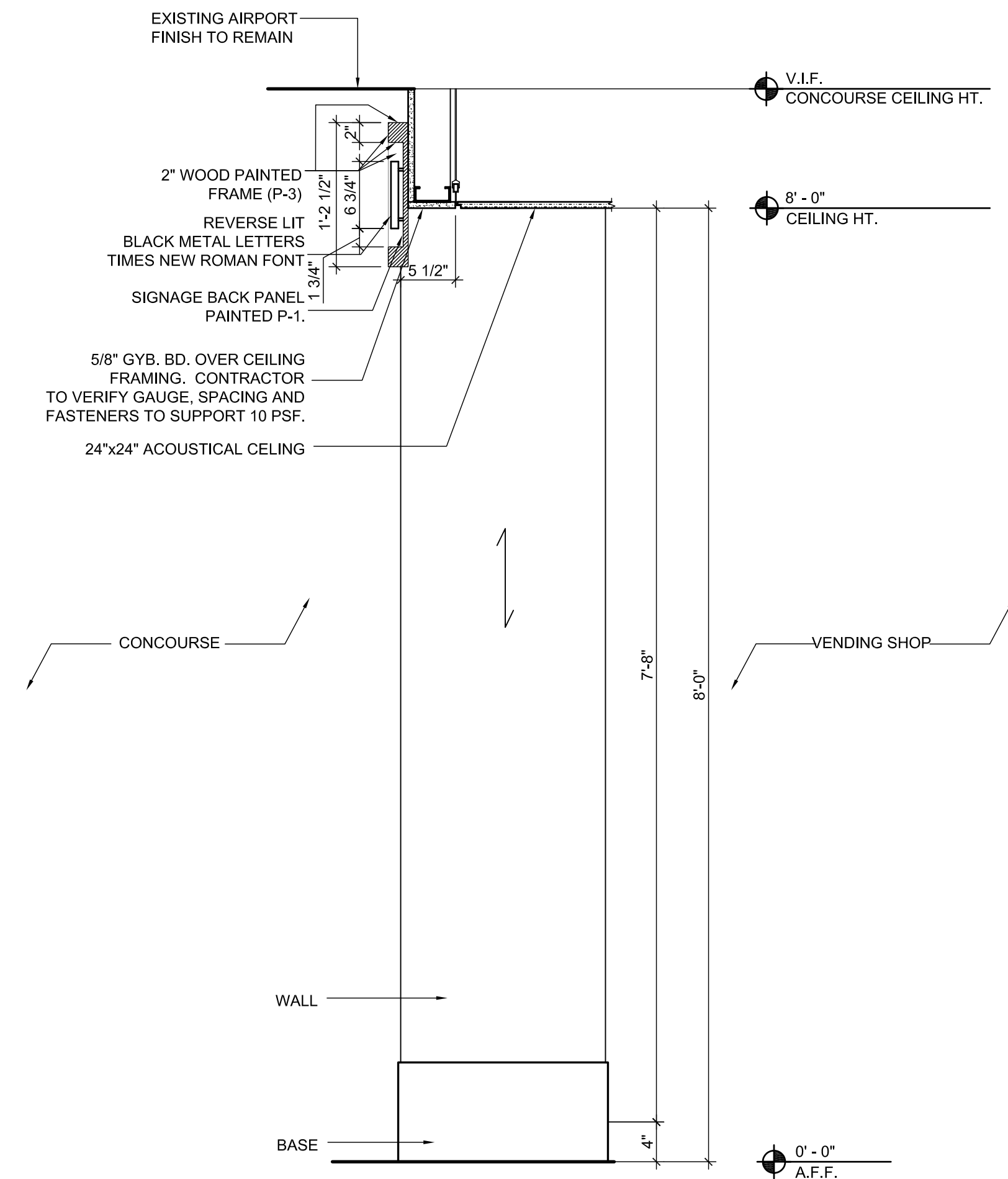
SECTION THRU ATM 1" = 1'-0" 5



SECTION THRU ENTRY COLUMN 1" = 1'-0" 2



SECTION THRU NEWSPAPERS 1" = 1'-0" 4



SECTION THRU ENTRY 1" = 1'-0" 1



711 N. FIELDER RD.
ARLINGTON, TX 76012
PH: (817) 635-5696
FAX: (817) 635-5699

DRAWING ISSUE	DATE
75% SUBMITTAL	02.12.10
95% PERMIT SUBMITTAL - LL REVIEW	02.24.10

**PRE-SECURITY
VENDING SHOP**
Portland International Jetport
1001 Westbrook Street
Portland, Maine



THE PARADIES SHOPS

SEAL:

REVIEWED & APPROVED BY: _____
PROJECT MANAGER INITIALS: T.L.
DATE: _____

NOTE:
THIS DOCUMENT CONTAINS CONFIDENTIAL MATERIAL BELONGING EXCLUSIVELY TO PARADISE DESIGN TEAM ARCHITECTURE, LLC. UNAUTHORIZED REPRODUCTION, DISSEMINATION, OR DUPLICATION OF ANY OF THE INFORMATION CONTAINED HEREIN MAY RESULT IN LIABILITY PURSUABLE BY LAW. IT IS THE RESPONSIBILITY OF THE USER TO VERIFY THE ACCURACY OF ALL INFORMATION ACT ON HIS BEHALF. TO ENSURE THAT ALL DOCUMENTS ARE APPROVED BY AND FORWARDED BY THE ISSUING DEPARTMENT. WE DO NOT ASSUME ANY RESPONSIBILITY OR LIABILITY FROM ANY PERSON, OR COMPANY, THAT REPRODUCES OR OTHERWISE FILES WITHOUT OBTAINING A RELEASE.

PROJECT NUMBER:

2780

DRAWING NAME:

**Millwork &
Ceiling
Sections**

DRAWING NUMBER:

I-401