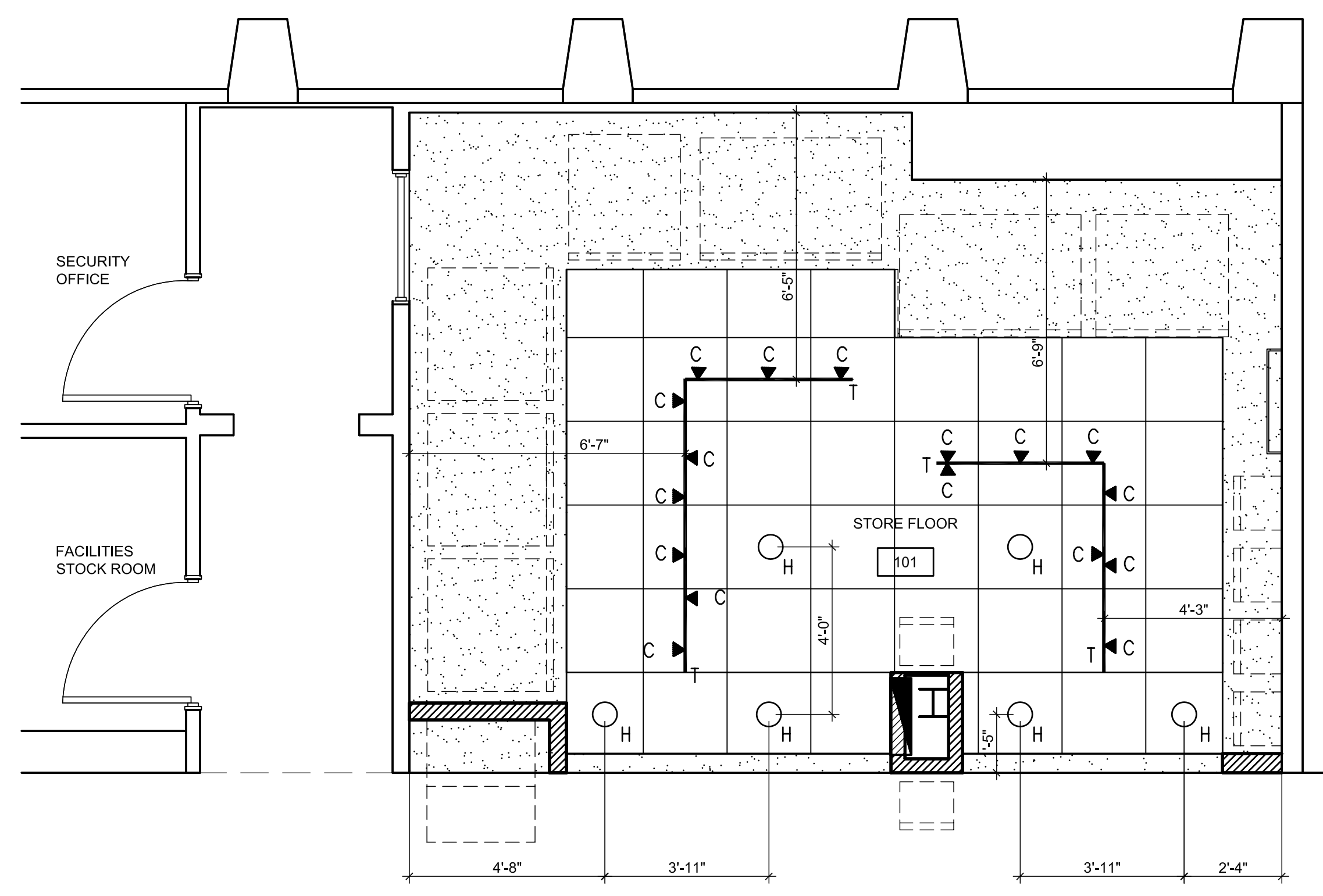




711 N. FIELDER RD.
ARLINGTON, TX 76012
PH: (817) 635-5696
FAX: (817) 635-5699

DRAWING ISSUE	DATE
75% SUBMITTAL	02.12.10
95% PERMIT SUBMITTAL - LL REVIEW	02.24.10



2780 -- PRE-SECURITY VENDING SHOP ELECTRICAL LIGHTING FIXTURE SCHEDULE					
TYPE	SYMBOL	WATTS	MANUFACTURE	CATALOG NO. & DESCRIPTION	LAMPS
C	▲	Approx 23W	Juno Lighting	T253LED-3K-NFL-WH AVANT GARDE CYLINDRA LED Mounting: On Track "T"	
H	○	32W	Juno Lighting	C8H-226/42T (Downlight) Electronic Ballast to be 120V/60Hz 8" CFL Open Downlight Mounting: Where indicated	Osram Sylvania SCF42DT/E/IN/8 30
T	—	N/A	Juno Lighting	T4BL Electronic Ballast to be 120V/60Hz Trac-Master Two Circuit Track 4' Lengths Mounting: On Suspended Ceiling Element	N/A
* SEE LIGHTING SPECIFICATION PACKAGE FOR COMPLETE INFORMATION *					
GENERAL LIGHTING NOTES					
1. REFER TO ELECTRICAL DRAWINGS & REFLECTED CEILING PLAN FOR FURTHER INFORMATION INCLUDING LOCATIONS FOR EMERGENCY LIGHTING AND EXIT SIGNAGE.		5. LIGHTING FIXTURES AND CUT SHEETS SHALL BE CONSIDERED PART OF THE PLANS FOR BIDDING AND CONSTRUCTION PURPOSES.			
2. THE ELECTRICAL CONTRACTOR SHALL BE RESPONSIBLE FOR INSTALLING ALL FIXTURES AND EMERGENCY LIGHTING TO MEET STATE AND LOCAL CODES.		6. LIGHTING FIXTURE SUPPLIER SHALL FURNISH (4) COPIES OF THE LIGHTING FIXTURE CATALOG CUTS AND RECEIVE APPROVAL BY ELECTRICAL ENGINEER AND PAVLIK DESIGN TEAM PRIOR TO SUPPLYING FIXTURES. (3) APPROVED COPIES TO BE SUPPLIED TO CONTRACTOR FOR HIS USE.			
3. ALL LIGHTING FIXTURES AND LAMPS IN THIS SCHEDULE SHALL BE SUPPLIED BY THE ELECTRICAL CONTRACTOR (EXCEPT AS NOTED) AND INSTALLED BY THE ELECTRICAL CONTRACTOR.		7. MANUFACTURER AND CATALOG NUMBER LISTED ESTABLISHES THE MINIMUM LEVEL OF QUALITY ACCEPTABLE. ANY PROPOSED SUBSTITUTION MUST MEET OR EXCEED THIS LEVEL OF QUALITY. AS DETERMINED BY PAVLIK DESIGN TEAM, AND MUST BE SUBMITTED FOR PRIOR APPROVAL. SUBMITTALS MUST BE MADE VIA A BIDDING GENERAL CONTRACTOR WITH COMPLETE SPECIFICATION INFORMATION.			
4. ALL OTHER ELECTRICAL MATERIALS INCLUDING SWITCHES, CONTACTORS, AND RECEPTACLES, ETC. SHALL BE SUPPLIED & INSTALLED BY THE ELECTRICAL CONTRACTOR.		8. ALL LIGHTING FIXTURES NOT DIMENSIONED ARE TO BE LOCATED IN THE CENTER OF CEILING TILE OR CEILING GRID AS SHOWN.			

**PRE-SECURITY
VENDING SHOP**
Portland International Jetport
1001 Westbrook Street
Portland, Maine



THE PARADIES SHOPS

SEAL:

REVIEWED & APPROVED BY: _____

PROJECT MANAGER INITIALS: T.L.

DATE: _____

NOTE:
THIS DOCUMENT CONTAINS COPYRIGHTED MATERIAL BELONGING EXCLUSIVELY TO PAVLIK DESIGN TEAM-ARCHITECTURE, LLC. UNAUTHORIZED REPRODUCTION, DISSEMINATION, OR DUPLICATION OF ANY OF THE INFORMATION CONTAINED HEREIN MAY RESULT IN LEGAL ACTION. THE USER SHALL BE RESPONSIBLE FOR THE PROTECTION AND SECURITY OF THIS DOCUMENT. THE USER SHALL BE RESPONSIBLE FOR ENSURING THAT ALL DOCUMENTS ARE APPROVED BY AND FORWARDED TO THE DESIGN TEAM PRIOR TO ANY REVISIONS. THE USER SHALL BE RESPONSIBLE FOR ENSURING THAT ALL DOCUMENTS ARE APPROVED BY AND FORWARDED TO THE DESIGN TEAM PRIOR TO ANY REVISIONS. THE USER SHALL BE RESPONSIBLE FOR ENSURING THAT ALL DOCUMENTS ARE APPROVED BY AND FORWARDED TO THE DESIGN TEAM PRIOR TO ANY REVISIONS.

PROJECT NUMBER:

2780

DRAWING NAME:

**Lighting
Plan &
Schedule**

DRAWING NUMBER:

A-142