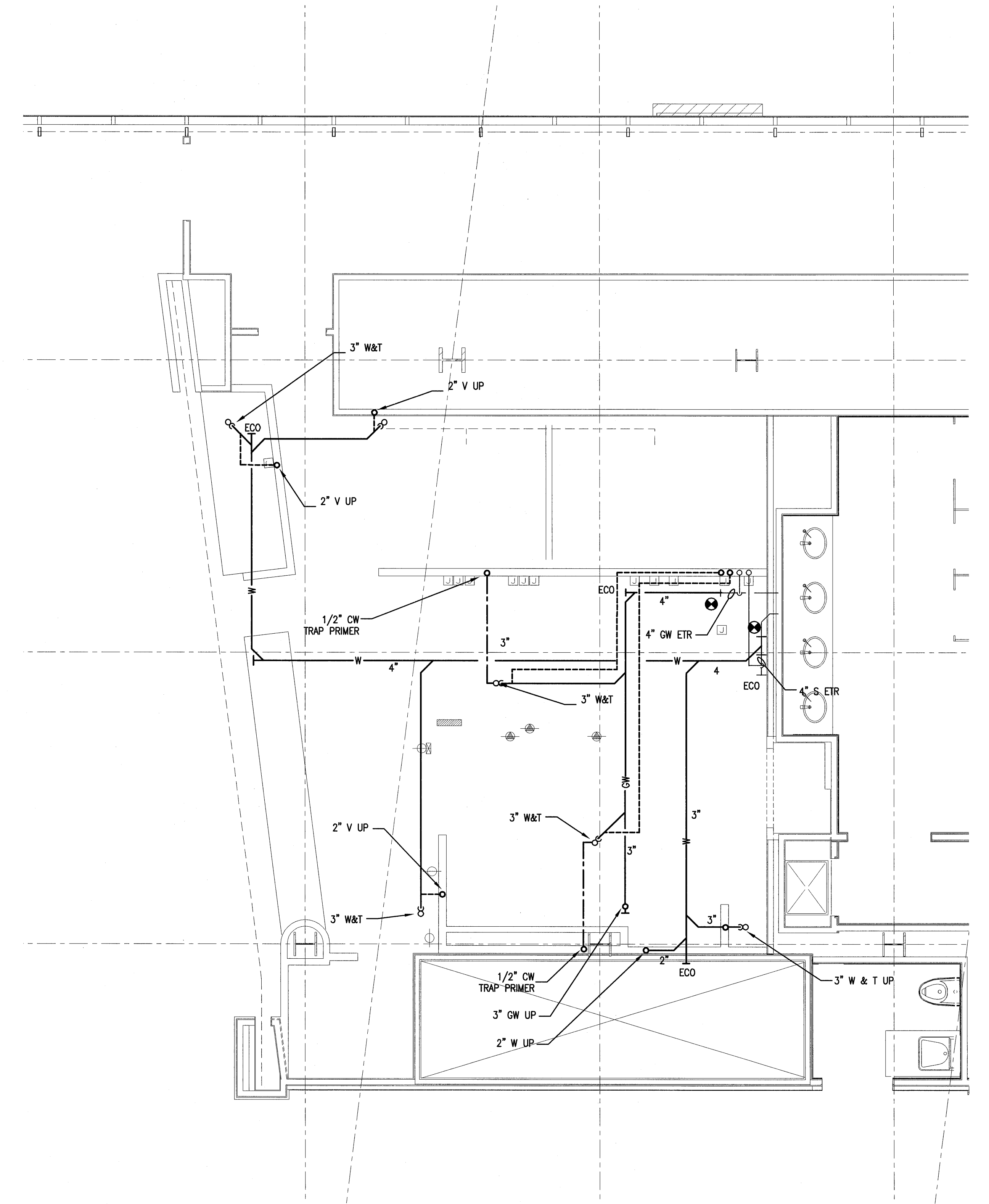
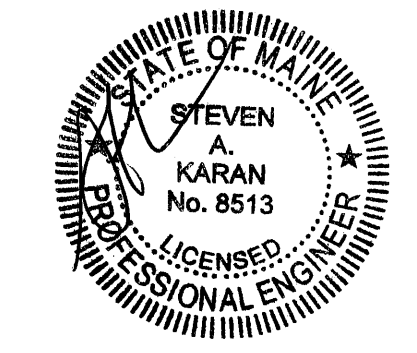


1 FLOOR PLAN
1/4"=1'-0"

DRAWING NOTES:
1. GAS PIPING BASED ON NFPA-54
TABLE 6.2 BASED ON 70 FEET OF
TOTAL EQUIVALENT LENGTH FROM
POINT OF CONNECTION



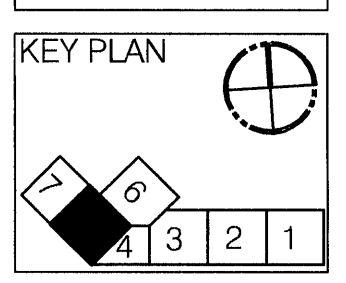
2 UNDER FLOOR PIPING PLAN
1/4"=1'-0"



Item	Date
PERMIT	5-27-11



Burger King
Portland Int'l Jetport PWM
1001 Westbrook Street
Portland ME 04102



HMS Host
6905 Roadside Drive
Bethesda, MD 20817
T: (301) 694-4746
F: (301) 694-4643
C: (301) 274-6417
E: scott.reimink@hmshost.com

Building Engineering
Resources, Inc.
66 Main Street
North Easton, MA 02556
T: (508) 230-0209
F: (508) 230-0265
E: ber@ber-engineering.com

L2M Foodservice
Design Group
811 Crowell Park Drive, Suite 113
Crownell Business Park at BWI
Glen Burnie, Maryland 21061
T: (410) 863-1302
F: (410) 863-1308
E: FSDG@L2MFoodServiceDesign.com

LLOYD ARCHITECTS
Two High Cliff, Plymouth, MA 02360
TEL: (508) 746-4444
FAX: (508) 746-1236
E-MAIL: info@lloydarch.com

Job No.:
Scale: As noted
Issued: 5-27-11

PLUMBING
PIPING PLANS

P-2.01