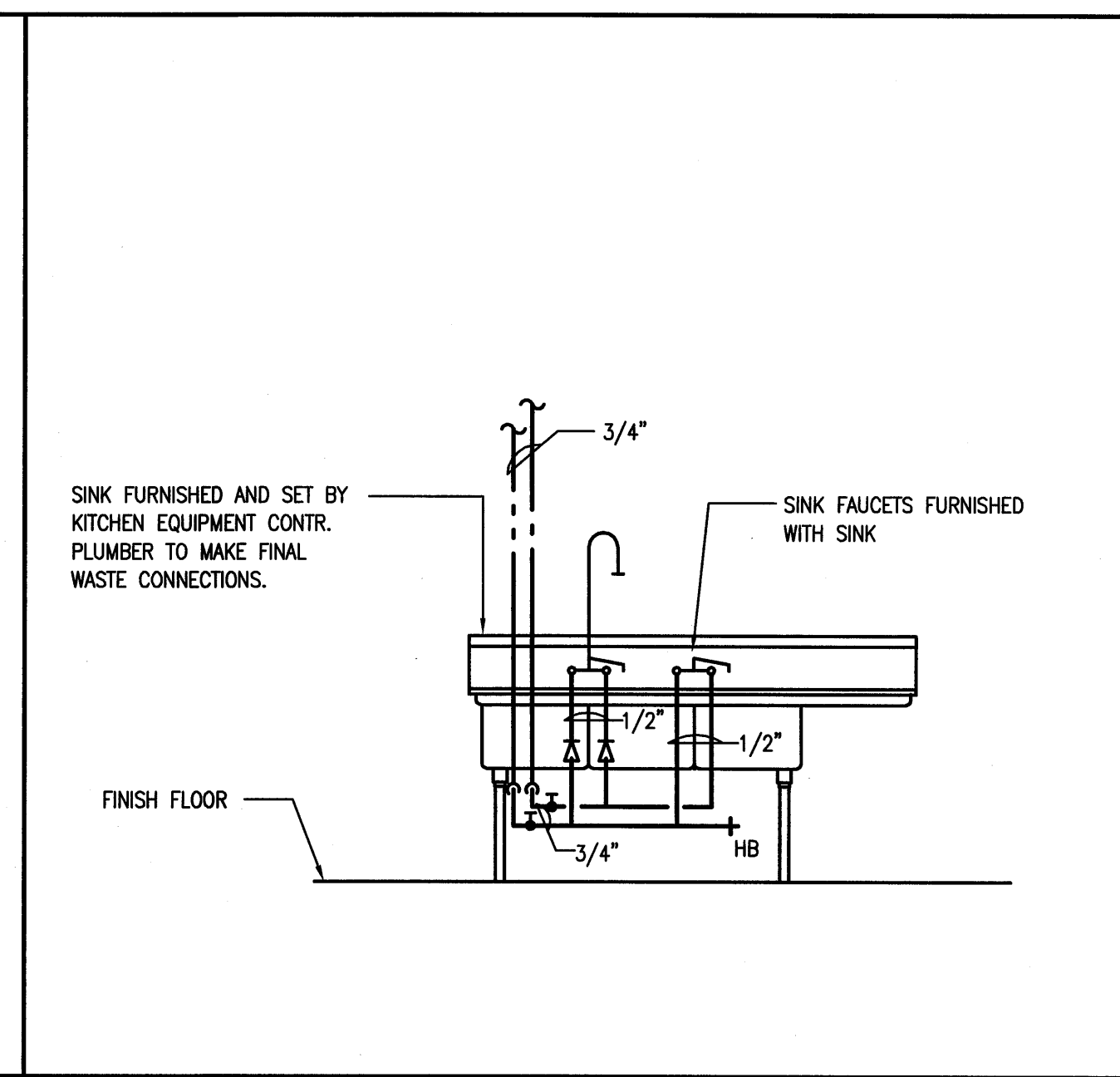
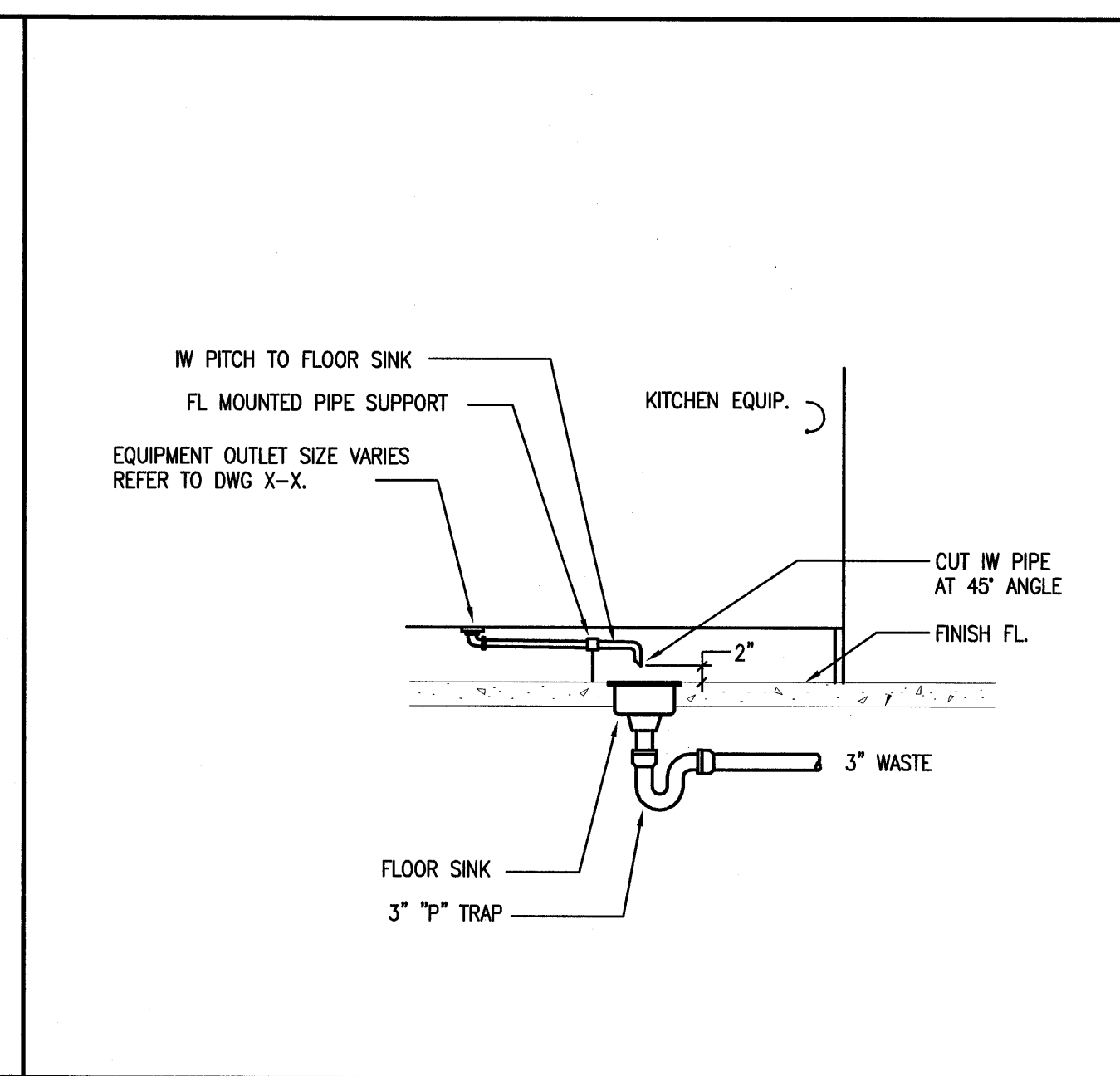


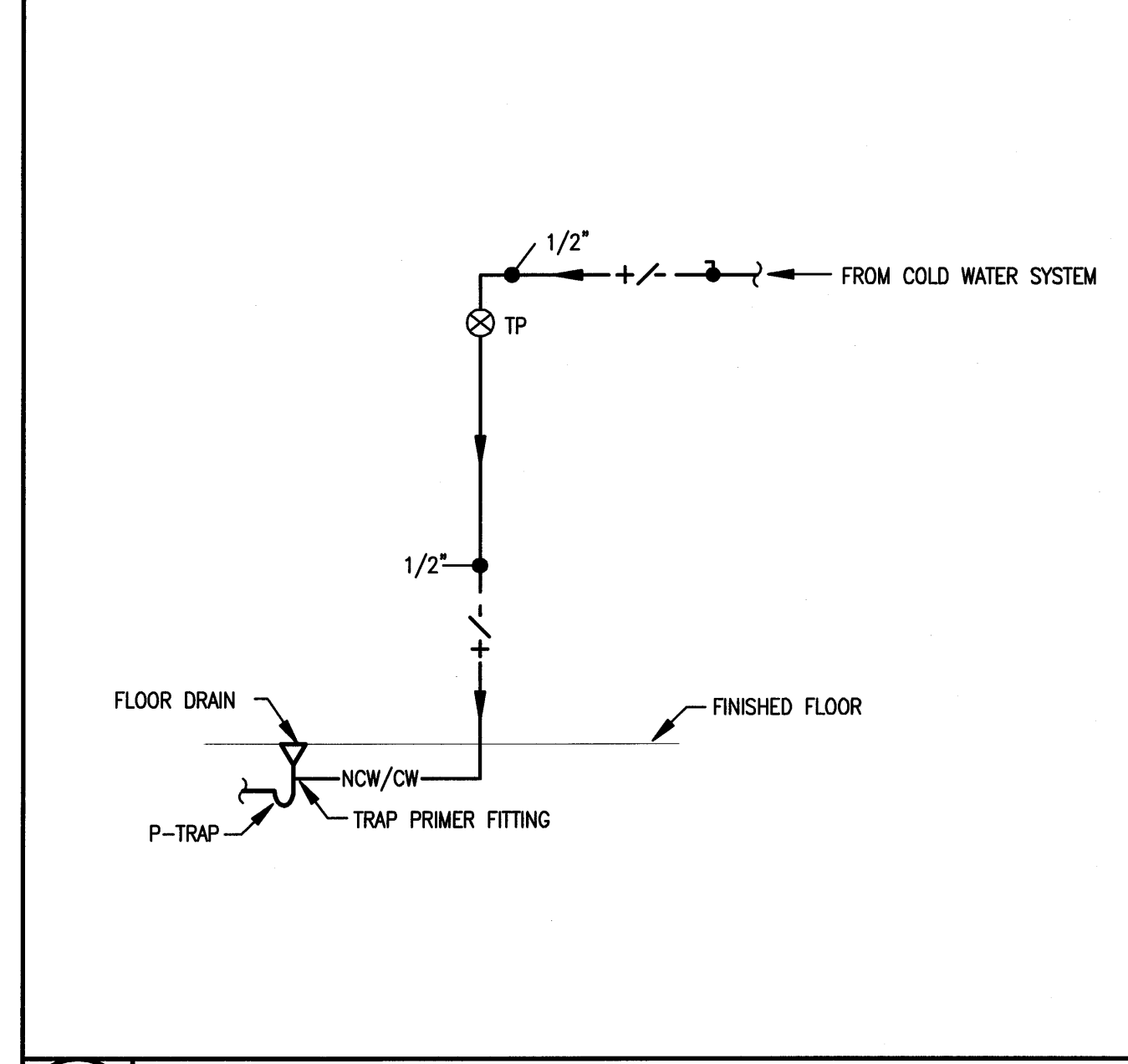
1 3 COMPARTMENT SINK DIAGRAM NTS



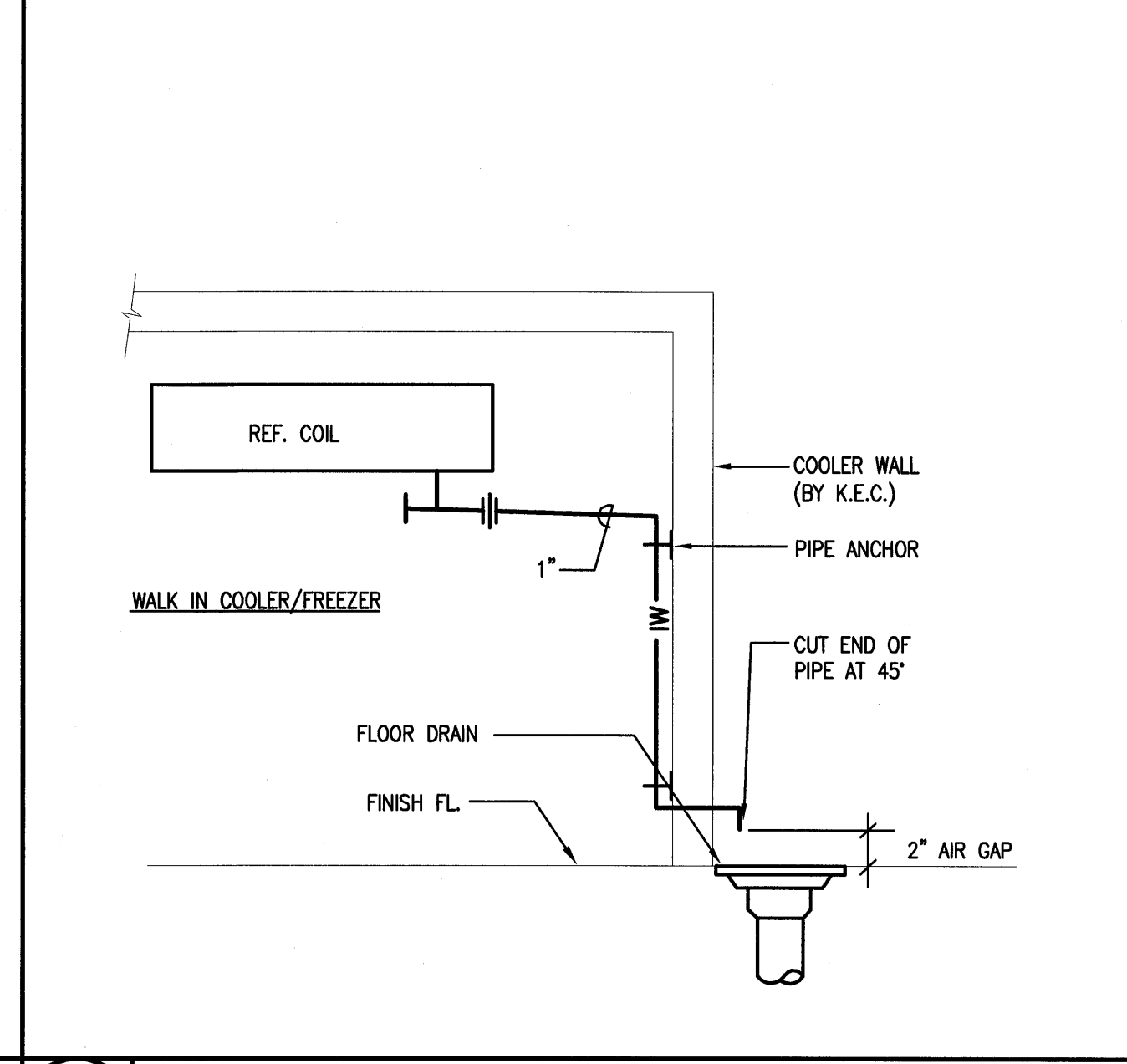
2 3 COMPARTMENT SINK DIAGRAM NTS



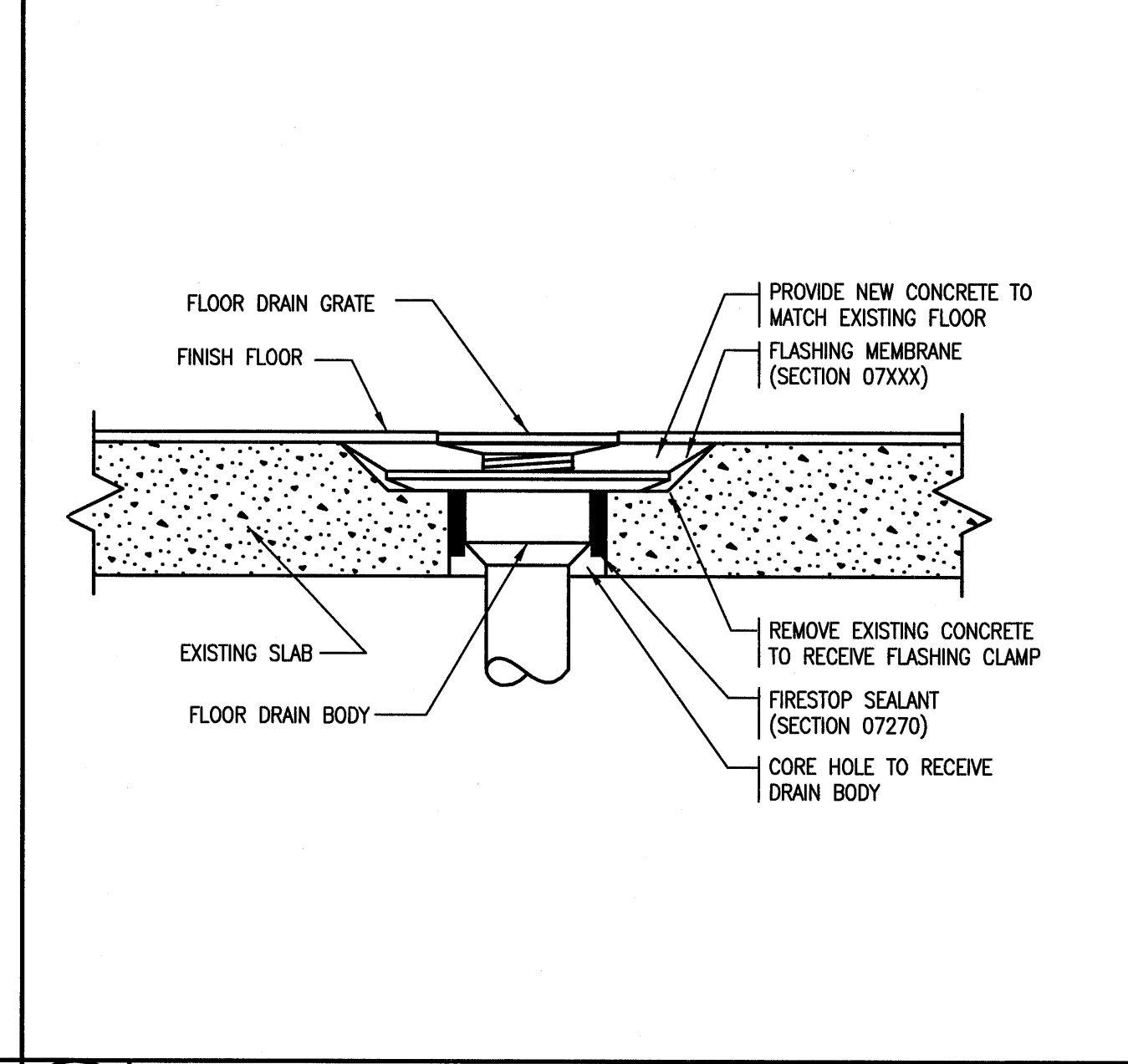
3 KITCHEN EQUIPMENT IW PIPE DIAGRAM NTS



4 TRAP PRIMER PIPING DIAGRAM NTS



5 COOLER COIL IW PIPE DIAGRAM NTS

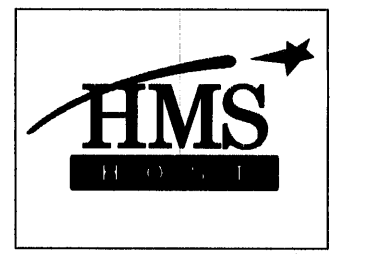


6 FLOOR DRAIN INSTALLATION (EX. SLAB) NTS

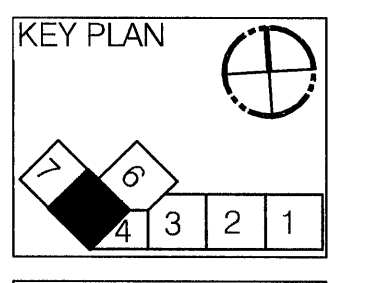
PLUMBING LEGEND

	ETR	LIGHT LINE INDICATES EXISTING PIPING TO REMAIN.
	RE	REMOVE EXISTING PIPING
	CTE	CONNECT TO EXISTING
	C&C	CUT & CAP
	CW	COLD WATER
	CW	COLD WATER BELOW FLOOR OR BURIED
	HW	HOT WATER
	HWR	HOT WATER RECIRCULATION
	S or W	SOIL OR WASTE
	S or W	SOIL OR WASTE BELOW FLOOR OR BURIED
	V	VENT
	V	VENT BELOW FLOOR OR BURIED
	G	NATURAL GAS
	HTI / TMC	HEAT TRACE AND INSULATE / TEMPERATURE MAINTENANCE CABLE
	CONT	CONTINUATION
	UP	PIPE RISE OR UP
	DN	PIPE DROP OR DOWN
	TEE	PIPE TEE
	SOV	SHUT-OFF VALVE
	PRV	PRESSURE REDUCING VALVE
	CV	CHECK VALVE
	BVA	BALANCING VALVE ASSEMBLY
	W & T	WASTE & TRAP
	CO	CLEANOUT PLUG
	FCO	FLUSH FLOOR CLEANOUT
	DCO	DANDY CLEANOUT
		CAPPED PIPE
		ARROW INDICATES DIRECTION OF FLOW
		ARROW INDICATES DIRECTION OF SLOPE
		UNION
	TP	TRAP PRIMER
	WH	WALL HYDRANT
		DIAGRAM NO. & DWG. NO. REFERENCE
	T	THERMOMETER
	PG	PRESSURE GAUGE WITH PETCOCK
	INV	INVERT
	TYP	TYPICAL
	NTS	NOT TO SCALE
	AFF	ABOVE FINISHED FLOOR
	LPC	LIMIT OF PLUMBING CONTRACT
	GC	GENERAL CONTRACTOR
	FPC	FIRE PROTECTION CONTRACTOR
	PC	PLUMBING CONTRACTOR
	EC	ELECTRICAL CONTRACTOR
	HVAC	HVAC CONTRACTOR
	F & I	FURNISH & INSTALL
	S=.01	SLOPE = 1/8" PER FOOT
	S=.02	SLOPE = 1/4" PER FOOT
	NO	NORMALLY OPEN
	NC	NORMALLY CLOSED
	F.F.E.	FINISHED FLOOR ELEVATION

Item	Date
PERMIT	5-27-11



Burger King
 Portland Int'l Jetport PWW
 1001 Westbrook Street
 Portland ME 04102



HMS Host
 6905 Rockledge Drive
 Bethesda, MD 20817
 T: (240) 694-4746
 F: (240) 694-4643
 C: (240) 274-6417
 E: scott.seimink@hmshost.com

Building Engineering Resources, Inc.
 66 Main Street
 North Easton, MA 02356
 T: (508) 230-0200
 F: (508) 230-0265
 E: ber@ber-engineering.com

L2M Foodservice Design Group
 811 Cromwell Park Drive, Suite 113
 Cromwell Business Park at BW1
 Glen Burnie, Maryland 21061
 T: (410) 863-1302
 F: (410) 863-1308
 E: FSDG@L2MFoodServiceDesign.com

LLOYD ARCHITECTS
 Two High Cliff, Plymouth MA 02360
 T: (508) 746-4646
 F: (508) 746-1236
 E-MAIL: info@lloydarch.com

Job No.:
 Scale: As noted
 Issued: 5-27-11

PLUMBING
 LEGEND
 & DETAILS

P-1.01

