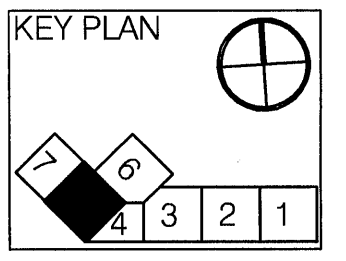


Item	Date
PERMIT	5-27-11



Burger King
 Portland Int'l Jetport PVM
 1001 Westbrook Street
 Portland ME 04102



HMS Host
 6905 Rockledge Drive
 Bethesda, MD 20817
 T: (240) 694-4746
 F: (240) 694-4643
 C: (240) 274-0417
 E: scott.rovinsky@hms-host.com

Building Engineering Resources, Inc.
 66 Main Street
 North Easton, MA 02556
 T: (508) 238-0200
 F: (508) 238-0265
 E: ber@ber-engineering.com

L2M Foodservice Design Group
 811 Cromwell Park Drive, Suite 113
 Cromwell Business Park at BWI
 Glen Burnie, Maryland 21061
 T: (410) 863-1302
 F: (410) 863-1308
 E: FSDG@L2MFoodServiceDesign.com

LLOYD ARCHITECTS
 Two High Cliff, Plymouth MA 01960
 TEL: (508) 746-1646
 FAX: (508) 746-1236
 E-MAIL: info@lloydarch.com

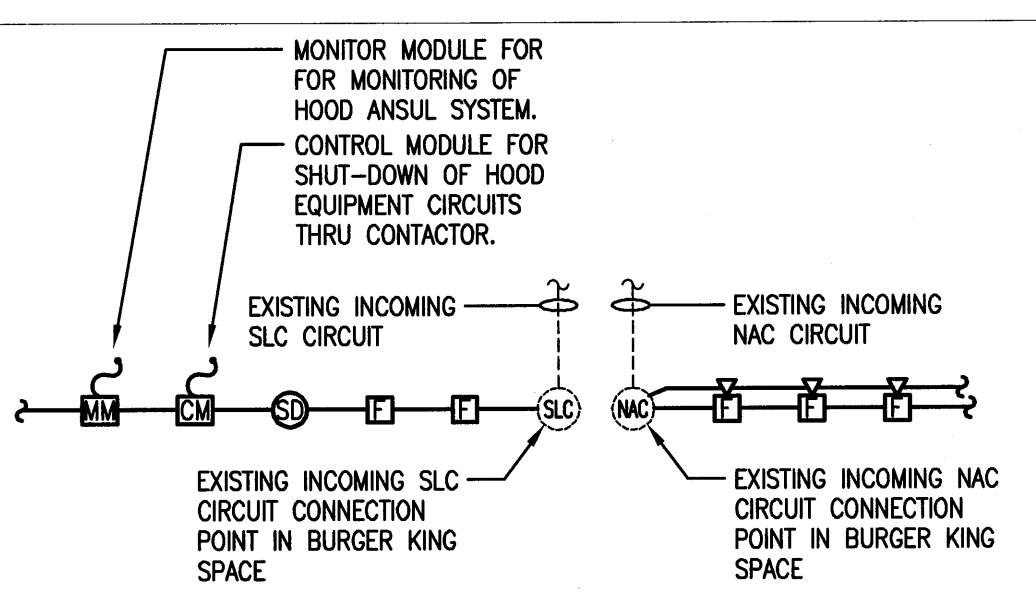
Job No.:
 Scale: As noted
 Issued: 5-27-11

**BURGER KING
 FIRE ALARM
 PLAN**

E-2.03

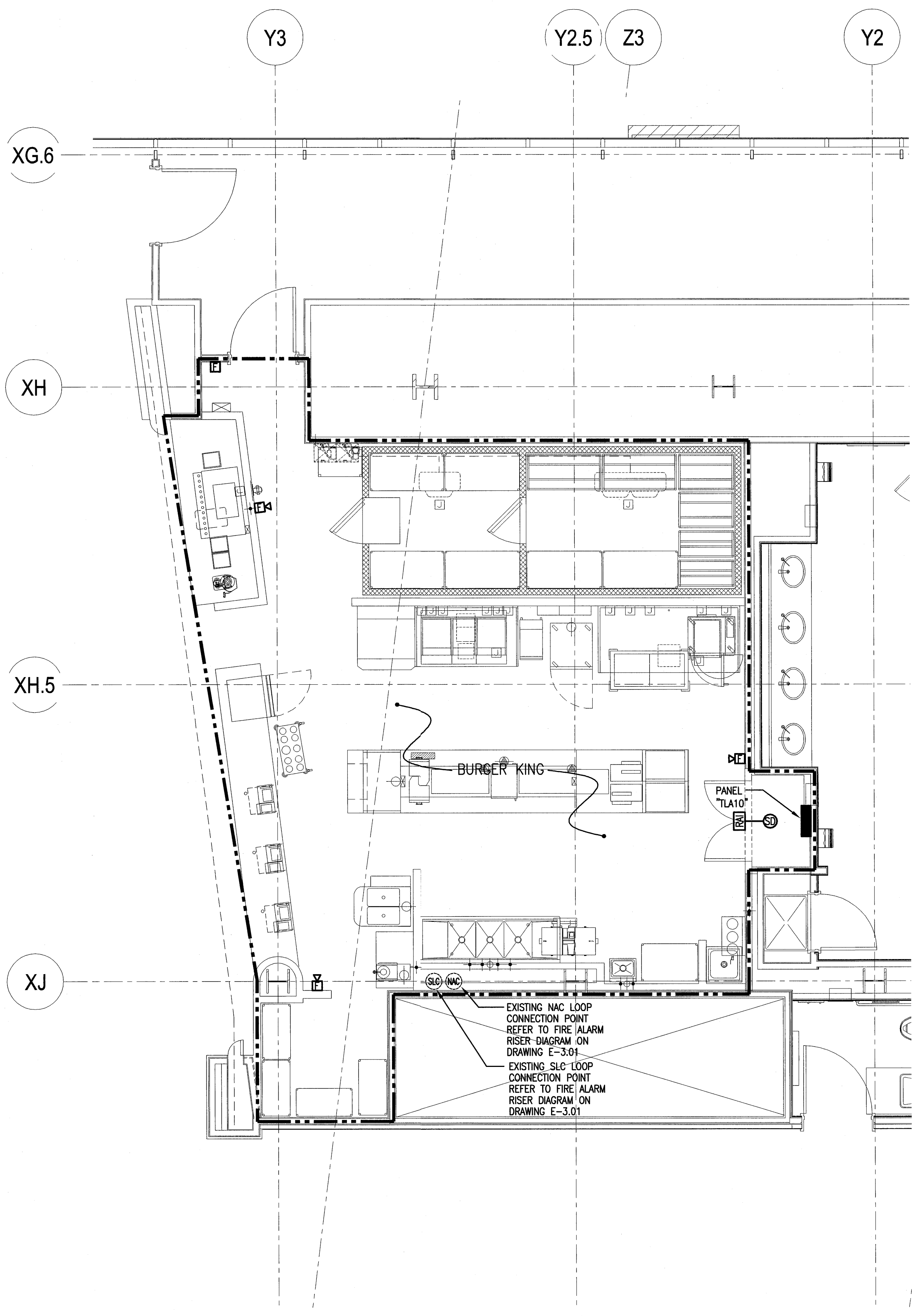
FIRE ALARM SYSTEM

- ☐ MANUAL PULL STATION MOUNTED 48" AFF
- ☐ AUDIO/VISUAL ALARM MOUNTED 80" AFF.
- ☐ SPEAKER STROBE MOUNTED 80" AFF.
- ▽ VISUAL ONLY UNIT MOUNTED 80" AFF.
- ⊙ PHOTOELECTRIC SMOKE DETECTOR
- ⊙ DUCT MOUNTED SMOKE DETECTOR WITH SAMPLING TUBE
- ⊙ REMOTE TEST STATION FOR DUCT SMOKE DETECTOR WITH NAMEPLATE LABELED ACCORDINGLY
- ⊙ REMOTE ALARM INDICATOR
- ⊙ ADDRESSABLE CONTROL MODULE
- ⊙ ADDRESSABLE MONITOR MODULE



2 FIRE ALARM RISER DIAGRAM
 NOT TO SCALE

FIRE ALARM NOTE:
 ALL FIRE ALARM WORK ASSOCIATED WITH THE BURGER KING TENANT SPACE SHALL CONFORM TO THE CITY OF PORTLAND "STANDARD FOR SIGNALING SYSTEMS FOR THE PROTECTION OF LIFE AND PROPERTY 2011 EDITION" REQUIREMENTS.



1 BURGER KING FIRE ALARM PLAN
 1/4"=1'-0"

