

**LEGEND**

- \* MOUNTING HEIGHTS SHALL BE AS INDICATED UNLESS SHOWN OTHERWISE ON ELECTRICAL DRAWINGS OR ARCHITECTURAL ELEVATIONS
- \* ALL SYMBOLS MAY NOT BE SHOWN ON PLANS

**RACEWAYS AND WIRING**

P4-1,3,5 SINGLE PHASE HOMERUNS TO PANELBOARD. "P4" DENOTES PANEL, "1,3,5" DENOTES CIRCUIT NUMBERS, (3) 20A, 1P CIRCUITS NUMBER OF SLASH MARKS DENOTES NUMBER OF #12AWG CONDUCTORS IN MINIMUM 3/4" C. NO SLASH MARKS INDICATE 2#12 & 1#12G-3/4" C UNLESS INDICATED OTHERWISE.

P4-2 MULTI-POLE HOMERUN TO PANELBOARD. "P4" DENOTES PANEL, "2" DENOTES CIRCUIT NUMBER, 20 AMP 3 POLE C/B. NUMBER OF SLASH MARKS DENOTES NUMBER OF #12AWG CONDUCTORS IN MINIMUM 3/4" C.

NOTES:  
1. GREEN GROUND CONDUCTOR NOT INDICATED BUT SHALL BE INCLUDED IN EACH RACEWAY. SIZE SHALL BE #12AWG UNLESS INDICATED OTHERWISE.

**LIGHTING FIXTURES**

FLUORESCENT LIGHTING FIXTURE RECESSED MOUNTED. "A" DENOTES FIXTURE TYPE, "2" DENOTES CIRCUIT NUMBER, "C" DENOTES SWITCH CONTROL.

RECESSED LIGHTING FIXTURE, REFER TO LIGHTING FIXTURE SCHEDULE FOR FIXTURE TYPES

CEILING MOUNTED ILLUMINATED EXIT SIGN, ARROWS AS INDICATED ON DRAWINGS

EMERGENCY BATTERY UNIT

**TOGGLE SWITCHES (MOUNTED 48" AFF)**

Soc SINGLE POLE TOGGLE SWITCH. "S" DENOTES FIXTURE CONTROL. "oc" DENOTES INTEGRAL OCCUPANCY SENSOR.

S3 THREE WAY TOGGLE SWITCH

**RECEPTACLES (MOUNTED 18" AFF OR AS INDICATED ON ARCHITECTURAL PLANS)**

DUPLEX RECEPTACLE, "2" DENOTES CIRCUIT NUMBER, "GF" DENOTES GROUND FAULT CIRCUIT INTERRUPTER TYPE DEVICE, "WP" DENOTES WEATHER PROOF COVER, "IG" DENOTES ISOLATED GROUND

SPECIAL PURPOSE RECEPTACLE

CEILING MOUNTED DUPLEX RECEPTACLE

**TELECOMMUNICATIONS (MOUNTED 18" AFF)**

TELEPHONE OUTLET

COMPUTER SYSTEM OUTLET

COMBINATION TELEPHONE/DATA OUTLET

NOTE: E.C. SHALL PROVIDE A DOUBLE GANG BACK BOX WITH SINGLE GANG REDUCER, 3/4" CONDUIT AND PULLSTRING STUBBED OUT ABOVE ACCESSIBLE CEILING.

**POWER DISTRIBUTION EQUIPMENT**

PANELBOARD, SURFACE MOUNTED

JUNCTION BOX, SIZED PER NEC

MOTOR, "2" DENOTES HORSEPOWER

MAGNETIC MOTOR STARTER WITH ENCLOSURE, MINIMUM SIZE NEMA 1

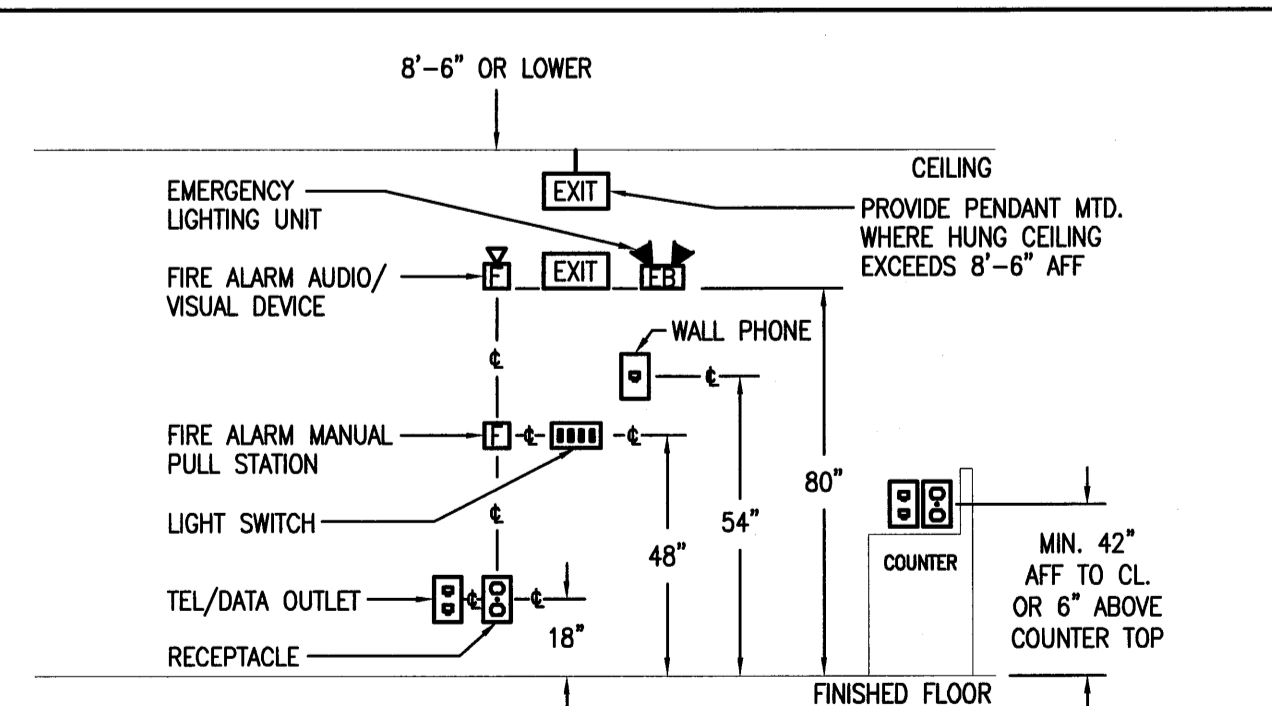
MANUAL MOTOR STARTER WITH THERMAL OVERLOAD. "P" DENOTES PILOT LIGHT

NON-FUSED DISCONNECT SWITCH: "30/3" DENOTES 30 AMP/3 POLE SWITCH

FUSED DISCONNECT SWITCH: "30/20/3" DENOTES 30 AMP/3 POLE SWITCH, 20 AMP FUSES

COMBINATION MAGNETIC STARTER AND FUSED DISCONNECT SWITCH. SIZE OF STARTER, SWITCH AND FUSE AS REQUIRED

DRY-TYPE DISTRIBUTION TRANSFORMER



NOTES:  
1. INSTALL DEVICES ON ONE COMMON VERTICAL CENTERLINE.  
2. INSTALL DEVICES AT THIS HEIGHT WHEREVER APPLICABLE.

DETAIL OF TYPICAL DEVICE MOUNTING HEIGHTS

NTS

**MISCELLANEOUS**

JUNCTION BOX WITH FLEXIBLE CONNECTION TO EQUIPMENT

EXHAUST FAN

CONTROL PANEL

CABLE TELEVISION OUTLET, WALL MOUNTED

**MECHANICAL EQUIPMENT TAG ABBREVIATIONS**

DENOTES EQUIPMENT TYPE

DENOTES UNIT NUMBER

AIR-COOLED CONDENSER

AIR HANDLING UNIT

EXHAUST FAN

EXHAUST HOOD

MAKE-UP AIR UNIT

ROOF TOP UNIT

VARIABLE AIR VOLUME BOX

ELECTRIC WATER HEATER

**ABBREVIATIONS**

AMPERES

ABOVE FINISHED FLOOR

ABOVE FINISHED GRADE

AMPERE INTERRUPTING CAPACITY

ARCHITECT

AMERICAN WIRE GAUGE

CONDUIT

CIRCUIT BREAKER

CIRCUIT

COPPER

DRAWING

ELECTRICAL CONTRACTOR

EXISTING TO REMAIN

GROUND

GENERAL CONTRACTOR

GROUND FAULT INTERRUPTER

ONE THOUSAND CIRCULAR MILS

KILOVOLT-AMPERES

KILOWATTS

MAIN CIRCUIT BREAKER

MAIN LUGS ONLY

NORMALLY CLOSED

NATIONAL ELECTRICAL CODE

NIGHT LIGHT

NORMALLY OPEN

NOT TO SCALE

PHASE

POLE

TELEPHONE

VOLT

VERIFY IN FIELD

WATT

WEATHERPROOF

TRANSFORMER

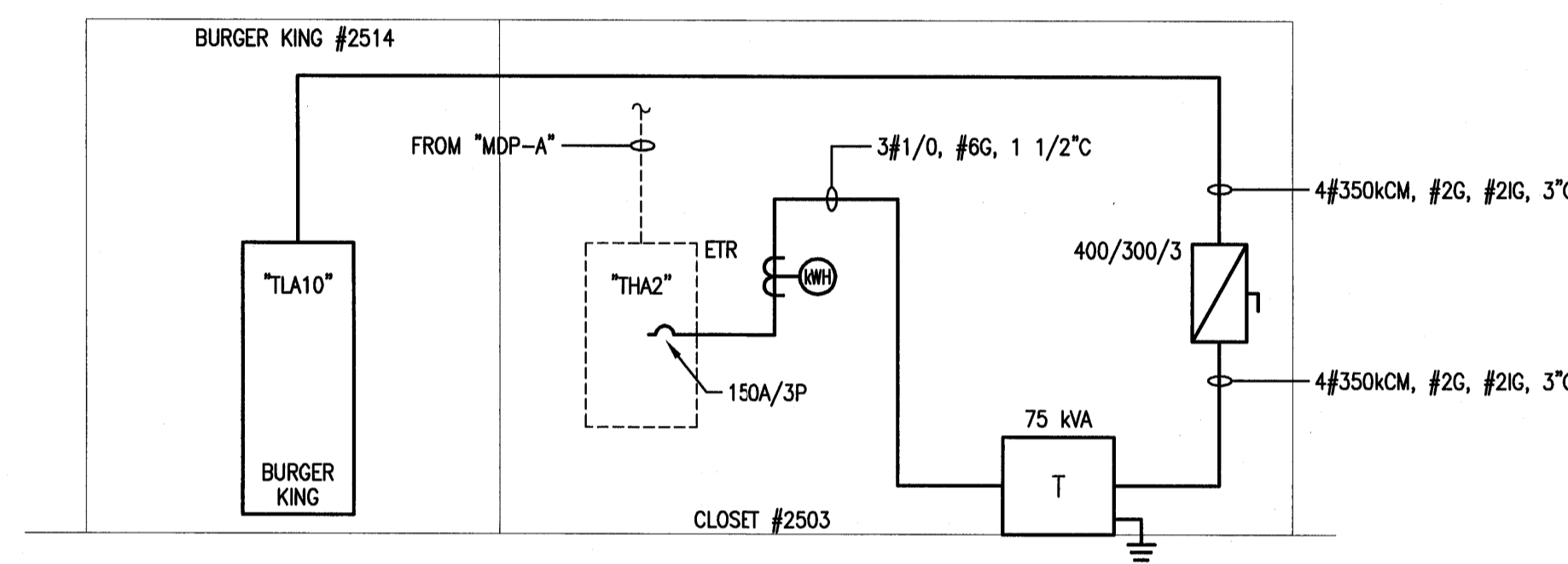
LIGHTING FIXTURE SCHEDULE						
TYPE	DESCRIPTION	MANUFACTURER & CATALOG NUMBER	LAMPS			REMARKS
			NUMBER	TYPE	VOLTS WATTS	
A	FLUORESCENT STRIP FIXTURE	COLUMBIA CH3121EU	1	21W T5	120 21	
D	RECESSED DOWNLIGHT	LSI SP7000A/7135BSBFL/BH27/LAMP-LMP2635	1	26W PLT	120 26	PROVIDE FIXTURE WITH SHATTER-PROOF LAMPS
G	2'x4' RECESSED FLUORESCENT LENSED TROFFER	LSI G432SDSS010LM735UE	4	32W T8	120 32	
RG	RECESSED FLUORESCENT WALL WASH	LSI NWM124SS5HOLM830UE	1	24W T5	120 24	PROVIDE FIXTURE WITH SHATTER-PROOF LAMPS
ES	L.E.D. EXIT SIGN	DUAL-LITE LXURWI		L.E.D.	120	
ELB	SELF-CONTAINED EMERGENCY LIGHTING UNIT	DUAL-LITE LSCI	2	10W HAL	120/6 10	

**LIGHTING FIXTURE NOTES:**

1. PROVIDE ACCESSORIES AND MOUNTING HARDWARE FOR ALL FIXTURES.
2. COLORS SHALL BE AS SELECTED BY ARCHITECT.
3. COORDINATE EXACT LOCATION WITH ARCHITECT PRIOR TO ROUGH-IN.
4. ALL COMPACT FLUORESCENT BALLASTS SHALL BE ELECTRONIC TYPE.
5. ALL FLUORESCENT LAMPS SHALL BE 3500K.

**BRANCH CIRCUIT WIRING NOTES:**

1. WIRING IS SHOWN ON DRAWINGS ONLY FOR SPECIFIC ROUTES OR SPECIAL CONDITIONS.
2. WIRING AND CONDUIT SHALL BE REQUIRED BETWEEN ALL OUTLETS INDICATED WITH CIRCUIT NUMBERS AND PANEL DESIGNATIONS.
3. ALL SWITCH CONTROLS SHALL BE PROVIDED WITH WIRING AND CONDUIT AS REQUIRED.
4. ALTHOUGH ALL BRANCH CIRCUIT WIRING AND CONDUIT IS NOT SHOWN, IT IS THE INTENT OF THESE DOCUMENTS THAT A COMPLETE BRANCH CIRCUIT WIRING SYSTEM BE INSTALLED.
5. A GREEN GROUNDING CONDUCTOR SHALL BE RUN WITH ALL CIRCUITS. VERIFY CONDUIT SIZE TO ENSURE IT CAN ACCOMMODATE ALL PHASE, NEUTRAL AND GROUND CONDUCTORS.
6. ALL 15A AND 20A, 125V RECEPTACLES IN NON-DWELLING TYPE KITCHENS MUST BE GFCI PROTECTED PER NEC ARTICLE 210.8(B)(2).

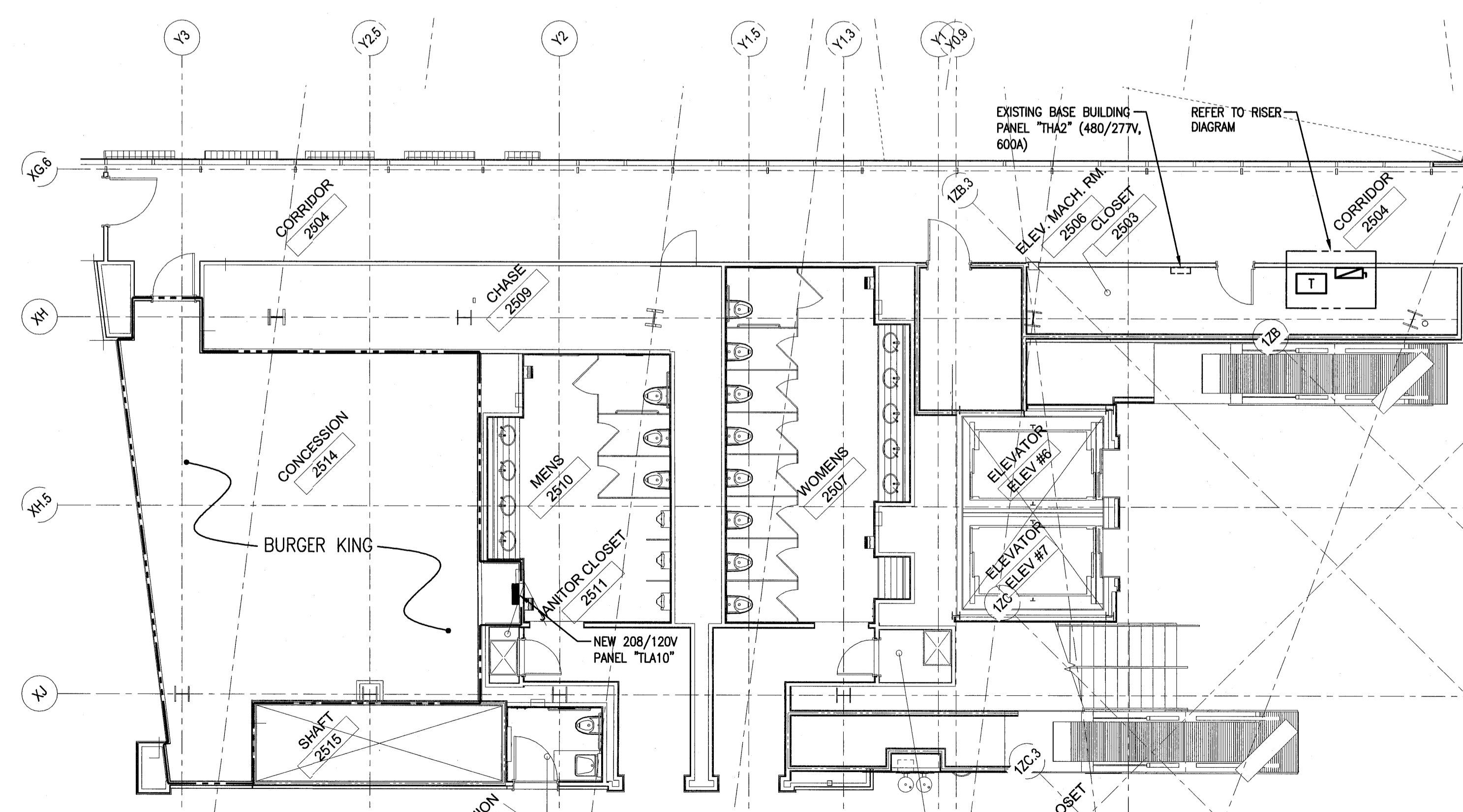


**1 ELECTRICAL RISER DIAGRAM**

NOT TO SCALE

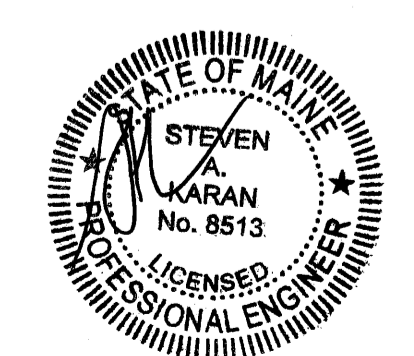
PANELBOARD SCHEDULE																				
PANEL DESIGNATION	VOLTS	PHASE	WIRES	MLO: MAIN LUGS ONLY MCB: MAIN CKT. BKR. OVERCURRENT DEVICE	BRANCH DEVICES							* TOTAL POLES	MOUNTING SURFACE: F. FLUSH	GROUND BUS	ADDITIONAL BRANCH C.B.'S	REMARKS				
					FRAME AMPS	TRIP AMPS	15	20	25	30	40						50	60	70	
TLA10	120/208	3	4	400	400	300	1	1	41	1						84	S	✓	(1) 200A/3P	PROVIDE SINGLE TUB 84 POLE PANELBOARD. PROVIDE ISOLATED GROUND BAR.

\* INCLUDES SPACES



**1 OVERALL 3RD FLOOR PART PLAN**

1/8" = 1'-0"

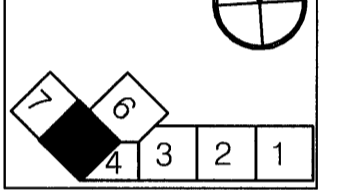


Item	Date
PERMIT	5-27-11



**Burger King**  
Portland Int'l Jetport PVM  
1001 Westbrook Street  
Portland ME 04102

**KEY PLAN**



HMS Host  
6905 Rockledge Drive  
Bethesda, MD 20817  
T: (240) 694-4746  
F: (240) 694-8643  
C: (240) 274-6417  
E: scott.reimink@hmshost.com

Building Engineering Resources, Inc.  
66 Main Street  
North Easton, MA 02356  
T: (508) 230-0206  
F: (508) 230-0265  
E: ber@ber-engineering.com

L2M Foodservice Design Group  
811 Cromwell Park Drive, Suite 113  
Cromwell Business Park at BWT  
Olen Bunn, Maryland 21061  
T: (410) 863-1302  
F: (410) 863-1308  
E: FSDG@l2mFoodServiceDesign.com

**LLOYD ARCHITECTS**  
Two High Cliff, Plymouth MA 02360  
TEL: (508) 746-4646  
FAX: (508) 746-1236  
E-MAIL: info@lloydarch.com

Job No.:  
Scale: As noted  
Issued: 5-27-11  
**BURGER KING**  
ELECTRICAL  
LEGEND, DETAILS,  
AND SCHEDULES

**E-1.01**