

SHEET NOTES

**Portland International
Jetport**
1001 Westbrook Street
Portland, Maine 04102

Gensler
2020 K Street, NW
Suite 200
Washington, DC 20006
Telephone 202.721.5200
Facsimile 202.872.8587

oest ASSOCIATES, INC.
343 Gorham Road, South Portland, ME 04106
P: (207) 761-1770 F: (207) 774-1246 www.oest.com
engineers • architects • surveyors • construction managers

amec
343 Gorham Road, South Portland ME 04106
P: (207) 761-1770 F: (207) 774-1246 www.amec.com

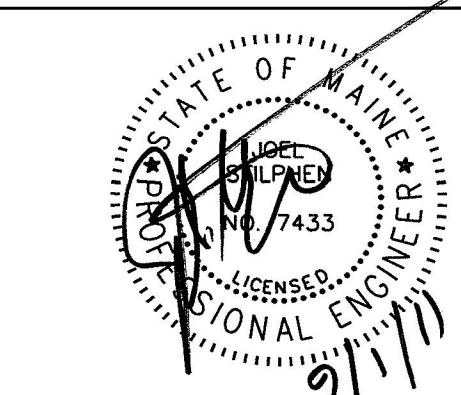
THESE DRAWINGS ARE ISSUED FOR
CONSTRUCTION AND REFLECT ALL AMEC
ISSUED BULLETINS AND SKETCHES.

Issue	Date & Issue Description	By	Check
01	07/11/08	PWZ	JS
02	09/22/08	PWZ	JS
03	12/03/08	KLM	JS
04	01/23/09	CM	JS
05	10/26/09	PWZ	JS
06	09/01/11	PWZ	JS

GENERAL NOTES

A SEE SHEET P00.00 FOR LEGEND AND
GENERAL NOTES.

Seal/Signature



Project Name
PJM Terminal Enhancement

Project Number
08.6395.000

CAD File Name
T:\6330101\Sheets\P02.RP.04.dwg

Description
PLUMBING PLAN - ROOF - ZONE 4

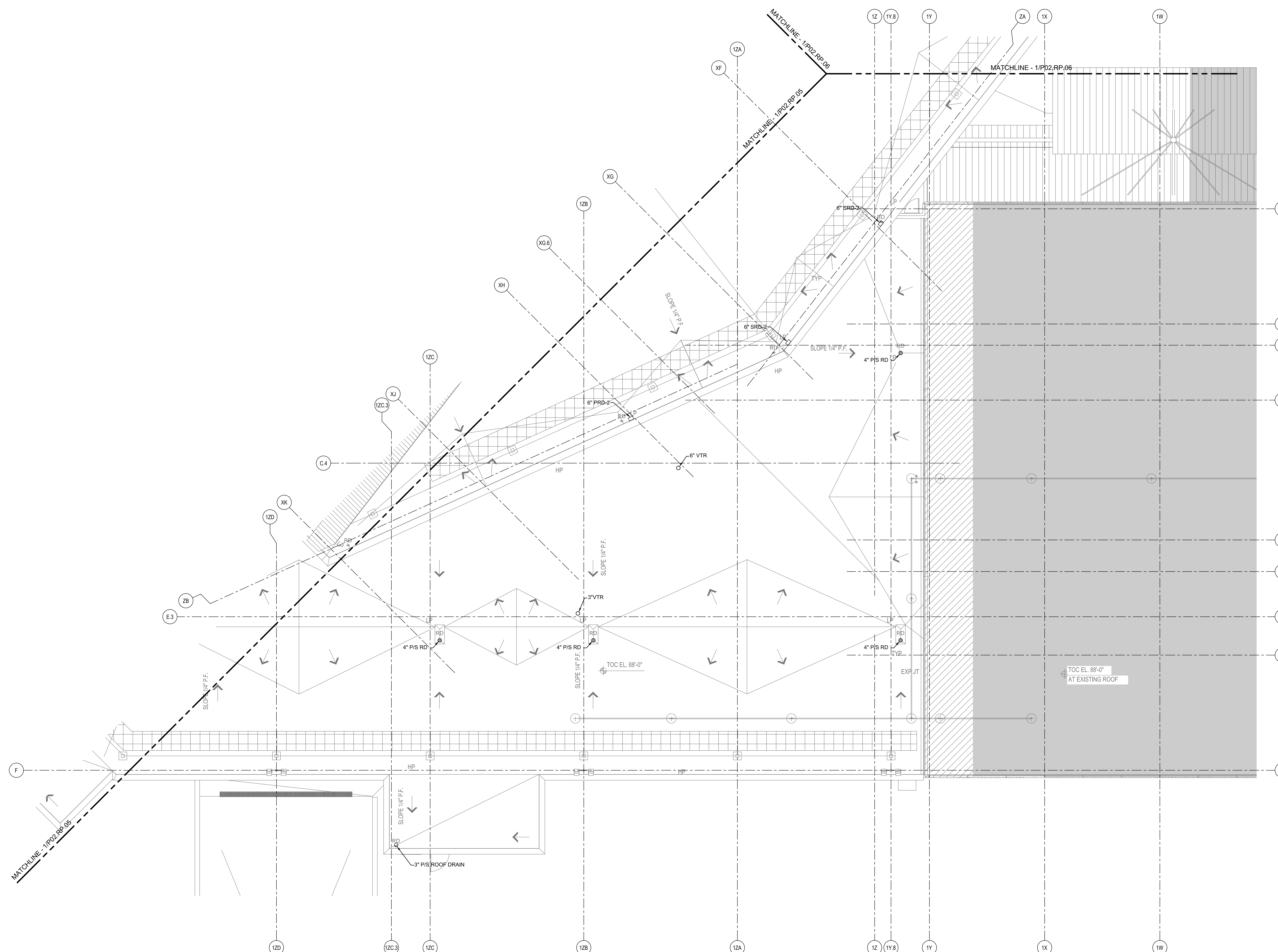
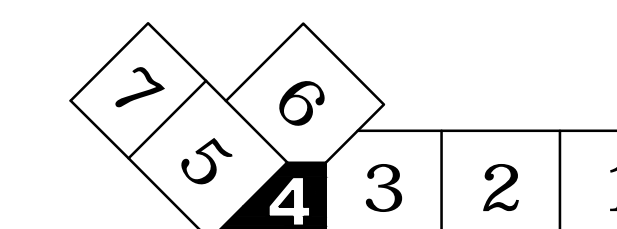
Scale
1/8" = 1'-0"



P02.RP.04

©2009 Gensler

KEY PLAN



PLUMBING PLAN - ROOF - ZONE 4
SCALE: 1/8" = 1'-0"