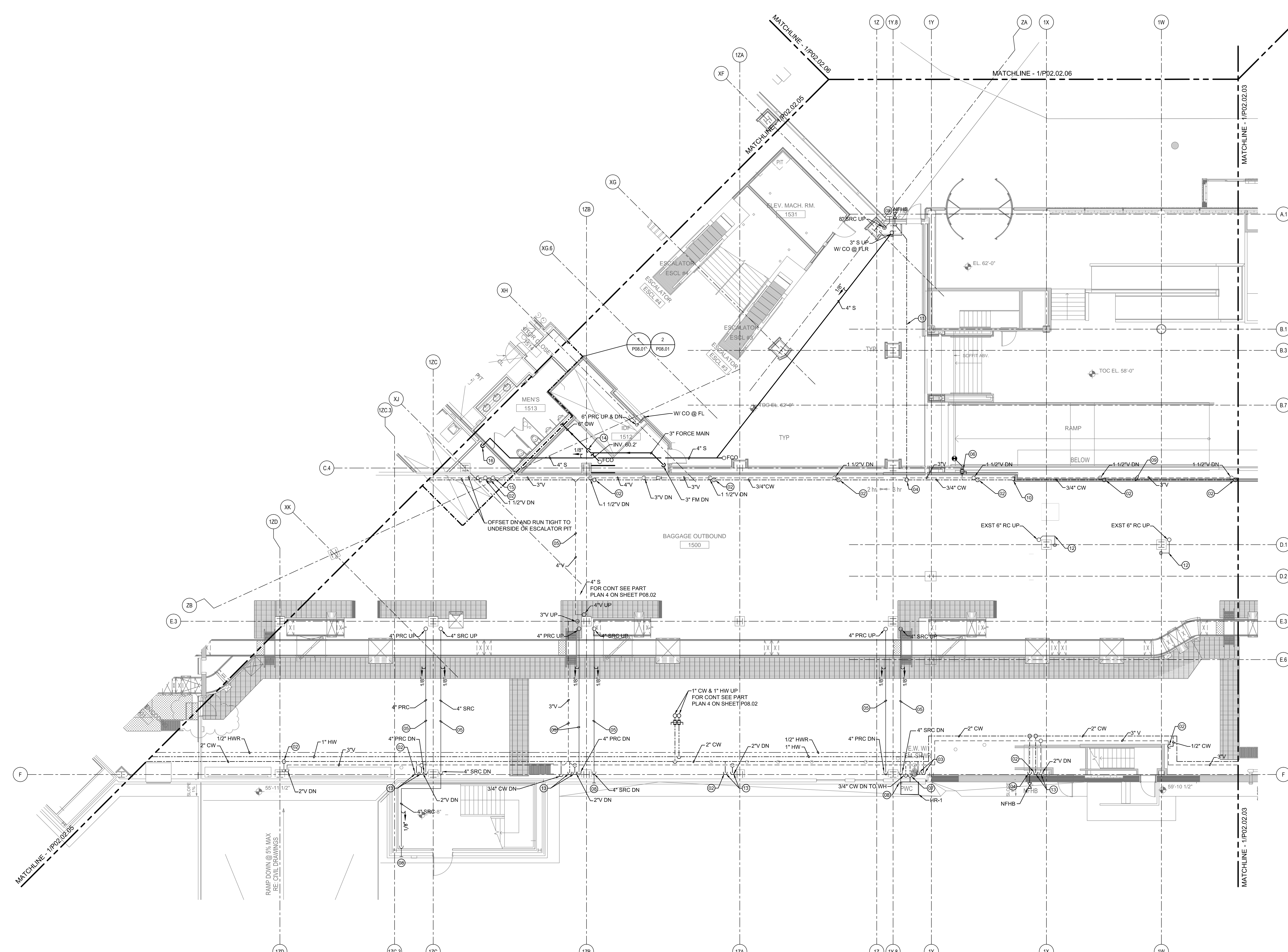


SHEET NOTES

- 01 NOT USED
- 02 1/2" CW DN W/ BALL VALVE TO TRAP PRIMER.
- 03 3/4" HW & CW DN TO P-6.
- 04 3/4" CW W/ BALL VALVE DN TO NFHB.
- 05 BOTTOM OF PIPING INCLUDING INSULATION MUST BE KEPT ABOVE BOTTOM OF ADJACENT STEEL BEAM.
- 06 CONNECT TO EXST 1/2" CW FHE TO EXST RADIANT SNOW MELT SYSTEM W/ BALL VALVE.
- 07 1" DN W/ BALL VALVE & DRAIN TO HR-1
- 08 TERMINATE SRC 12" ABOVE FINISHED GRADE WITH DC.
- 09 RUN LINES TIGHT TO UNDERSIDE OF SOFFIT.
- 10 DROP LINES BELOW SOFFIT.
- 11 3/4" PEX BELOW FL TO NFHB
- 12 OFFSET 6" RC BELOW BEAM & RUN ON COLUMN.
- 13 RUN PIPING ON SIDES OF COLUMN, KEEP FACE OF COLUMN CLEAR FOR INSTALLATION OF SECURITY & ALARM EQUIPMENT & APPARATUS.
- 14 TIE 3" FORCE MAIN INTO TOP OF 4" OW W/ 45° WYE.
- 15 2" V UP FROM LP-3. FOR CONT REFER TO PART PLAN 1 ON SHEET P08.01
- 16 4" S DN TO LP-3. FOR CONT REFER TO PART PLAN 1 ON SHEET P08.01



THESE DRAWINGS ARE ISSUED FOR CONSTRUCTION AND REFLECT ALL AMEC ISSUED BULLETINS AND SKETCHES.

Issue	Date & Issue Description	By	Check
01	07/11/08	PWZ	JS
02	09/22/08	PWZ	JS
DESIGN DEVELOPMENT			
03	12/03/08	KLM	JS
75% CONSTRUCTION DOCUMENTS			
04	01/23/09	CM	JS
95% CONSTRUCTION DOCUMENTS			
05	10/26/09	PWZ	JS
ISSUED FOR PERMIT			
2	06 11/12/09	PWZ	JS
ADDENDUM #2			
07	04/23/10	PWZ	JS
BULLETIN 6C			
08	05/03/10	PWZ	JS
BULLETIN 10			
09	07/30/10	PWZ	JS
BULLETIN 30			
10	09/01/11	PWZ	JS
ISSUED FOR CONSTRUCTION			

GENERAL NOTES

- A SEE SHEET P00.00 FOR LEGEND AND GENERAL NOTES.
- B DO NOT RUN WATER OR DRAIN PIPING OVER ELECTRICAL PANELS OR SWITCH GEAR.
- C COORDINATE PLUMBING FLOOR PENETRATIONS WITH IN-FLOOR RADIANT HEAT.

KEY PLAN

