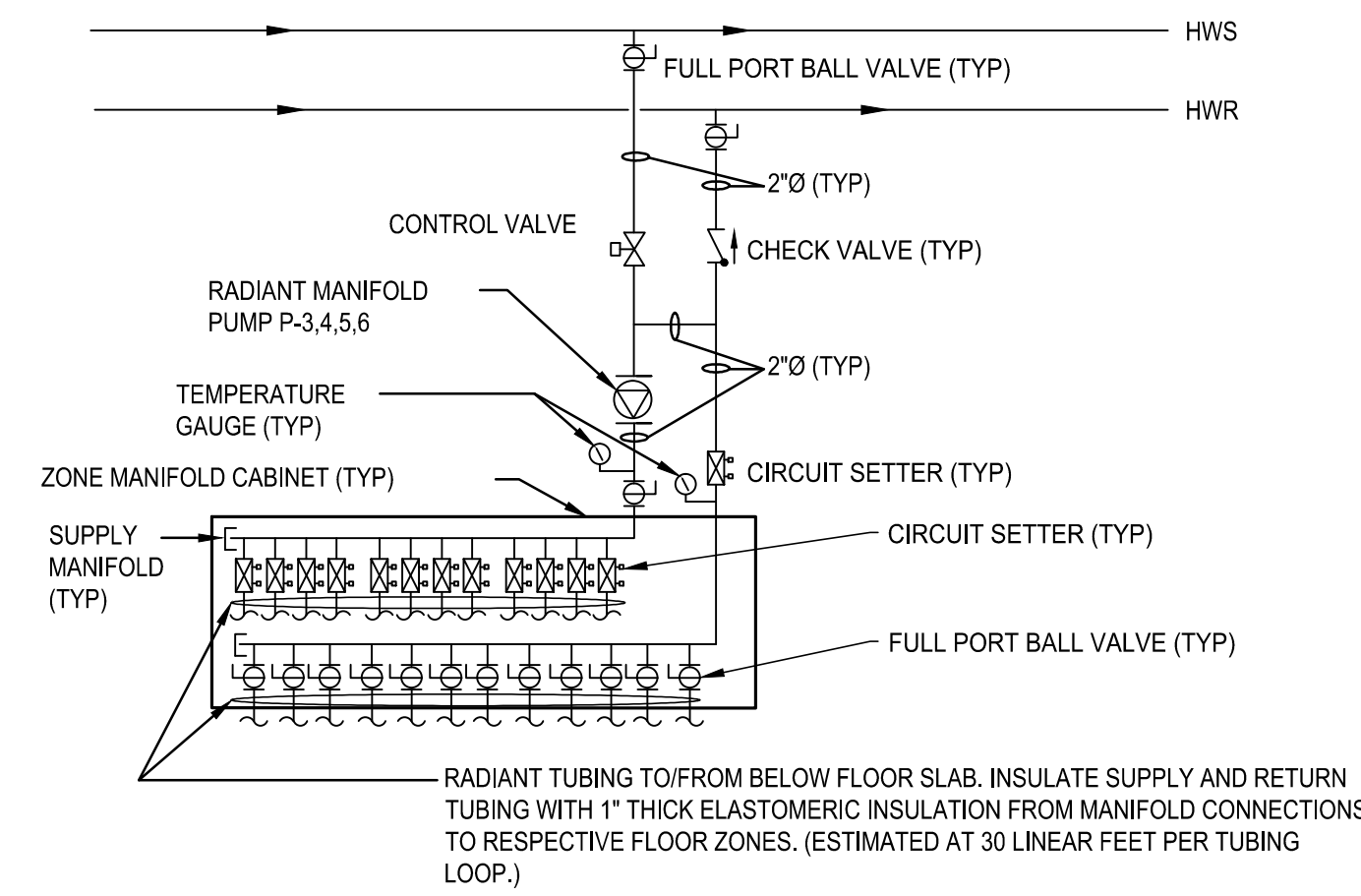
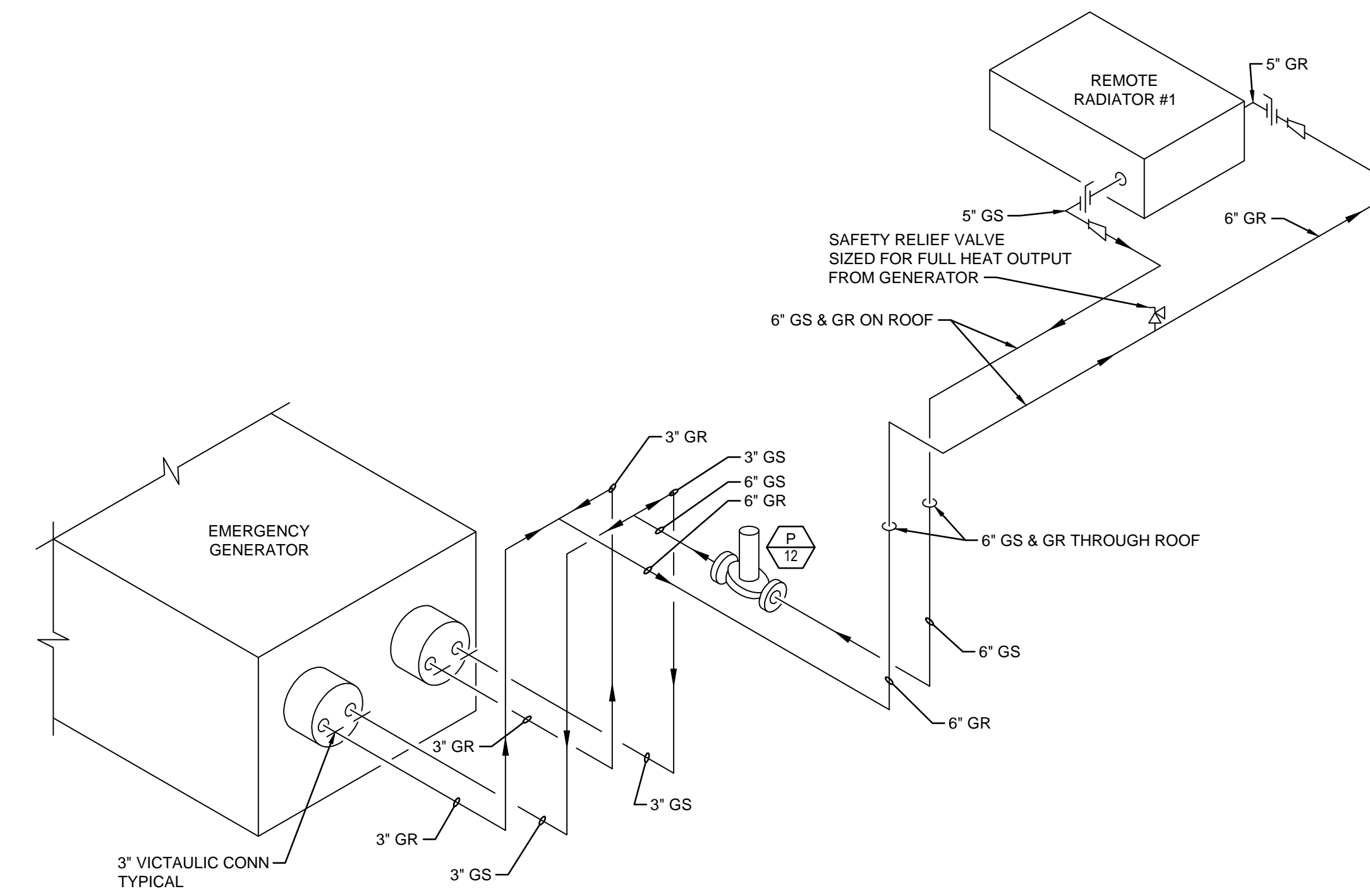


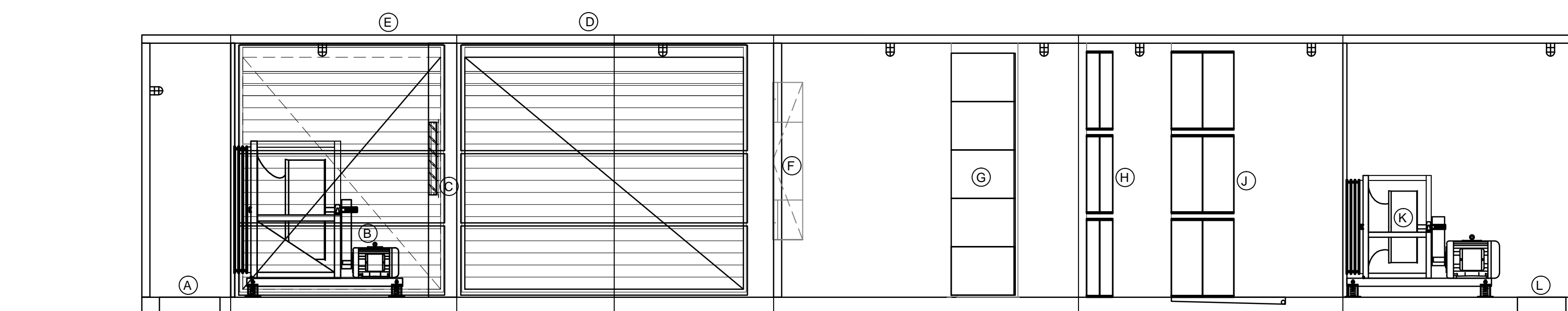
**SNOW MELT MANIFOLD AND PIPING SCHEMATIC 1**  
SCALE: NOT TO SCALE



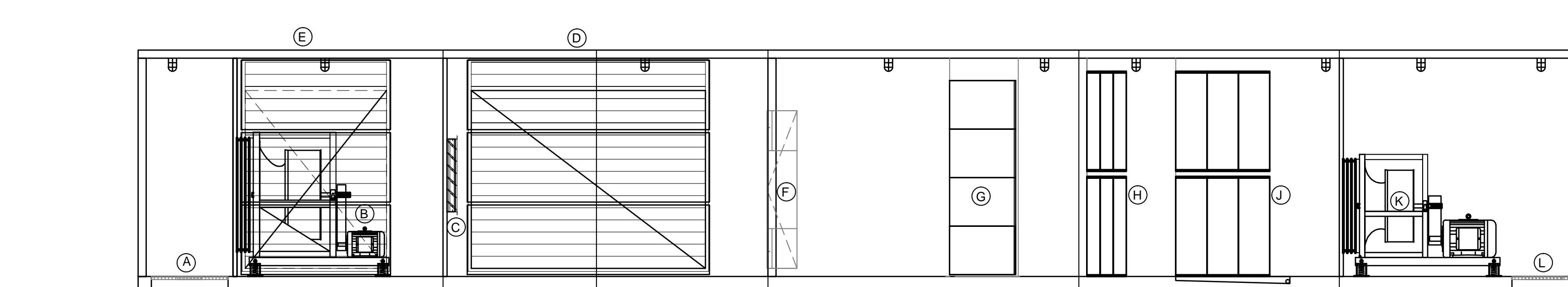
**RADIANT FLOOR MANIFOLD AND PIPING DETAIL 2**  
SCALE: NOT TO SCALE



**GENERATOR REMOTE RADIATOR PIPING DETAIL 3**  
SCALE: NOT TO SCALE



**AHU-1 UNIT CONFIGURATION ELEVATION 4**  
SCALE: NOT TO SCALE



**AHU-1 UNIT CONFIGURATION ELEVATION 5**  
SCALE: NOT TO SCALE

**SHEET NOTES**

**GENERAL NOTES**

A SEE SHEET M00.00 FOR LEGEND AND GENERAL NOTES.

**Portland International Jetport**  
1001 Westbrook Street  
Portland, Maine 04102

**Gensler**

2020 K Street, NW  
Suite 200  
Washington, DC 20006  
Telephone 202.721.5200  
Facsimile 202.872.8587

**nest ASSOCIATES, INC.**  
343 Gorham Road, South Portland, ME 04106 P: (207) 761-1770 F: (207) 774-1246 www.nest.com  
engineers • architects • surveyors • construction managers

**amec**  
343 Gorham Road, South Portland ME 04106  
P: (207) 761-1770 F: (207) 774-1246 www.amec.com

THESE DRAWINGS ARE ISSUED FOR CONSTRUCTION AND REFLECT ALL AMEC ISSUED BULLETINS AND SKETCHES.

Issue	Date & Issue Description	By	Check
01	10/26/09	PWZ	RHB
1	02 ISSUED FOR PERMIT	PWZ	RHB
	11/12/09	PWZ	RHB
	ADDENDUM #2		
03	09/01/11	PWZ	RHB
	ISSUED FOR CONSTRUCTION		

Seal/Signature  
ROBERT BROWN  
No. 4602  
09/01/11

Project Name  
PJM Terminal Enhancement  
Project Number  
08.0395.000  
CAD File Name  
T:SS30101\Sheets\M12.14.dwg  
Description  
MECHANICAL DETAILS

Scale  
NOT TO SCALE

**M12.14**

©2009 Gensler