

SHEET NOTES

01 INSTALL RADIATOR ON STEEL SUPPORTS AND ARRANGE FOR DISCHARGE AWAY FROM ANY AIR INTAKES WITHIN 25 FEET. MECH CONTRACTOR TO FURNISH SUFFICIENT 40% GLYCOL SOLUTION TO ACCOMMODATE FULL SYSTEM VOLUME.

Portland International Jetport
 1001 Westbrook Street
 Portland, Maine 04102

Gensler
 2020 K Street, NW
 Suite 200
 Washington, DC 20006
 Telephone 202.771.5200
 Facsimile 202.872.8587

nest ASSOCIATES, INC.
 343 Gorham Road, South Portland, ME 04106
 P: (207) 761-1770 F: (207) 774-1246 www.nest.com
 engineers • architects • surveyors • construction managers

amec
 343 Gorham Road, South Portland ME 04106
 P: (207) 761-1770 F: (207) 774-1246 www.amec.com

THESE DRAWINGS ARE ISSUED FOR CONSTRUCTION AND REFLECT ALL AMEC ISSUED BULLETINS AND SKETCHES.

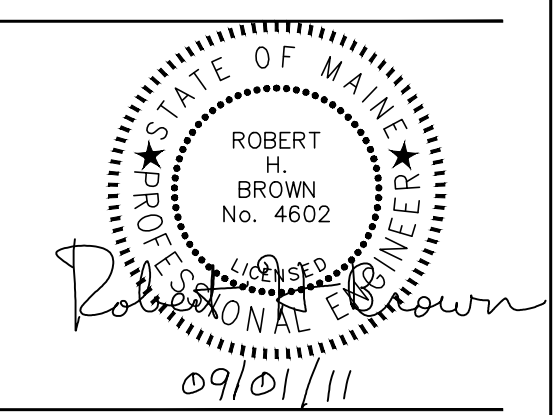
| Issue | Date & Issue Description | By | Check |
|-------|--------------------------|-----|-------|
| 01 | 01/23/09 | PWZ | RHB |
| 02 | 10/26/09 | PWZ | RHB |
| 03 | 05/03/10 | PWZ | RHB |
| 04 | 09/01/11 | PWZ | RHB |

GENERAL NOTES

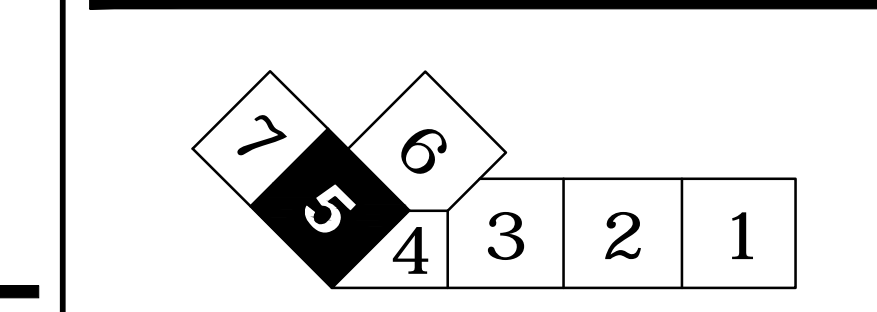
A SEE SHEET M00.00 FOR LEGEND AND GENERAL NOTES.

Project Name
 P1W Terminal Enhancement

Project Number
 08.6395.000
 CAD File Name
 T:\6330101\Sheets\M04.RP.05.dwg
 Description
 MECHANICAL PLAN - ROOF - ZONE 5



KEY PLAN



MECHANICAL PLAN - ROOF - ZONE 5
 SCALE: 1/8" = 1'-0"