

SHEET NOTES

01 PROVIDE 42"x40" TITUS 350FL EXHAUST REGISTER W/ TYPE 1 BORDER.

Portland International Jetport

1001 Westbrook Street
Portland, Maine 04102

Gensler

2020 K Street, NW
Suite 200
Washington, DC 20006
Telephone 202.771.5200
Facsimile 202.872.8587

nest ASSOCIATES, INC.
engineers • architects • surveyors • construction managers

amec
343 Gorham Road, South Portland ME 04106
P: (207) 761-1770 F: (207) 774-1246 www.amec.com

THESE DRAWINGS ARE ISSUED FOR CONSTRUCTION AND REFLECT ALL AMEC ISSUED BULLETINS AND SKETCHES.

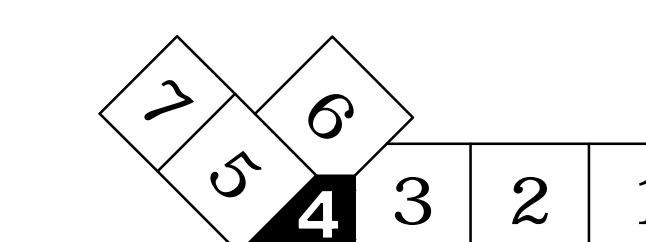
Issue	Date & Issue Description	By	Check
01	07/11/08	PWZ	RHB
02	09/22/08	PWZ	RHB
03	12/03/08	PWZ	RHB
04	01/23/09	PWZ	RHB
05	10/26/09	PWZ	RHB
2	06 11/12/09	PWZ	RHB
07	01/25/10	PWZ	RHB
08	02/28/10	PWZ	RHB
09	09/01/11	PWZ	RHB

GENERAL NOTES

A SEE SHEET M00.00 FOR LEGEND AND GENERAL NOTES.

B SUPPLY DUCTWORK SHALL BE SMACNA 10 INCH PRESSURE CLASS FROM AIR HANDLER OUTLET CONNECTIONS TO THE FAN POWERED VAV BOXES IN ALL AREAS AND TO THE SUPPLY REGISTERS AND GRILLES IN THE BAGGAGE HANDLING SPACE. RETURN DUCTWORK SHALL BE SMACNA 10 INCH PRESSURE CLASS FROM THE INLET OPENINGS TO THE AIR HANDLER CONNECTIONS.

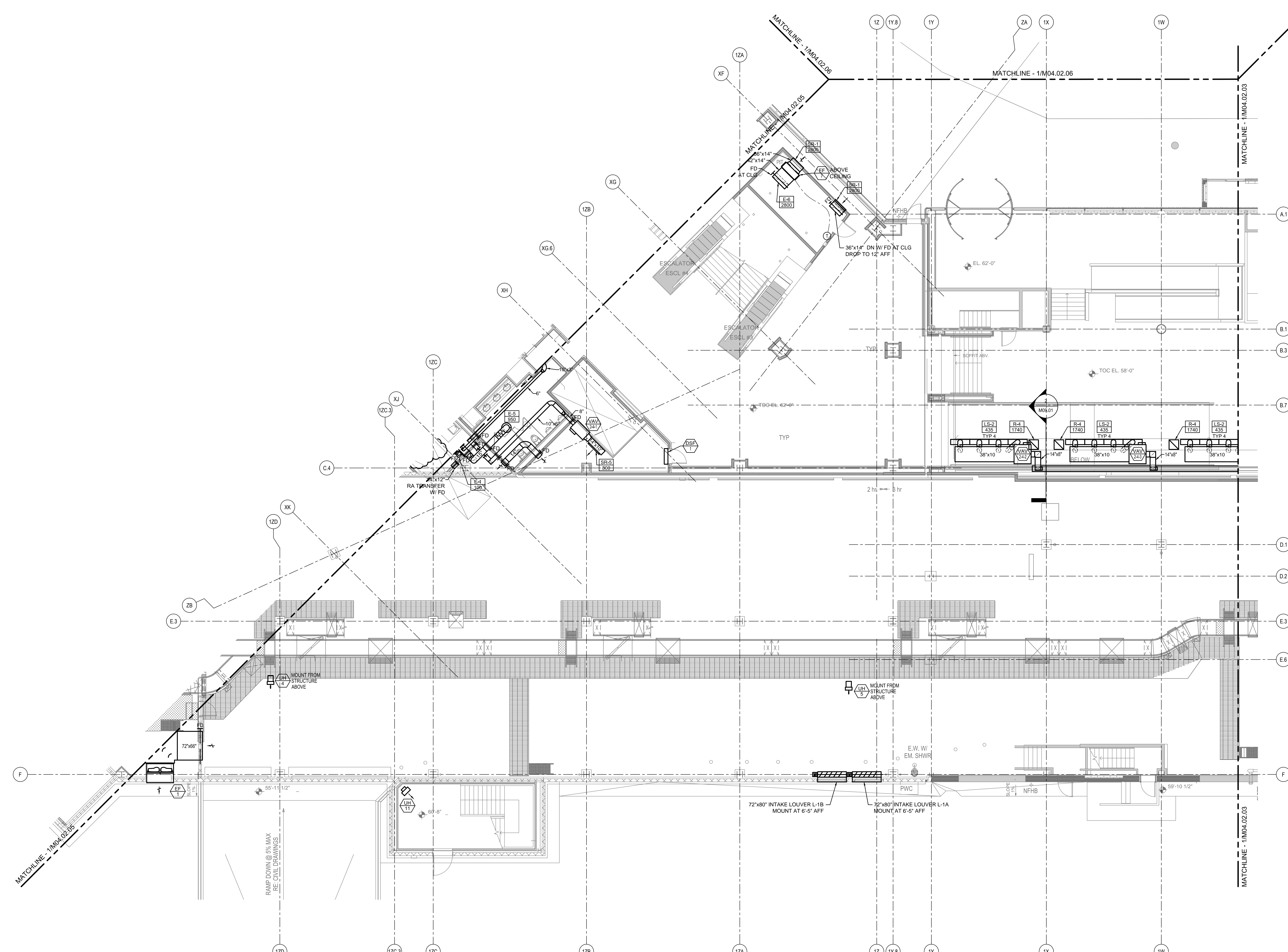
KEY PLAN



Scale
1/8" = 1'-0"

M04.02.04

©2009 Gensler



MECHANICAL DUCTWORK PLAN - LEVEL 2 - ZONE 4

SCALE: 1/8" = 1'-0"