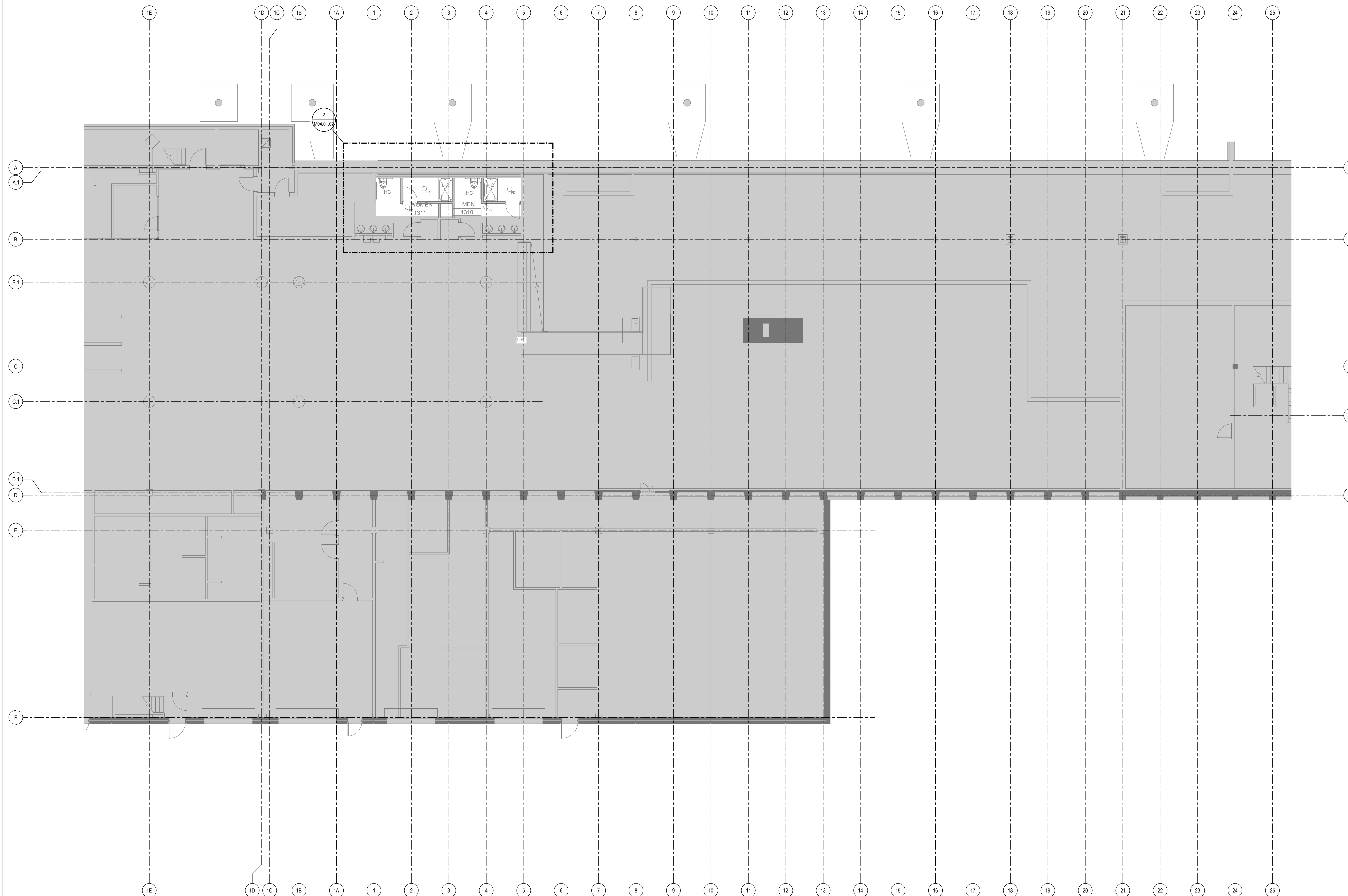


MECHANICAL ENLARGED PLAN
SCALE: 1/8" = 1'-0" **2**



MECHANICAL DUCTWORK PLAN - LEVEL 1 - ZONE 2
SCALE: 1/8" = 1'-0" **1**

SHEET NOTES

- 01 REINSTALL CABINET UNIT HEATER SALVAGED DURING DEMOLITION.
- 02 REINSTALL CABINET UNIT HEATER SALVAGED DURING DEMOLITION. EXTEND 3/4" HWS & HWR PIPING TO NEW LOCATION. RUN PIPING CONCEALED IN WALL. PROVIDE NEW SHUT OFF VALVES ACCESSIBLE FROM INSIDE UNIT ENCLOSURE.
- 03 ALUMINUM DUCTWORK. FABRICATE AND INSTALL PER LATEST SMACNA SPECIFICATIONS.

**Portland International
Jetport**

1001 Westbrook Street
Portland, Maine 04102

Gensler

2020 K Street, NW
Suite 200
Washington, DC 20006
Telephone 202.721.5200
Facsimile 202.872.8587

nest ASSOCIATES, INC.
343 Gorham Road, South Portland, ME 04106
P: (207) 761-1770 F: (207) 774-1246 www.nest.com
engineers • architects • surveyors • construction managers

amec

343 Gorham Road, South Portland ME 04106
P: (207) 761-1770 F: (207) 774-1246 www.amec.com

THESE DRAWINGS ARE ISSUED FOR CONSTRUCTION AND REFLECT ALL AMEC ISSUED BULLETINS AND SKETCHES.

Issue	Date & Issue Description	By	Check
01	08/20/11	PWZ	RHB
BULLETIN 116			
02	09/01/11	PWZ	RHB
ISSUED FOR CONSTRUCTION			

GENERAL NOTES

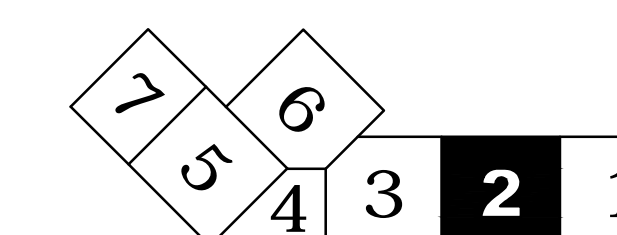
A SEE SHEET M00.00 FOR LEGEND AND GENERAL NOTES.

Seal/Signature

 Project Name: P1W Terminal Enhancement
 Date: 09/01/11

Project Number: 08.0395.000
 CAD File Name: T:\6333\101\Sheets\M04.01.02.dwg
 Description: MECHANICAL DUCTWORK PLAN - LEVEL 1 - ZONE 2

KEY PLAN



Scale: 1/8" = 1'-0"

M04.01.02

©2009 Gensler