

**SHEET NOTES**

- 01 PROVIDE 1" VALVED LTHWS & LTHWR FOR FUTURE INSTALLATION OF VAV BOX.
- 02 RUN HTHWS/HTHWR CONCEALED IN FINNED RADIATION ENCLOSURE.

**Portland International Jetport**

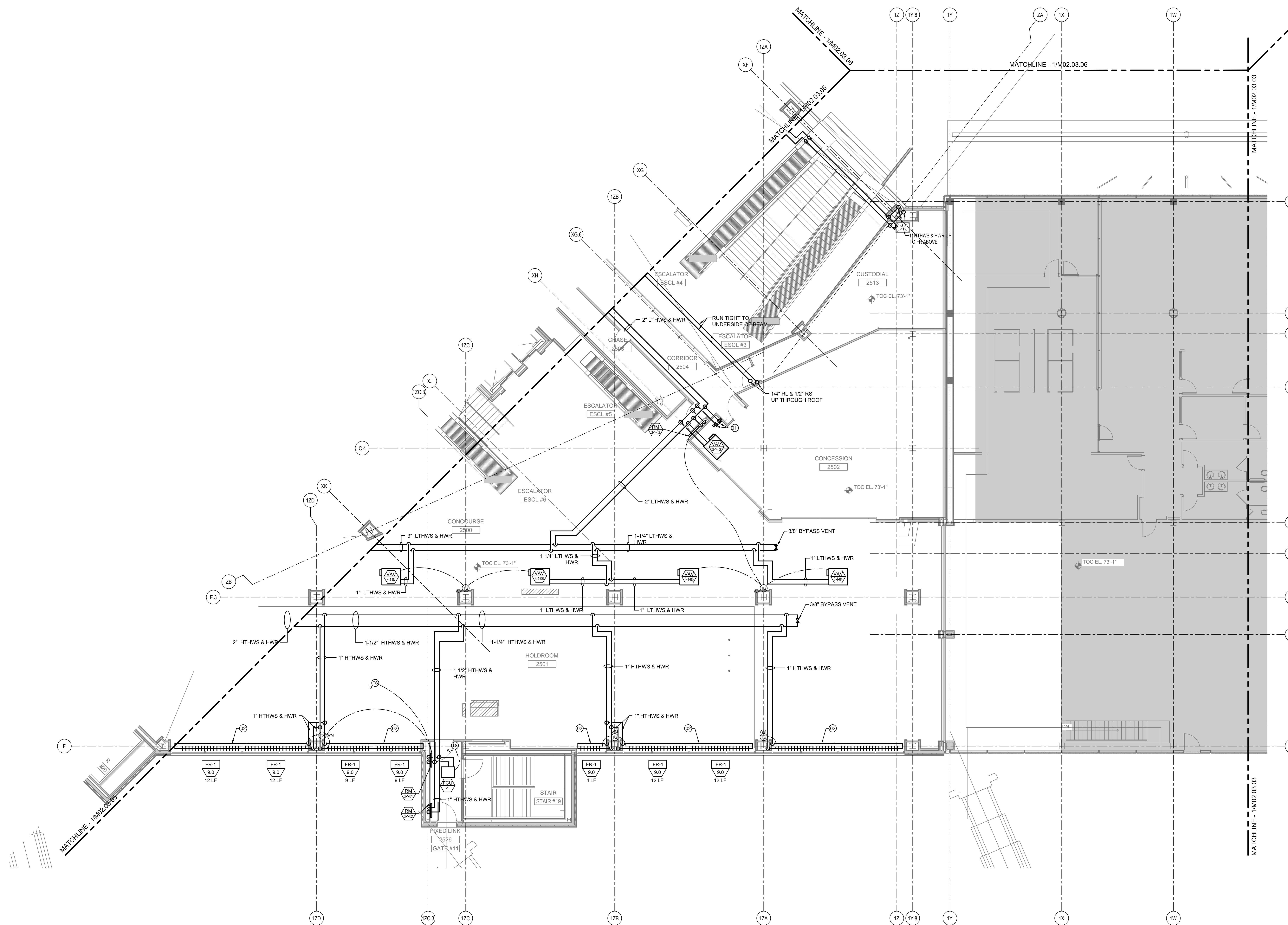
1001 Westbrook Street  
Portland, Maine 04102

**Gensler**

2020 K Street, NW  
Suite 200  
Washington, DC 20006  
Telephone 202.771.5200  
Facsimile 202.872.8587

**nest ASSOCIATES, INC.**  
engineers • architects • surveyors • construction managers

**amec**  
343 Gorham Road, South Portland ME 04106  
P: (207) 761-1770 F: (207) 774-1246 www.amec.com



THESE DRAWINGS ARE ISSUED FOR CONSTRUCTION AND REFLECT ALL AMEC ISSUED BULLETINS AND SKETCHES.

Issue	Date & Issue Description	By	Check
01	07/11/08	PWZ	RHB
02	09/22/08	PWZ	RHB
03	12/03/08	PWZ	RHB
04	01/23/09	PWZ	RHB
05	10/26/09	PWZ	RHB
06	05/21/10	PWZ	RHB
07	09/01/11	PWZ	RHB

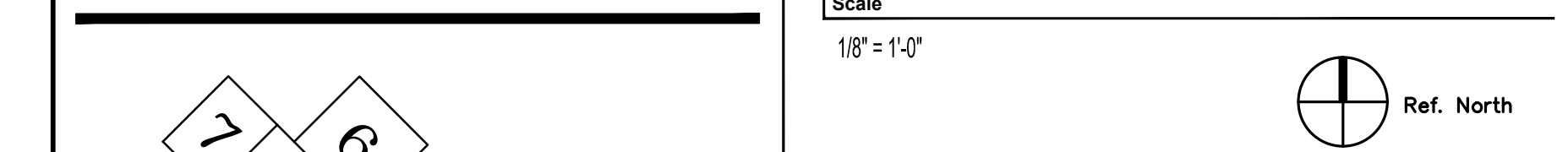
**GENERAL NOTES**

- A SEE SHEET M00.00 FOR LEGEND AND GENERAL NOTES.
- B MAINTAIN 18" MIN CLEARANCE FROM RADIANT TUBING TO FLOOR DRAINS, COLUMN WRAPS, PLUMBING FIXTURES, EQUIPMENT SUPPORTS, AND PIPING AT FLOORS.
- C RUN ALL PIPING HIGH AS POSSIBLE WITHIN BEAM POCKET TO AVOID CEILING MOUNTED EQUIPMENT & FIXTURES.

Seal/Signature  
  
 Project Name  
 P/W Terminal Enhancement

Project Number  
 08.6395.000  
 CAD File Name  
 T:\6330101\Sheet\M02.03.04.dwg  
 Description  
 MECHANICAL PIPING PLAN - LEVEL 3 - ZONE 4

**KEY PLAN**



**MECHANICAL PIPING PLAN - LEVEL 3 - ZONE 4**  
SCALE: 1/8" = 1'-0"