

SHEET NOTES

01 RE-INSTALL EXISTING FIXTURE AND RE-CONNECT TO EXISTING LIGHTING CIRCUIT.

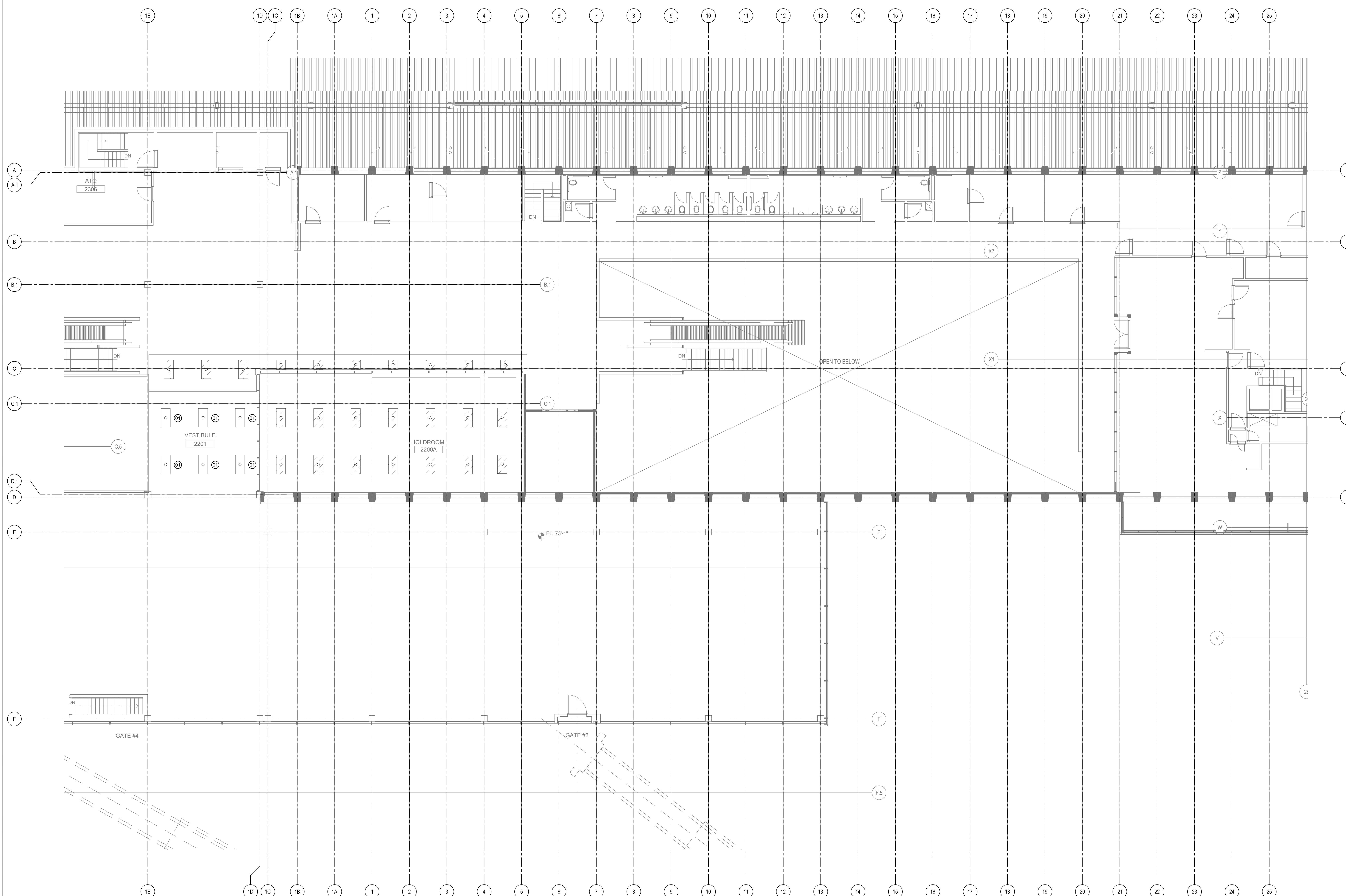
Portland International Jetport

1001 Westbrook Street
Portland, Maine 04102

Gensler
2020 K Street, NW
Suite 200
Washington, DC 20006
Telephone 202.721.5200
Facsimile 202.872.8587

oest ASSOCIATES, INC.
343 Gorham Road, South Portland, ME 04106
P: (207) 761-1770 F: (207) 774-1246 www.oest.com
engineers - architects - surveyors - construction managers

amec
343 Gorham Road, South Portland ME 04106
P: (207) 761-1770 F: (207) 774-1246 www.amec.com



ELECTRICAL LIGHTING PLAN - LEVEL 3 - ZONE 2
SCALE: 1/8" = 1'-0"

1

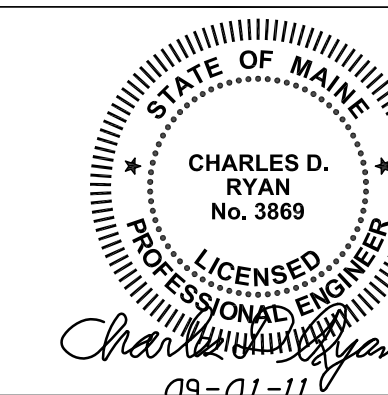
GENERAL NOTES

- A SEE SHEET E00.00 FOR LEGEND AND GENERAL NOTES.
- B UNLESS OTHERWISE NOTED ALL LIGHTING FIXTURES SHOWN ARE EXISTING AND SHALL REMAIN ON EXISTING CIRCUIT.

THESE DRAWINGS ARE ISSUED FOR CONSTRUCTION AND REFLECT ALL AMEC ISSUED BULLETINS AND SKETCHES.

Issue	Date	Issue Description	By	Check
119	01	08/24/11	LAM	BHG
BULLETIN 107				
145	02	09/01/11	LAM	BHG
ISSUED FOR CONSTRUCTION				

Seal/Signature

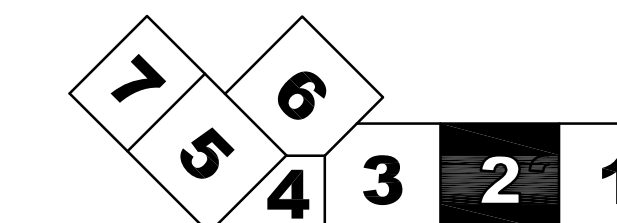


Project Name
PJM Terminal Enhancement 03-01-11

Project Number
03-0395-000
CAD File Name
C:\AMEC\330111\E04.03.02.dwg
Description
ELECTRICAL LIGHTING PLAN - LEVEL 3 - ZONE 2

Scale
1/8" = 1'-0"

KEY PLAN



E04.03.02

©2009 Gensler