

SHEET NOTES

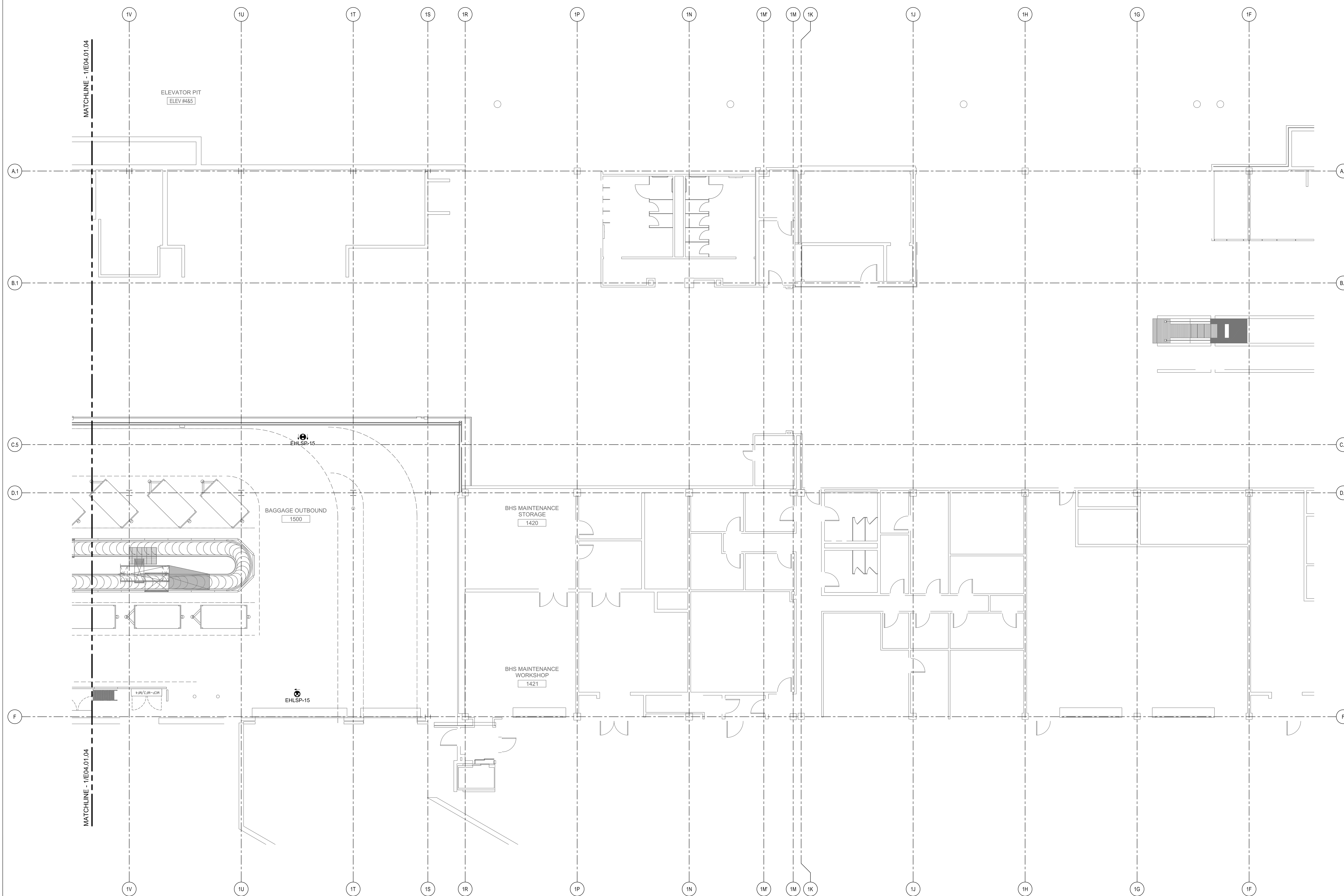
**Portland International
Jetport**

1001 Westbrook Street
Portland, Maine 04102

Gensler
2020 K Street, NW
Suite 200
Washington, DC 20006
Telephone 202.721.5200
Facsimile 202.872.8587

nest ASSOCIATES, INC.
343 Gorham Road, South Portland, ME 04106
P: (207) 761-1770 F: (207) 774-1246 www.nest.com
engineers - architects - surveyors - construction managers

amec
343 Gorham Road, South Portland ME 04106
P: (207) 761-1770 F: (207) 774-1246 www.amec.com



THESE DRAWINGS ARE ISSUED FOR CONSTRUCTION AND REFLECT ALL AMEC ISSUED BULLETINS AND SKETCHES.

Issue	Date & Issue Description	By	Check
01	12/03/08	LAM	BHG
02	01/23/09	LAM	BHG
03	10/26/09	LAM	BHG
04	11/02/09	LAM	BHG
02	05	LAM	BHG
03	06	LAM	BHG
16	07	LAM	BHG

GENERAL NOTES

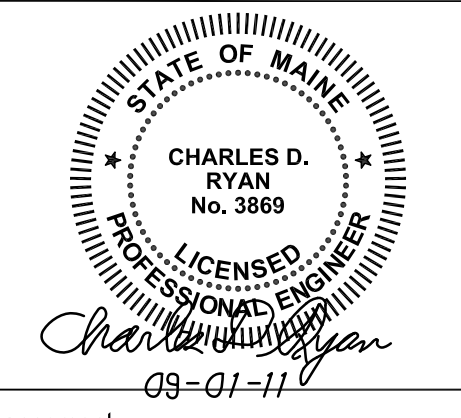
- A SEE SHEET E00.00 FOR LEGEND AND GENERAL NOTES.
- B CONTRACTOR SHALL COORDINATE MOUNTING HEIGHTS OF EXIT SIGNS OF THIS LEVEL WITH ARCHITECTURAL.

Project Name
PJM Terminal Enhancement

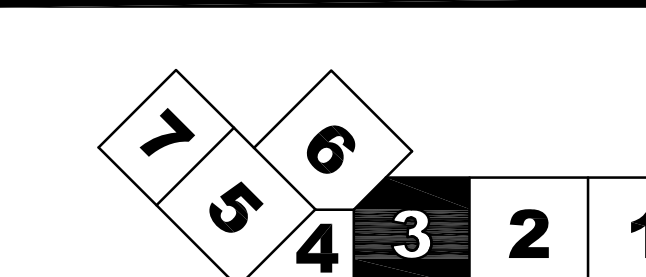
Project Number
09-0395-000

CAD File Name
C:\AMEC\33011E04.01.03.dwg

Description
ELECTRICAL LIGHTING PLAN - LEVEL 1 - ZONE 3



KEY PLAN



Scale
1/8" = 1'-0"



E04.01.03

©2009 Gensler