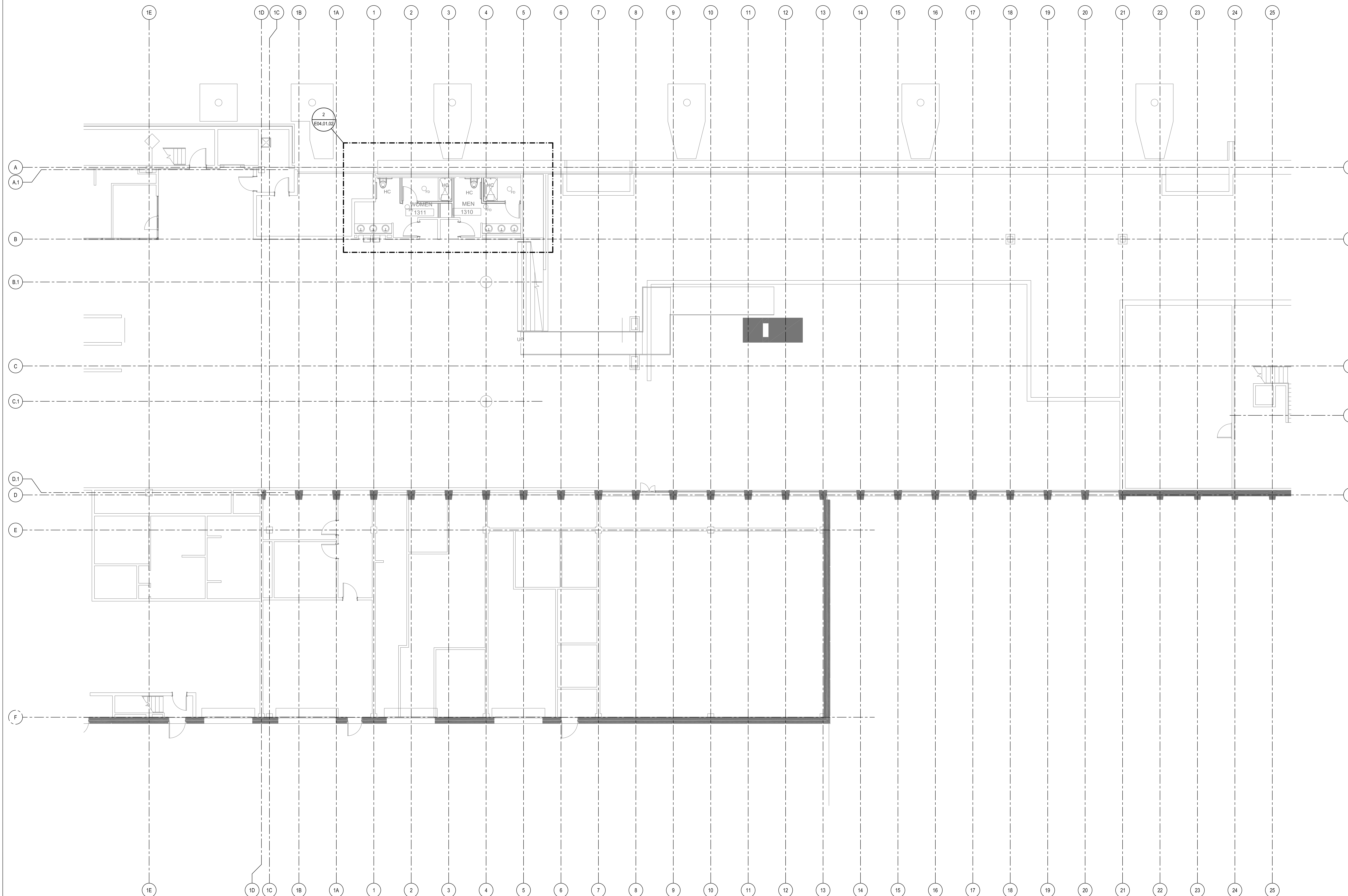


ELECTRICAL LIGHTING ENLARGED PLAN
SCALE: 1/8" = 1'-0" **2**



ELECTRICAL LIGHTING PLAN - LEVEL 1 - ZONE 2
SCALE: 1/8" = 1'-0" **1**

SHEET NOTES

- 01 RELOCATE FIXTURES. RECONNECT TO EXISTING NORMAL LIGHTING CIRCUIT IN THIS ROOM. CONTRACTOR SHALL VERIFY CIRCUIT CAPACITY PRIOR TO ANY WORK.
- 02 RELOCATED FIXTURE. RECONNECT TO EXISTING EMERGENCY LIGHTING CIRCUIT IN THIS ROOM. CONTRACTOR SHALL VERIFY CIRCUIT CAPACITY PRIOR TO ANY WORK.
- 03 CONNECT TO EXISTING EMERGENCY CIRCUIT IN THIS ROOM. CONTRACTOR SHALL VERIFY CIRCUIT CAPACITY PRIOR TO ANY WORK.

Portland International Jetport

1001 Westbrook Street
Portland, Maine 04102

Gensler

2020 K Street, NW
Suite 200
Washington, DC 20006
Telephone 202.721.5200
Facsimile 202.872.8587

oest ASSOCIATES, INC.
363 Gopham Road, South Portland, ME 04106 P: (207) 764-1770 F: (207) 774-1246 www.oest.com
engineers - architects - surveyors - construction managers

amec

343 Gorham Road, South Portland ME 04106
P: (207) 761-1770 F: (207) 774-1246 www.amec.com

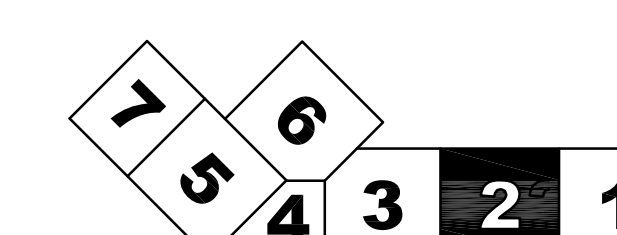
THESE DRAWINGS ARE ISSUED FOR CONSTRUCTION AND REFLECT ALL AMEC ISSUED BULLETINS AND SKETCHES.

Issue	Date	Issue Description	By	Check
109	01	07/15/11	CAP	PEB
BULLETIN 116				
145	02	09/01/11	LAM	BHG
ISSUED FOR CONSTRUCTION				

GENERAL NOTES

A SEE SHEET E00.00 FOR LEGEND AND GENERAL NOTES.

KEY PLAN



Scale: 1/8" = 1'-0"

E04.01.02

©2009 Gensler