

SHEET NOTES

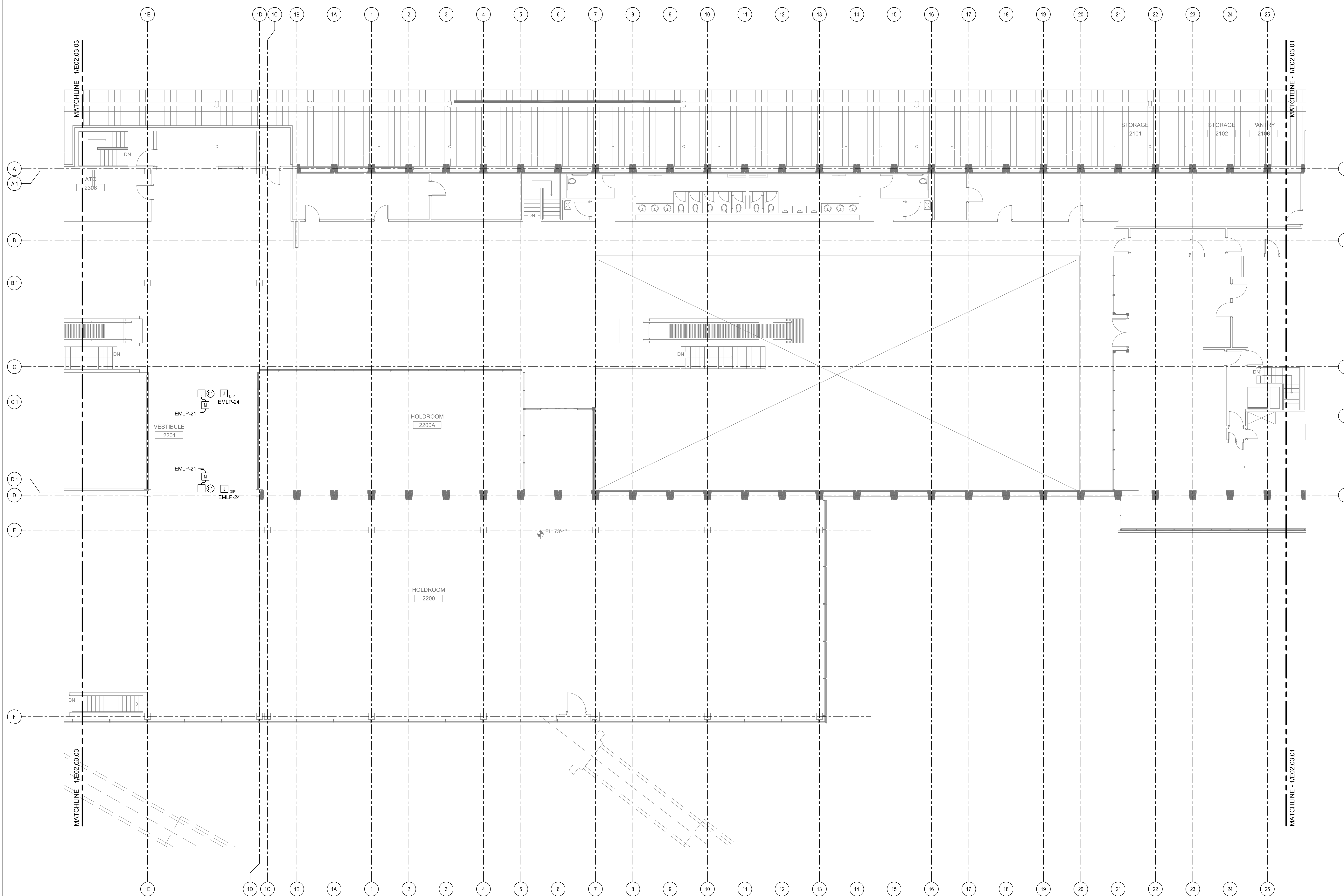
**Portland International
Jetport**

1001 Westbrook Street
Portland, Maine 04102

Gensler
2020 K Street, NW
Suite 200
Washington, DC 20006
Telephone 202.721.5200
Facsimile 202.872.8587

oest ASSOCIATES, INC.
363 Gopher Road, South Portland, ME 04106 P: (207) 761-1770 F: (207) 774-1246 www.oest.com
engineers - architects - surveyors - construction managers

amec
343 Gorham Road, South Portland ME 04106
P: (207) 761-1770 F: (207) 774-1246 www.amec.com



THESE DRAWINGS ARE ISSUED FOR CONSTRUCTION AND REFLECT ALL AMEC ISSUED BULLETINS AND SKETCHES.

Issue	Date & Issue Description	By	Check
01	12/10/10	LAM	BHG
10	08/24/11	LAM	BHG
16	03/01/11	LAM	BHG

GENERAL NOTES

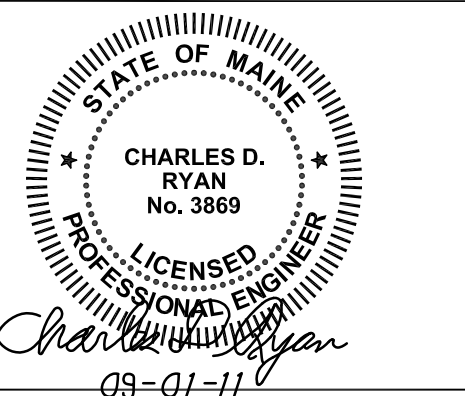
- A. SEE SHEET E00.00 FOR LEGEND AND GENERAL NOTES.
- B. CONTRACTOR SHALL VERIFY CIRCUITS WITHIN PANEL EMLP ARE AVAILABLE PRIOR TO ANY WORK. SHOULD CIRCUITS IDENTIFIED NOT BE AVAILABLE CONTACT ENGINEER FOR FURTHER INSTRUCTIONS.

Project Name
PJM Terminal Enhancement

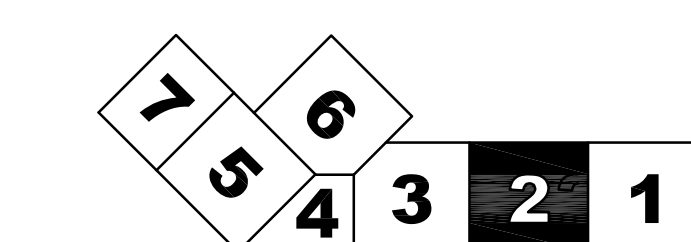
Project Number
09-0395-000

CAD File Name
C:\AMEC\330101\E02.03.02.dwg

Description
ELECTRICAL POWER PLAN - LEVEL 3 - ZONE 2



KEY PLAN



Scale
1/8" = 1'-0"

E02.03.02

©2009 Gensler