

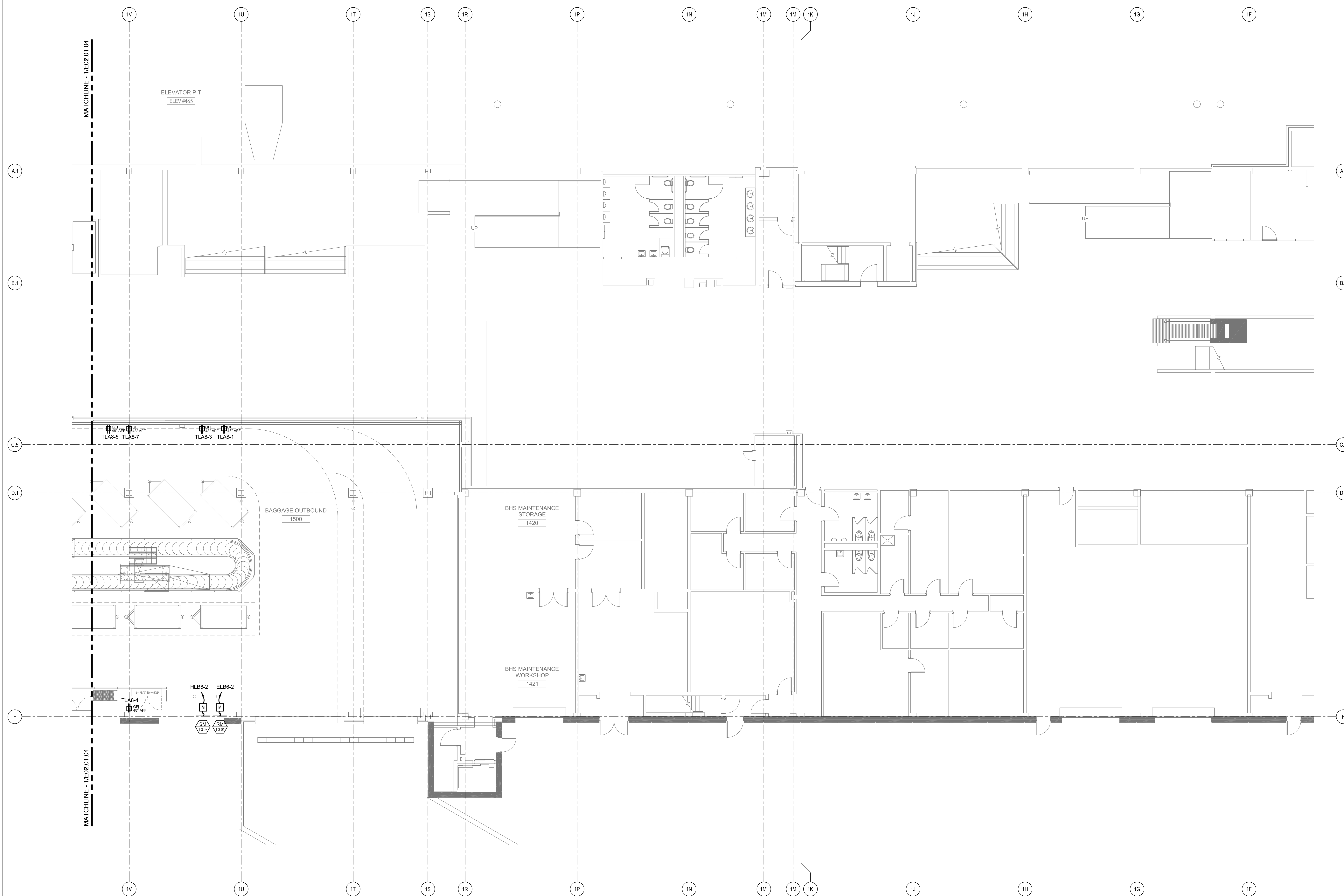
SHEET NOTES

Portland International
Jetport
1001 Westbrook Street
Portland, Maine 04102

Gensler
2020 K Street, NW
Suite 200
Washington, DC 20006
Telephone 202.771.5200
Facsimile 202.872.8587

nest ASSOCIATES, INC.
361 Gopher Road, South Portland, ME 04106 P: (207) 764-9799 F: (207) 774-5246 www.nest.com
engineers - architects - surveyors - construction managers

amec
343 Gorham Road, South Portland ME 04106
P: (207) 761-1770 F: (207) 774-1246 www.amec.com



THESE DRAWINGS ARE ISSUED FOR CONSTRUCTION AND REFLECT ALL AMEC ISSUED BULLETINS AND SKETCHES.

Issue	Date & Issue Description	By	Check
01	07/15/09	LAM	BHG
02	TSA 30% SUBMISSION	LAM	BHG
	TSA 70% SUBMISSION	LAM	BHG
03	11/12/09	LAM	BHG
	TSA 100% SUBMISSION	LAM	BHG
04	09/01/11	LAM	BHG

ISSUED FOR CONSTRUCTION

GENERAL NOTES

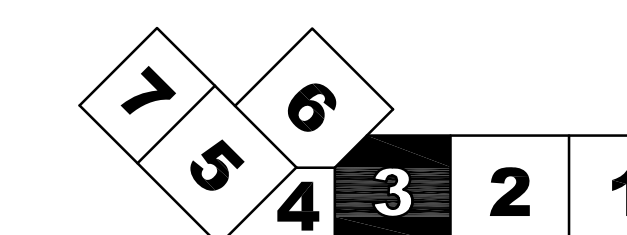
- A SEE SHEET E00.00 FOR LEGEND AND GENERAL NOTES.
- B CONTRACTOR SHALL REFER TO FIRE ALARM, SECURITY, IT, AND PUBLIC ADDRESS SYSTEMS DRAWINGS FOR CONDUITS & WIRING REQUIREMENTS.

Seed/Signature

 Project Name
PJM Terminal Enhancement

Project Number
03-0395-000
 CAD File Name
C:\AMEC\330101\E02.01_03.dwg
 Description
ELECTRICAL POWER PLAN - LEVEL 1 - ZONE 3

KEY PLAN



Scale
1/8" = 1'-0"



E02.01.03

©2009 Gensler