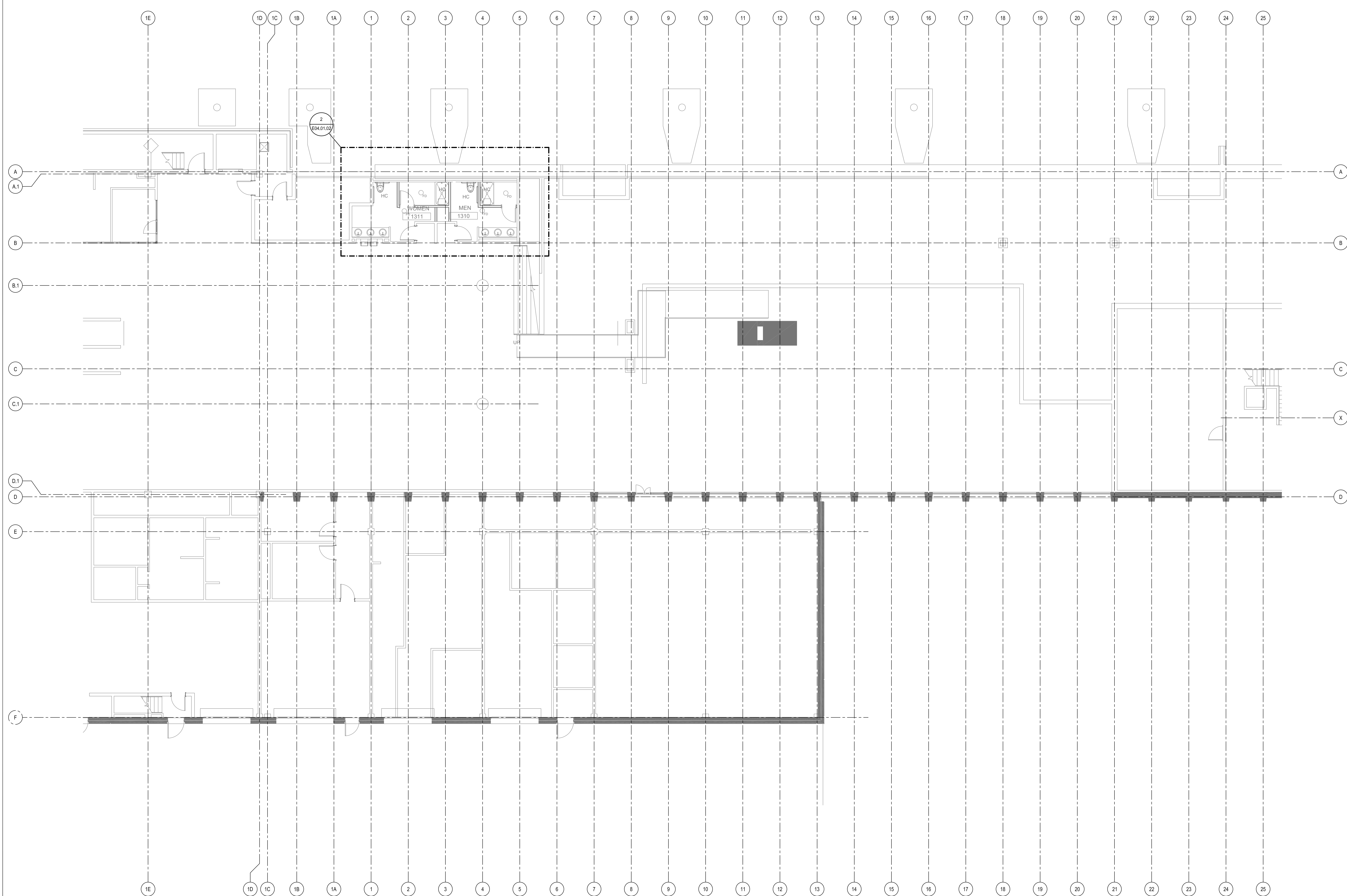


ELECTRICAL POWER ENLARGED PLAN
SCALE: 1/4" = 1'-0" **2**



ELECTRICAL POWER PLAN - LEVEL 1 - ZONE 2
SCALE: 1/8" = 1'-0" **1**

SHEET NOTES

- 01 RECONNECT POWER TO RELOCATED CABINET UNIT HEATERS. EXTEND CONDUIT AND WIRE AS NECESSARY
- 02 PROVIDE RECEPTACLES IN WALL CAVITY FOR CONNECTION TO AUTOMATIC FLUSH VALVE TRANSFORMER. REUSE EXISTING FLUSH VALVE CIRCUIT AND EXTEND CONDUIT AND WIRE AS NECESSARY.
- 03 CONTRACTOR SHALL VERIFY CIRCUITS IN PANEL EMLP ARE AVAILABLE AND HAVE CAPACITY PRIOR TO ANY WORK. PANEL EMLP IS LOCATED ON THIS LEVEL. COORDINATE EXACT LOCATION WITH JETPORT PERSONNEL

Portland International Jetport
1001 Westbrook Street
Portland, Maine 04102

Gensler
2020 K Street, NW
Suite 200
Washington, DC 20006
Telephone 202.721.5200
Facsimile 202.872.8587

nest ASSOCIATES, INC.
363 Gopher Road, South Portland, ME 04106
P: (207) 764-1770 F: (207) 774-1246 www.nest.com
engineers - architects - surveyors - construction managers

amec
343 Gorham Road, South Portland ME 04106
P: (207) 761-1770 F: (207) 774-1246 www.amec.com

THESE DRAWINGS ARE ISSUED FOR CONSTRUCTION AND REFLECT ALL AMEC ISSUED BULLETINS AND SKETCHES.

Issue	Date	Issue Description	By	Check
129	01	07/15/11	CAP	PEB
BULLETIN 116				
145	02	09/01/11	LAM	BHG
ISSUED FOR CONSTRUCTION				

GENERAL NOTES

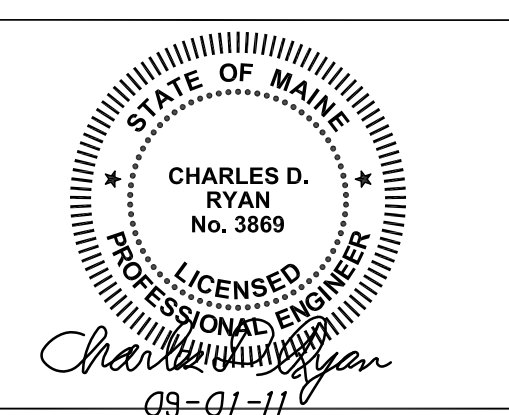
- A SEE SHEET E00.00 FOR LEGEND AND GENERAL NOTES.

Project Name
PJM Terminal Enhancement

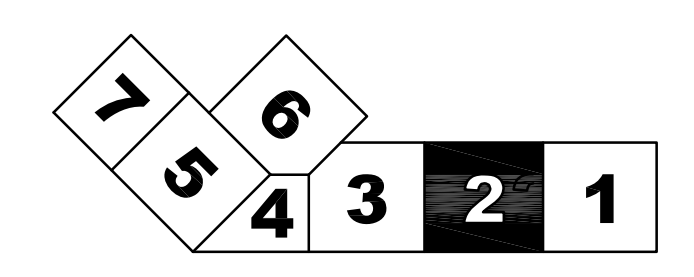
Project Number
09-0395-000

CAD File Name
C:\AMEC\330101\E02.01.02.dwg

Description
ELECTRICAL POWER PLAN - LEVEL 1 - ZONE 2



KEY PLAN



Scale
1/8" = 1'-0"

E02.01.02

©2009 Gensler