

Portland International Jetport

1001 Westbrook Street
Portland, Maine 04102

Gensler

oest ASSOCIATES, INC.
engineers - architects - surveyors - construction managers

amec

343 Gorham Road, South Portland ME 04106
P: (207) 761-1770 F: (207) 774-1246 www.amec.com

2020 K Street, NW
Suite 200
Washington, DC 20006
Telephone 202.721.5200
Facsimile 202.872.8587

SHEET NOTES

- 01 REMOVE MANUAL MOTOR STARTER AS WELL AS CONDUIT & WIRE BACK TO SOURCE FOR BAGGAGE BELT SECURITY DOOR MOTOR.
- 02 REMOVE MANUAL MOTOR STARTER AS WELL AS CONDUIT & WIRE BACK TO SOURCE FOR BAGGAGE BELT MOTOR WHICH IS MOUNTED TO FLOOR.
- 03 REMOVE MOTOR CONTROL PANEL AND ALL ASSOCIATED CONDUIT & WIRE.
- 04 REMOVE DISCONNECTS, STARTER, CONDUIT & WIRES FROM OVERHEAD DOOR MOTOR BACK TO SOURCE.
- 05 REMOVE PUSH BUTTON CONTROL FOR OVERHEAD DOOR. CONDUIT & WIRES SHALL BE REMOVED BACK TO SOURCE.
- 06 REMOVE DISCONNECT AND STARTER AS WELL AS CONDUIT AND WIRE BACK TO SOURCE FOR OVERHEAD MECHANICAL UNIT.
- 07 TWO 30 KVA TRANSFORMERS STACKED ON TOP OF EACH OTHER. TOP TRANSFORMER TO BE RELOCATED. BOTTOM TRANSFORMER TO BE DEMOLISHED. SEE POWER PLAN E02.02.03 FOR NEW LOCATION OF RELOCATED TRANSFORMER.
- 08 APPROXIMATE LOCATION OF UNDERGROUND FEEDER TO JET BRIDGE DISCONNECT.
- 09 APPROXIMATE LOCATION OF UNDERGROUND FEEDER FOR EXTERIOR LIGHTS. CONTRACTOR SHALL RELOCATE THIS FEEDER DEEPER TO REMAIN UNDER NEW FLOOR ELEVATION.
- 10 400 AMP, 480V FEEDER TO US AIR PANEL SHALL BE EXTENDED UNDERGROUND TO NEW 400 AMP JET BRIDGE DISCONNECT. SEE POWER PLANS FOR NEW LOCATION OF JET BRIDGE DISCONNECT.
- 11 OVERHEAD FEEDER TO TSA 480V PANEL. FEEDER SHALL BE RELOCATED AS HIGH AS POSSIBLE AND COORDINATED WITH BAGGAGE HANDLING EQUIPMENT. FEEDER SHALL BE RUN TO NEW LOCATION OF TSA 480V PANEL SHOWN ON SHEET E02.02.03.
- 12 PANELS AND ALL CIRCUITS TO BE RELOCATED. SEE POWER PLAN E02.02.03 FOR NEW LOCATIONS.
- 13 ALL EXISTING OVERHEAD CONDUITS IN THIS AREA SHALL BE TRACED AND IF DEEMED NECESSARY TO REMAIN SHALL BE RELOCATED AS HIGH AS POSSIBLE. ROUTING SHALL BE COORDINATED WITH NEW BAGGAGE HANDLING SYSTEM. SEE BAGGAGE HANDLING DRAWINGS FOR LOCATION OF EQUIPMENT. EXTEND CONDUIT & CONDUCTORS AS NECESSARY.
- 14 APPROXIMATE LOCATION OF OLD DELTA 4" TEL CONDUIT. CONTRACTOR SHALL RELOCATE AS NECESSARY TO ACCOMMODATE NEW FLOOR ELEVATION.

GENERAL NOTES

- A. SEE SHEET E00.00 FOR LEGEND AND GENERAL NOTES.
- B. ALL DEVICES BEING REMOVED SHALL HAVE ALL ASSOCIATED CONDUIT & WIRING REMOVED BACK TO SOURCE.

THESE DRAWINGS ARE ISSUED FOR CONSTRUCTION AND REFLECT ALL AMEC ISSUED BULLETINS AND SKETCHES.

| Issue | Date & Issue Description | By | Check |
|-------|--------------------------|-----|-------|
| 01 | 12/03/06 | LAM | BHG |
| 02 | 01/23/09 | LAM | BHG |
| 03 | 10/26/09 | LAM | BHG |
| 04 | 11/02/09 | LAM | BHG |
| 05 | 01/15/10 | PWZ | BHG |
| 06 | 09/01/11 | LAM | BHG |

| ADJUDICUM #1 | BULLETIN #3 |
|-------------------|-------------------------|
| ISSUED FOR PERMIT | ISSUED FOR CONSTRUCTION |

Project Name
PJM Terminal Enhancement

Project Number
03-0395-000

CAD File Name
C:\AMEC\0330101\E01.02.03.dwg

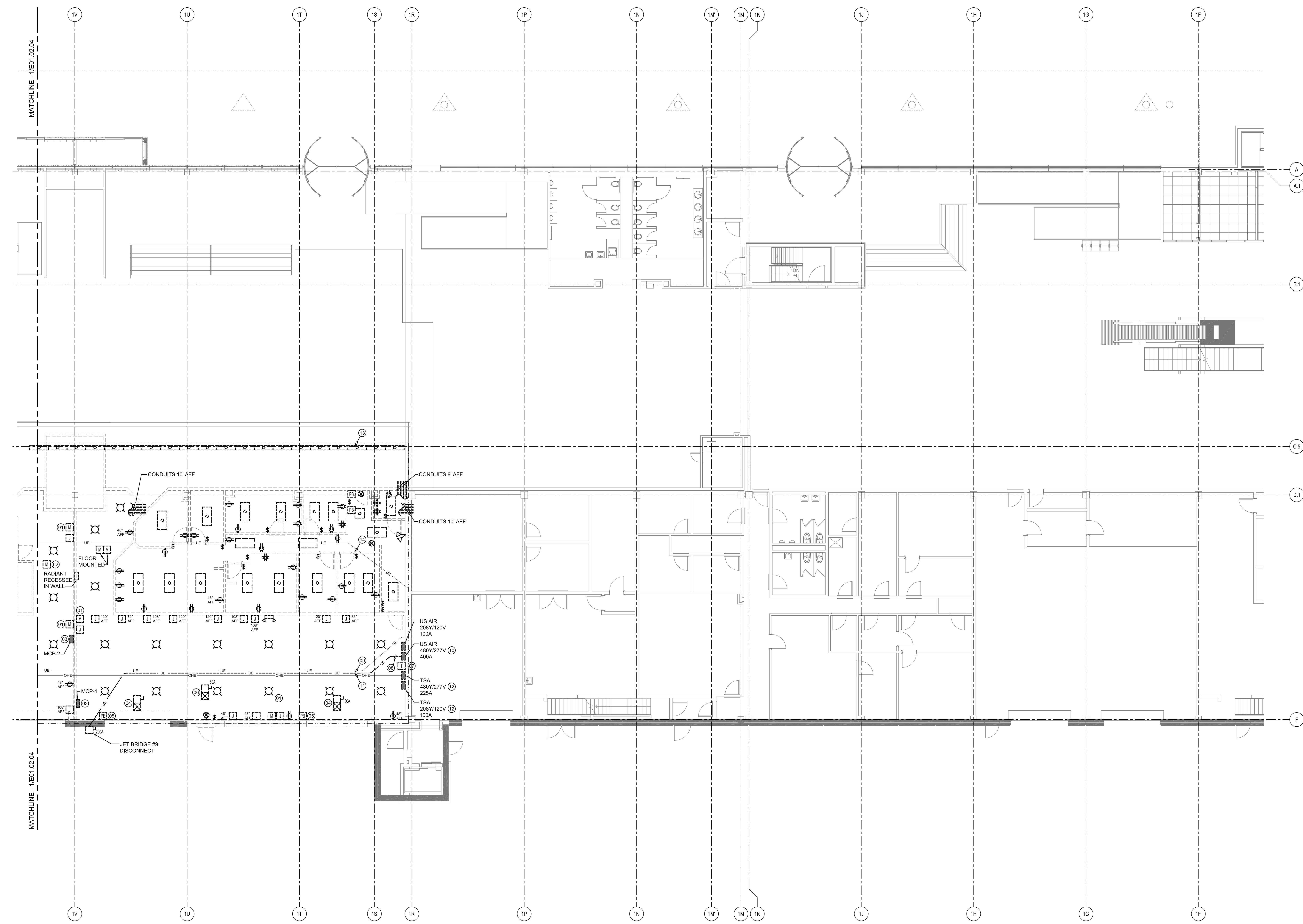
Description
ELECTRICAL DEMOLITION PLAN - LEVEL 2 - ZONE 3

Scale
1/8" = 1'-0"

Ref. North

E01.02.03

©2009 Gensler



ELECTRICAL DEMOLITION PLAN - LEVEL 2 - ZONE 3

SCALE: 1/8" = 1'-0"