

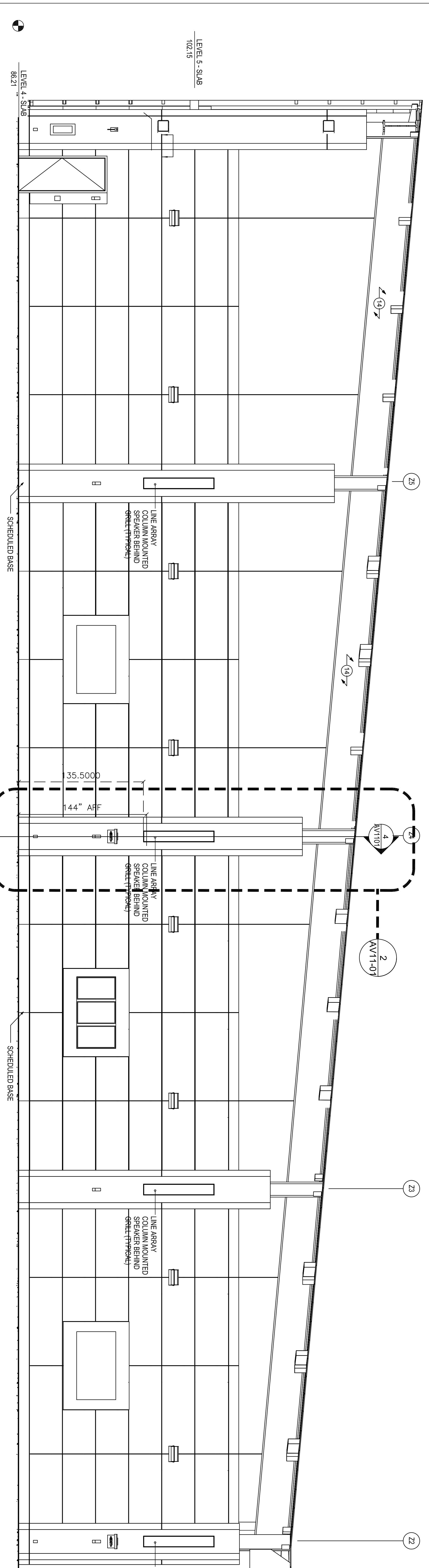
SHEET NOTES

Portland International Jetport
 100 Westbrook Street
 Portland, Maine 04102

Gensler

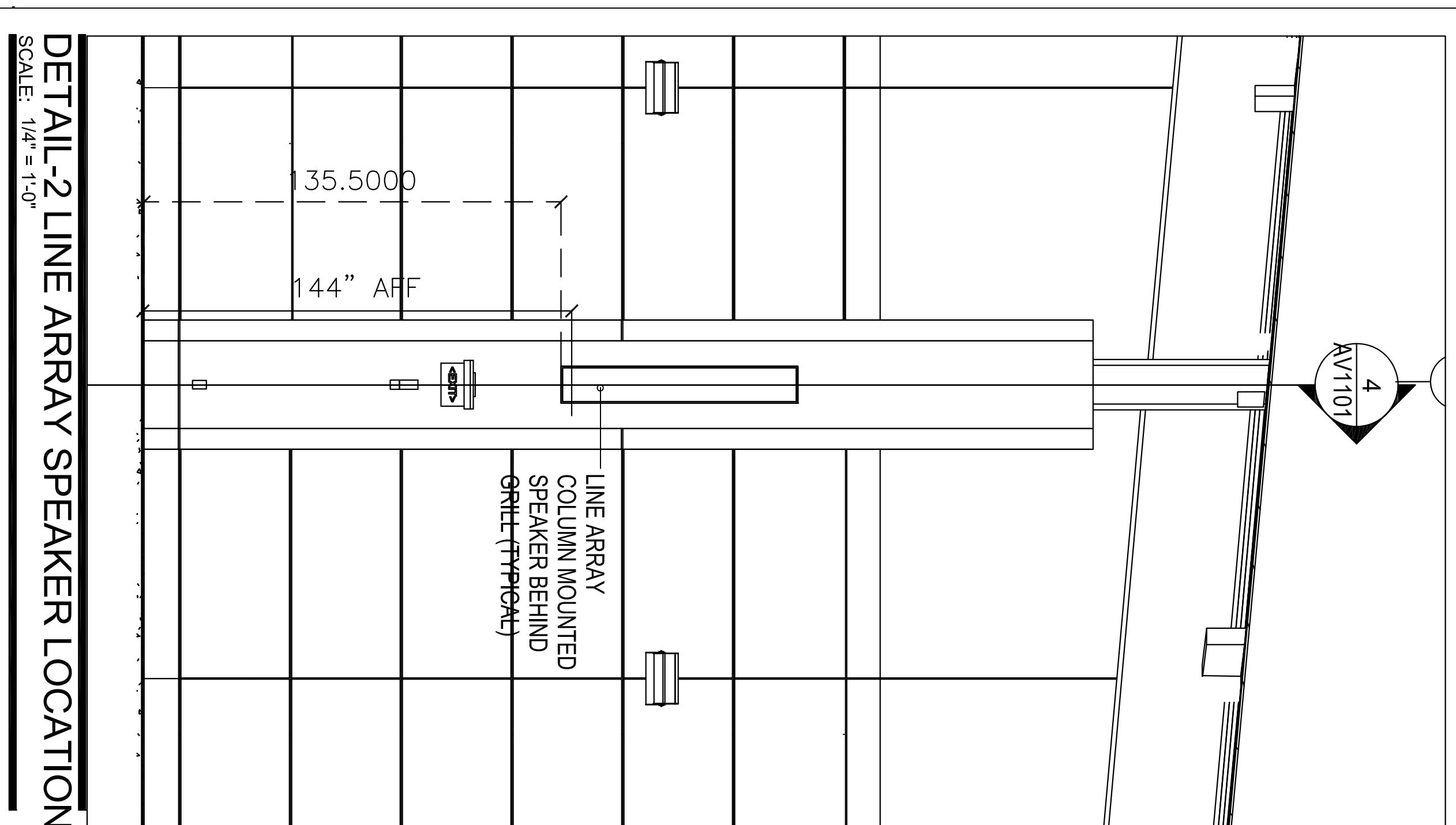
2020 K Street, Northwest
 Suite 200 DC 20006
 Washington, DC 20242
 Telephone: 202.872.8587
 Facsimile: 202.872.8587

3300 N. Fairfax Drive
 Suite 302
 Arlington, Virginia 22201
 Telephone: 703.248.5900
 Fax: 703.248.5904
 www.smw.com
SM&W
SHEN MILSON WILKE



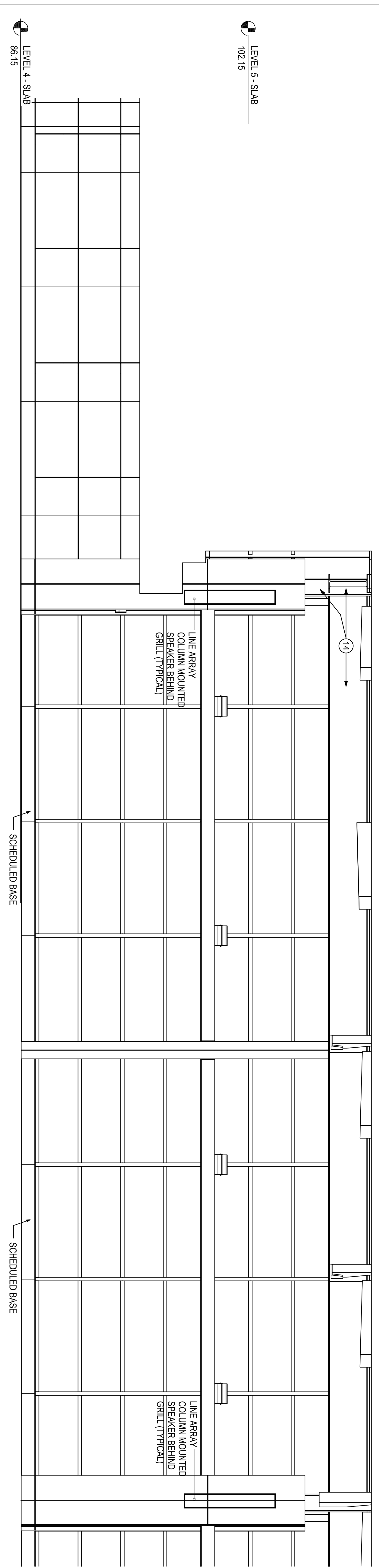
DETAIL -1 SECURITY SCREENING LEVEL - NORTH - LINE ARRAY SPEAKER LOCATIONS

SCALE: 1/4" = 1'-0"



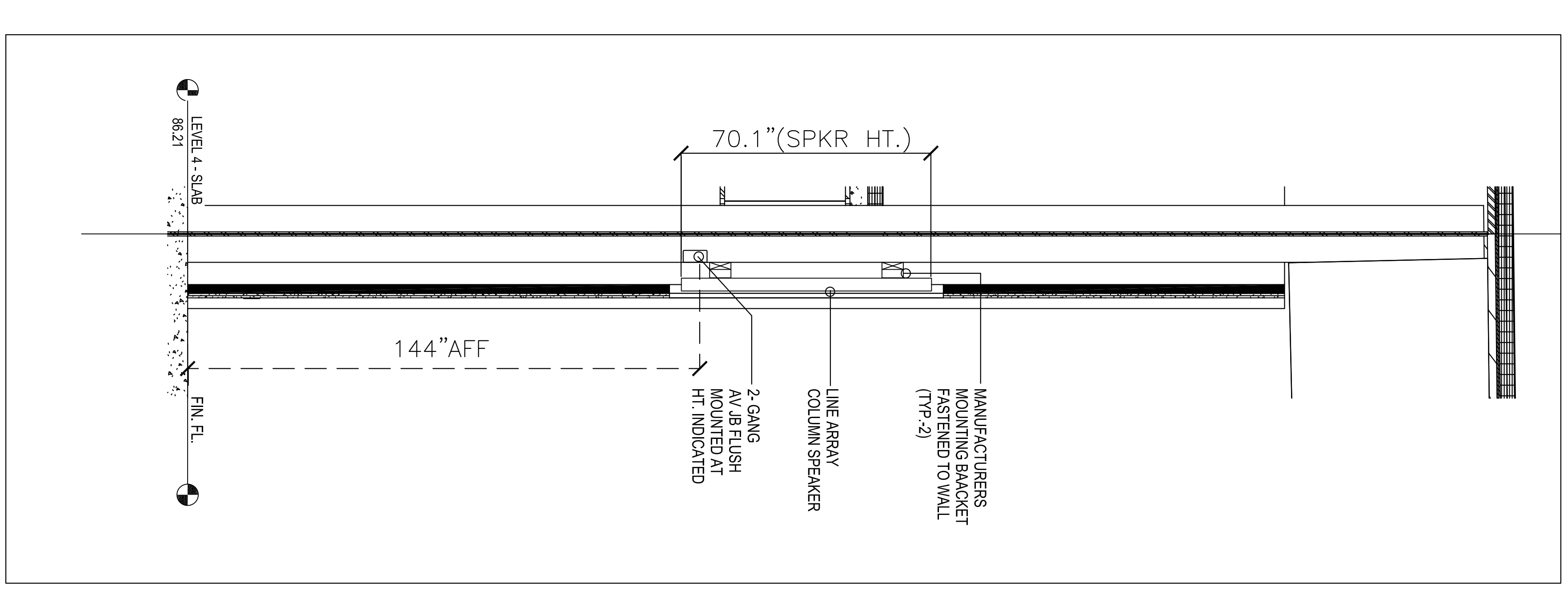
DETAIL -2 LINE ARRAY SPEAKER LOCATION

SCALE: 1/4" = 1'-0"



DETAIL -3 SECURITY SCREENING LEVEL - EAST - LINE ARRAY SPEAKER LOCATIONS

SCALE: 1/4" = 1'-0"



DETAIL -4 SPEAKER AND JB MOUNTING DETAIL

SCALE: 1/4" = 1'-0"

KEY PLAN

Issue	Date & Issue Description	By	Check
1	1/25/2008 CONSTRUCTION DOCUMENTS		
2	1/23/08 PROGRESS ISSUE		
3	01/22/08 95% CONSTRUCTION DOCUMENTS		
4	10/20/09 PROGRESS ISSUE		
5	ISSUED FOR PERMIT		
145	08/17/2011 ISSUED FOR CONSTRUCTION		

_____ Signature
_____ Title
_____ Date

Project Name PVI/T TERMINAL EXPANSION
Project Number _____ CAD File Name _____ Description AUDIOVISUAL ELEVATIONS - LEVEL 4
Scale As Indicated

AV11.01
 ©2008 Gensler