

SHEET NOTES

**Portland International
Jetport**
1001 Westbrook Street
Portland, Maine 04102

Gensler
2020 K Street, Northwest
Suite 200, DC 20006
Washington, DC 20004
Tel: 202.872.8800
Fax: 202.872.8897

SM&W
3300 N. Fairfax Drive
Suite 302
Arlington, Virginia 22201
Tel: 703.246.8304
Fax: 703.246.8304
www.smwinc.com

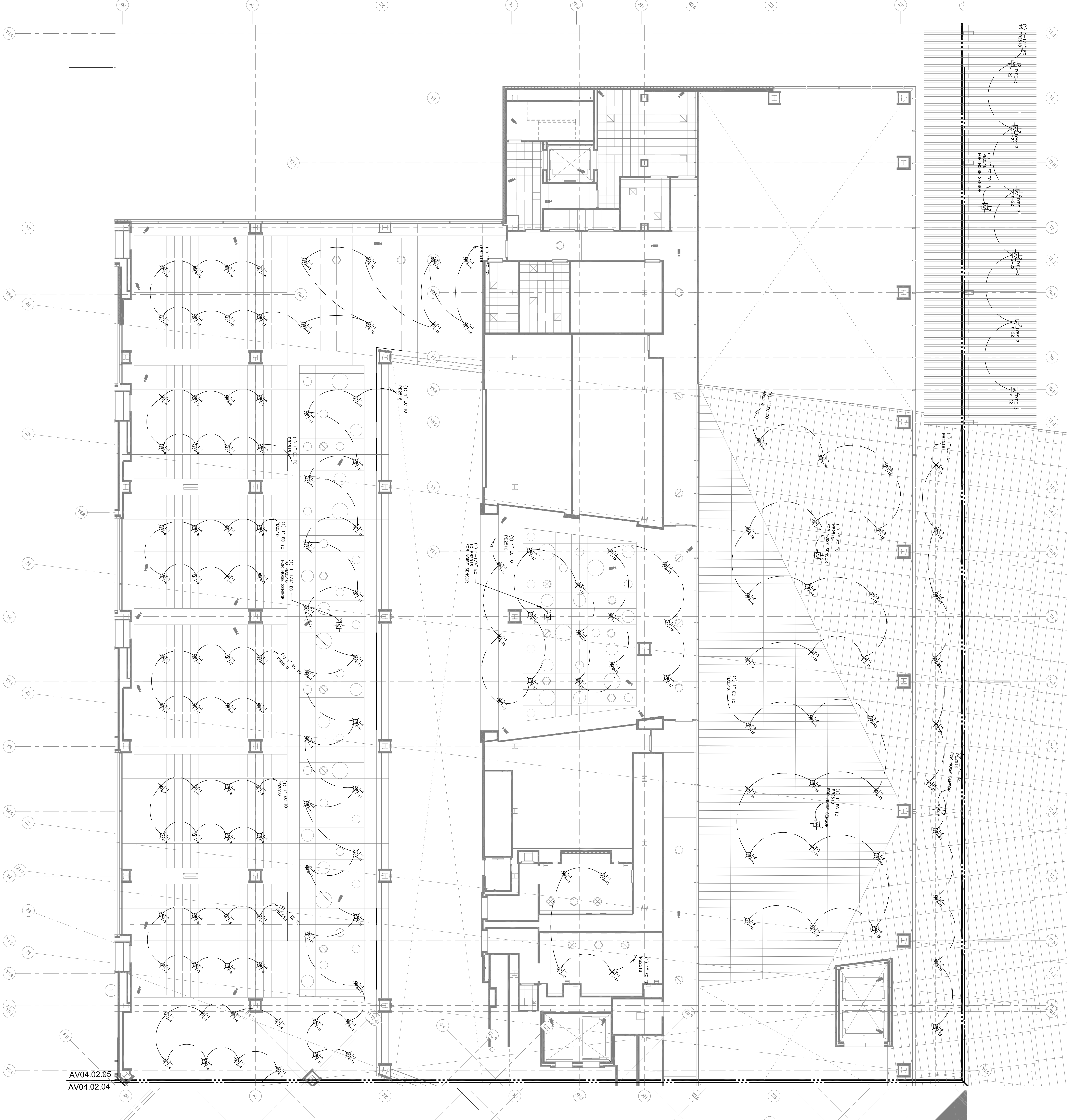
SHEN MILSON WILKE

Issue	Date & Issue Description	By	Checked
1	12/20/05 CONSTRUCTION DOCUMENTS		
2	12/20/05 PROGRESS ISSUE		
3	01/22/06 95% CONSTRUCTION DOCUMENTS		
4	10/20/06 PROGRESS ISSUE		
5	08/17/07 ISSUED FOR PERMIT		
145	6 08/17/07 ISSUED FOR CONSTRUCTION		

Project Name	PVI TERMINAL EXPANSION
Project Number	
CAO File Name	
Description	AUDITORIUM FACILITY RCP - LEVEL 3 - ZONE 5
Scale	As Indicated

AV04.03.05

©2006 Gensler



LEVEL 3 - ZONE 5
1/8" = 1'-0"

KEY PLAN

