

SHEET NOTES

**Portland International
Jetport**
1001 Westbrook Street
Portland, Maine 04102

Gensler
2020 K Street, Northwest
Suite 200 DC - 20006
Washington DC 20004
Tel: 202.771.1000
Fax: 202.872.5597

SM&W
3300 N. Fallow Drive
Suite 302
Arlington, Virginia 22201
Tel: 703.246.5904
Fax: 703.246.5904
www.smwinc.com

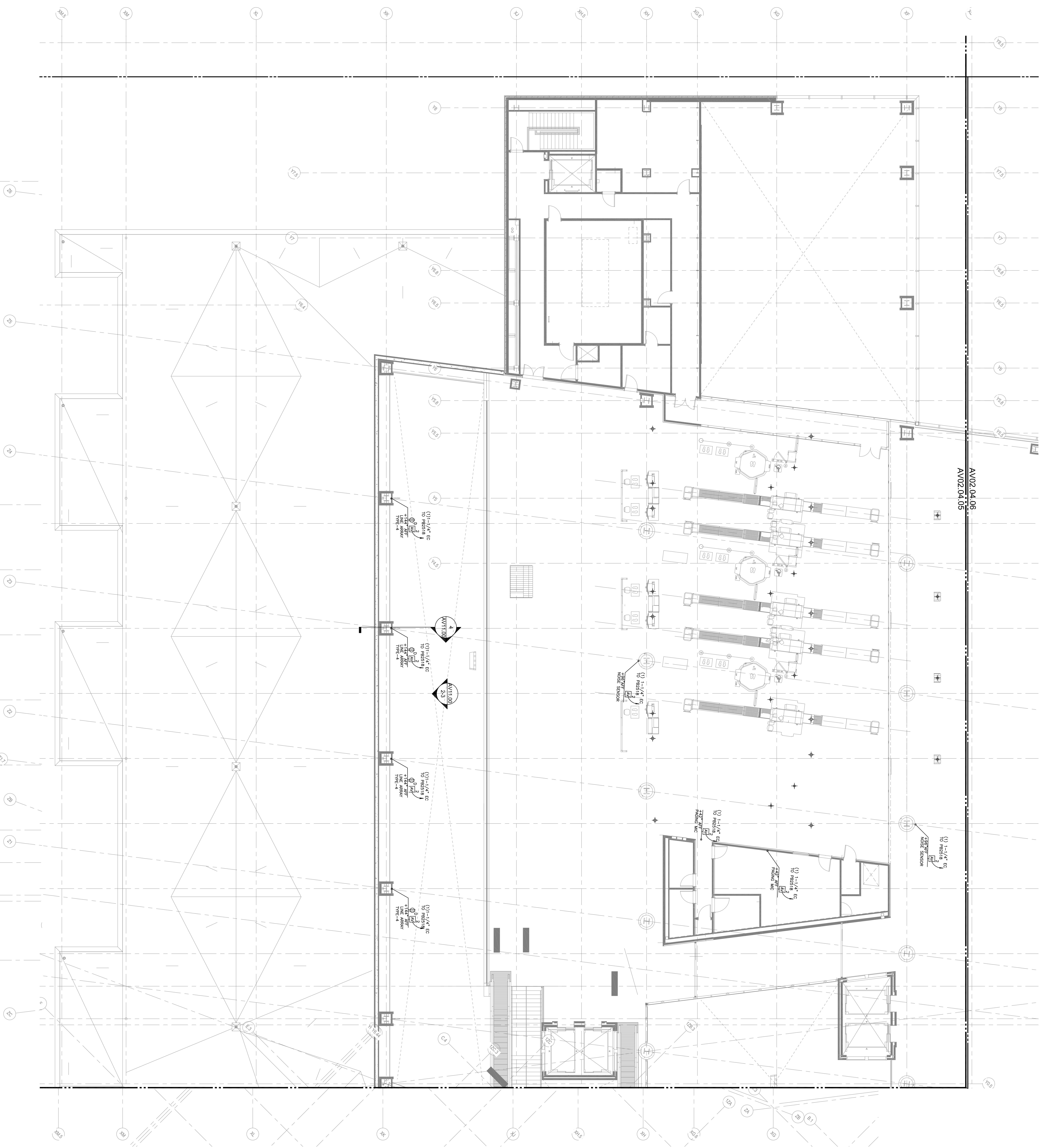
SHEN MILSON WILKE

Issue	Date & Issue Description	By	Checked
1	12/20/05 ISSUE FOR CONSTRUCTION DOCUMENTS		
2	12/20/05 PROGRESS ISSUE		
3	01/23/06 95% CONSTRUCTION DOCUMENTS		
4	10/20/06 PROGRESS ISSUE		
5	ISSUED FOR PERMIT		
145	6/08/17/011 ISSUED FOR CONSTRUCTION		

Project Name: PVI/T TERMINAL EXPANSION
Project Number:
CD No. Rev. Name:
Description: ADDITIONAL FACILITY PLAN - LEVEL 4 - ZONE 5
Scale: As Indicated

AV02.04.05

©2006 Gensler



LEVEL 4 - ZONE 5
1/8" = 1'-0"

KEY PLAN

