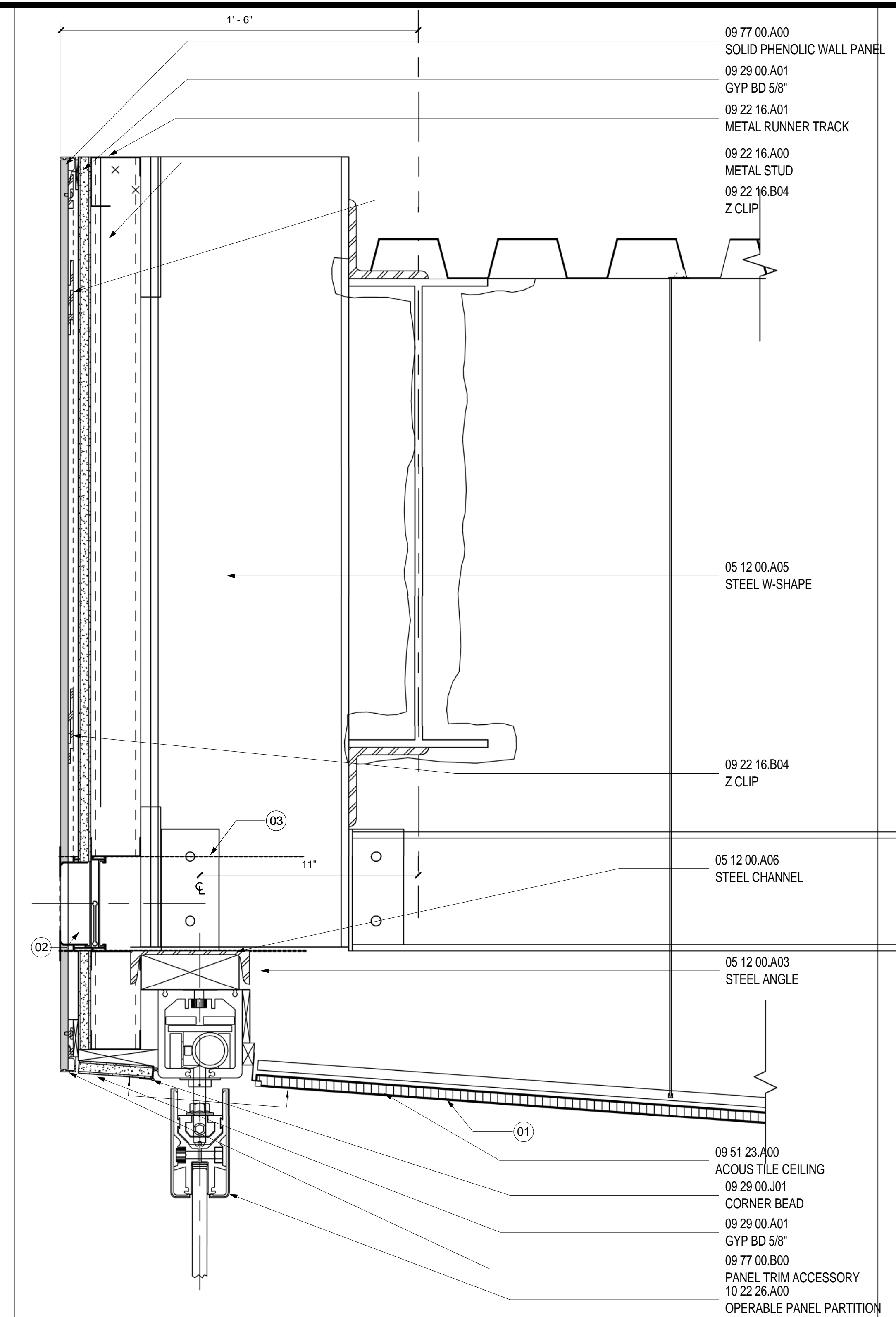
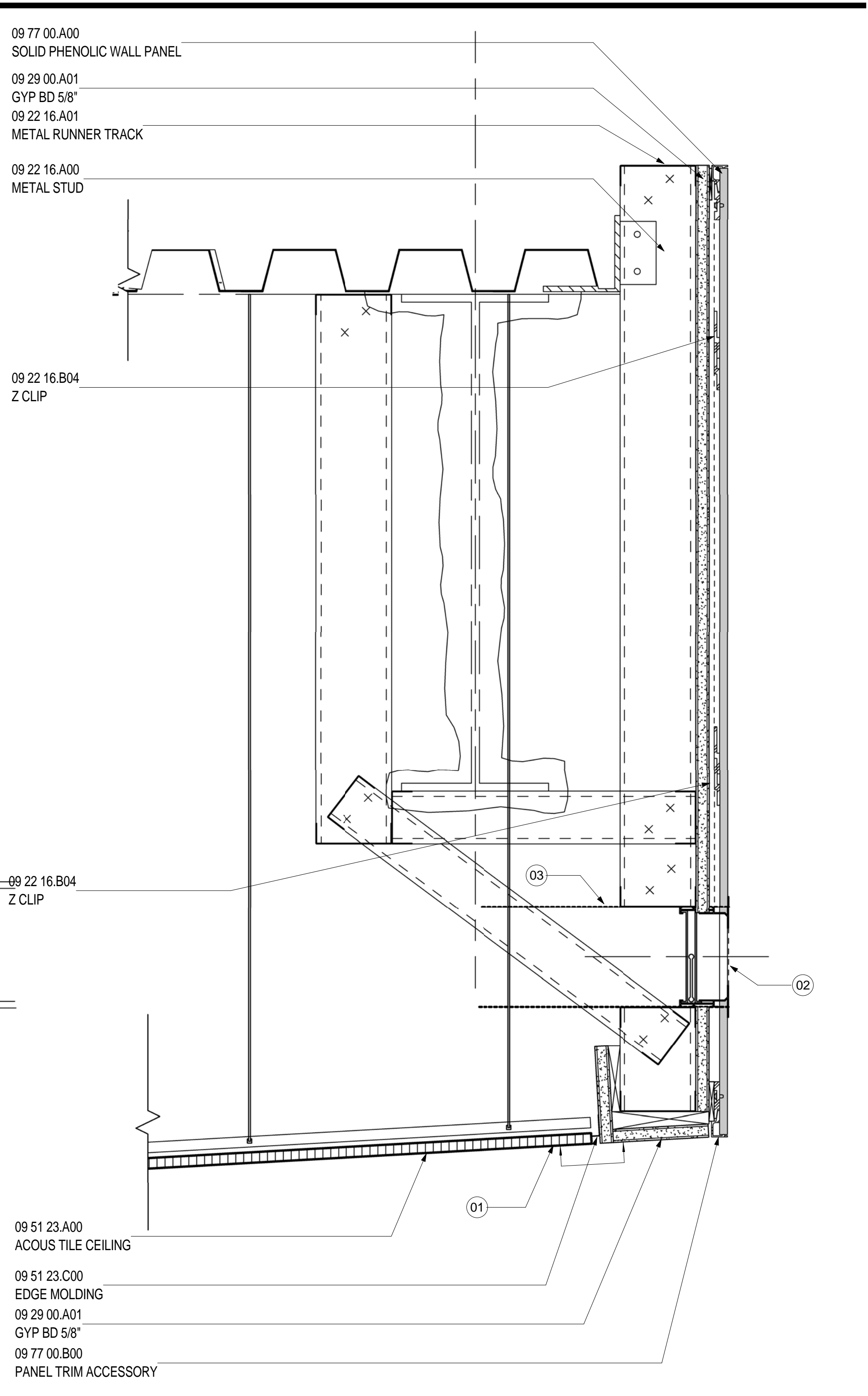


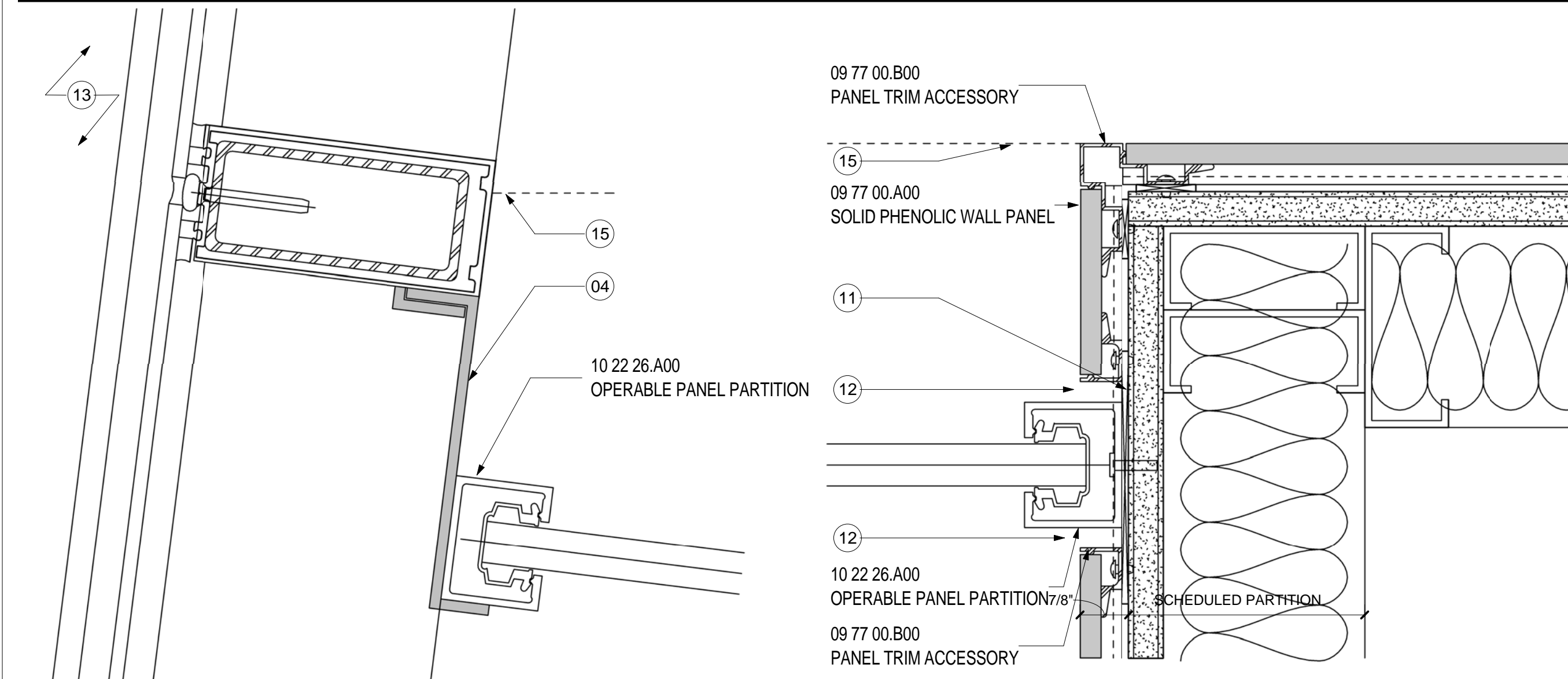
**OPERABLE PANEL POCKET AT SSCP CEILING**  
SCALE: 3" = 1'-0"  
A04.04.05



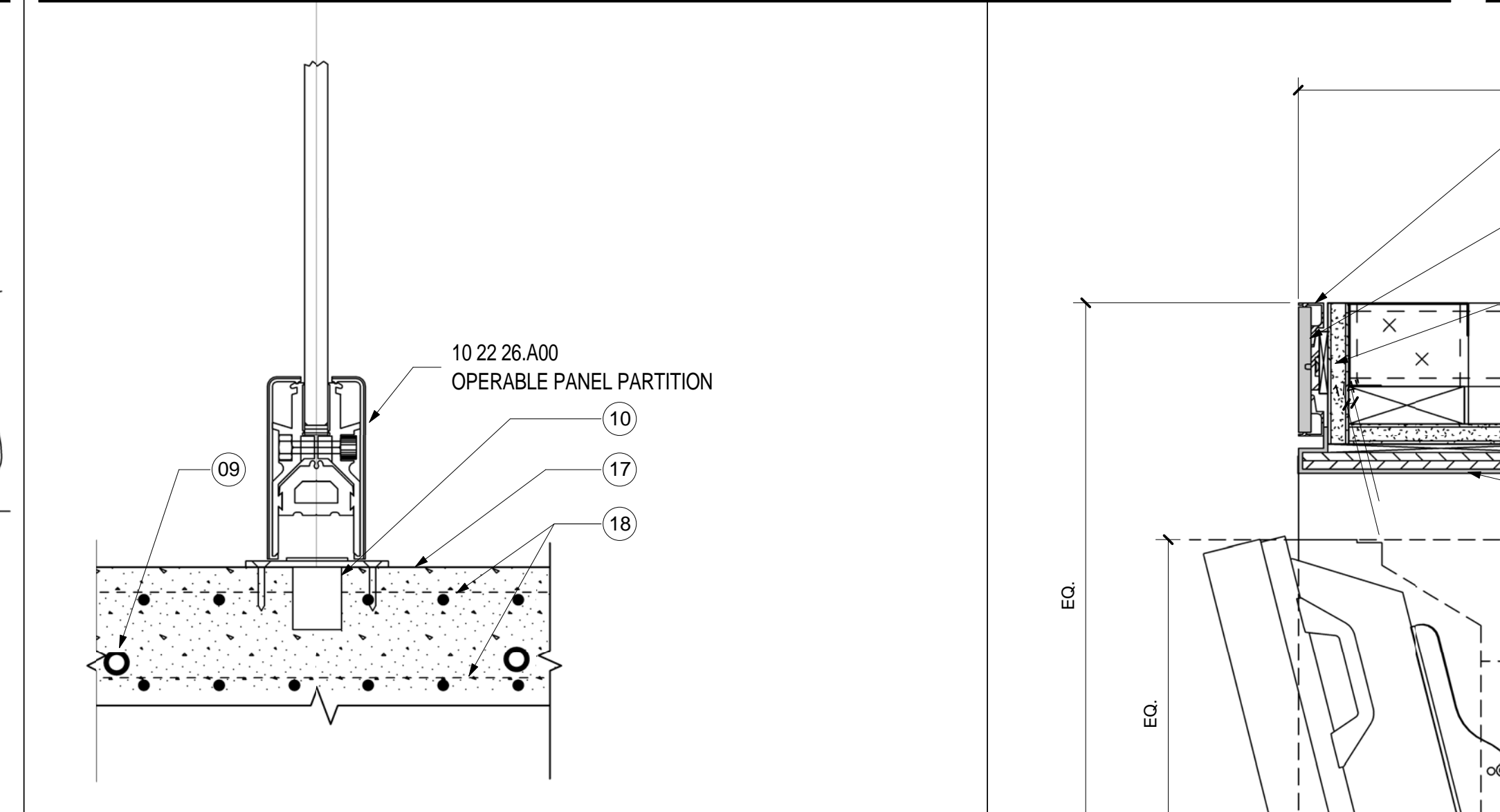
**ACT TO GYP TRANSITION PRE SSCP**  
SCALE: 3" = 1'-0"  
A04.04.05



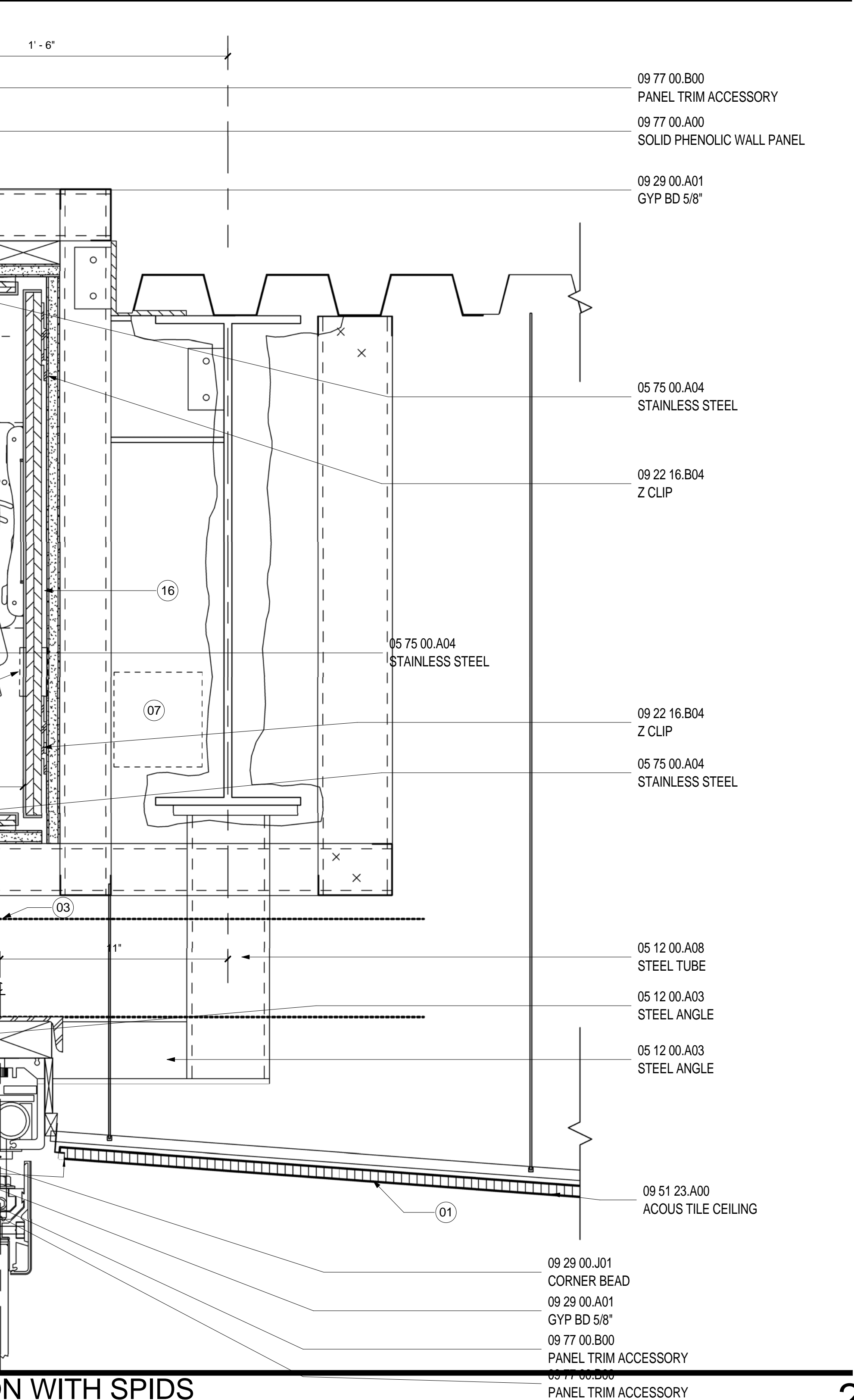
**ACT TO GYP TRANSITION POST SSCP**  
SCALE: 3" = 1'-0"  
A04.04.05



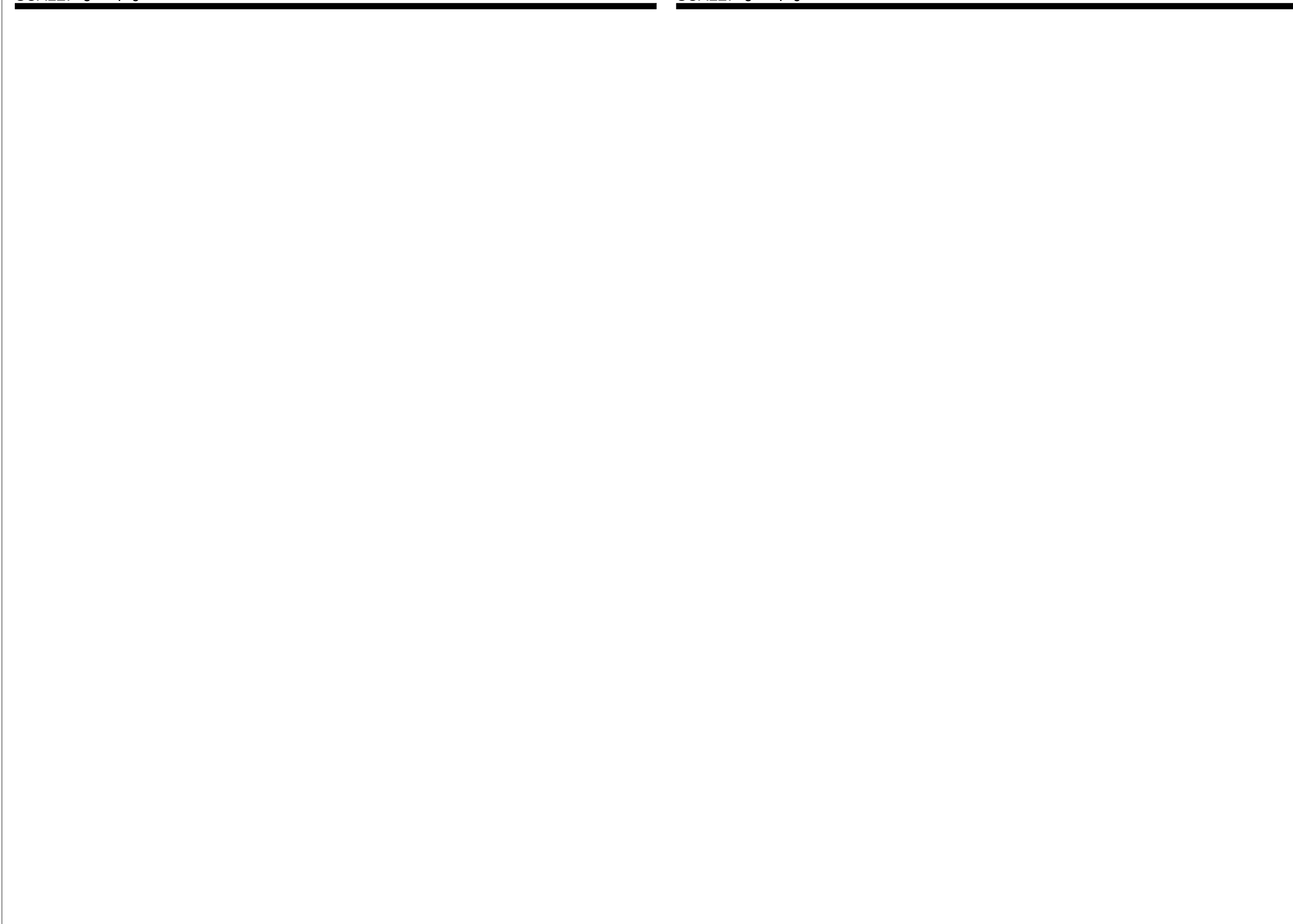
**OPERABLE PANEL JAMB AT GLASS**  
SCALE: 6" = 1'-0"  
A11.24



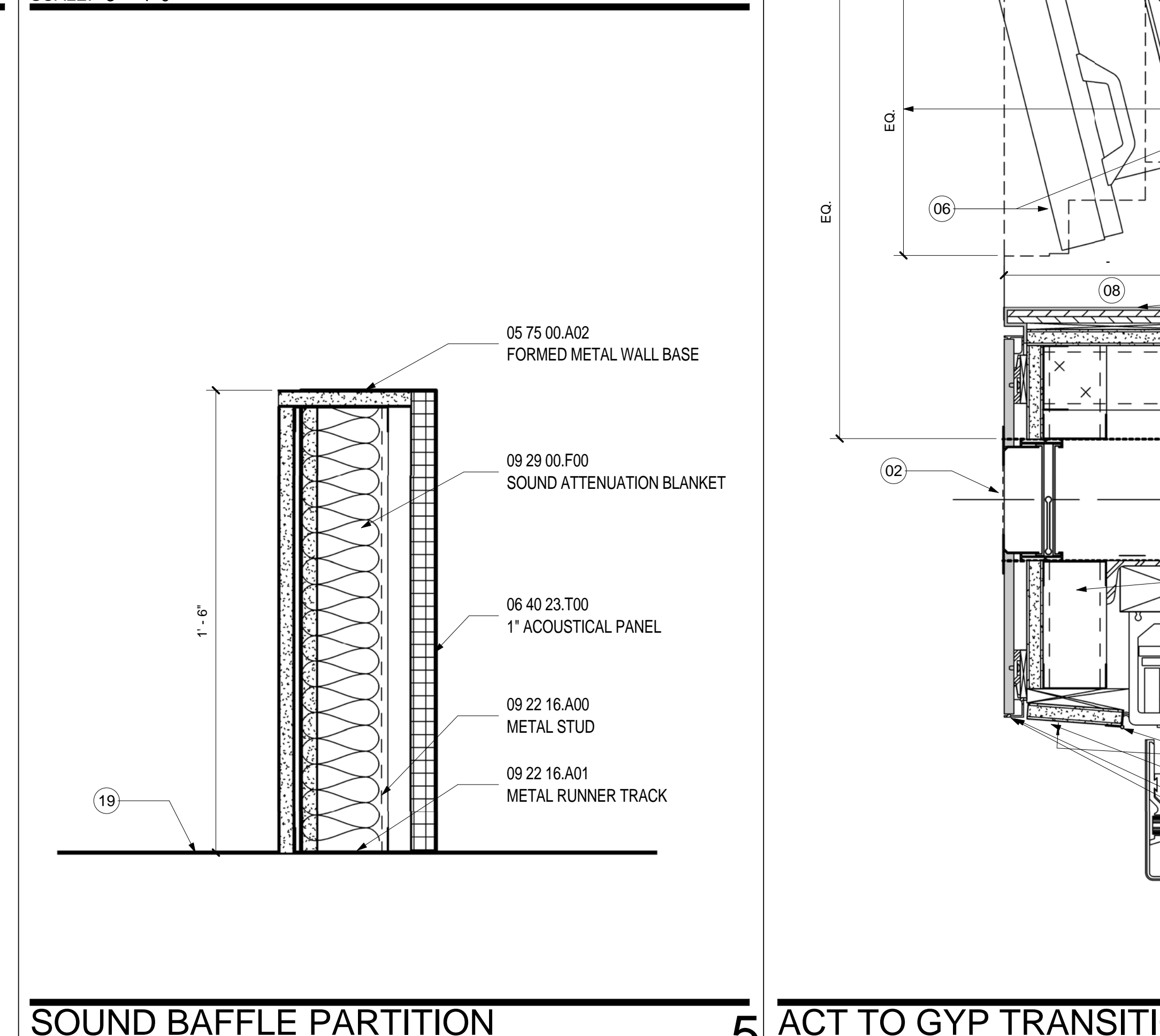
**OPERABLE PARTITION FLOOR TRACK**  
SCALE: 3" = 1'-0"  
A11.24



**ACT TO GYP TRANSITION WITH SPIDS**  
SCALE: 3" = 1'-0"  
A04.04.05



**OPERABLE PANEL JAMB AT TRESPA**  
SCALE: 6" = 1'-0"  
A11.24



**SOUND Baffle PARTITION**  
SCALE: 3" = 1'-0"  
A11.24

**SHEET NOTES**

- 01 RE: REFLECTED CEILING PLANS FOR INCLINE ANGLE
- 02 SCHEDULED LINEAR DIFFUSER. RE: MECHANICAL DRAWINGS FOR ADDITIONAL INFORMATION
- 03 SCHEDULED DUCTWORK. RE: MECHANICAL DRAWINGS FOR ADDITIONAL INFORMATION
- 04 BREAK-PAINTED METAL. FINISH TO MATCH MULLION.
- 05 LINE OF CEILING BEYOND. CEILING POCKET FOR DOOR STACK. RE: REFLECTED CEILING PLAN FOR ADDITIONAL INFORMATION
- 06 SECURITY PASSENGER INFORMATION DISPLAY SYSTEM. RE: POWER AND COMMUNICATION PLANS AND SCHEDULE FOR EQUIPMENT SPECIFICATIONS. COORDINATE WITH ELECTRICAL AND COMM. DRAWINGS. NO VISIBLE CORDS OR WIRING.
- 07 CPU FOR THE SECURITY PASSENGER INFORMATION DISPLAY SYSTEM. COORDINATE WITH P&C PLANS AND COMM. DRAWINGS
- 08 COORDINATE DEPTH WITH SELECTED SCREEN AND MOUNTING BRACKET
- 09 RE: MECHANICAL DRAWINGS AND STRUCTURAL DRAWINGS TO COORDINATE PEX TUBE LOCATIONS AND FOR ADDITIONAL INFORMATION
- 10 COORDINATE FLOOR STRIKE WITH RADIANT HEAT FLOORING BELOW. RE: MECHANICAL AND STRUCTURAL DRAWINGS FOR ADDITIONAL INFORMATION.
- 11 BLOCKING AS REQUIRED
- 12 TRESPA PANEL SEAMS TO ALIGN WITH TRACK IN CEILING ABOVE
- 13 OPEN TO BELOW
- 14 BRACE AS REQUIRED
- 15 LINE OF CEILING ABOVE
- 16 COORDINATE MOUNTING BRACKET AND METAL PLATE BLOCKING AS REQUIRED
- 17 FINISH FLOOR LEVEL
- 18 RE: MECHANICAL DRAWINGS AND STRUCTURAL DRAWINGS TO COORDINATE W.W.R LOCATIONS AND FOR ADDITIONAL INFORMATION
- 19 TOP OF METAL DECK. RE: STRUCTURAL DRAWINGS FOR ADDITIONAL INFORMATION

**GENERAL NOTES**

Portland International Jetport  
1001 Westbrook Street  
Portland, Maine 04102

**Gensler**  
2020 K Street, Northwest  
Suite 200  
Washington DC 20006  
Telephone 202.721.5200  
Facsimile 202.872.8587

Date	Description
01/23/09	95% CONSTRUCTION DOCUMENTS
10/26/09	ISSUED FOR PERMIT
145 09/01/11	ISSUED FOR CONSTRUCTION

Seal/Signature

Project Name  
PWM Terminal Enhancement

Project Number  
09.6395.000

Description  
INTERIOR DETAILS

Scale  
As indicated

**A12.68**

© 2009 Gensler