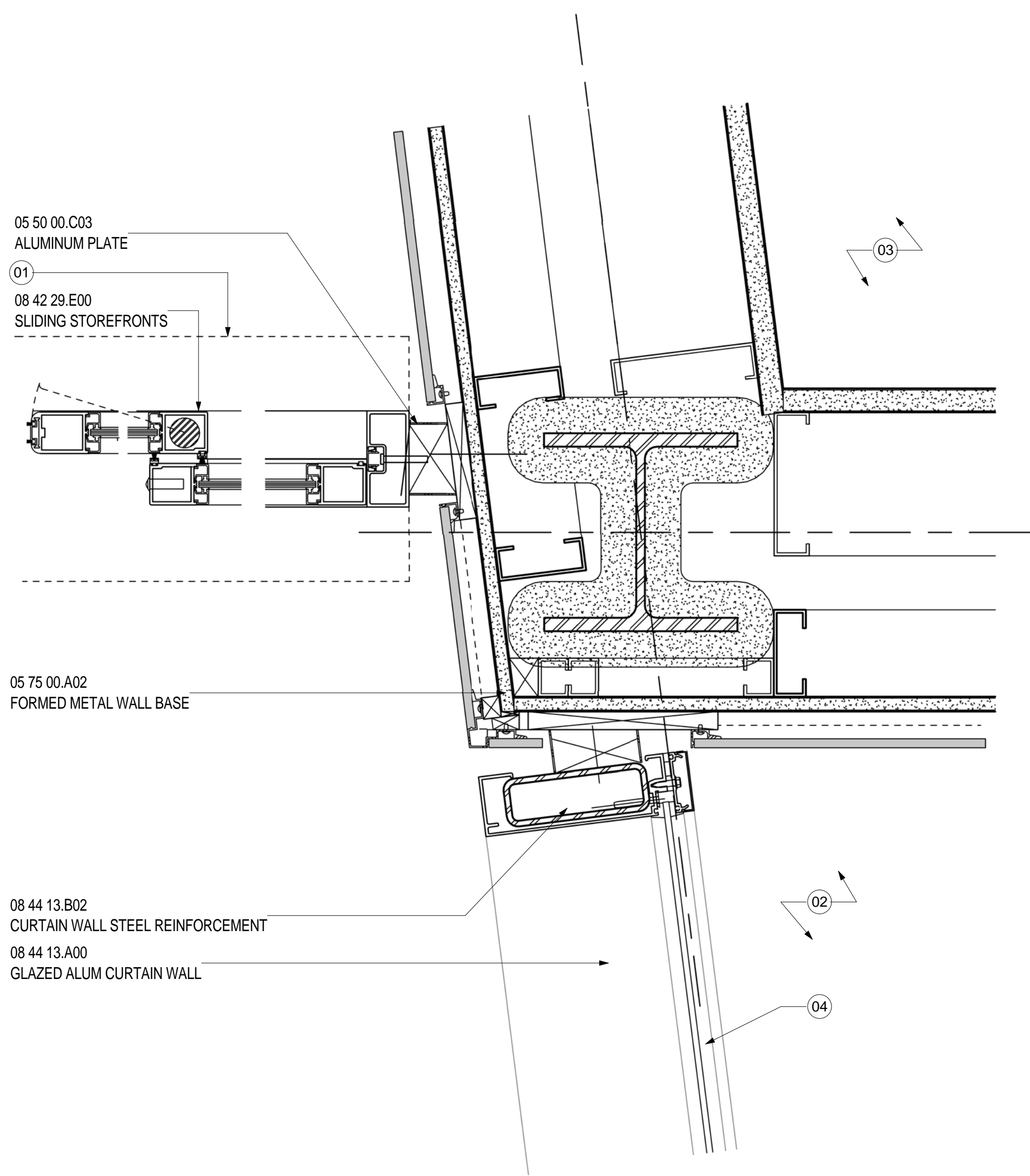
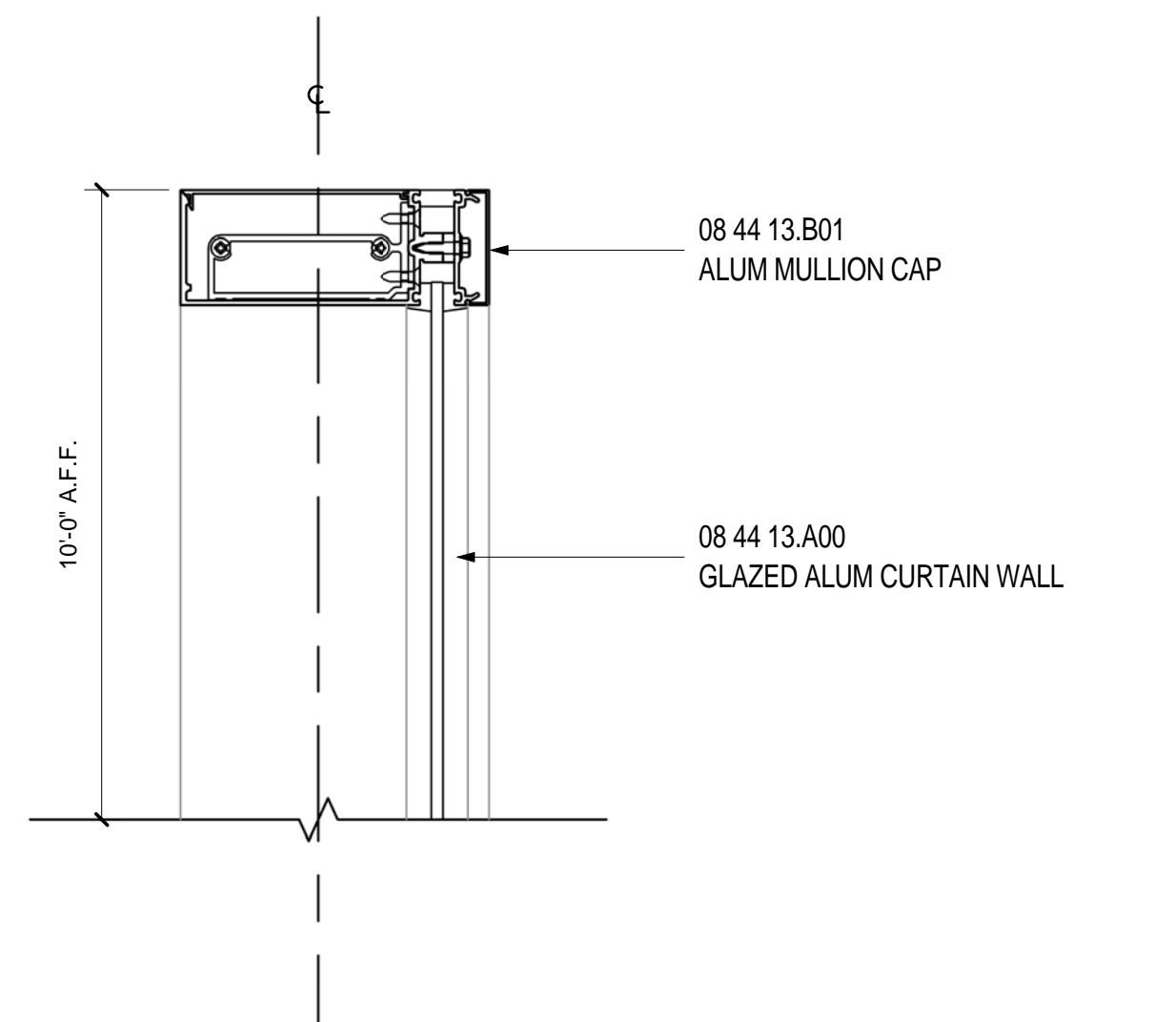


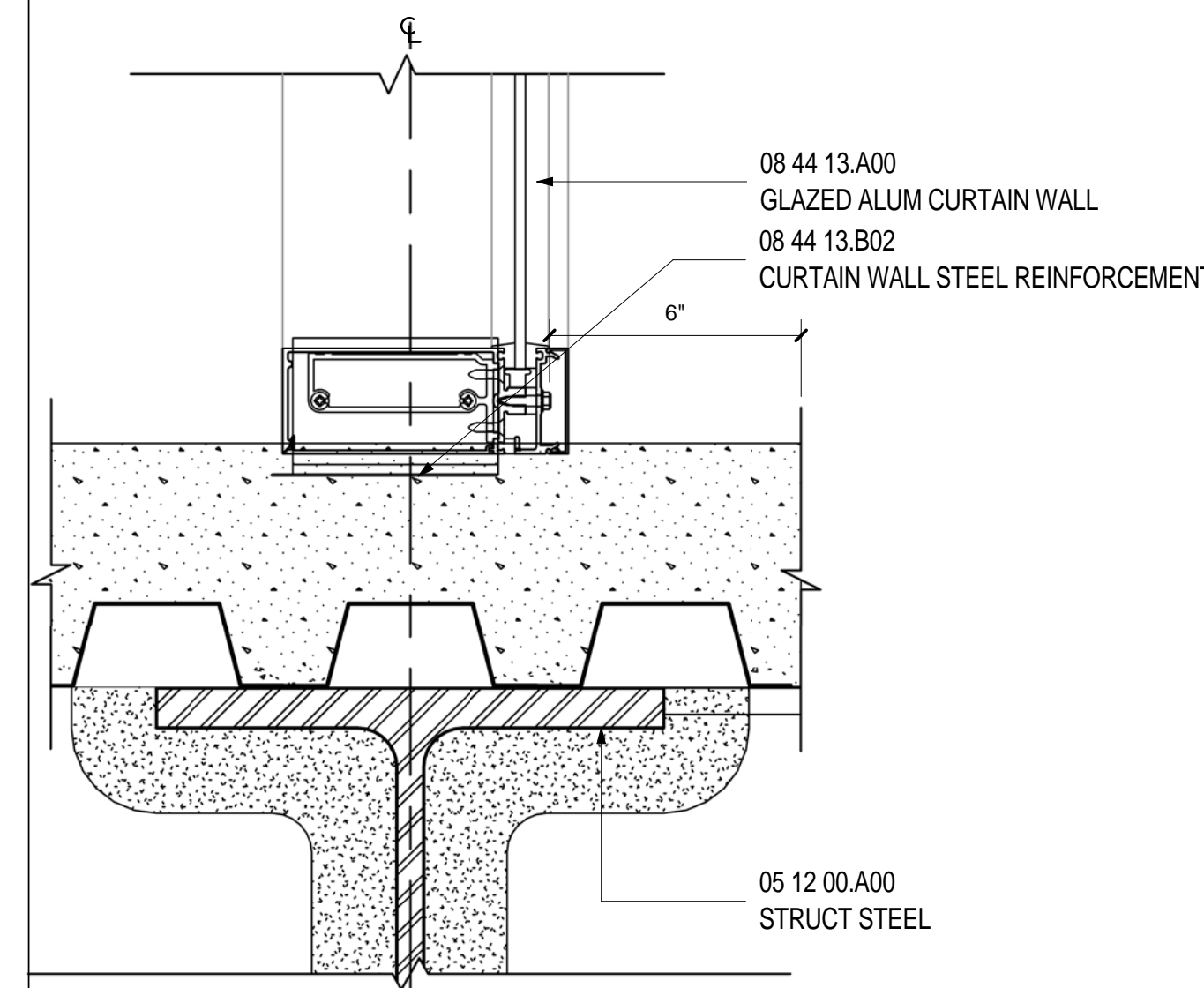
HEAD/SILL- DOOR TYPE E- BY PASS LN 11
SCALE: 3" = 1'-0" A11.24



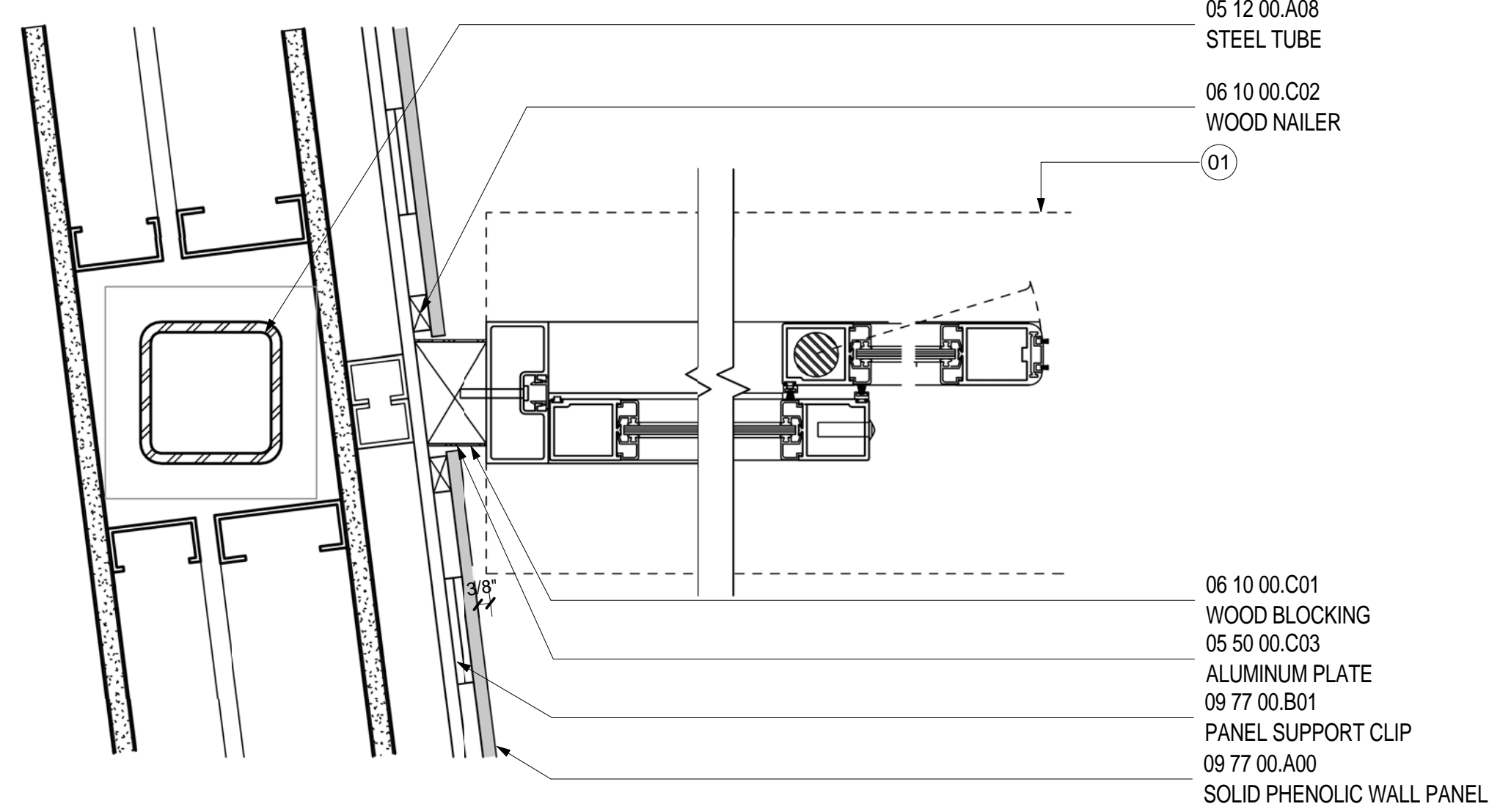
JAMB 1- DOOR TYPE E- BY PASS LANE 6
SCALE: 3" = 1'-0" A10.30



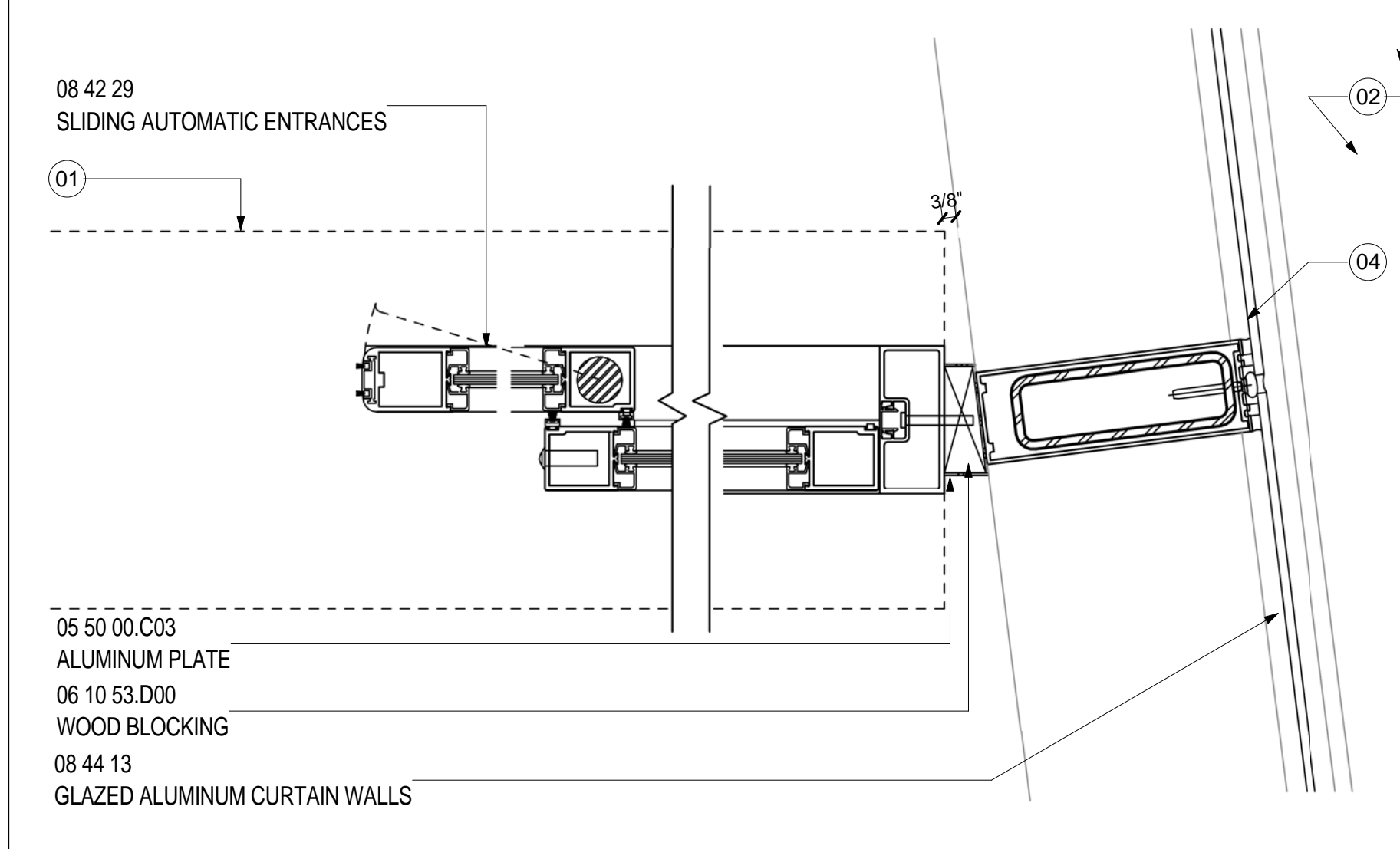
HEAD- INT. CUR.WALL- BY PASS LANE 1
SCALE: 3" = 1'-0" ASK-066



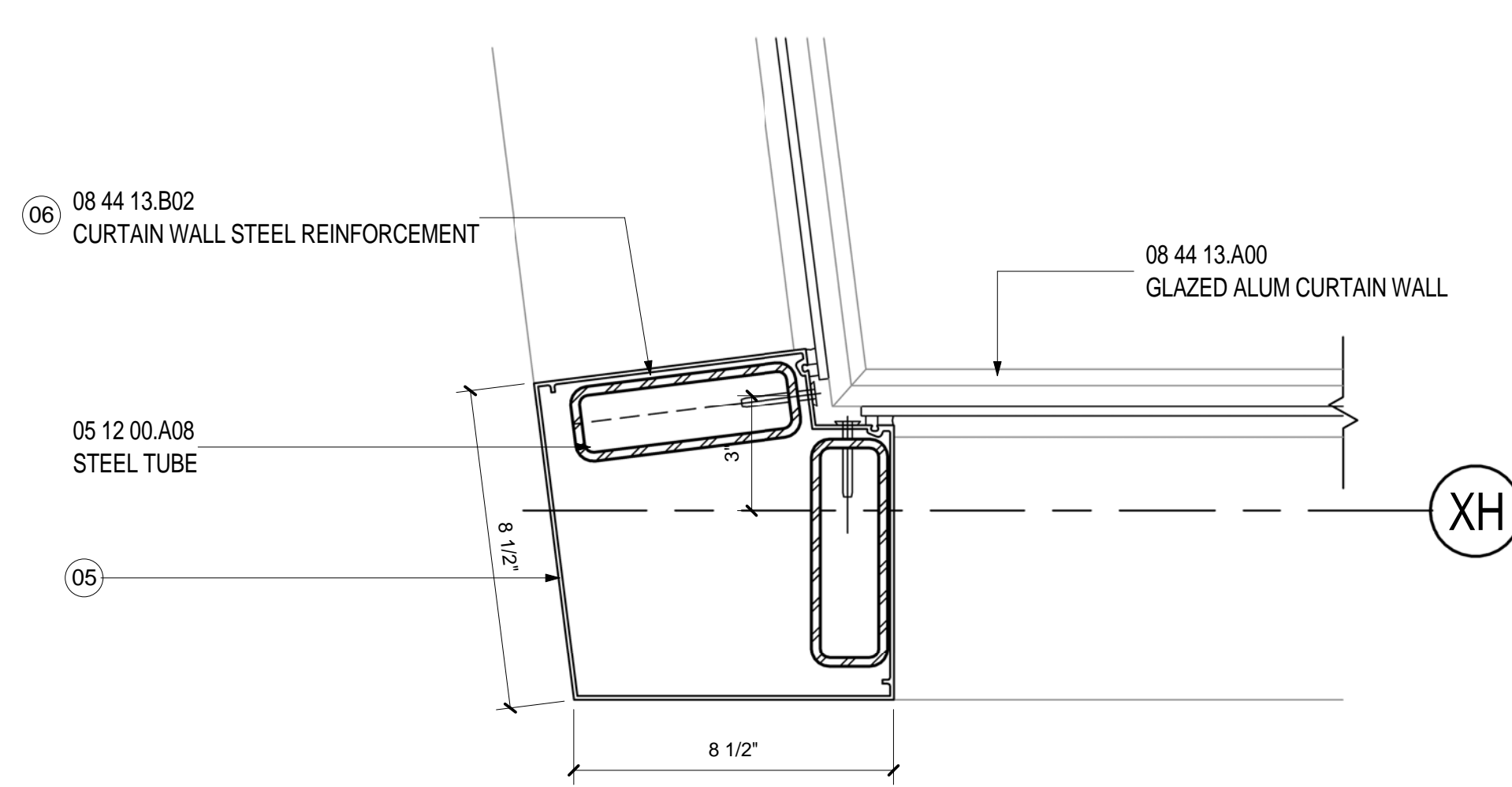
SILL- INT. CUR.WALL- BY PASS LANE 2
SCALE: 3" = 1'-0" ASK-066



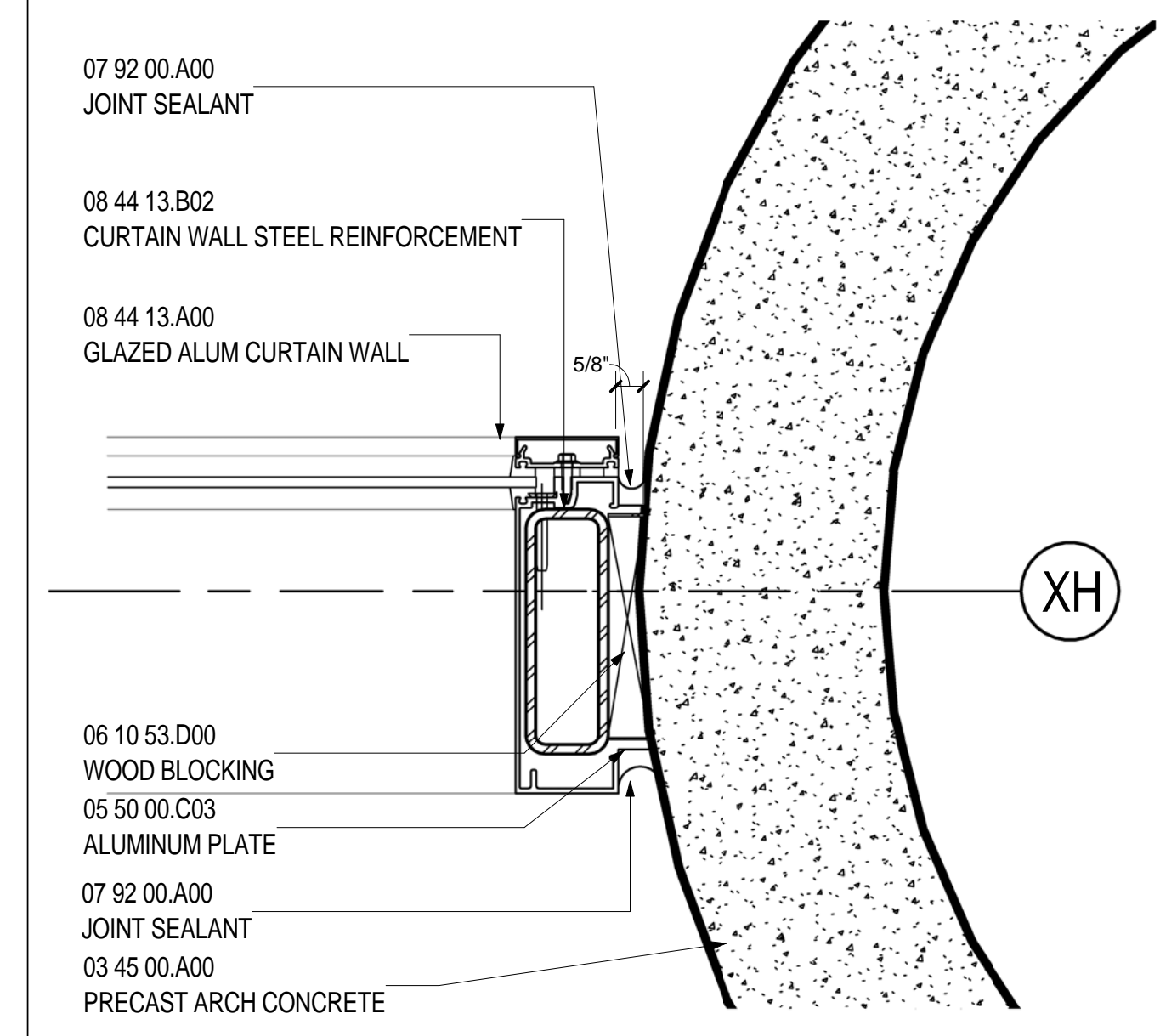
JAMB 3- DOOR TYPE E- BY PASS LANE 12
SCALE: 3" = 1'-0" A02.04.05



JAMB 2- DOOR TYPE E- BY PASS LANE 7
SCALE: 3" = 1'-0" A02.04.05



CORNER DTL CW @ BYPASS LANE 8
SCALE: 3" = 1'-0" A02.04.05



JAMB- INT.CUR.WALL AT CONC.COL. 4
SCALE: 3" = 1'-0" A02.04.05

SHEET NOTES

- 01 LINE OF SLIDING DOOR HEAD AND SOFFIT ABOVE
- 02 OPEN TO BELOW
- 03 ELEVATOR SHAFT
- 04 RE: STRUCTURAL DRAWINGS FOR EDGE OF DECK (EOD) DIMENSION
- 05 ALUMINUM CORNER AT CUSTOM ANGLE
- 06

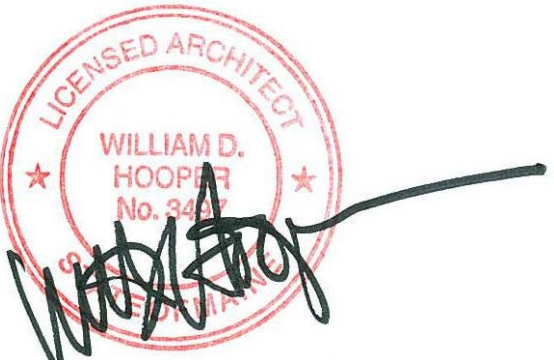
GENERAL NOTES

Portland International Jetport
1001 Westbrook Street
Portland, Maine 04102

Gensler
2020 K Street, Northwest
Suite 200
Washington DC 20006
Telephone 202.721.5200
Facsimile 202.872.8587

Date	Description
01/23/09	95% CONSTRUCTION DOCUMENTS
10/26/09	ISSUED FOR PERMIT
145 09/01/11	ISSUED FOR CONSTRUCTION

Seal/Signature



Project Name
PWM Terminal Enhancement

Project Number
09.6395.000

Description
INTERIOR DETAILS

Scale
3" = 1'-0"

A12.66

© 2009 Gensler