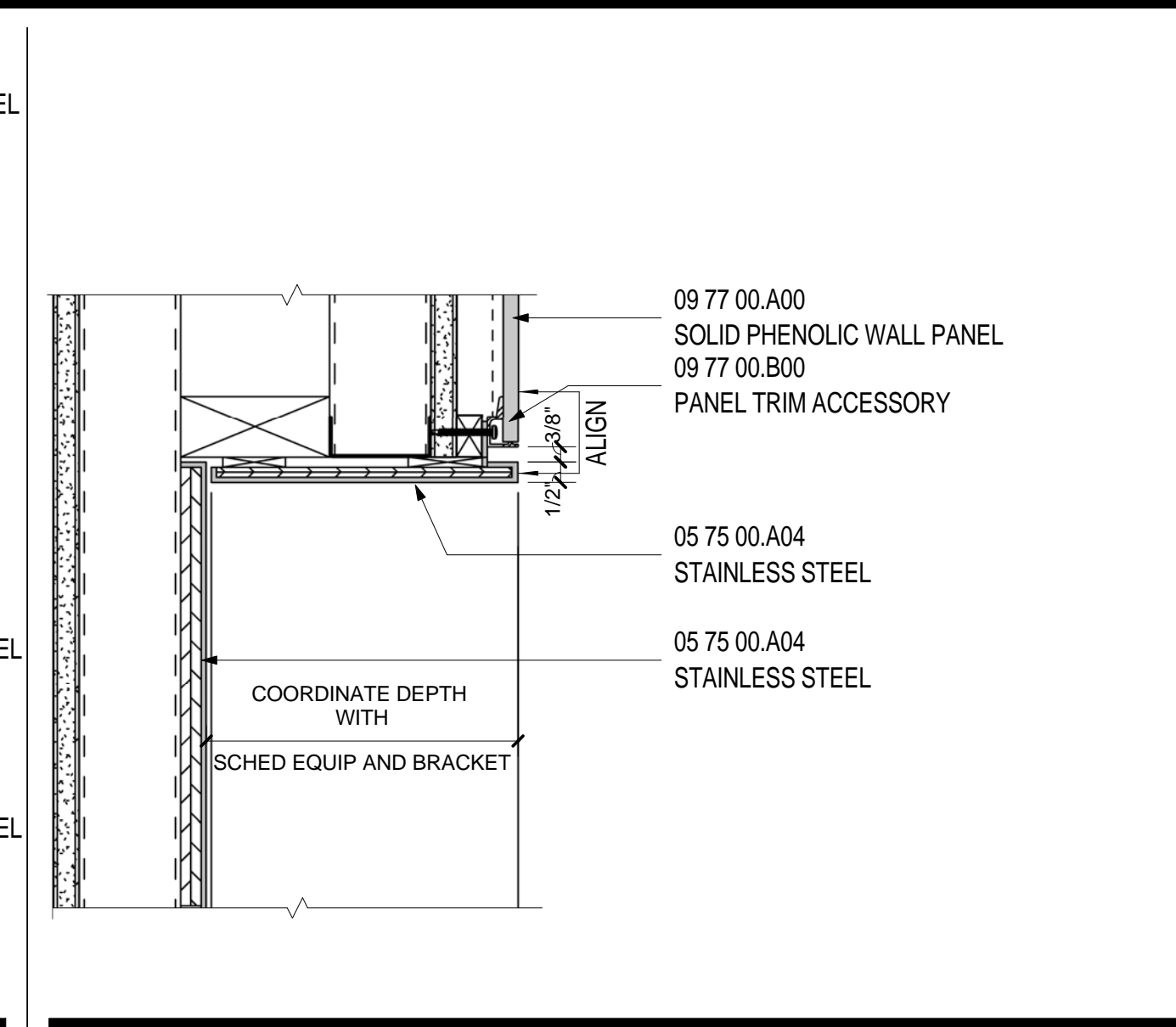
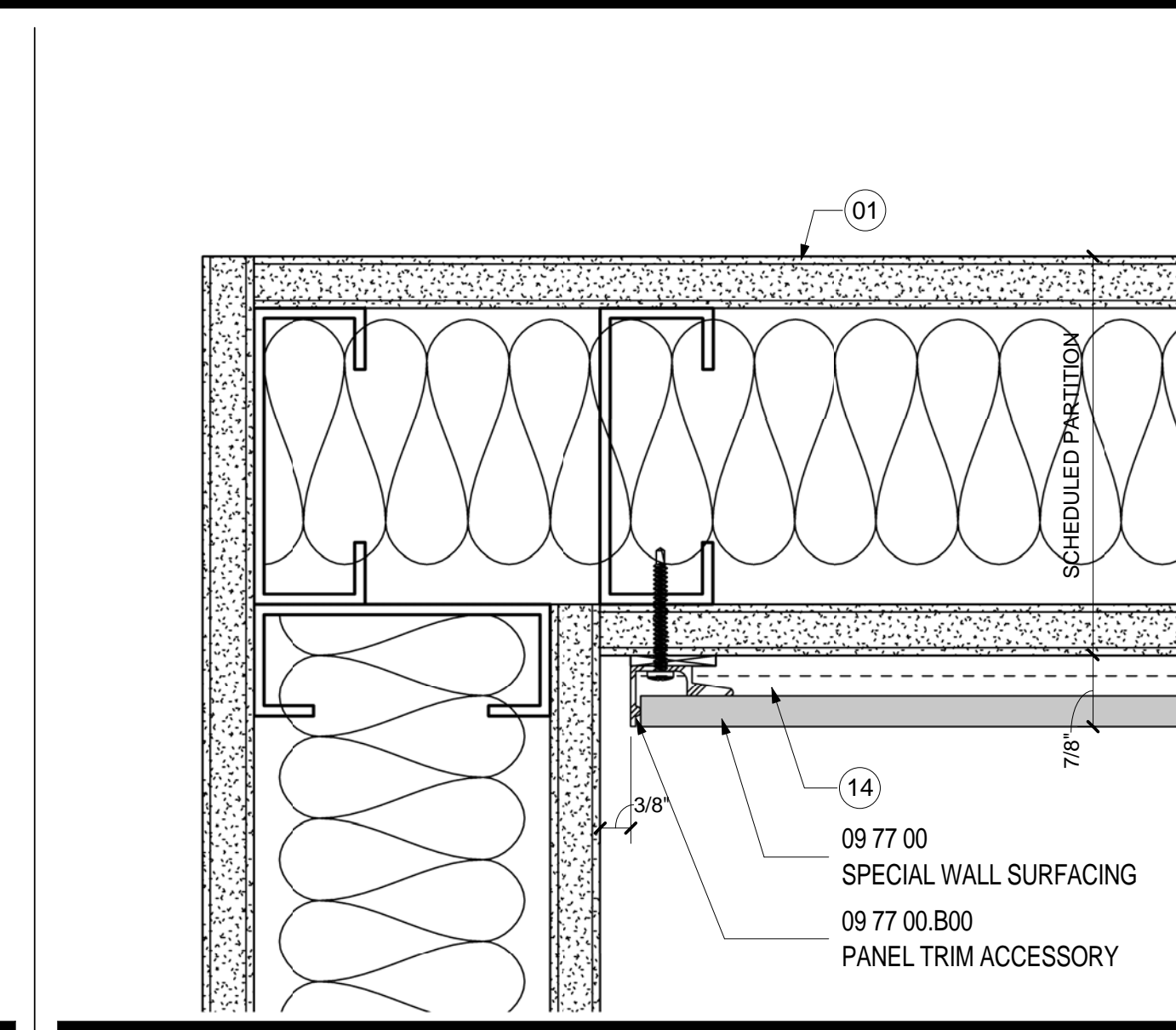


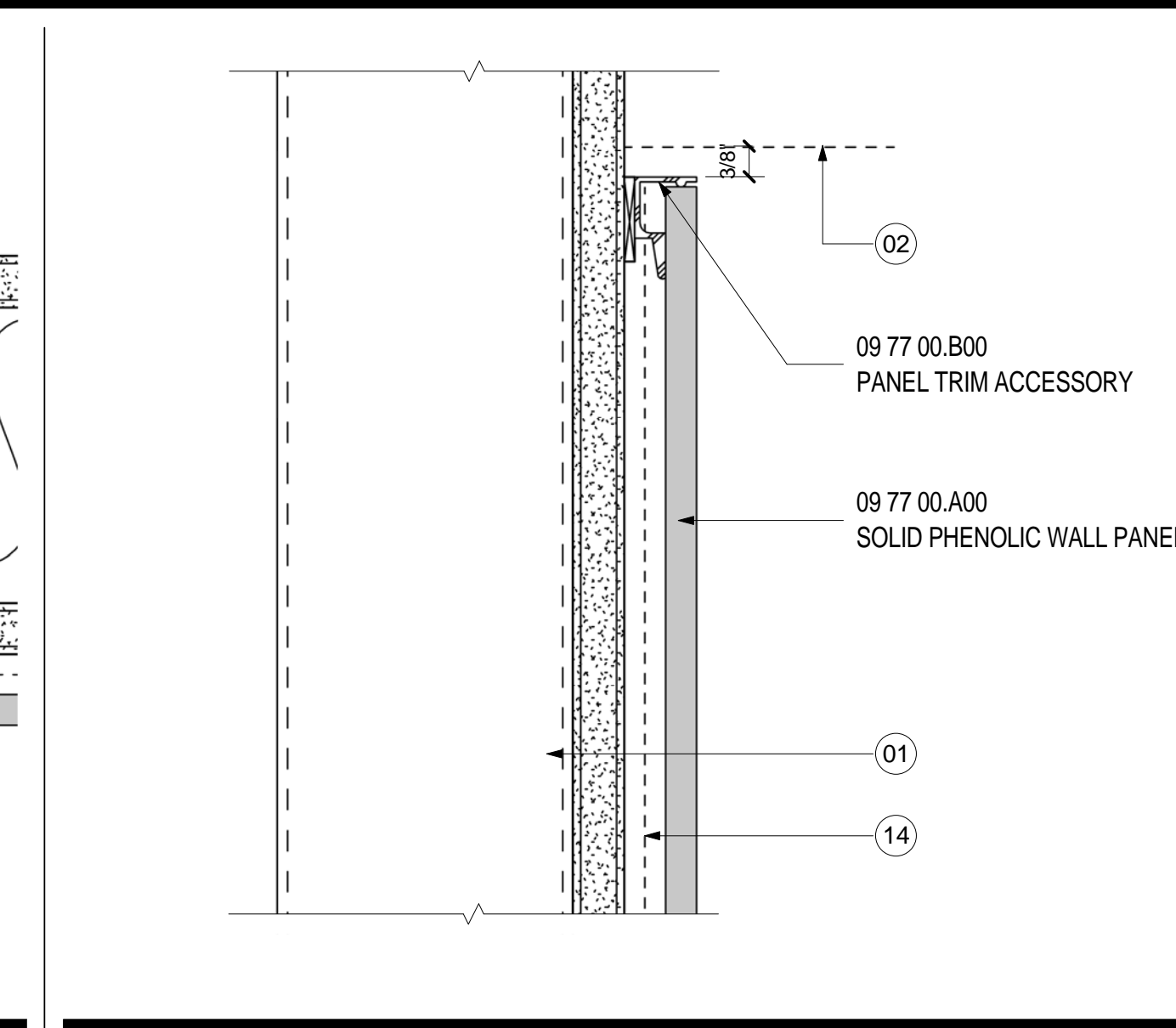
METAL PORTAL @ FOOD COURT
SCALE: 1 1/2" = 1'-0"



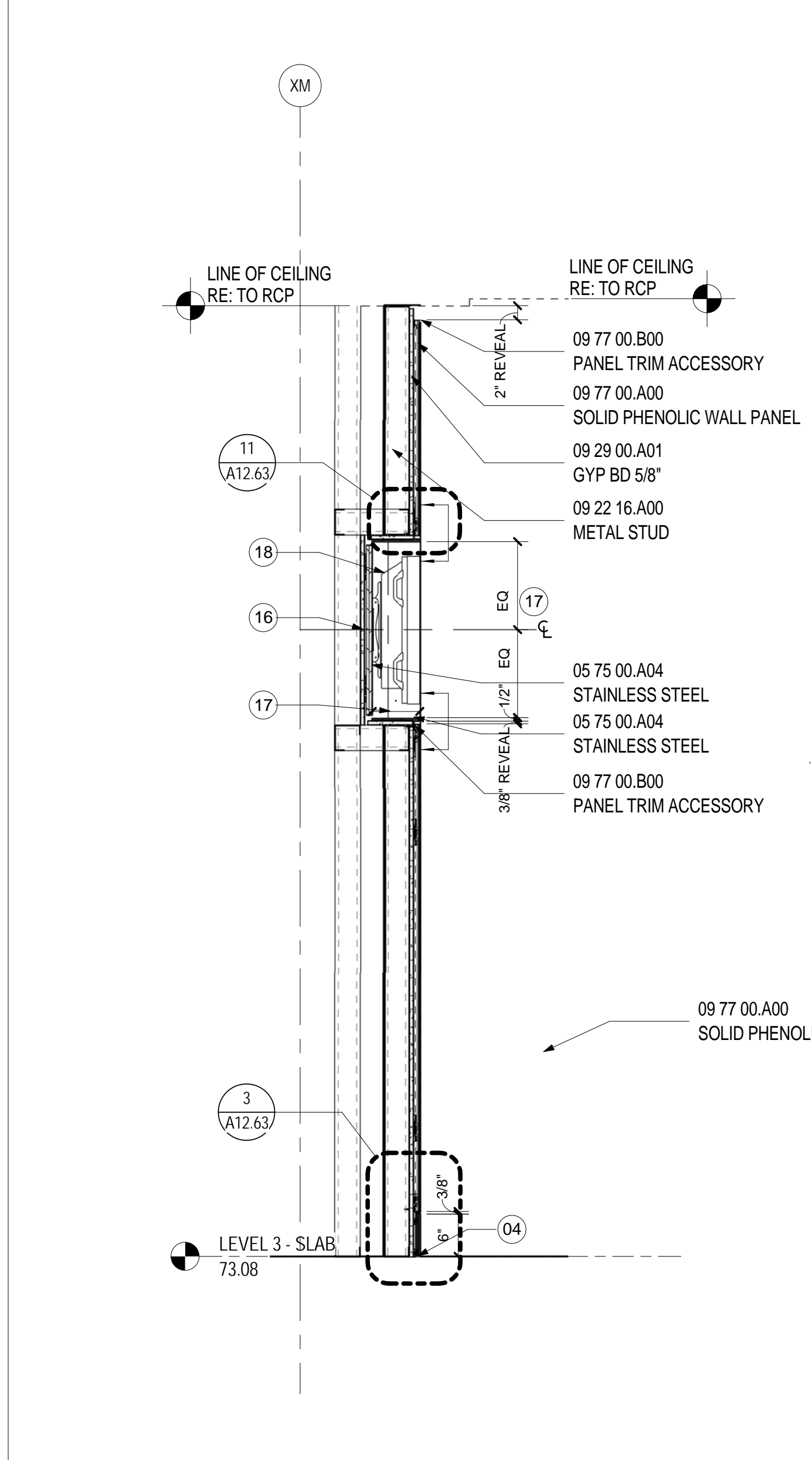
TRESPA EDGE DETAIL AT FIDS
SCALE: 3" = 1'-0"



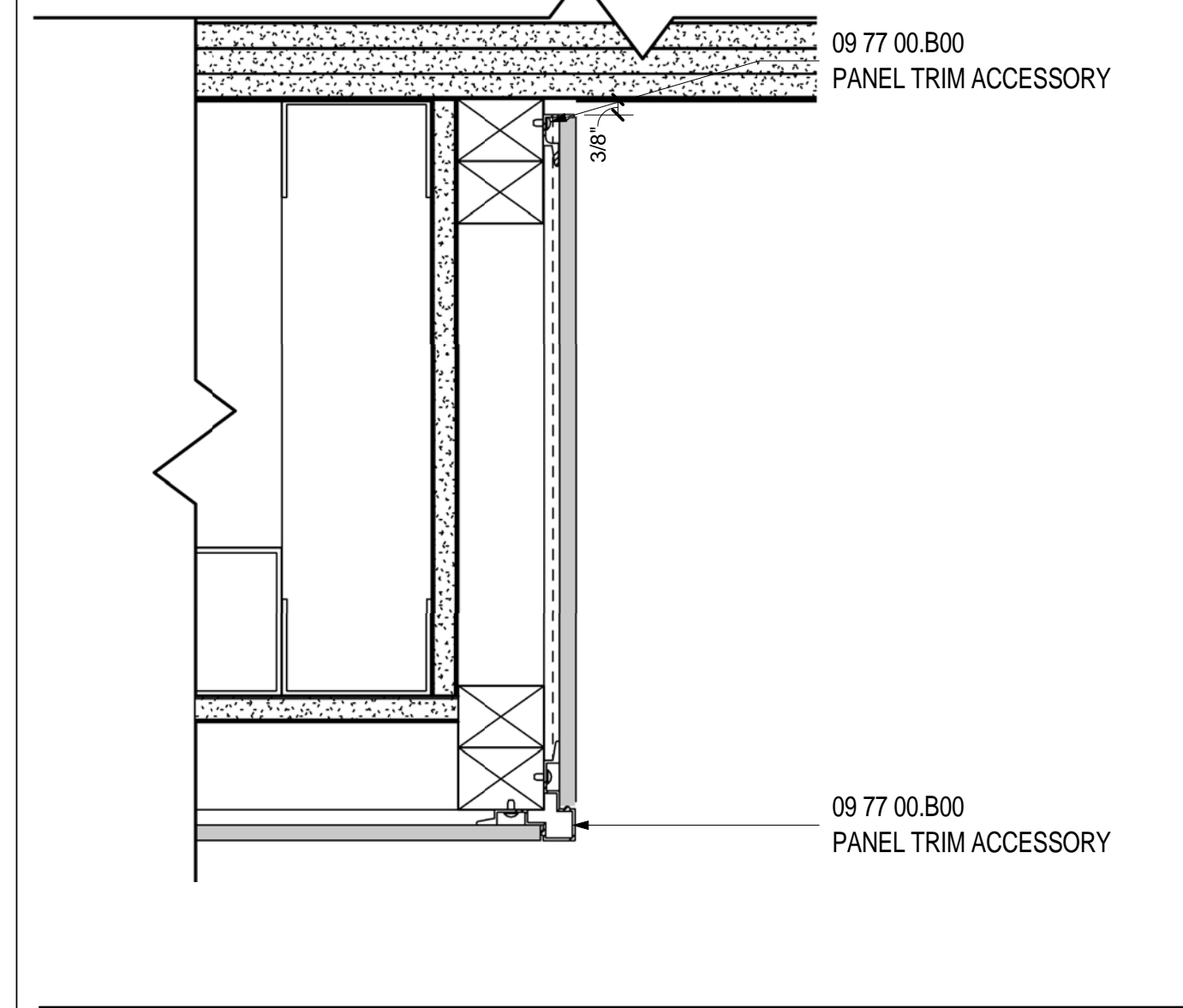
TRESPA EDGE DETAIL
SCALE: 6" = 1'-0"



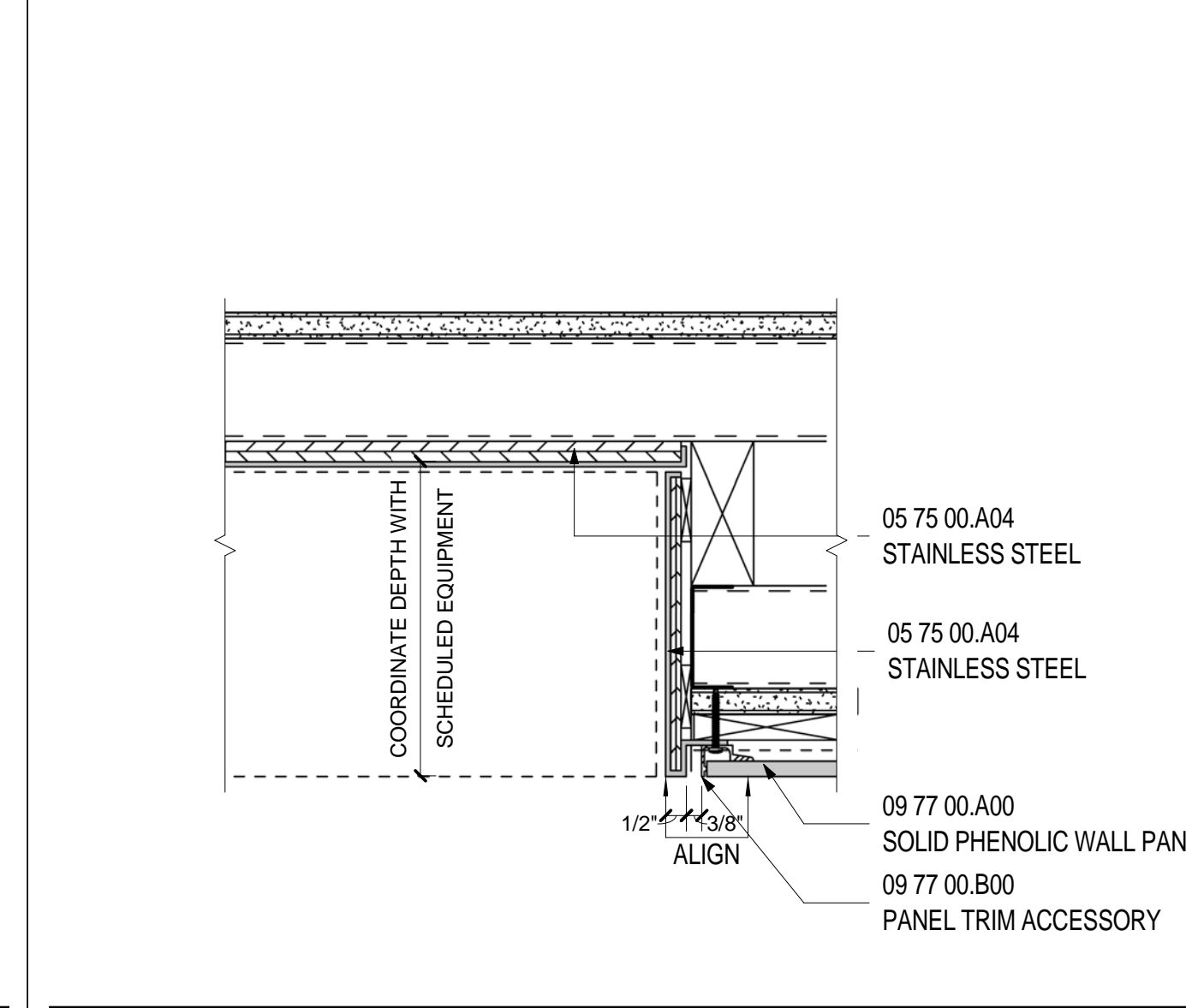
TRESPA HEAD
SCALE: 6" = 1'-0"



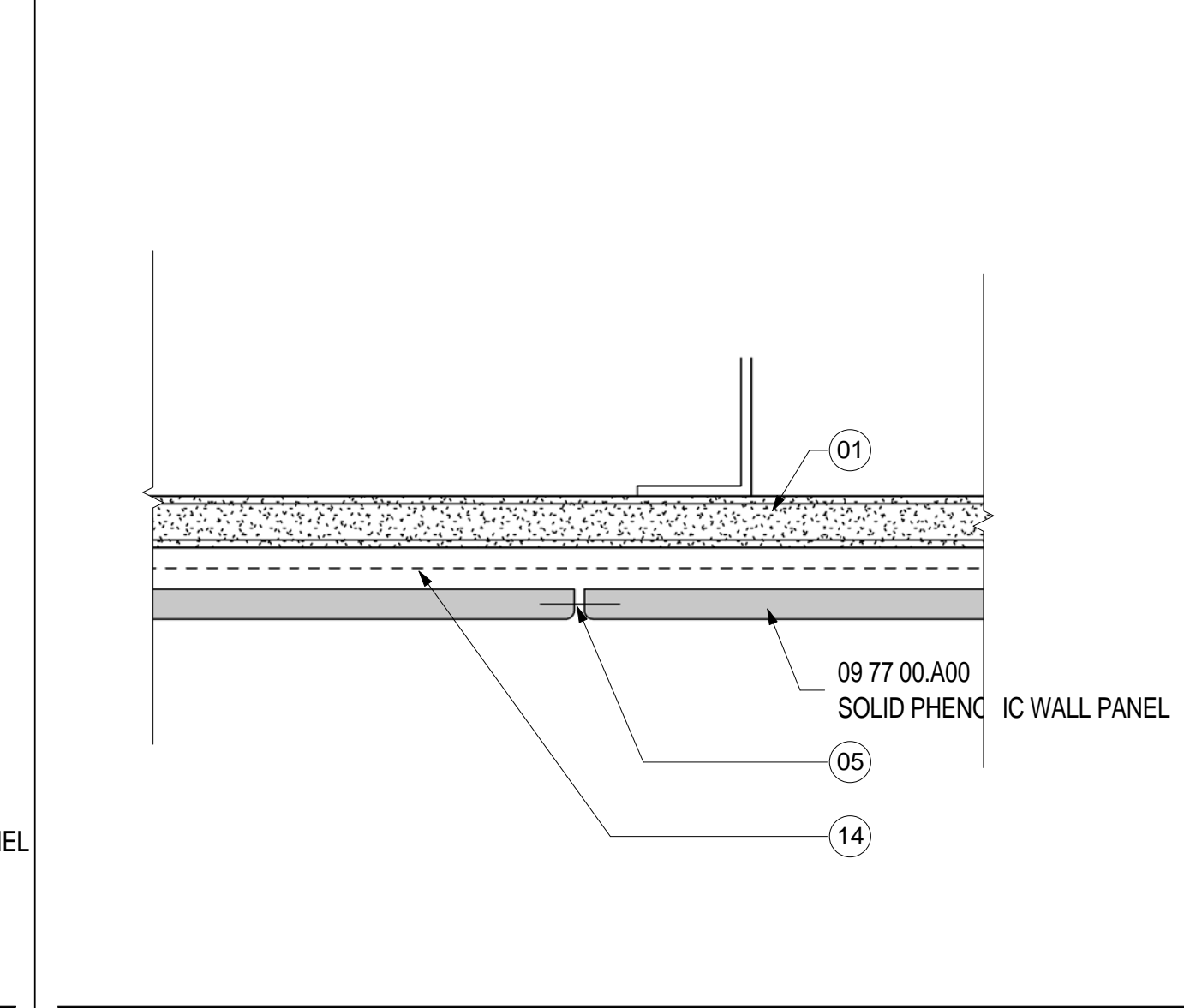
SECTION AT GIDS WALL
SCALE: 3/4" = 1'-0"



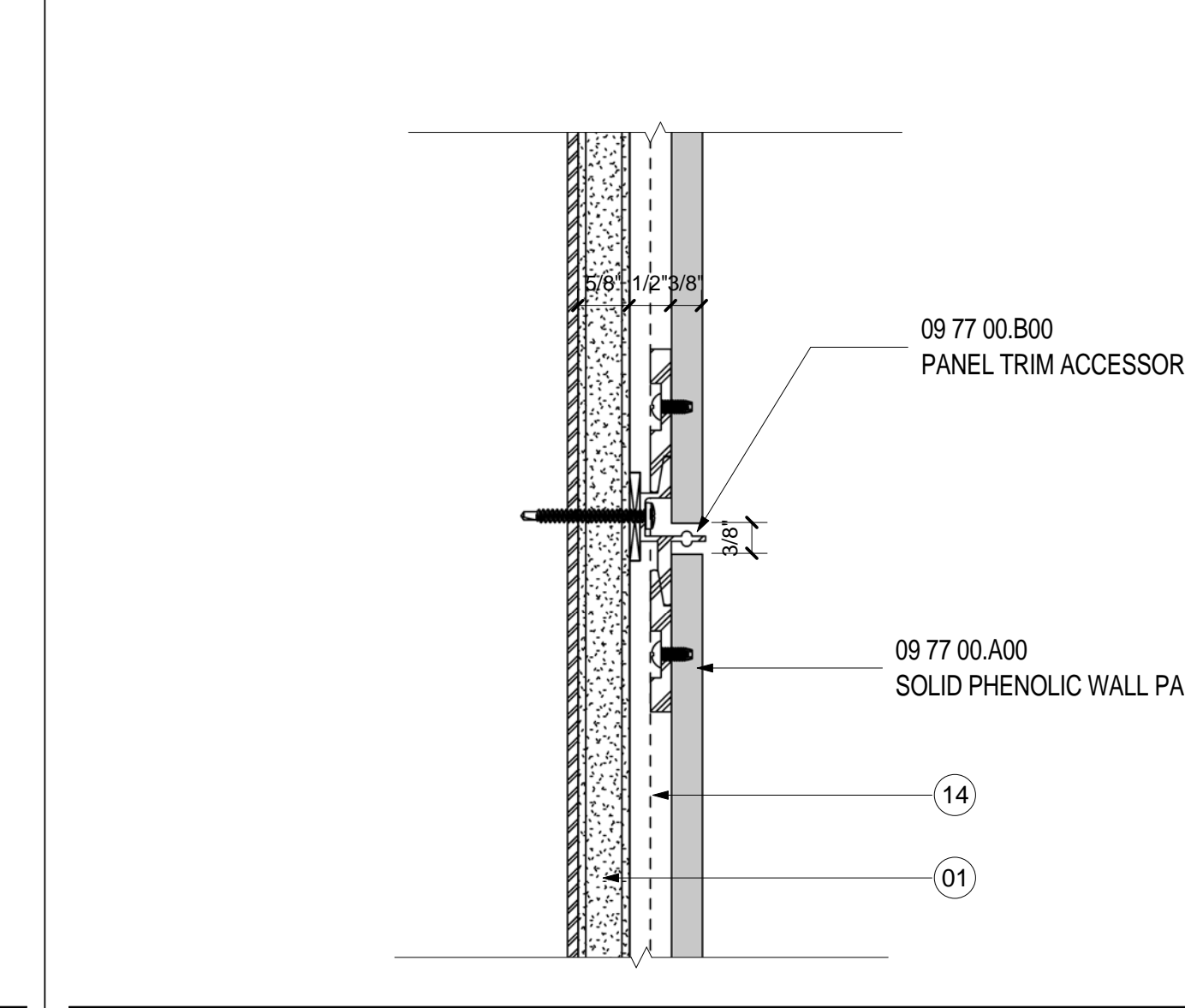
TRESPA WRAP DETAIL
SCALE: 3" = 1'-0"



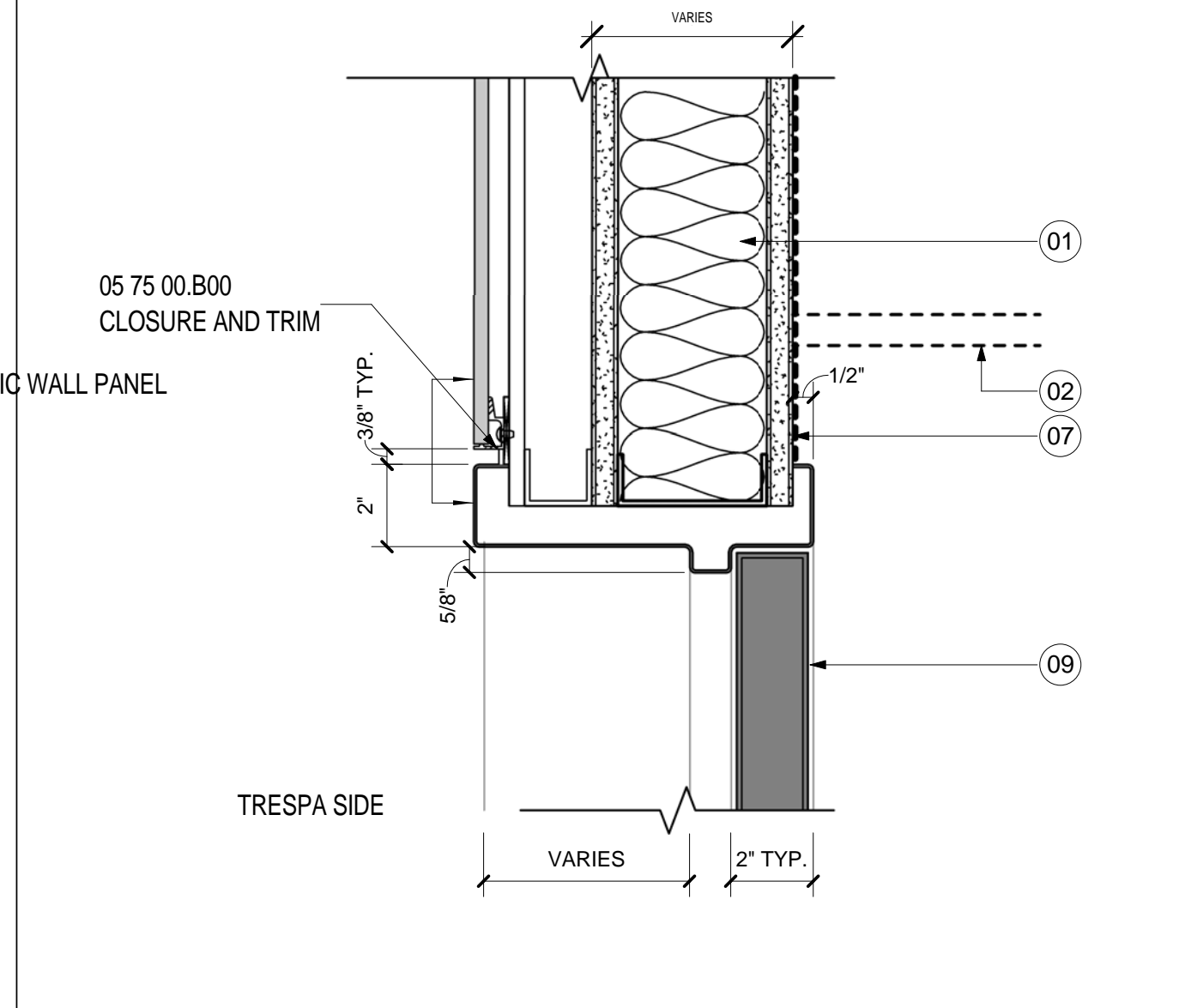
TRESPA EDGE PLAN DETAIL AT FIDS
SCALE: 3" = 1'-0"



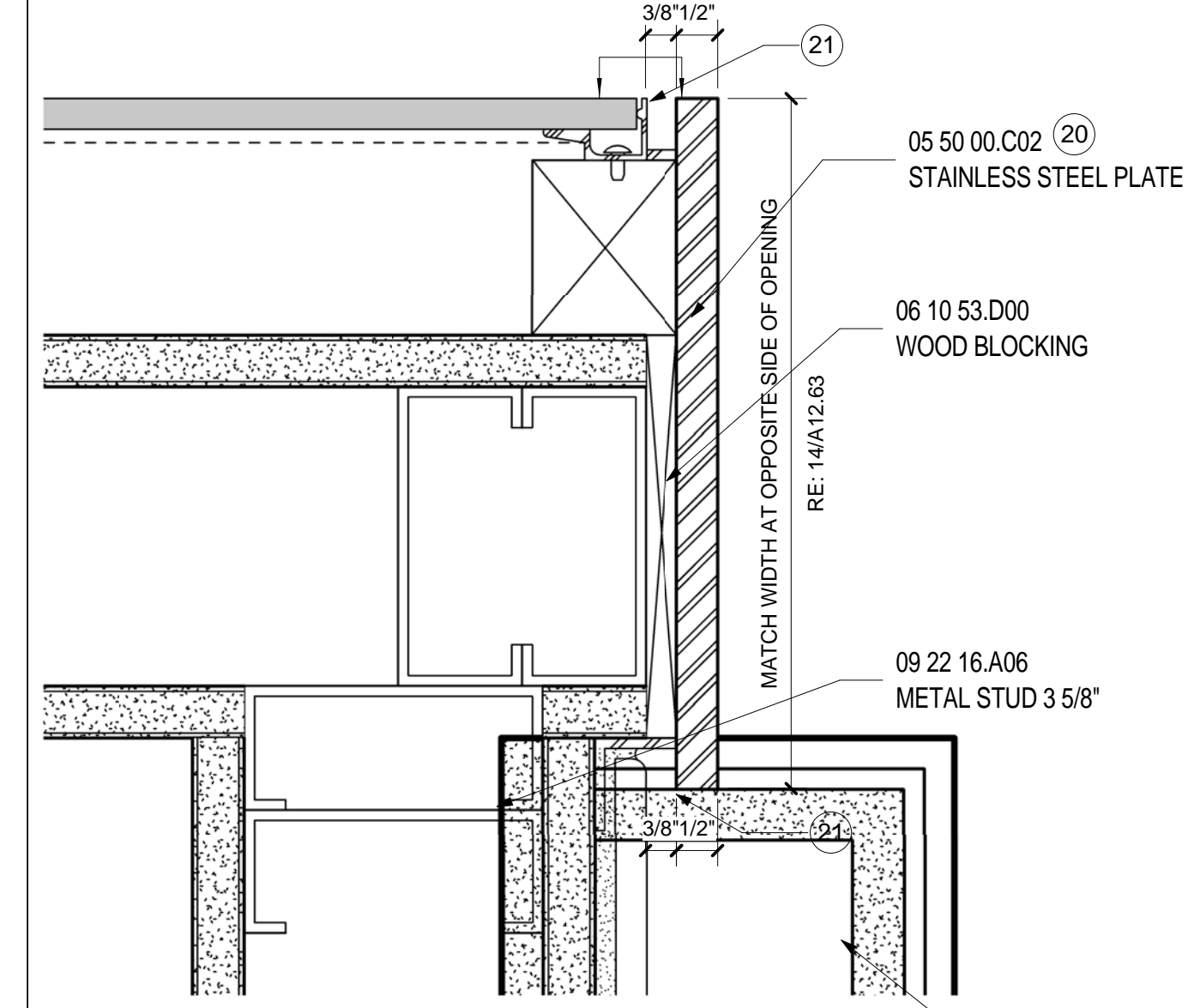
TRESPA VERTICAL JOINT
SCALE: 6" = 1'-0"



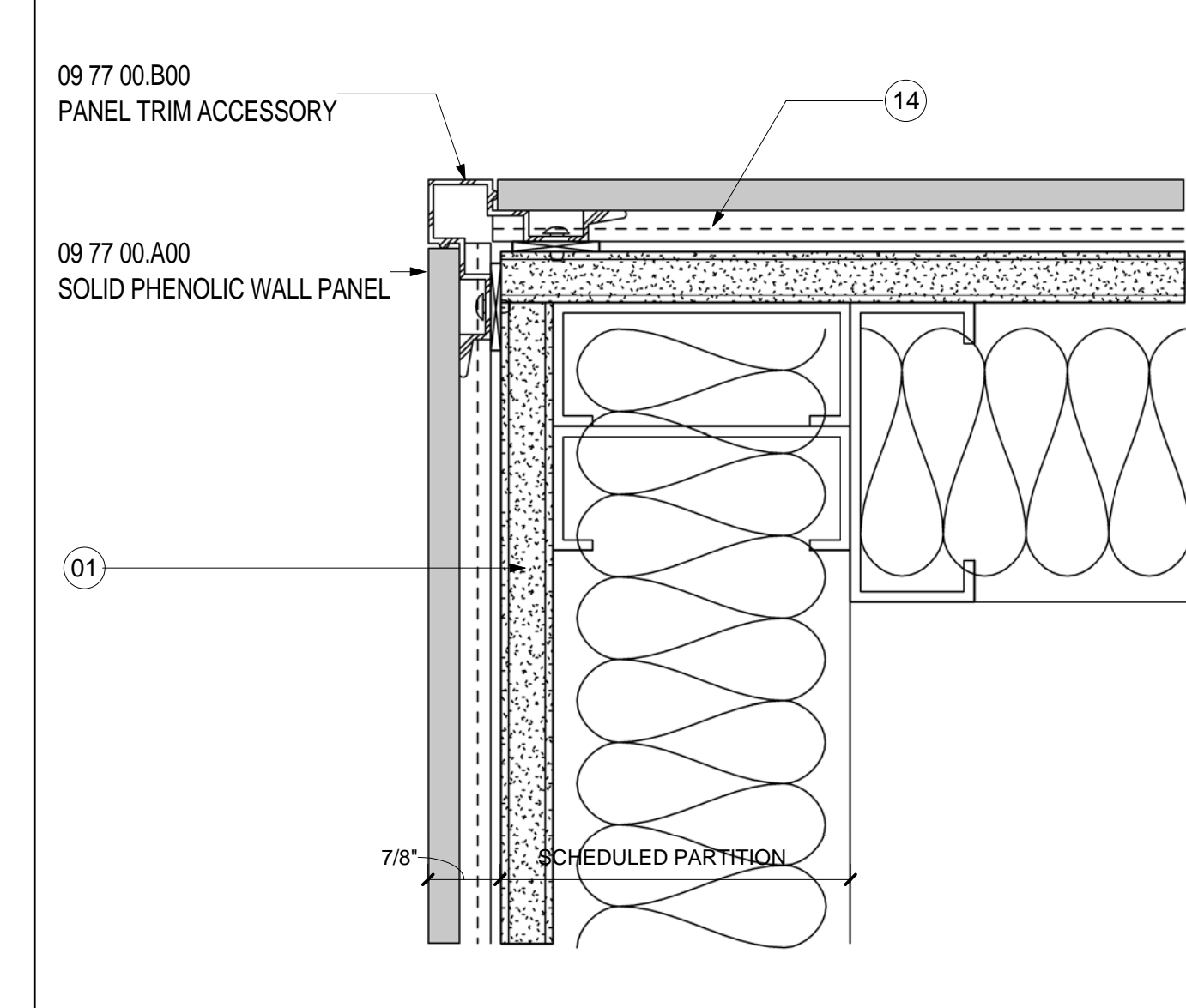
TRESPA HORIZONTAL JOINT
SCALE: 6" = 1'-0"



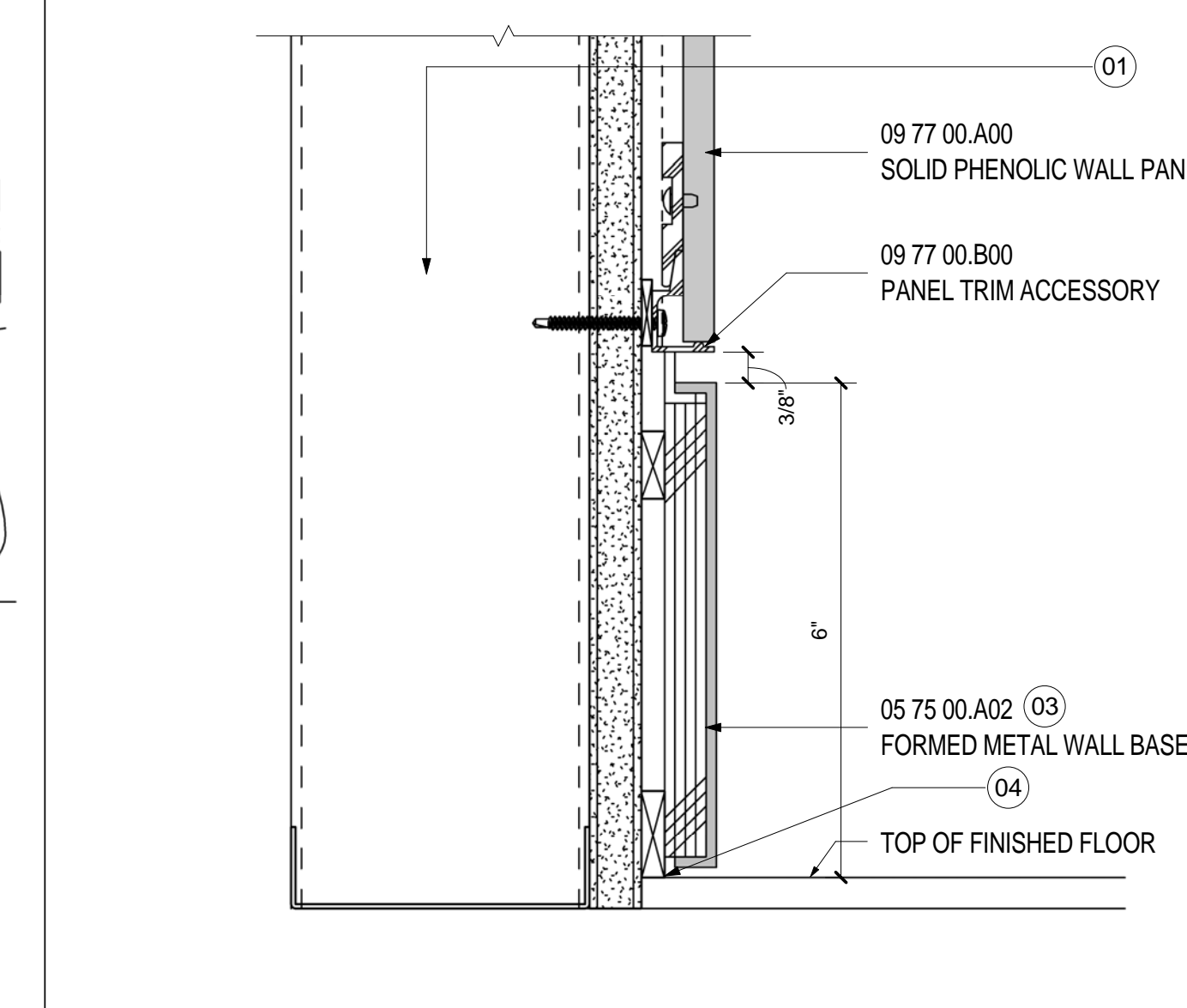
HEAD- DOOR TYPE A1- TRESPA
SCALE: 3" = 1'-0"



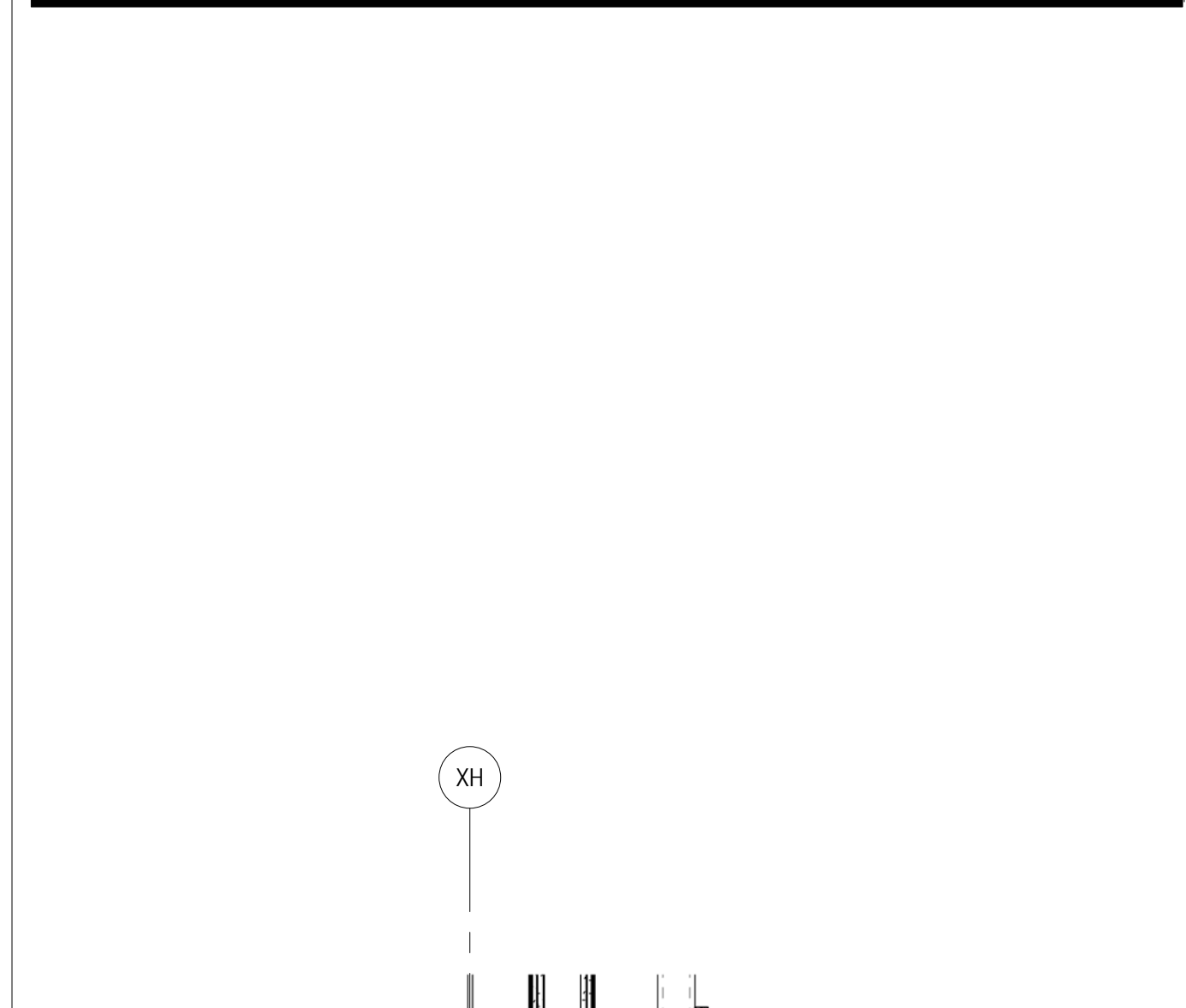
PLAN @ GLASS TILE/SL CORNER
SCALE: 6" = 1'-0"



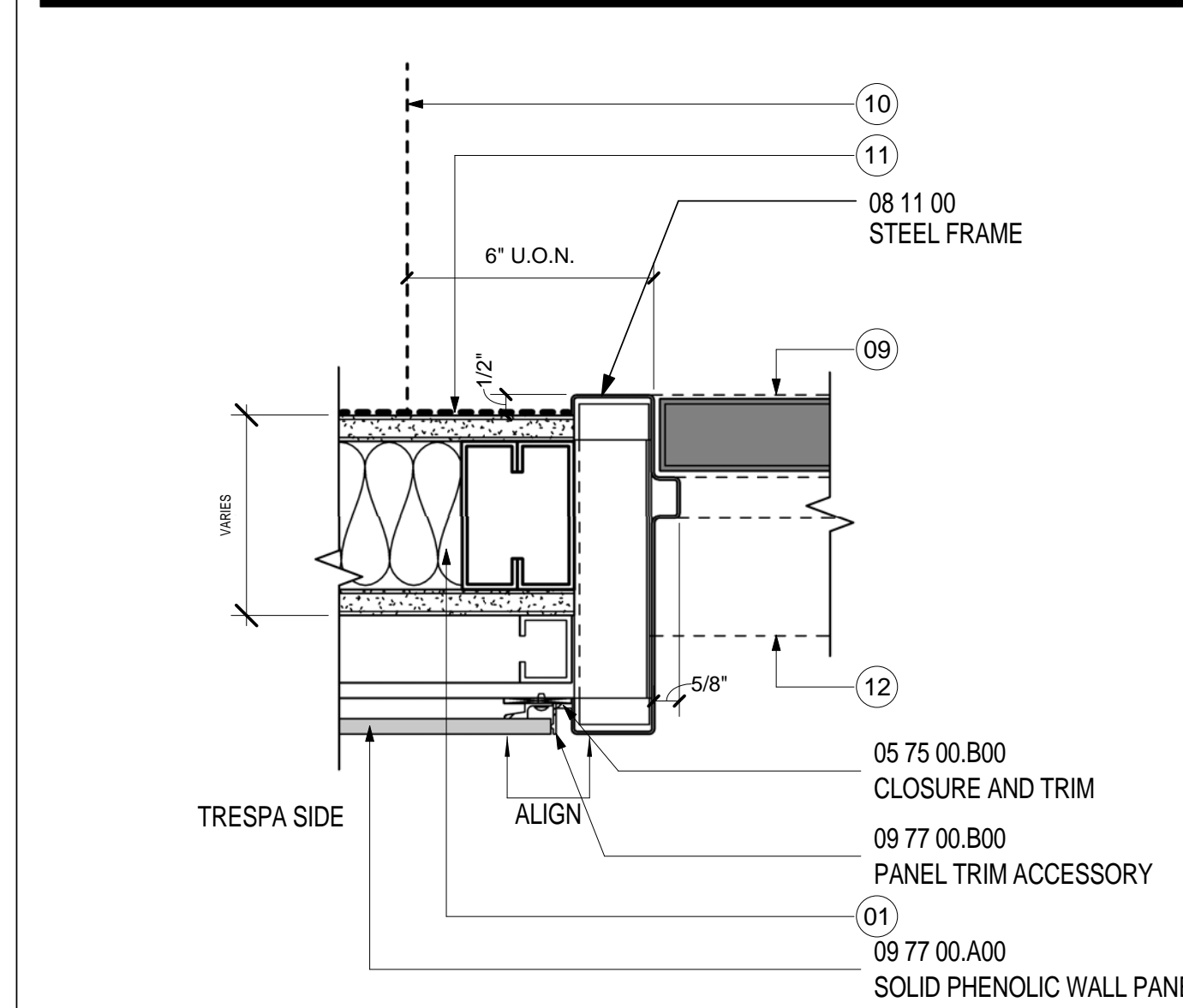
TRESPA OUTSIDE CORNER
SCALE: 6" = 1'-0"



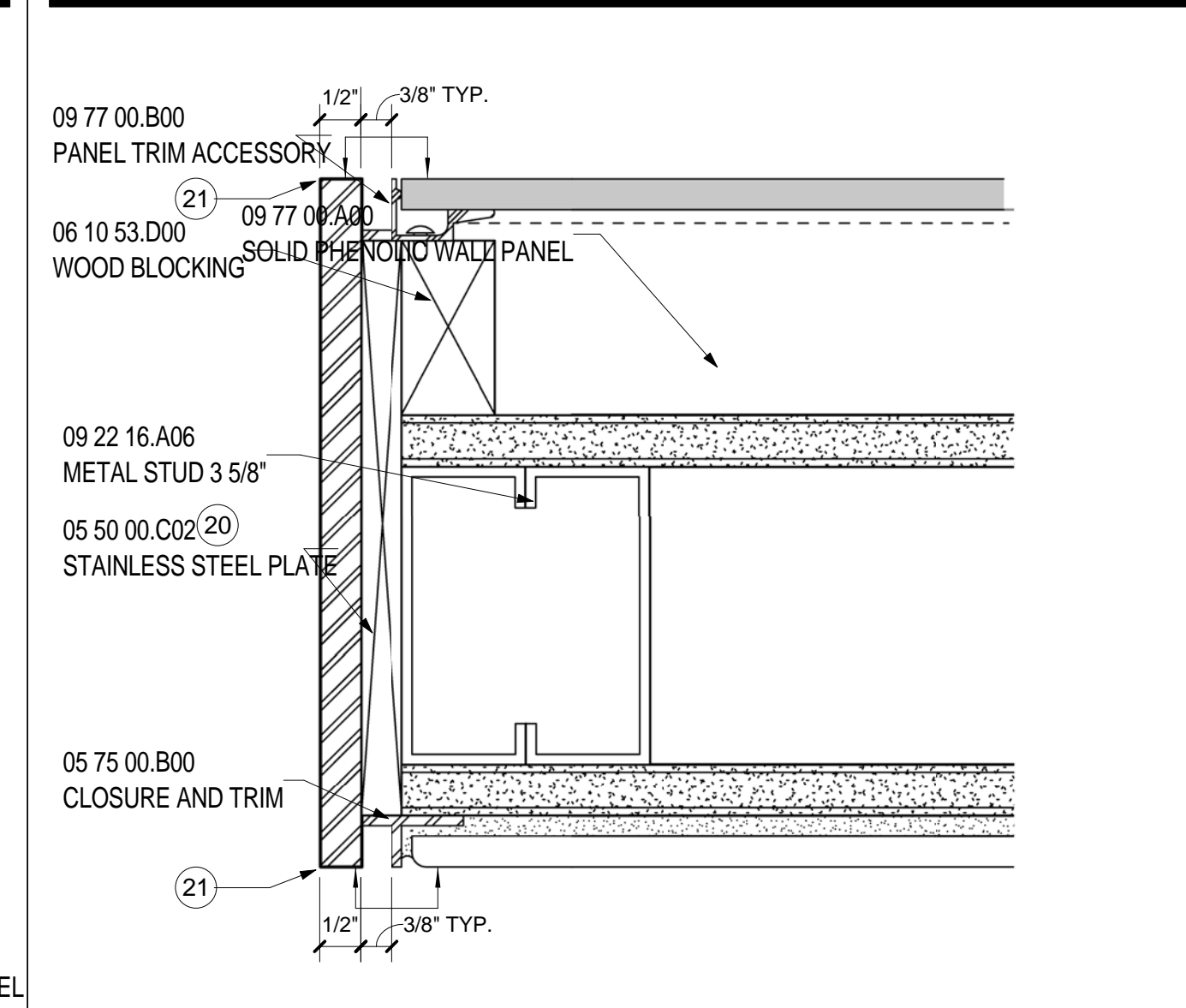
TRESPA EDGE - FLUSHED METAL BASE
SCALE: 6" = 1'-0"



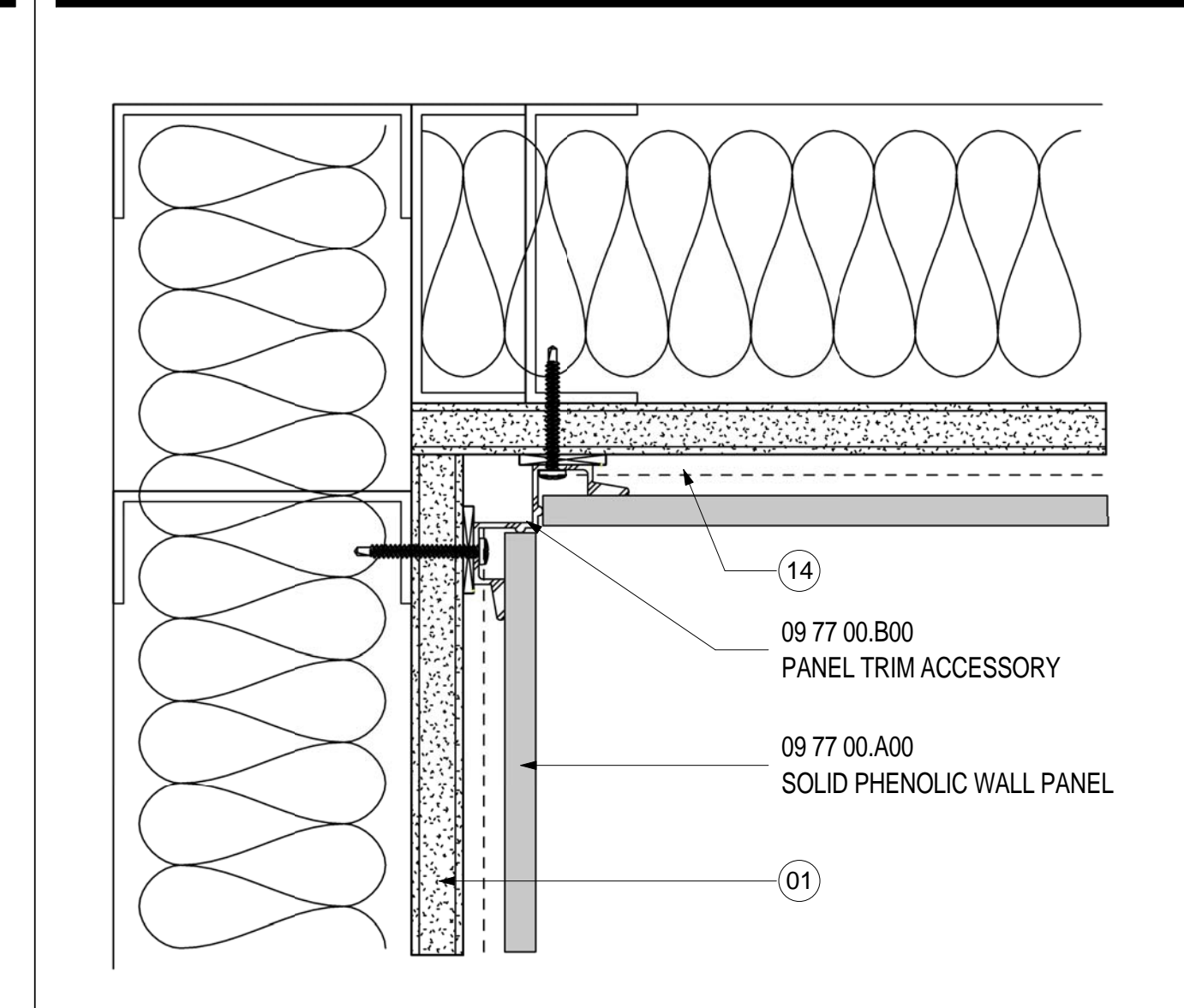
JAMB- DOOR TYPE A1- TRESPA
SCALE: 3" = 1'-0"



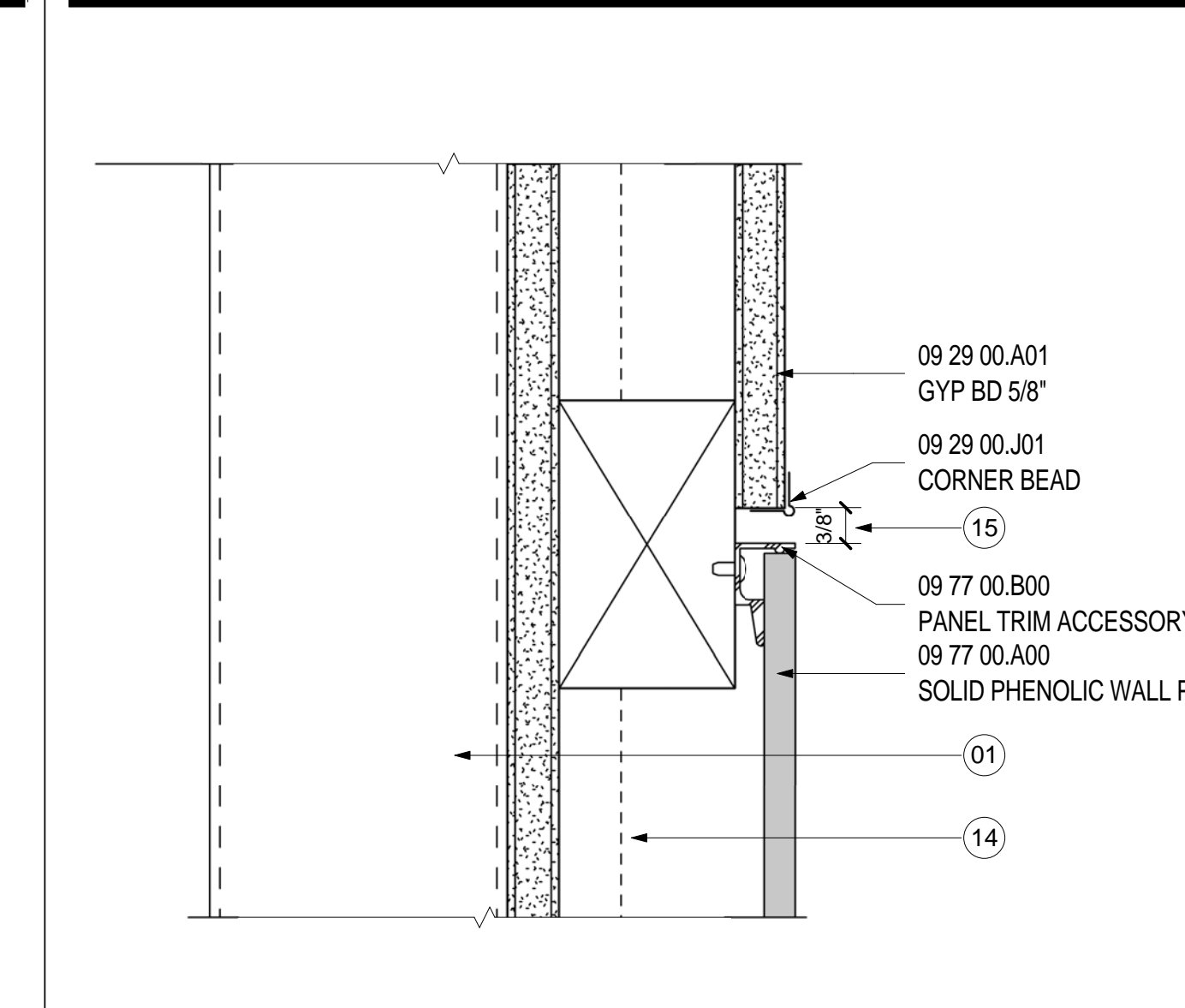
TRESPA EDGE
SCALE: 6" = 1'-0"



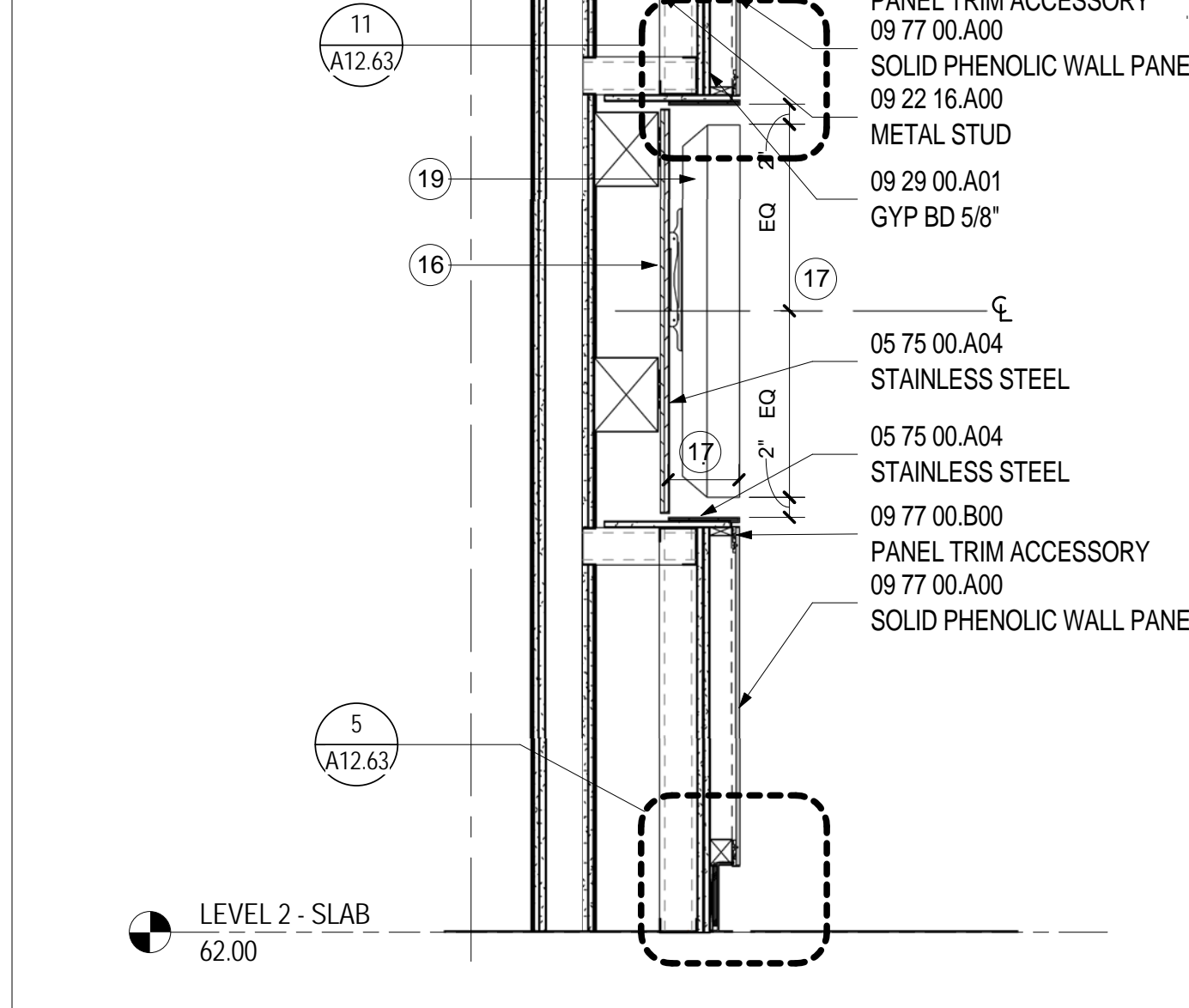
PLAN @ GLASS TILE/SL
SCALE: 6" = 1'-0"



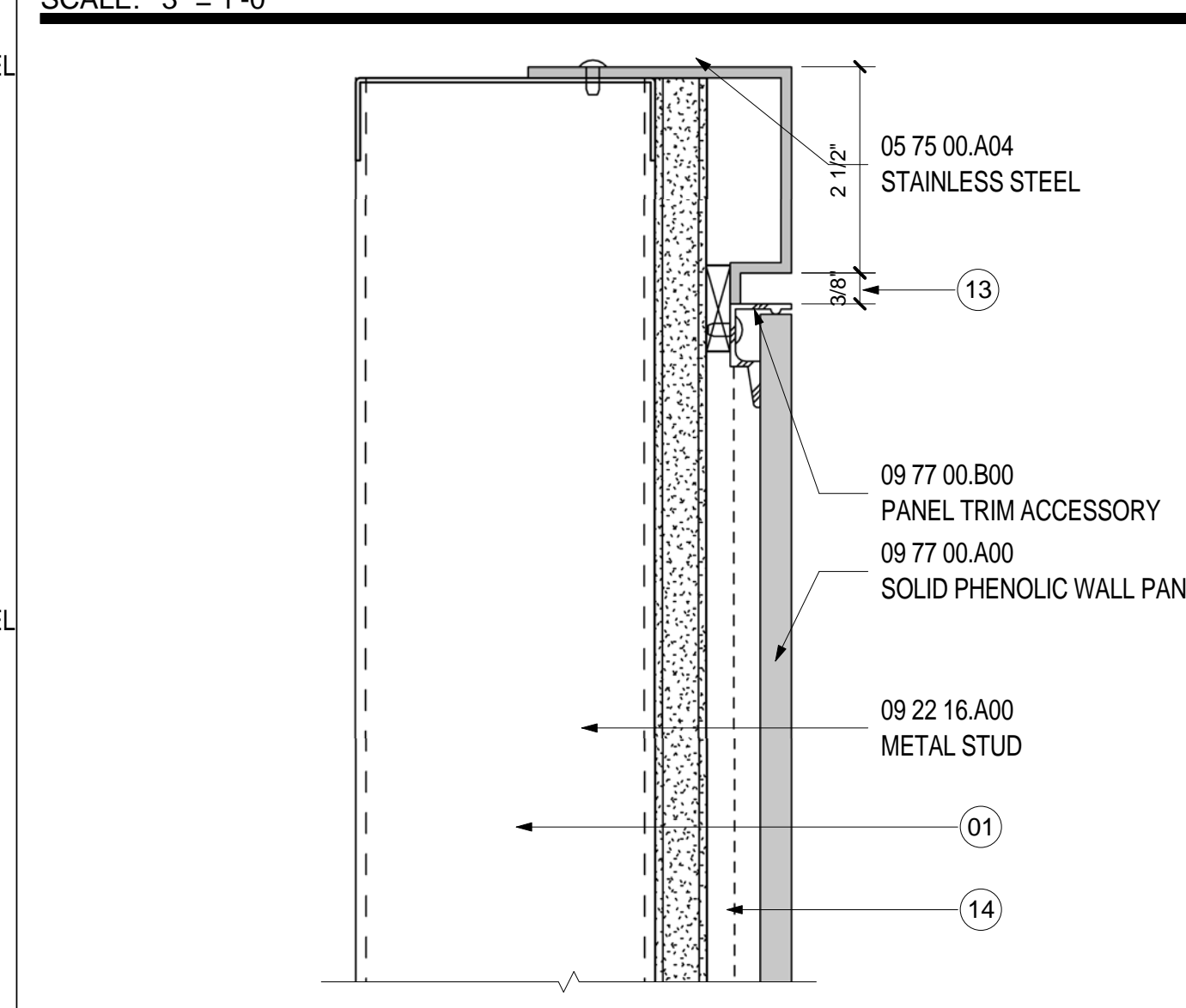
TRESPA INSIDE CORNER
SCALE: 6" = 1'-0"



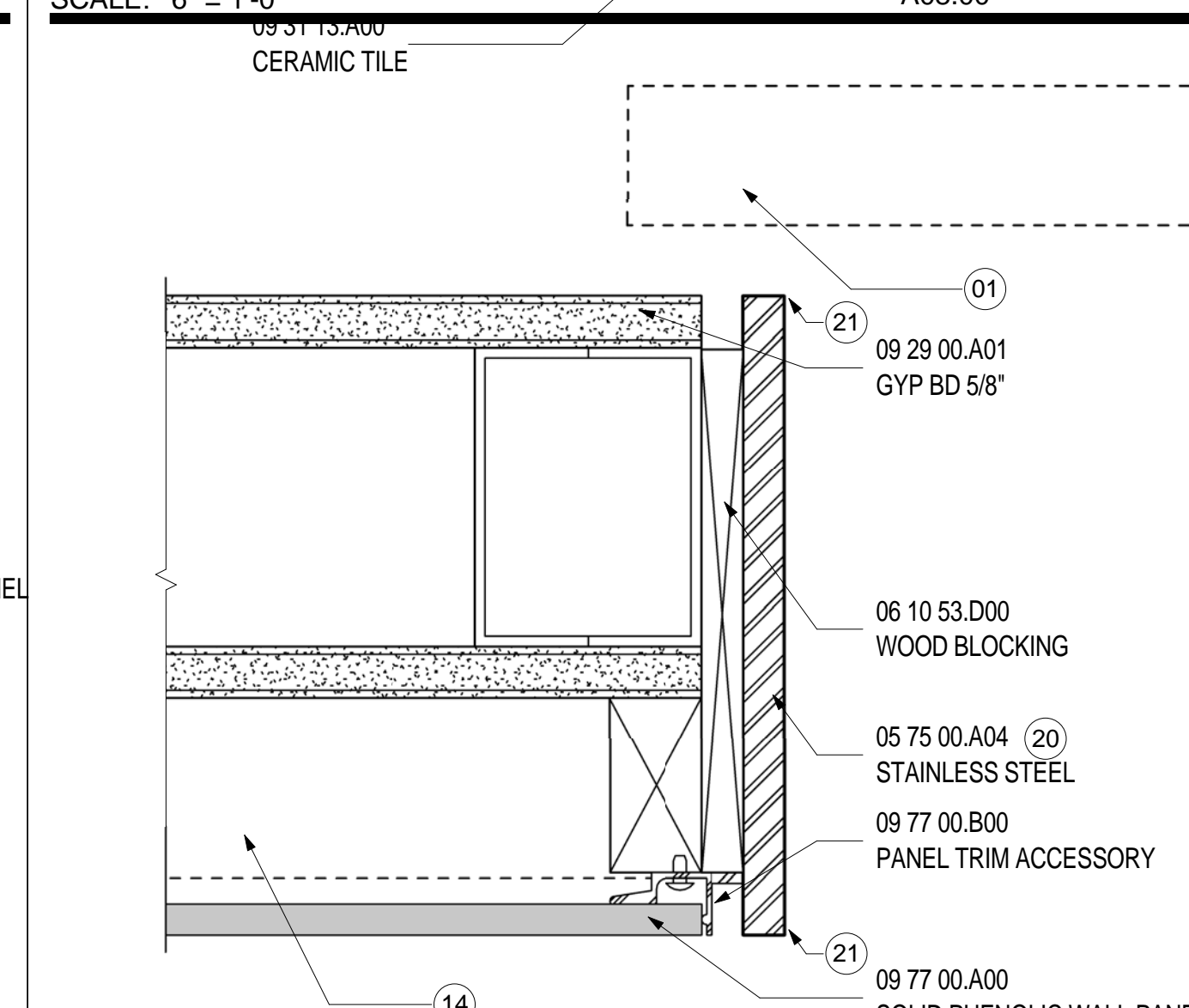
TRESPA/GYP EDGE DETAIL
SCALE: 6" = 1'-0"



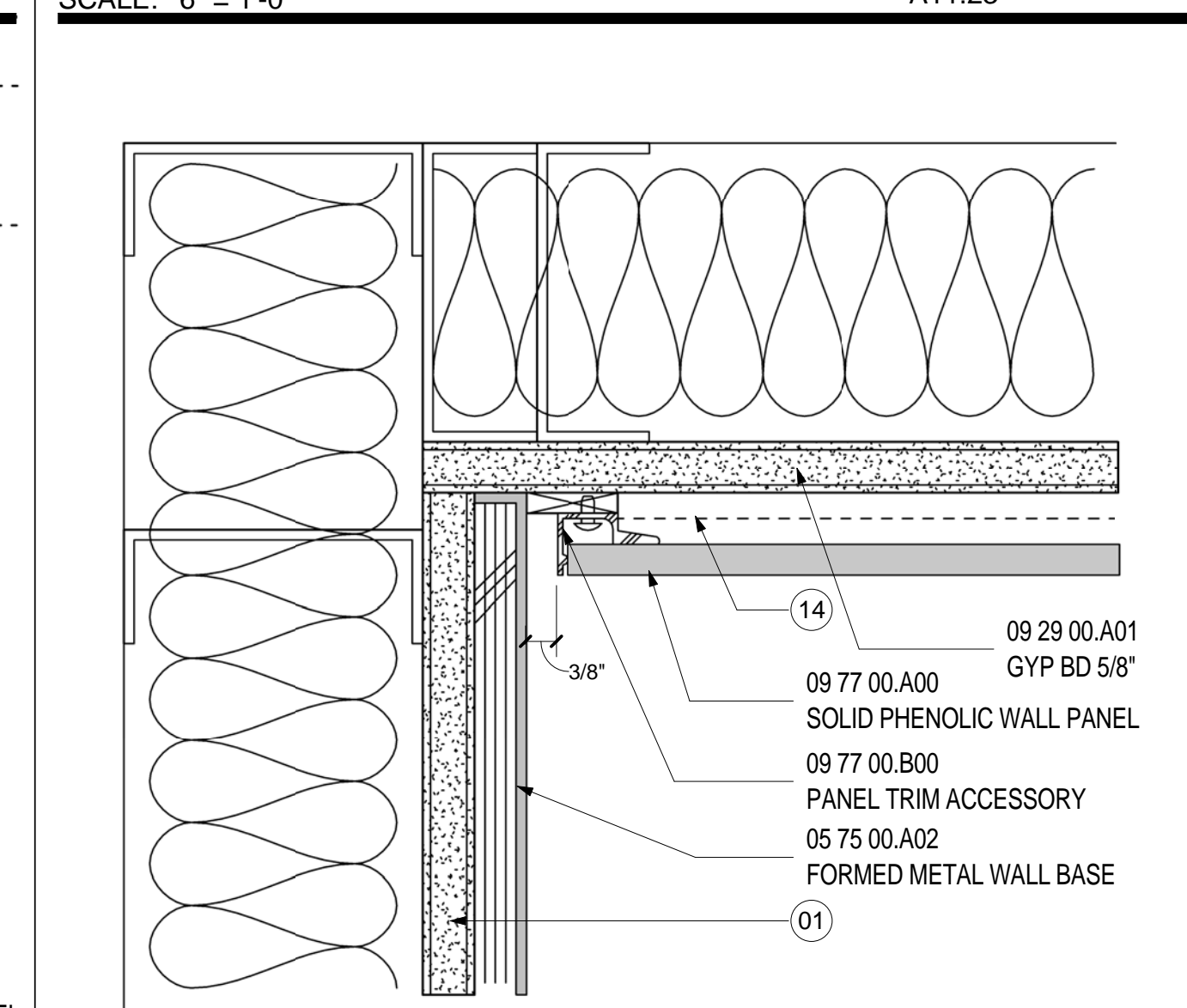
FIDS AT TRESPA WALL
SCALE: 3/4" = 1'-0"



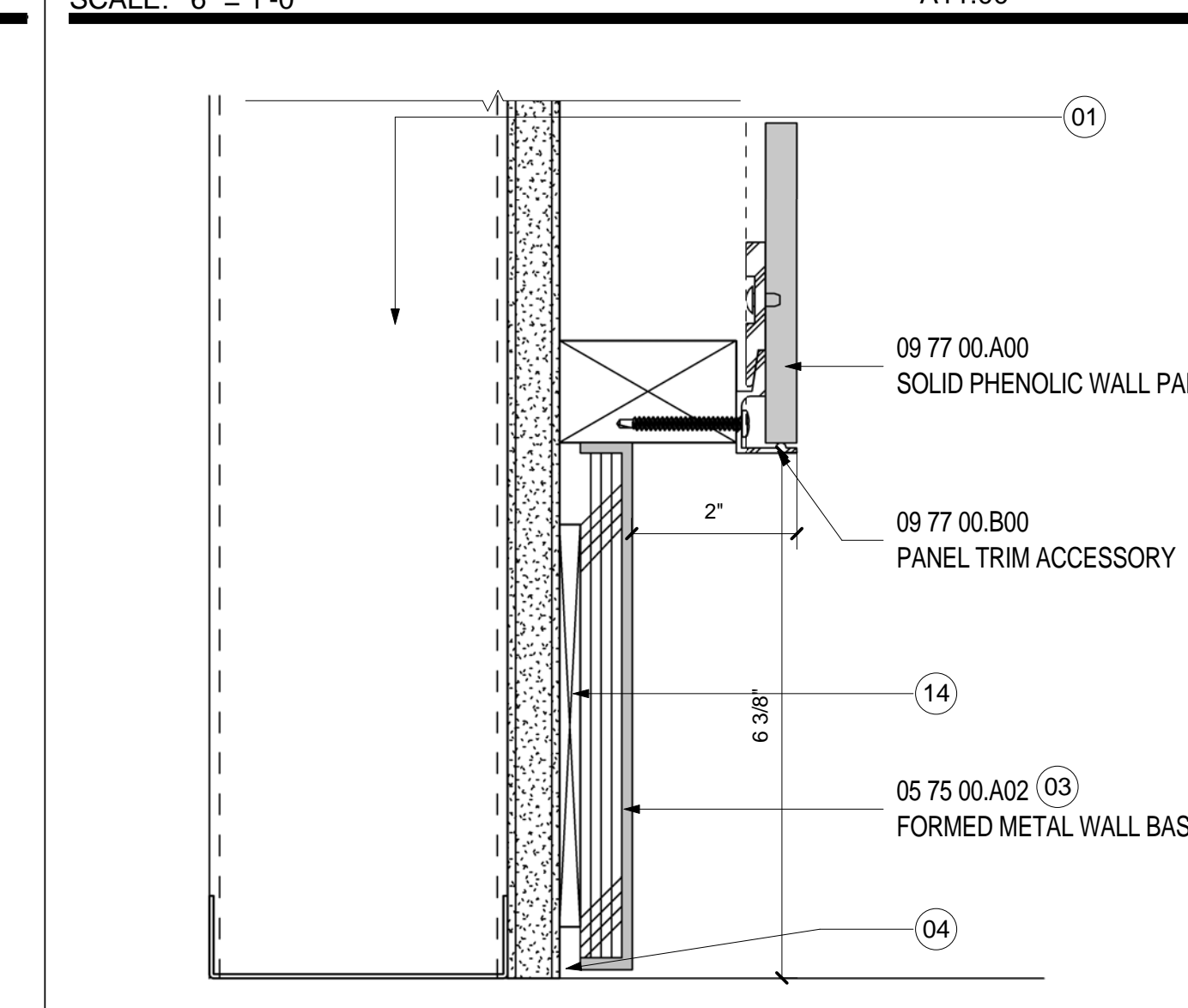
TRESPA EDGE
SCALE: 6" = 1'-0"



TRESPA EDGE @ CONCESSIONS
SCALE: 6" = 1'-0"



TRESPA/ METAL INSIDE CORNER
SCALE: 6" = 1'-0"



TRESPA EDGE - RECESSED METAL BASE
SCALE: 6" = 1'-0"

SHEET NOTES

- 01 SCHEDULED PARTITION, RE: A02 SERIES FOR CONSTRUCTION PLAN AND PARTITION TYPES.
- 02 SCHEDULED CEILING, RE: A04 SERIES FOR REFLECTED CEILING PLANS
- 03 SCHEDULED BASE
- 04 PROVIDE BLACK FILLER TRIM TO CONCEAL GYP BOARD
- 05 HAIRLINE DIME JOINT, BY PANEL SUPPLIER
- 07 REFER TO FINISH PLAN FOR FINISH ON THIS SIDE
- 09 SCHEDULED DOOR, RE: A00.30 FOR DOOR SCHEDULE
- 10 SCHEDULED ADJACENT PARTITION WHERE OCCURS, RE: CONSTRUCTION PLAN
- 11 REFER TO FINISH PLAN DETAILS FOR FINISHES.
- 12 LINE OF FRAME HEADER ABOVE
- 13 STAINLESS STEEL REVEAL
- 14 BLOCKING AS REQUIRED COORDINATE WITH BASE DETAIL
- 15 PAINTED REVEAL TO MATCH WALL FINISH
- 16 COORDINATE MOUNTING AND METAL PLATE BLOCKING AS REQUIRED.
- 17 COORDINATE DEPTH WITH SELECTED SCREEN AND MOUNTING BRACKET
- 18 GATE INFORMATION DISPLAY SYSTEM, RE: TO POWER AND COMMUNICATION PLANS AND SCHEDULE FOR EQUIPMENT SPECIFICATIONS. COORDINATE WITH ELECTRICAL AND COMM DRAWINGS. NO VISIBLE CORDS OR WIRING.
- 19 FLIGHT INFORMATION DISPLAY SYSTEM, RE: TO POWER AND COMMUNICATION PLANS AND SCHEDULE FOR EQUIPMENT SPECIFICATIONS. COORDINATE WITH ELECTRICAL AND COMM DRAWINGS. NO VISIBLE CORDS OR WIRING.
- 20 NO EXPOSED FASTENERS
- 21 EASE EDGE OF STAINLESS STEEL PLATE

Portland International Jetport
1001 Westbrook Street
Portland, Maine 04102

Gensler
2020 K Street, Northwest
Suite 200
Washington DC 20006
Telephone 202.721.5200
Facsimile 202.872.8587

Date	Description
12/03/08	75% CONSTRUCTION DOCUMENTS
01/23/09	95% CONSTRUCTION DOCUMENTS
10/26/09	ISSUED FOR PERMIT
145 09/01/11	ISSUED FOR CONSTRUCTION

Seal/Signature

Project Name
PJM Terminal Enhancement

Project Number
09.6395.000

Description
INTERIOR DETAILS

Scale
As indicated

A12.63

© 2009 Gensler