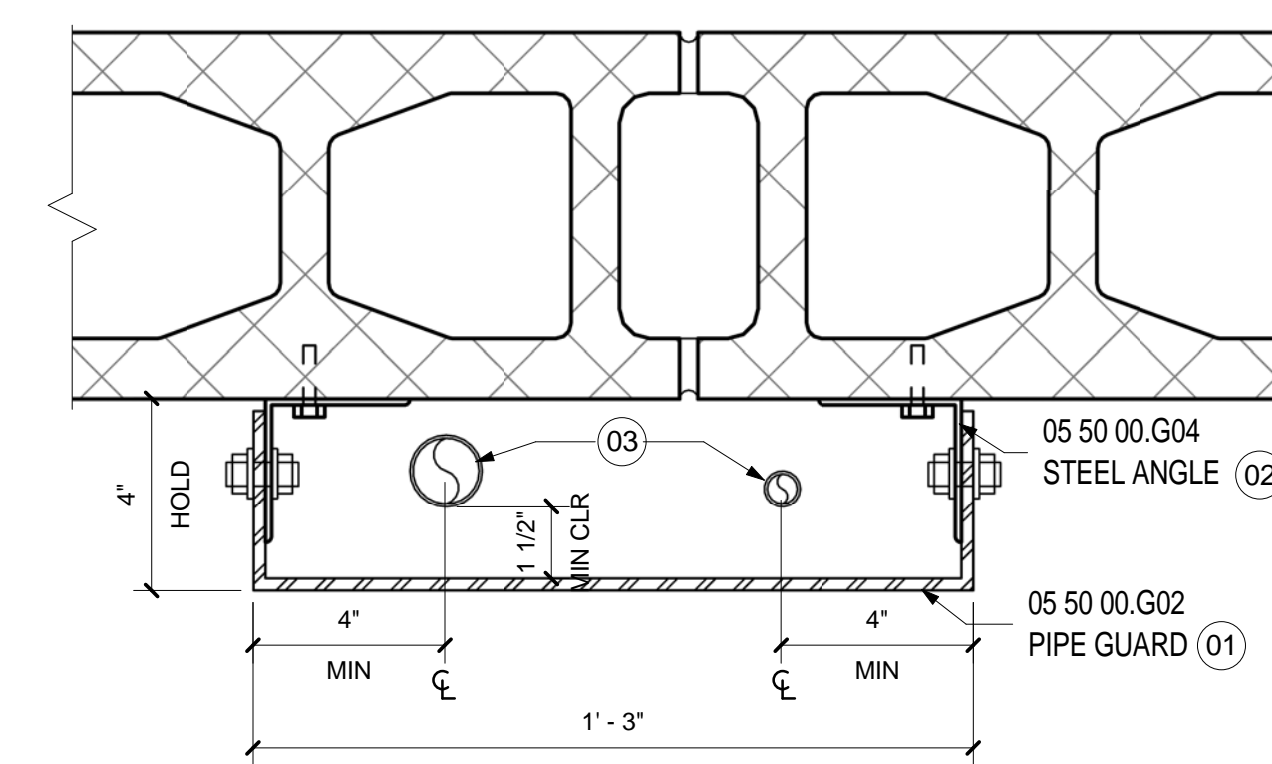
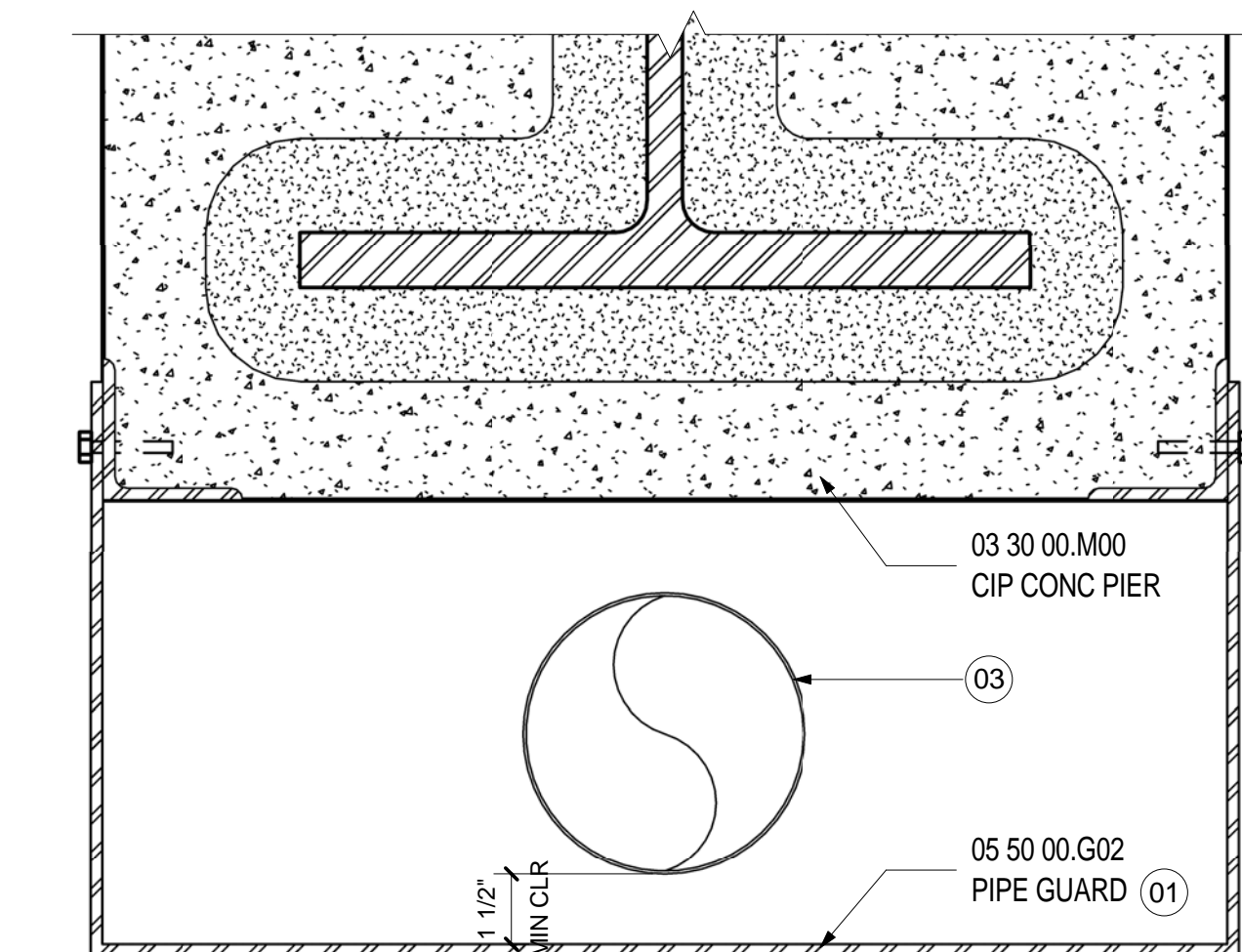


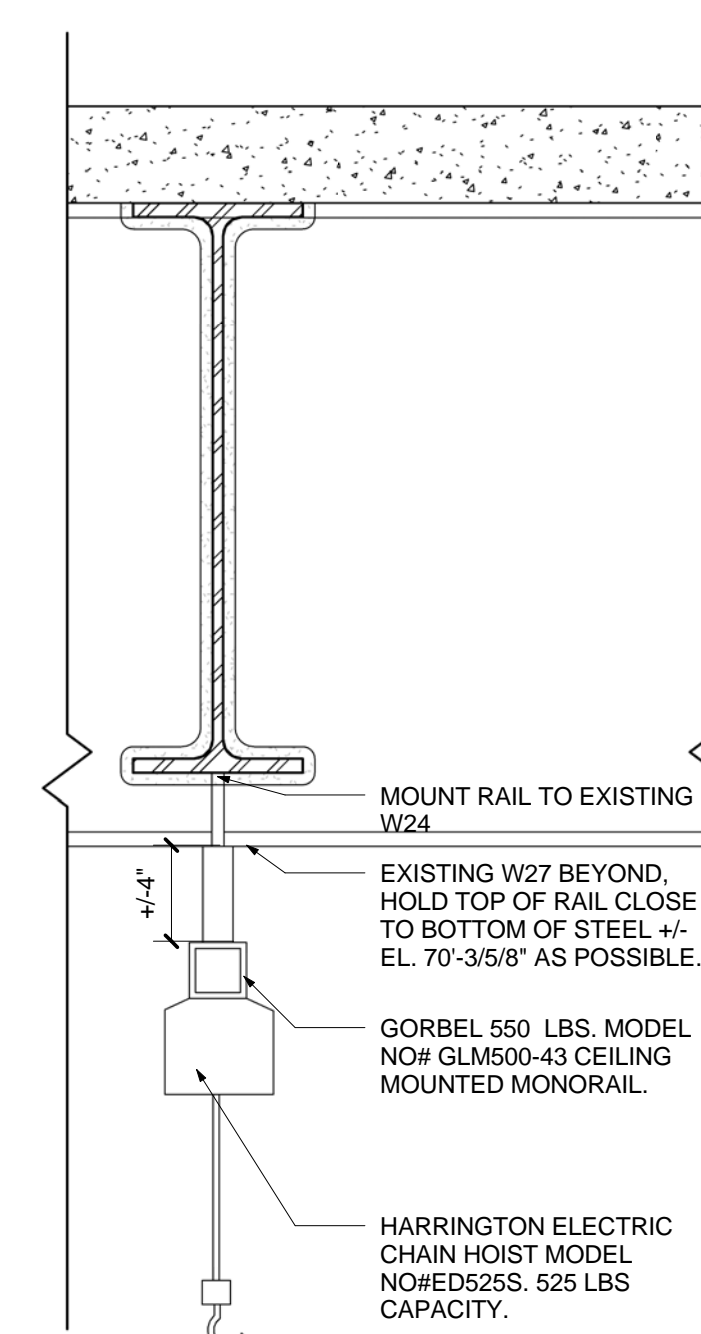
ELEVATION AT PIPE GUARD
SCALE: 1 1/2" = 1'-0"



PLAN DETAIL @ WALL PIPE GUARD
SCALE: 3" = 1'-0"



PLAN DETAIL @ COLUMN PIPE GUARD
SCALE: 3" = 1'-0"



MONORAIL DETAIL
SCALE: 1 1/2" = 1'-0"

SHEET NOTES

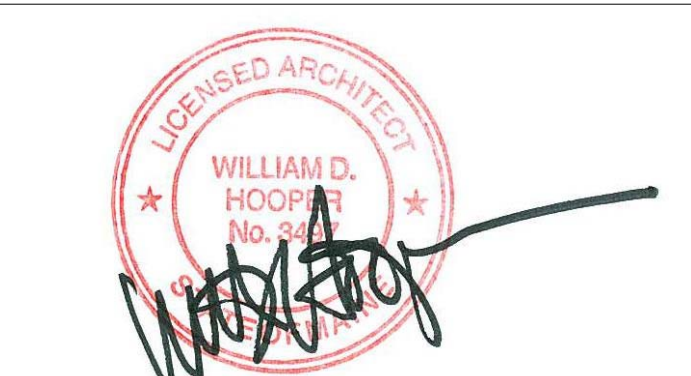
- 01 1/4" STEEL PLATE x 1'-6" H. SECURED TO WALL AS REQUIRED. HOLD BOTTOM OF PLATE AT 12" AFF.
- 02 3"x3"x1/4" STEEL ANGLE 1'-6"H. SECURED TO WALL
- 03 HOLD PIPES TIGHT TO WALL OR COLUMN. RE: MEP DRAWINGS

Portland International Jetport
1001 Westbrook Street
Portland, Maine 04102

Gensler
2020 K Street, Northwest
Suite 200
Washington DC 20006
Telephone 202.721.5200
Facsimile 202.872.8587

| Date | Description |
|--------------|-------------------------|
| 2 11/12/09 | ADDENDUM #2 |
| 145 09/01/11 | ISSUED FOR CONSTRUCTION |

Seal/Signature



Project Name
PWM Terminal Enhancement

Project Number
09.6395.000

Description
DETAILS - BAGGAGE

Scale
As indicated

A12.16

© 2009 Gensler

GENERAL NOTES