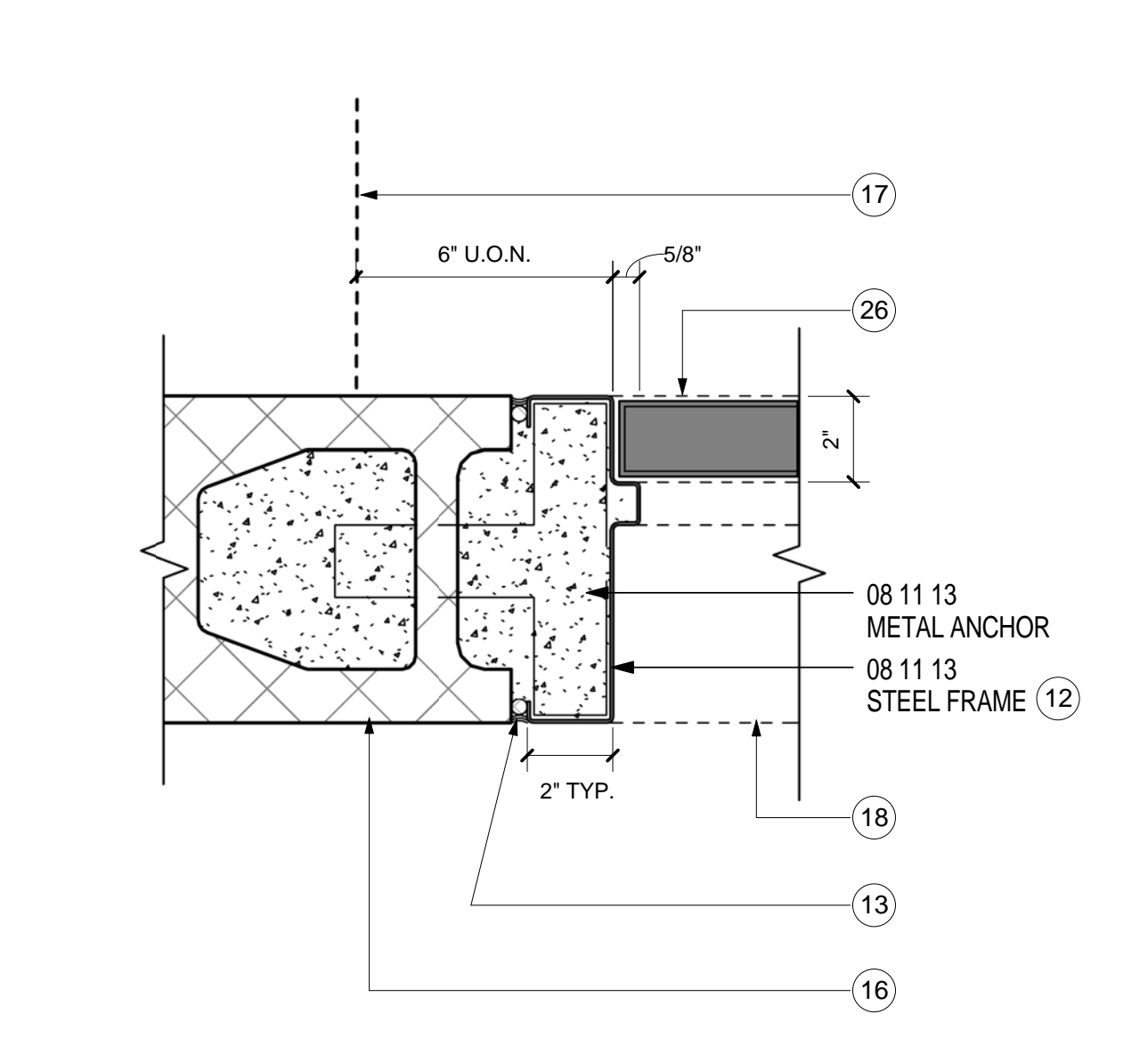
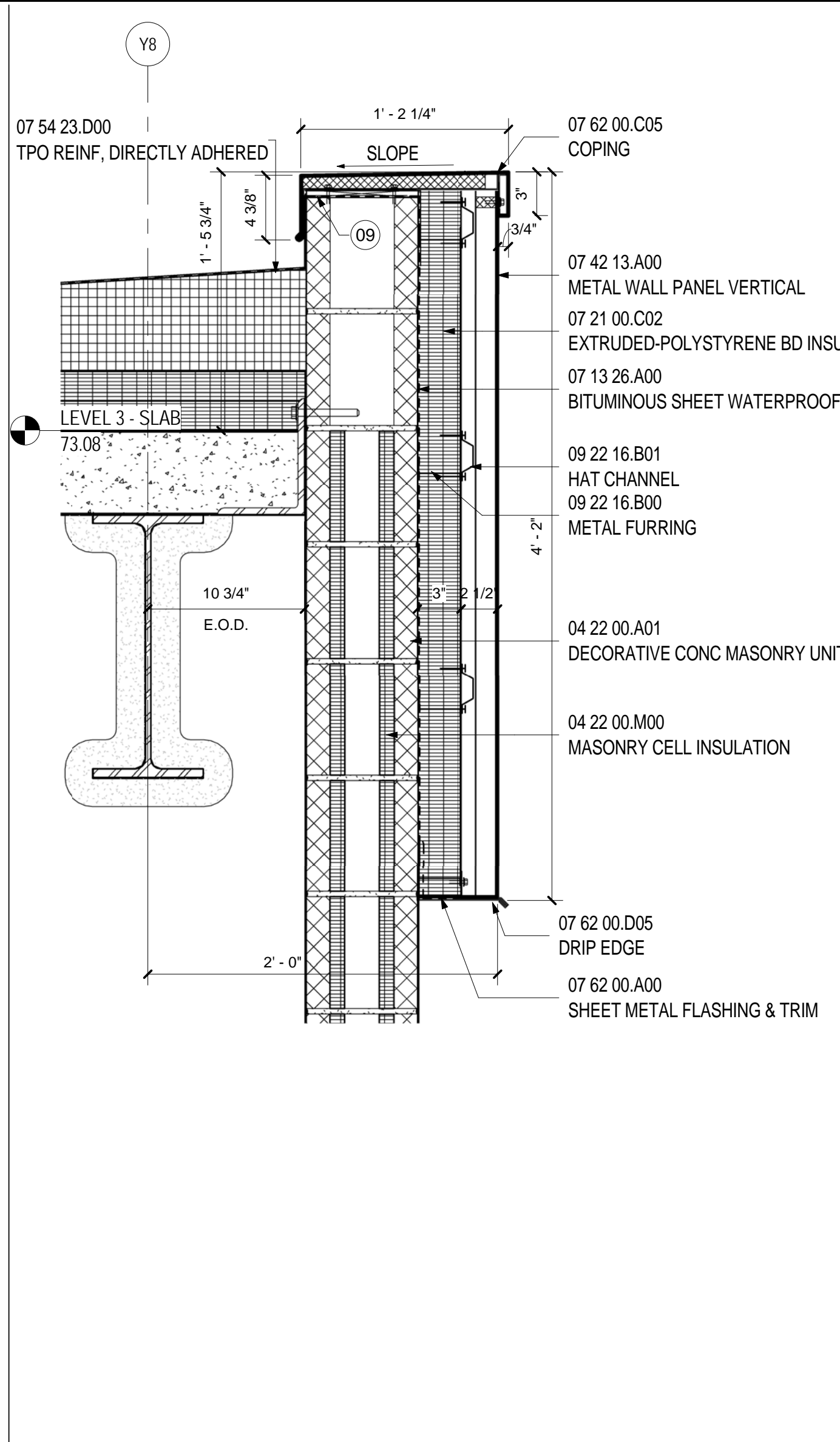


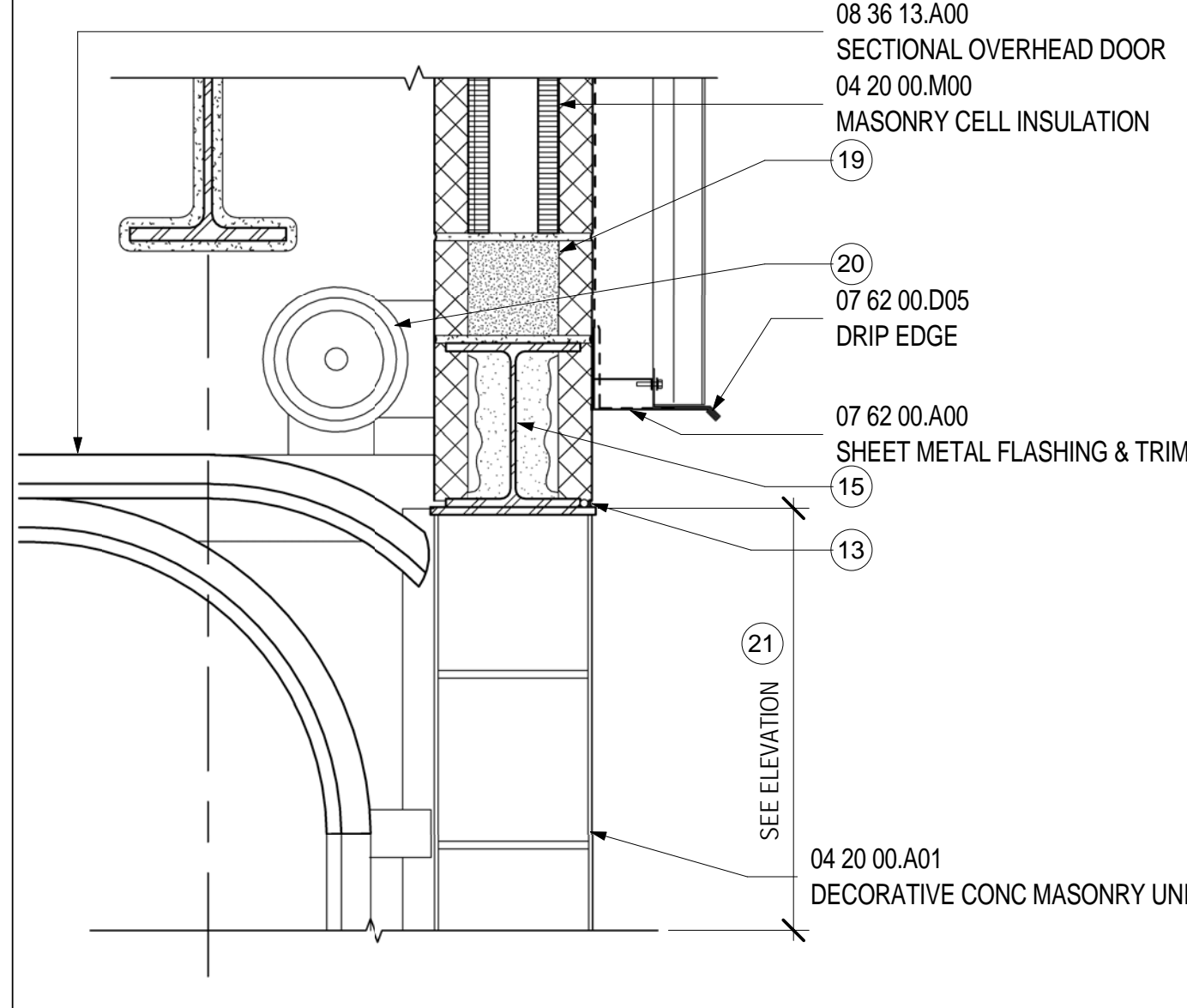
**HEAD- DOOR TYPE A AT CMU- EXT.** 11  
SCALE: 3" = 1'-0"



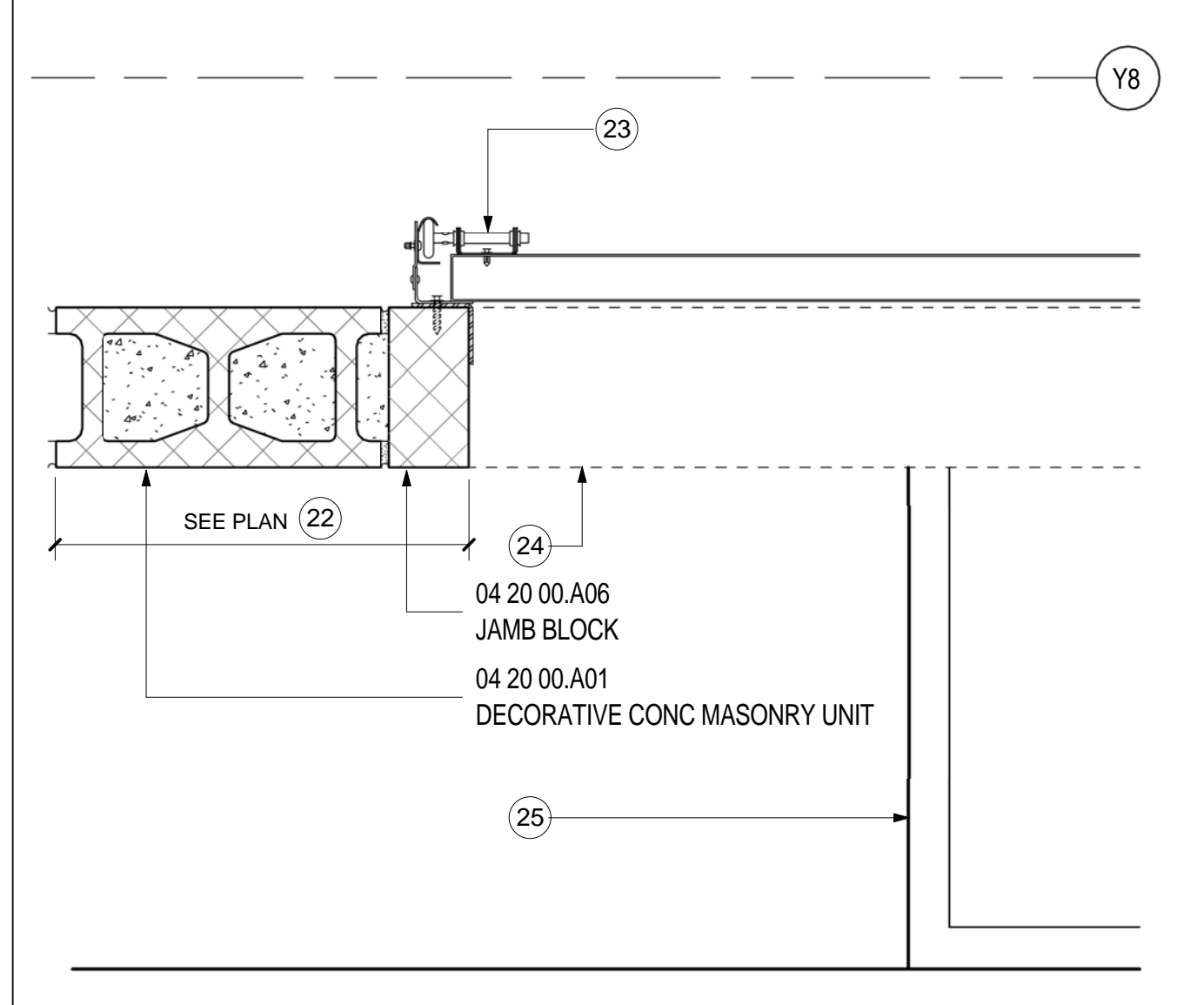
**JAMB- DOOR TYPE A AT CMU- EXT.** 12  
SCALE: 3" = 1'-0"



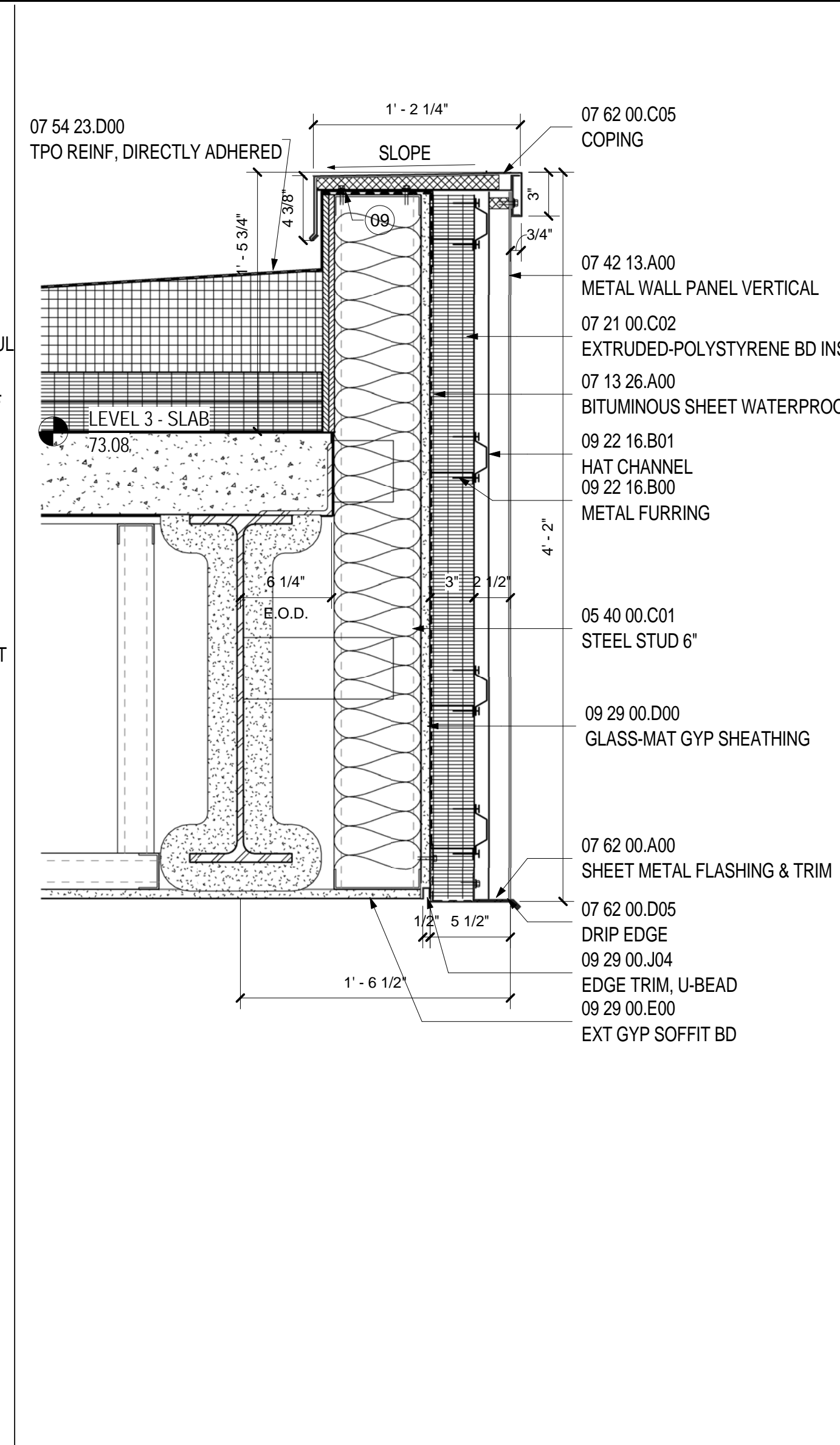
**WALL TYPE E @ LOW ROOF** 7  
SCALE: 1 1/2" = 1'-0"



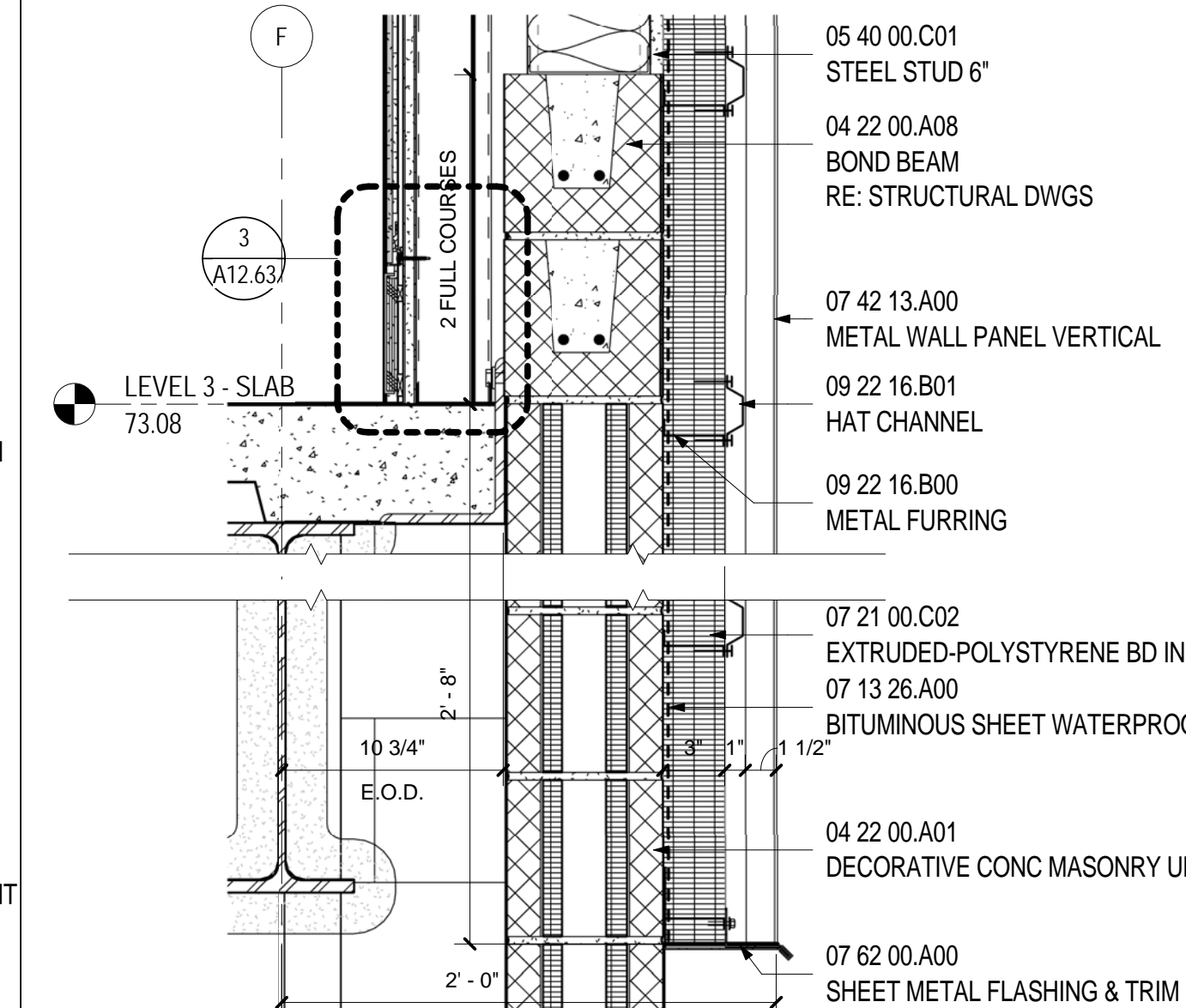
**HEAD- DOOR TYPE N AT CMU** 8  
SCALE: 1 1/2" = 1'-0"



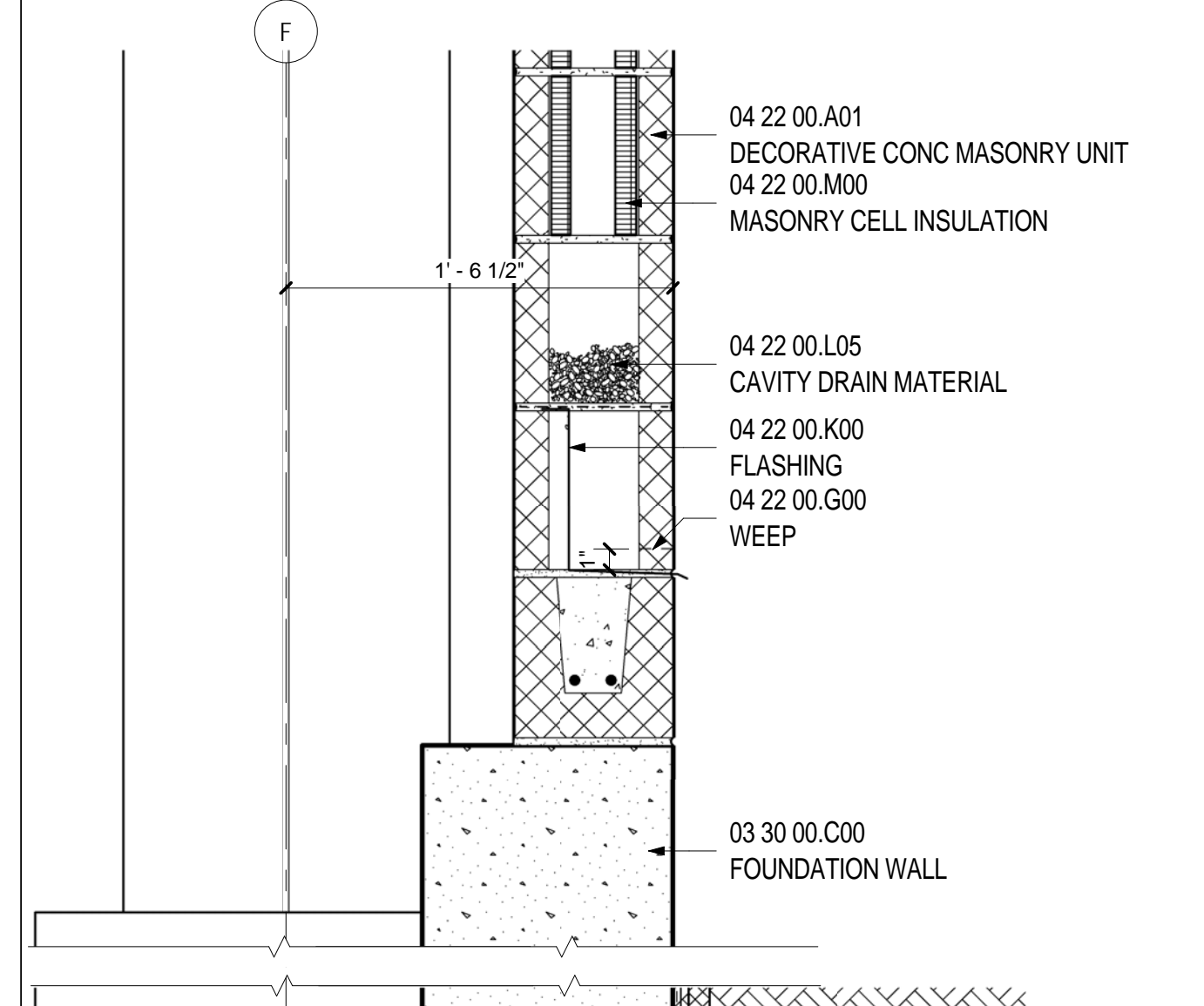
**JAMB- DOOR TYPE N AT CMU** 9  
SCALE: 1 1/2" = 1'-0"



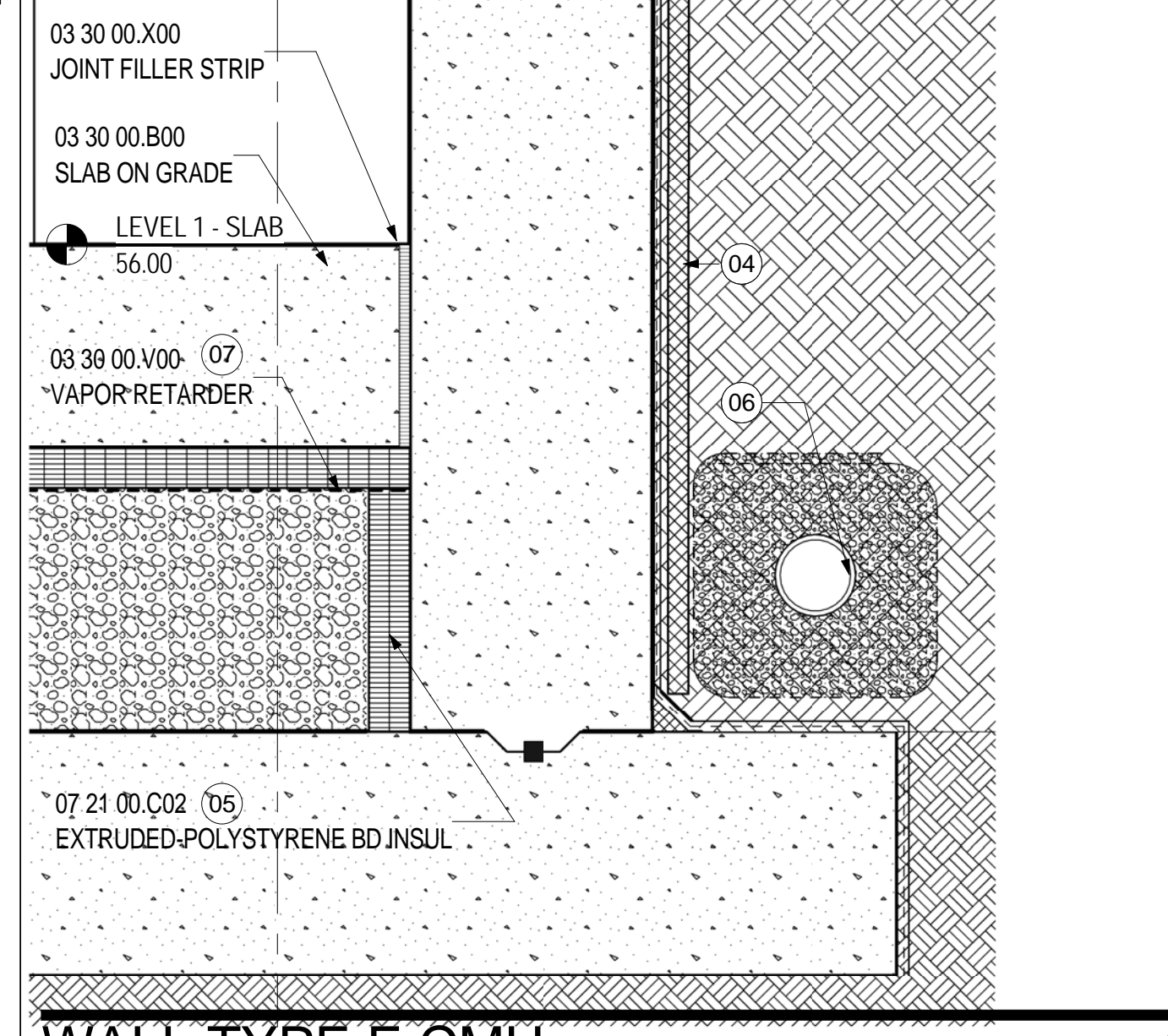
**WALL TYPE E SOFFIT - SECTION A** 4  
SCALE: 1 1/2" = 1'-0"



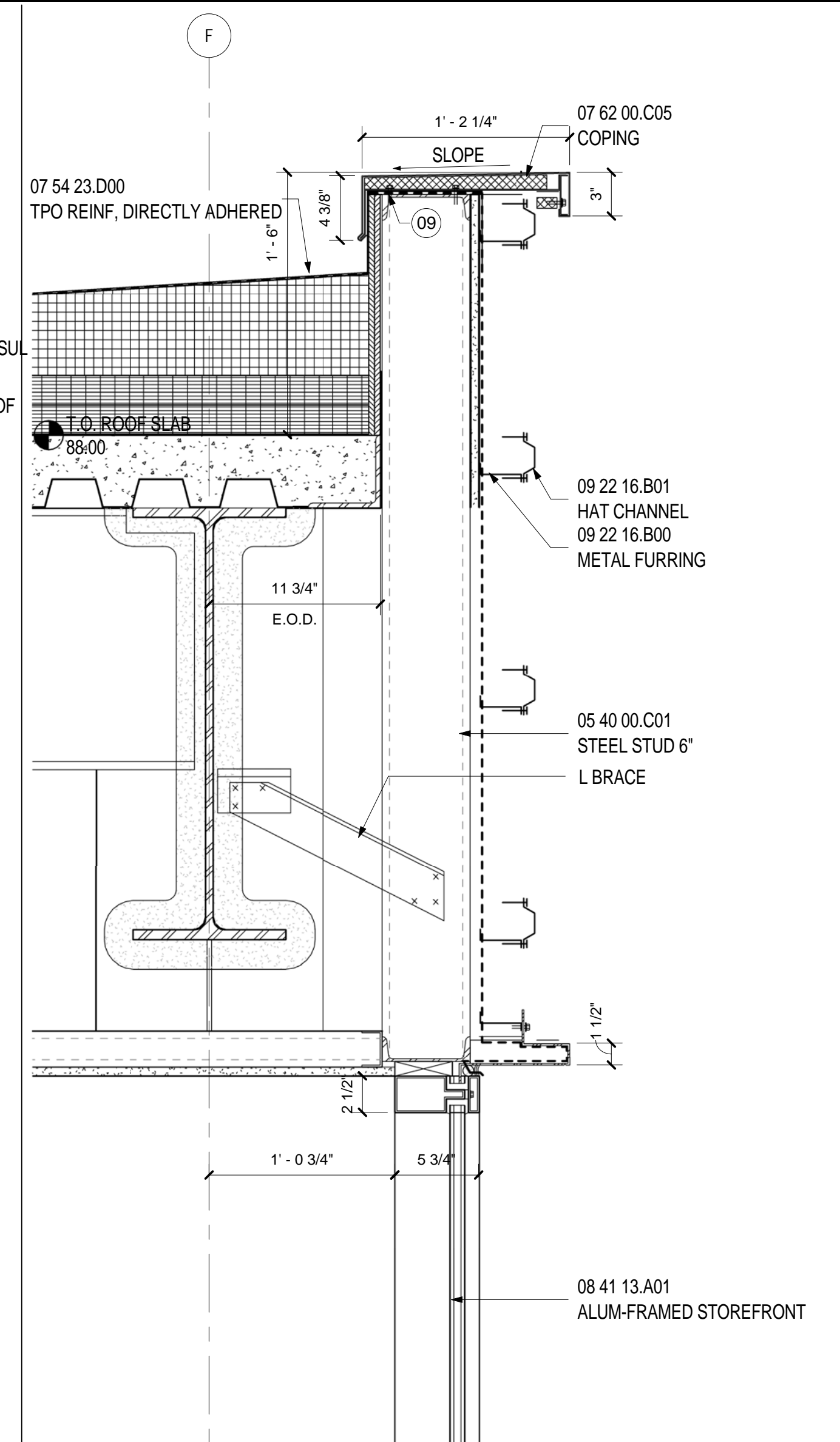
**WALL TYPE E - SECTION @ LEVEL 3** 5  
SCALE: 1 1/2" = 1'-0"



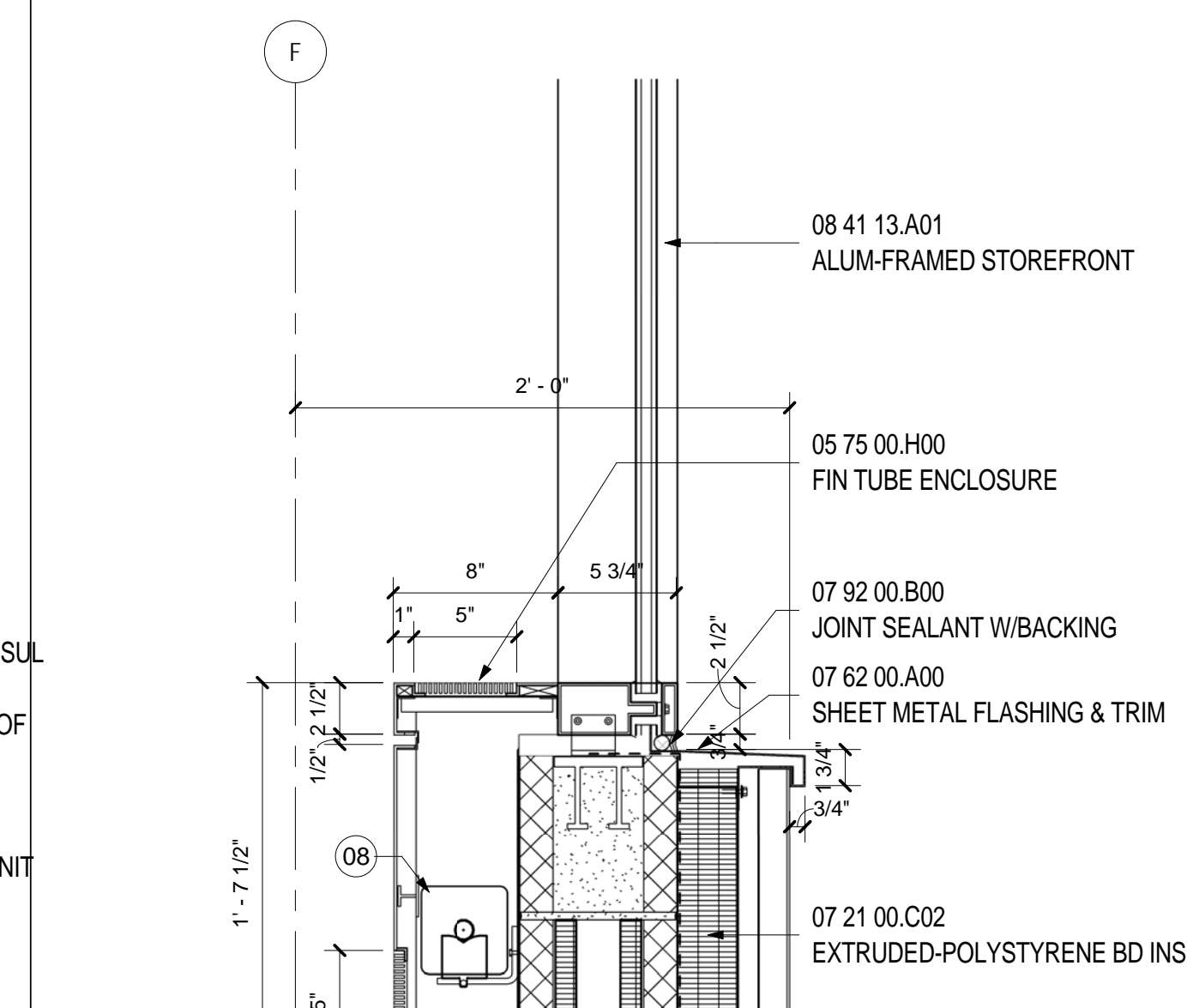
**WALL TYPE E CMU** 6  
SCALE: 1 1/2" = 1'-0"



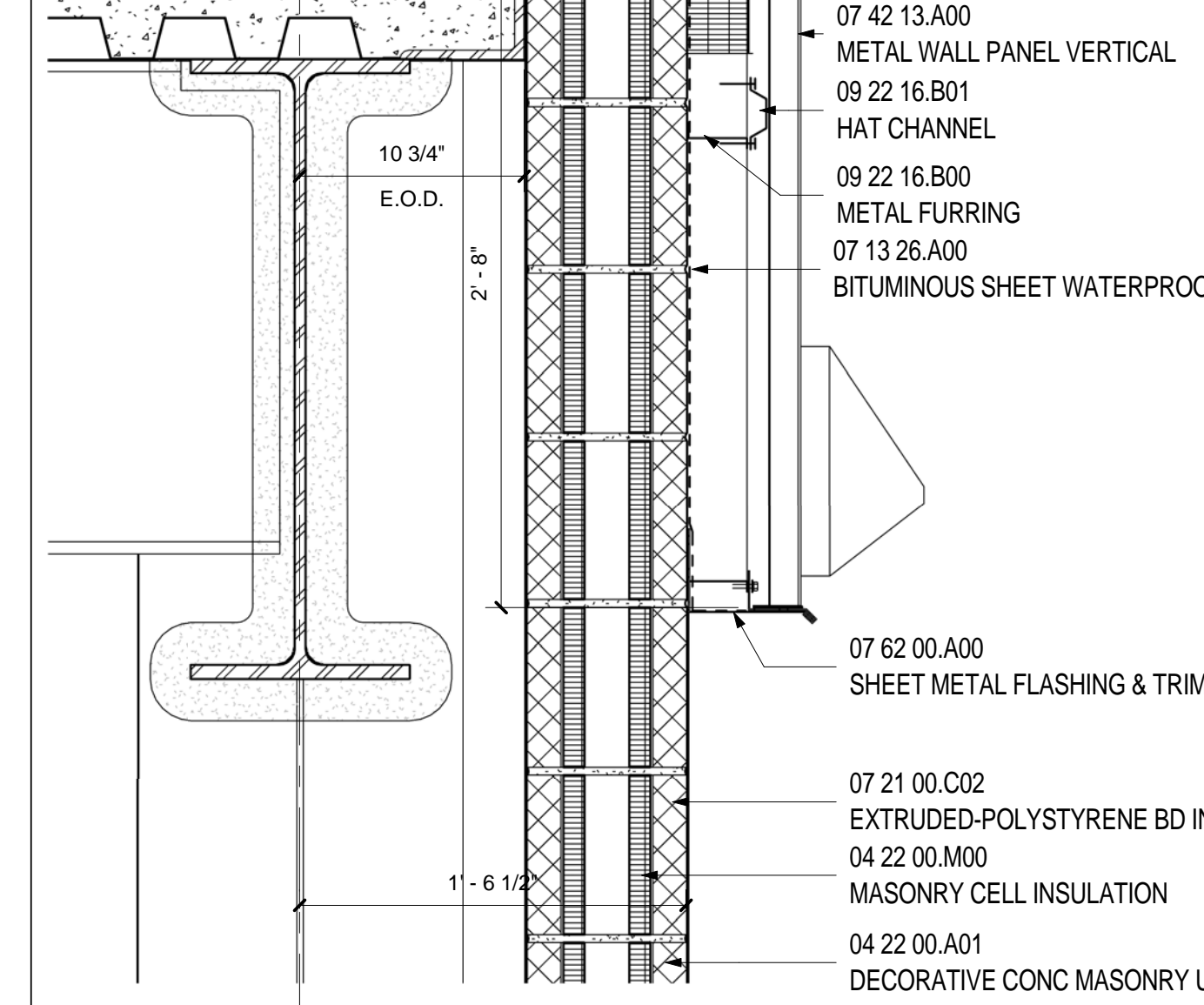
**WALL TYPE E SILL - SECTION B** 3  
SCALE: 1 1/2" = 1'-0"



**WALL TYPE E PARAPET** 1  
SCALE: 1 1/2" = 1'-0"



**WALL TYPE E SILL - SECTION A** 2  
SCALE: 1 1/2" = 1'-0"



**WALL TYPE E SILL - SECTION B** 3  
SCALE: 1 1/2" = 1'-0"

- SHEET NOTES**
- 01 TAPE BITUMINOUS SHEET WATERPROOFING TO CURTAIN WALL FOR CONTINUOUS WATER/VAPOR/AIR BARRIER.
  - 02 COORDINATE REQUIRED INSTALLATION CLEARANCES WITH REVOLVING DOOR MANUFACTURER
  - 03 PERFORATED PVC DRAIN PIPE, RE: CIVIL & STRUCTURAL DRAWINGS
  - 04 DRAINAGE BOARD, RE: CIVIL & STRUCTURAL DRAWINGS
  - 05 PROVIDE 2" RIGID INSULATION UNDER ALL SLABS ON GRADE.
  - 06 PERIMETER DRAIN PIPE, RE: CIVIL & STRUCTURAL DRAWINGS
  - 07 PROVIDE VAPOR BARRIER UNDER ALL SLABS ON GRADE, RE: STRUCTURAL DRAWINGS FOR MORE INFORMATION.
  - 08 FIN TUBE, RE: MECHANICAL DRAWINGS FOR MORE INFORMATION.
  - 09 WRAP TPO MEMBRANE ROOFING OVER BLOCKING UNDER COPING.
  - 10 WEATHERPROOF TOP COVER BELOW CURBSIDE CANOPY ENGINEERED TO SUPPORT SNOW LOAD AT DOOR 1510A ONLY. PROVIDE 1/2" STANDARD DUST COVERS AT DOORS 1510C AND 1510E.
  - 11 ALUMINUM DOOR CLADDED WITH METAL PANEL TO MATCH ADJACENT
  - 12 GROUT SOLID
  - 13 BACKER ROD AND SEALANT
  - 14 REFER TO ELEVATIONS AND SECTIONS FOR DATUMS.
  - 15 SEE STRUCTURAL DRAWING FOR LINTEL INFORMATION
  - 16 REFER TO WALL TYPE
  - 17 LINE OF ADJACENT PARTITION WHERE OCCURS
  - 18 LINE OF DOOR FRAME ABOVE
  - 19 COORDINATE CMU HEIGHT AT OPENING WITH LINTEL. REFER TO STRUCTURAL DRAWINGS.
  - 20 COORDINATE CMU HEIGHT AT OPENING WITH LINTEL. REFER TO STRUCTURAL DRAWINGS.
  - 21 VERIFY OPENING, CLEARANCE BELOW STRUCTURE WITH COILING DOOR HOUSING
  - 22 VERIFY AND COORDINATE DOOR SIZE AND REQUIRED CLEARANCES WITH DOOR WIDTH PRIOR TO INSTALLATION OF LINTEL
  - 23 PROVIDE 3" FACTORY STEEL JAMB WITH WITH 1" OVERLAP
  - 24 LINE OF LINTEL ABOVE
  - 25 LINE OF LOADING DOCK LEVELER
  - 26 SCHEDULED DOOR. REFER TO DOOR SCHEDULE FOR INFORMATION.

**Portland International Jetport**  
1001 Westbrook Street  
Portland, Maine 04102

**Gensler**  
2020 K Street, Northwest  
Suite 200  
Washington DC 20006  
Telephone 202.721.5200  
Facsimile 202.872.8587

Date	Description
12/03/08	75% CONSTRUCTION DOCUMENTS
01/23/09	95% CONSTRUCTION DOCUMENTS
10/26/09	ISSUED FOR PERMIT
145 09/01/11	ISSUED FOR CONSTRUCTION

Seal/Signature

**Project Name**  
PJM Terminal Enhancement

**Project Number**  
09.6395.000

**Description**  
SECTION DETAILS - WALL TYPE E

**Scale**  
As indicated

**A12.14**

© 2009 Gensler