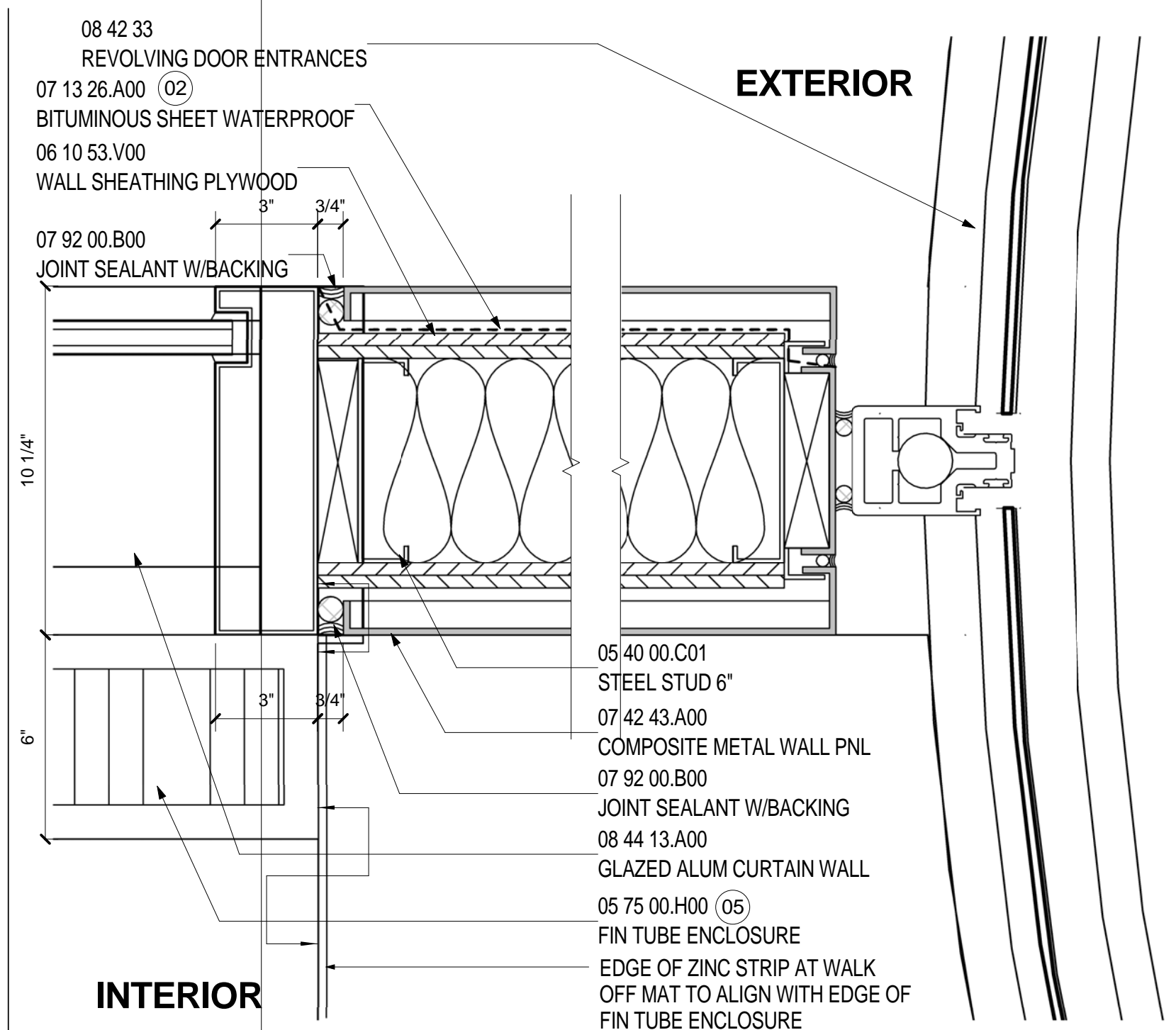
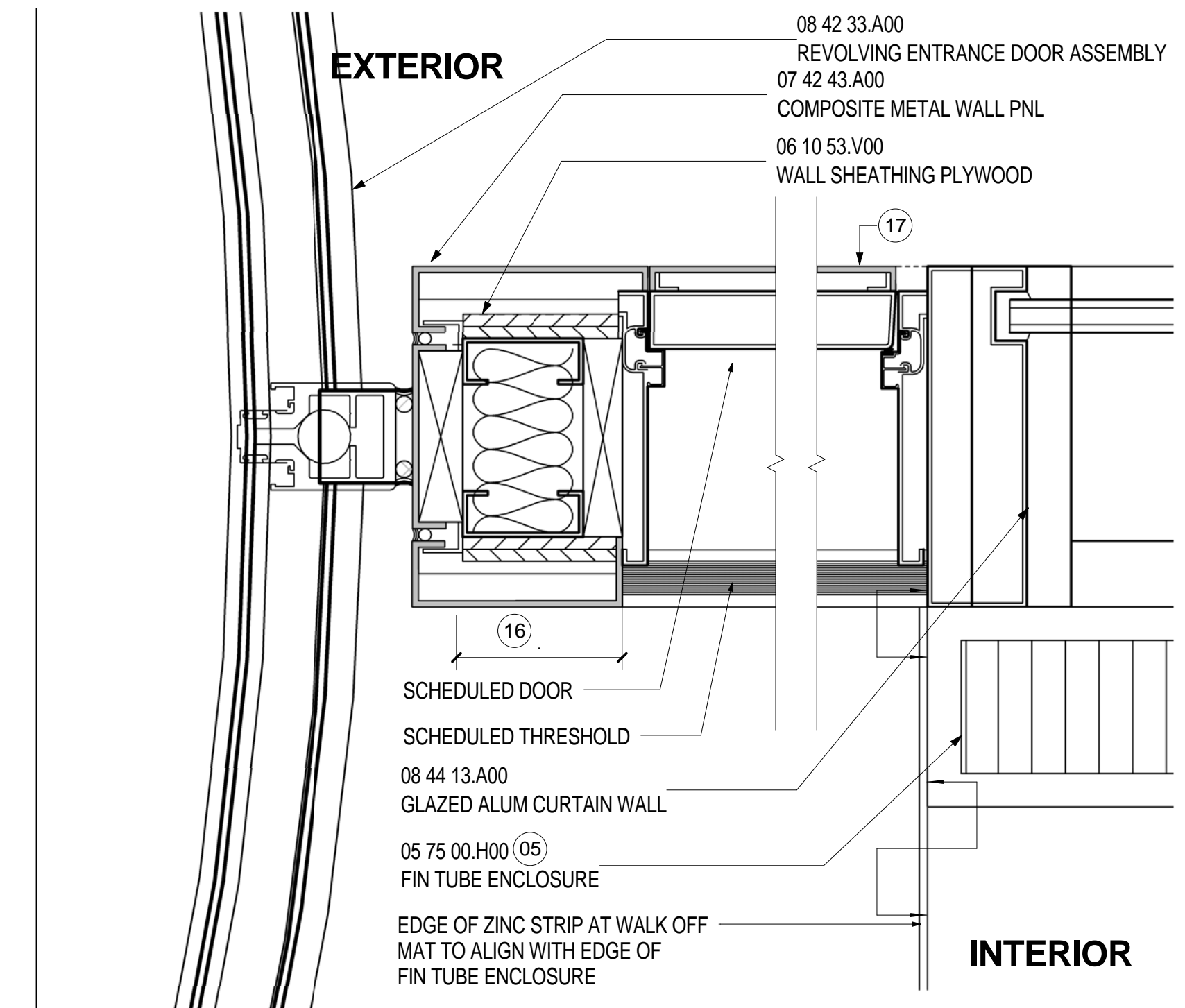


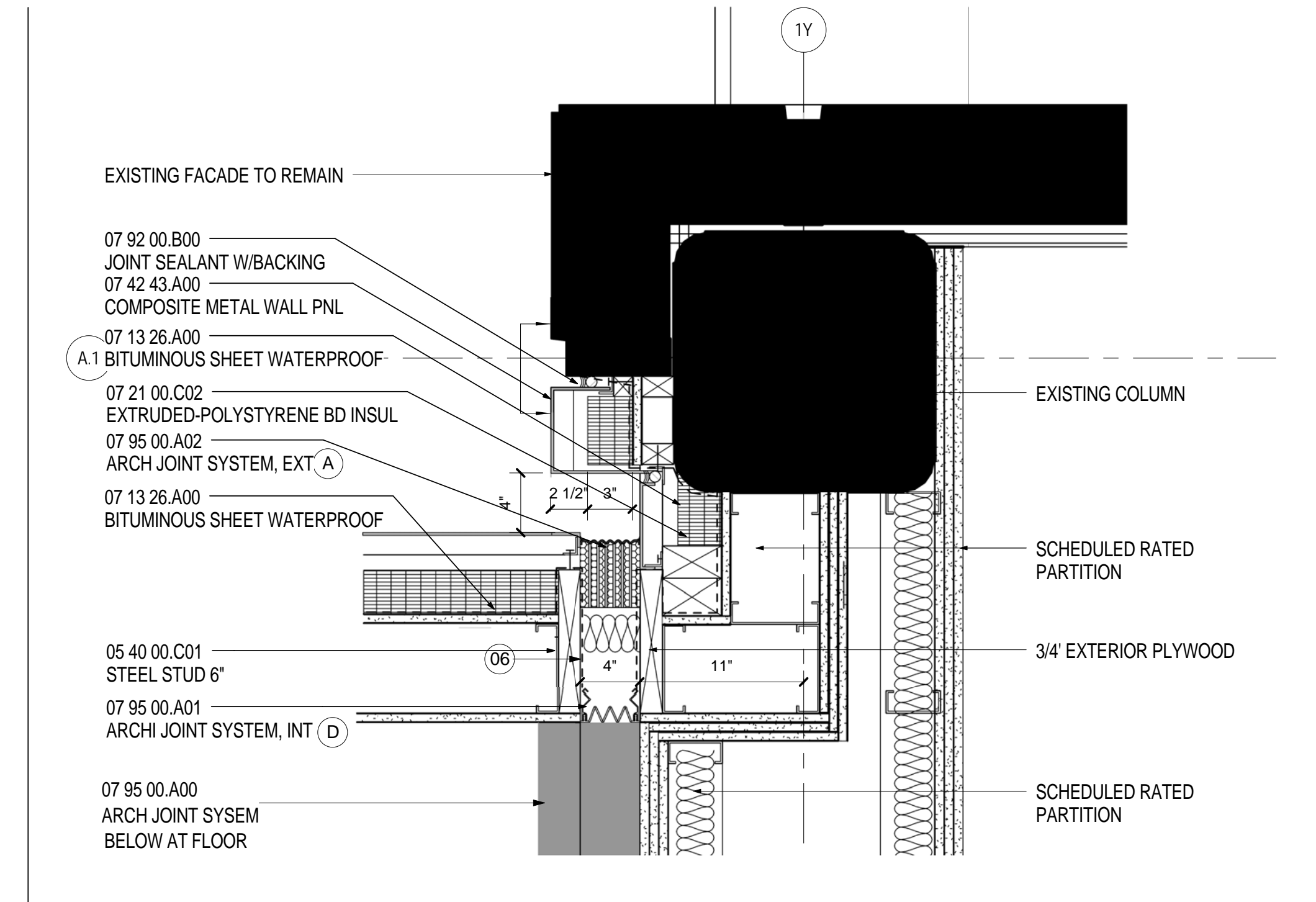
WALL TYPE D OUTSIDE CNR MULLION
SCALE: 3" = 1'-0" A09.50



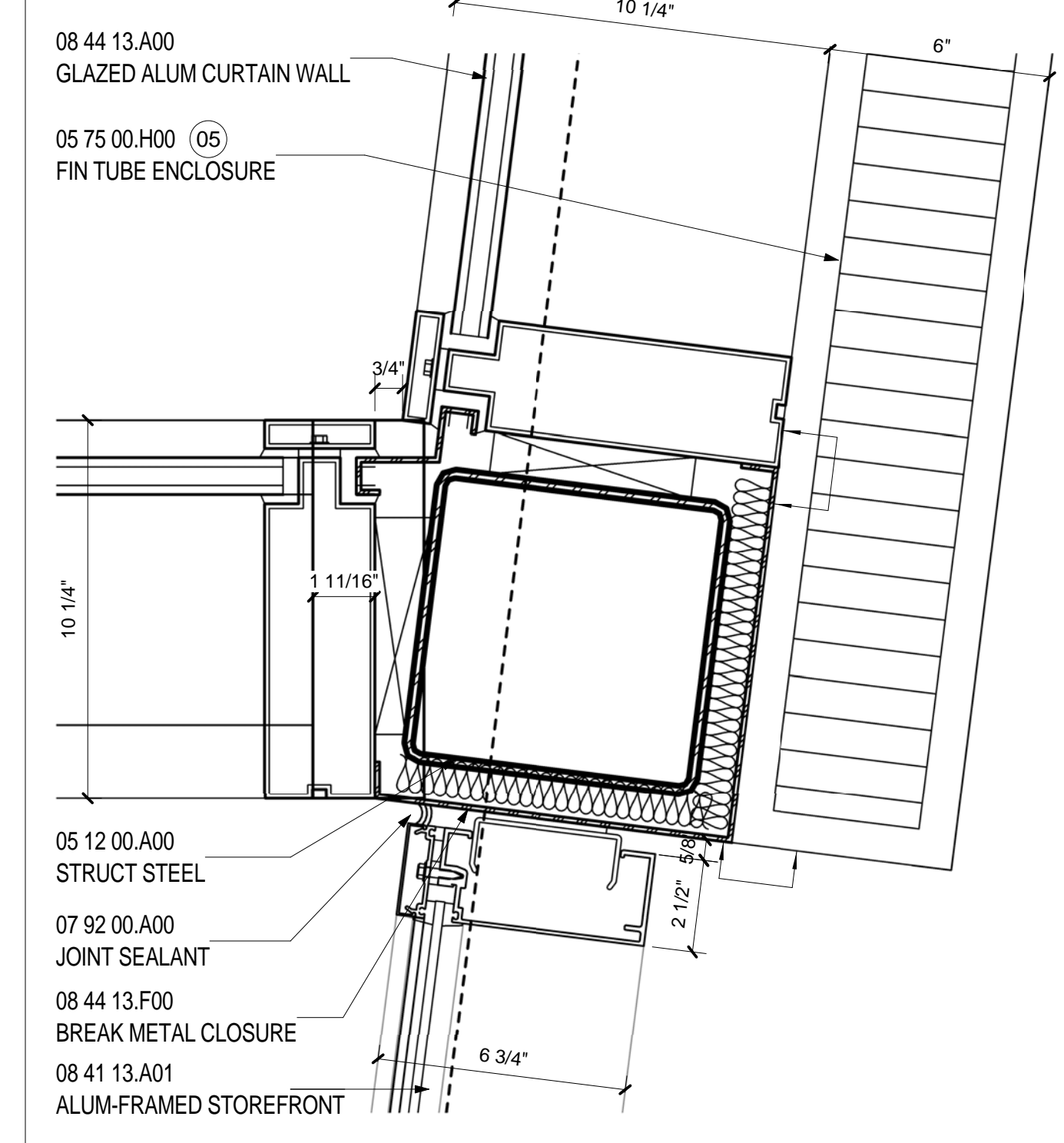
REVOLVING DOOR JAMB
SCALE: 3" = 1'-0" A09.51



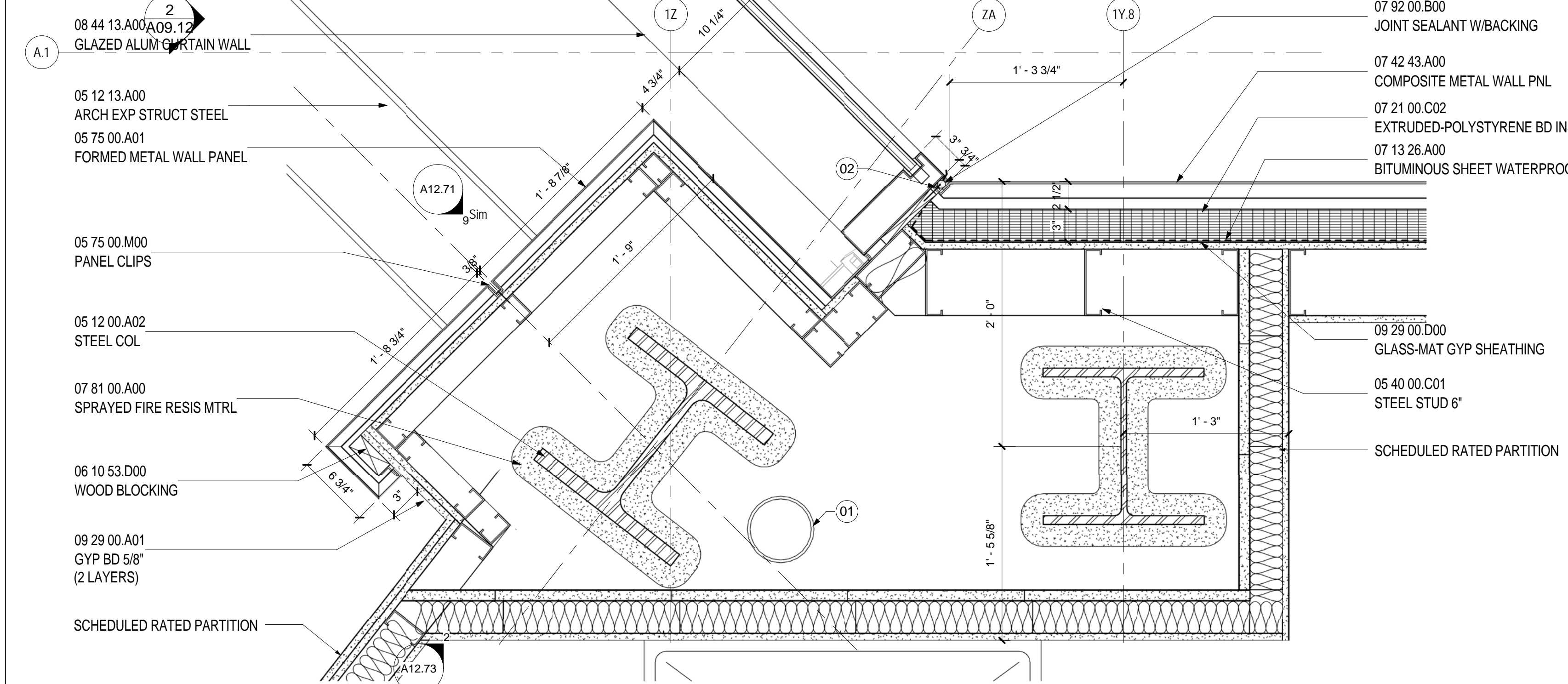
JAMB- DOOR TYPE J- K
SCALE: 3" = 1'-0" A09.51



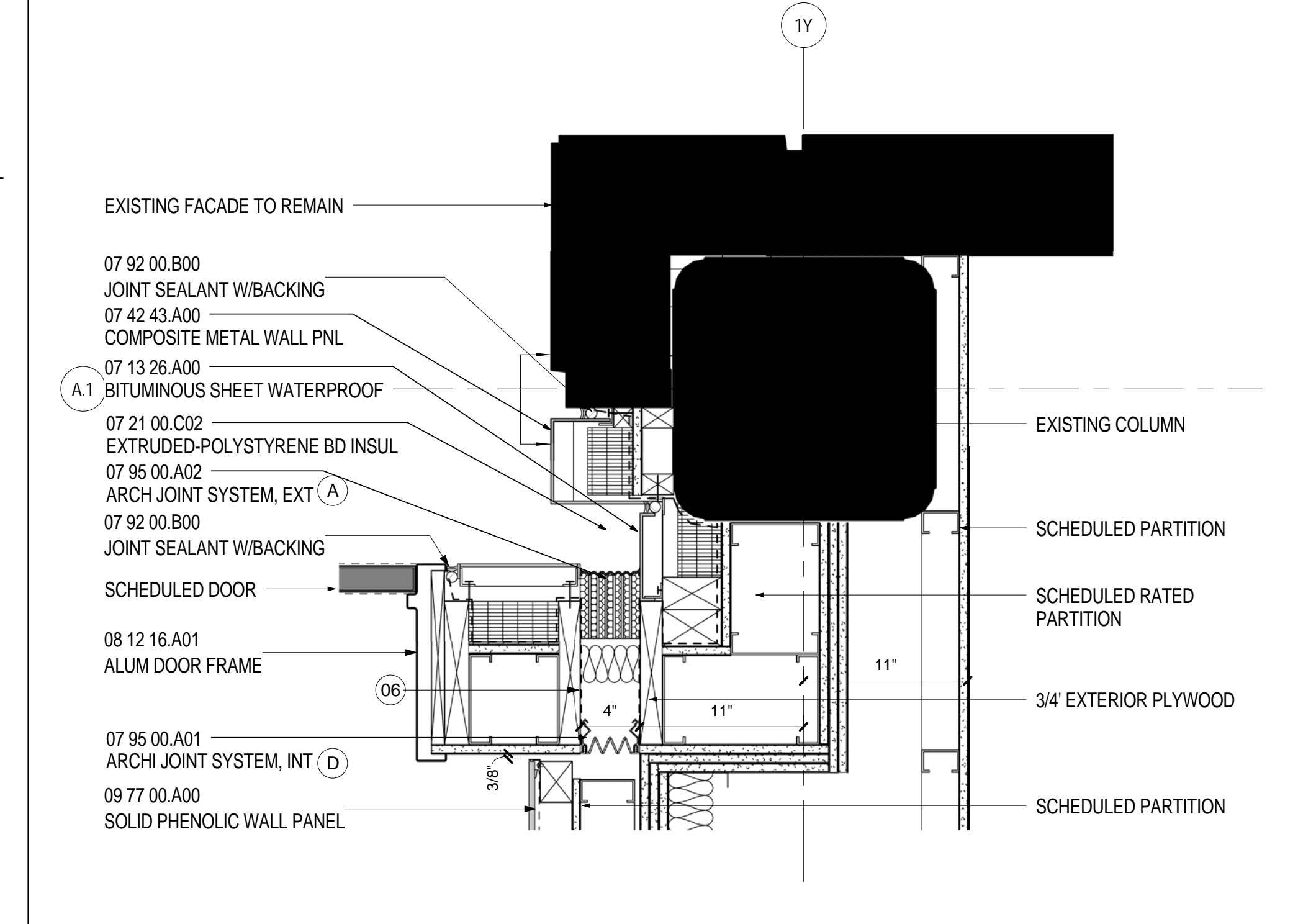
WALL TYPE C LVL 3 AT EXISTING
SCALE: 1 1/2" = 1'-0" A09.42



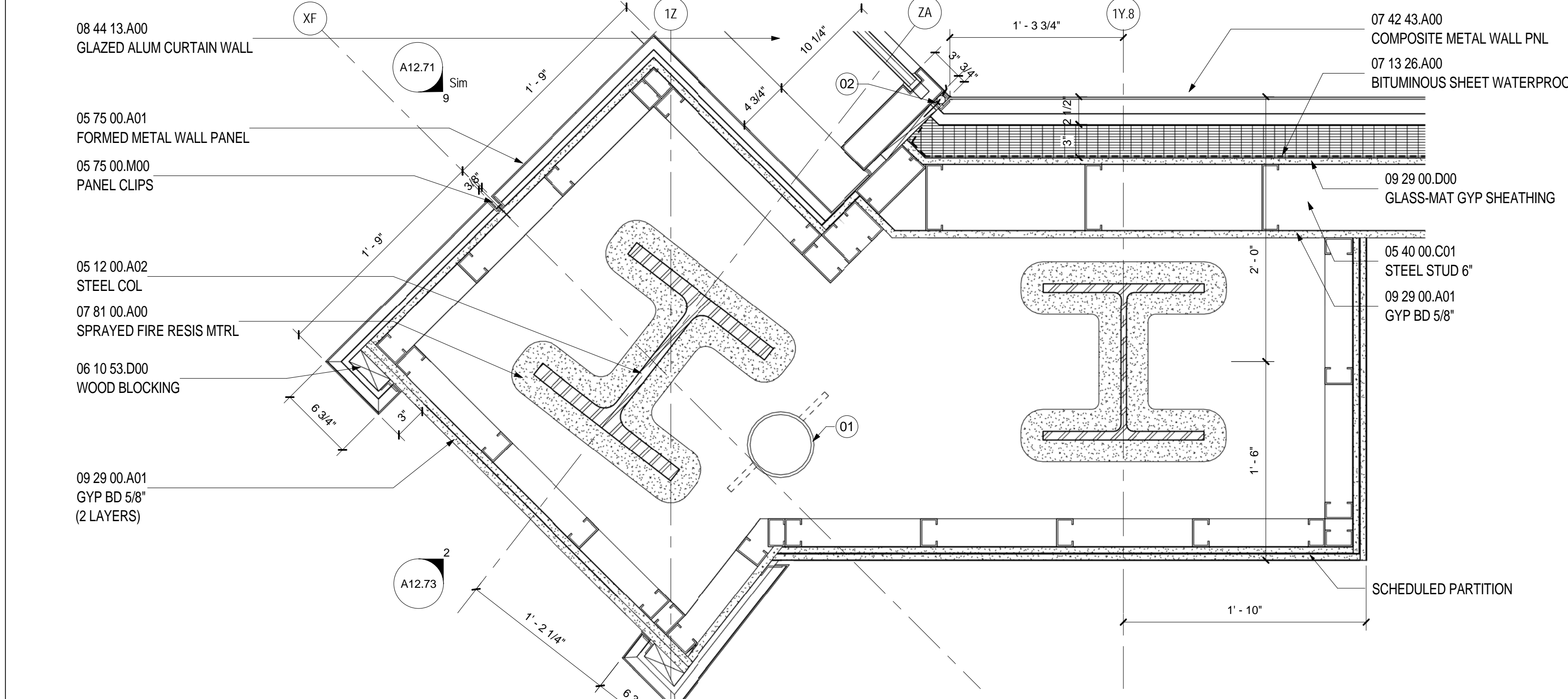
WALL TYPE D LVL 4 TRANSITION
SCALE: 3" = 1'-0" A09.52



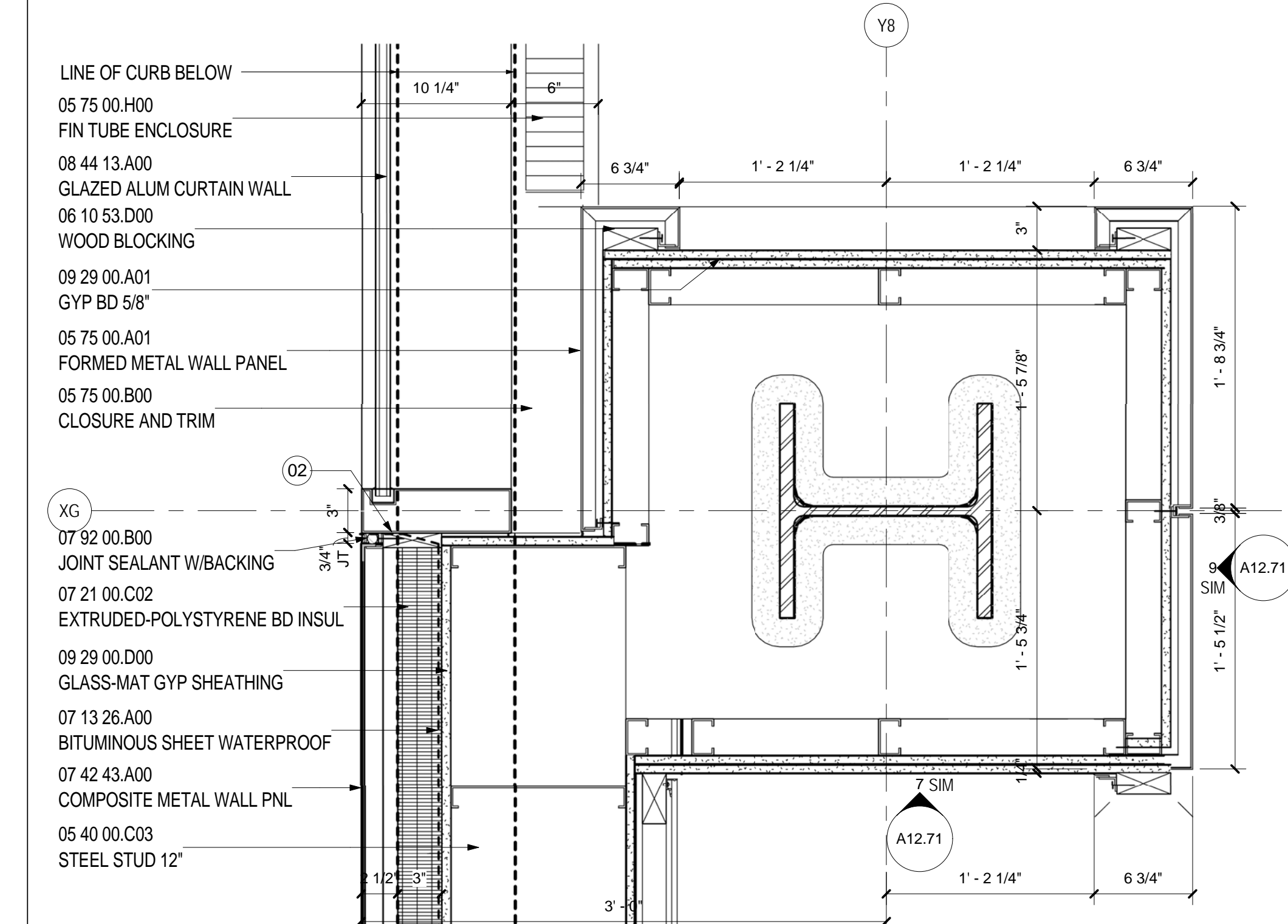
WALL TYPE C LVL 3 INSIDE CNR TRANSITION
SCALE: 1 1/2" = 1'-0" A09.42



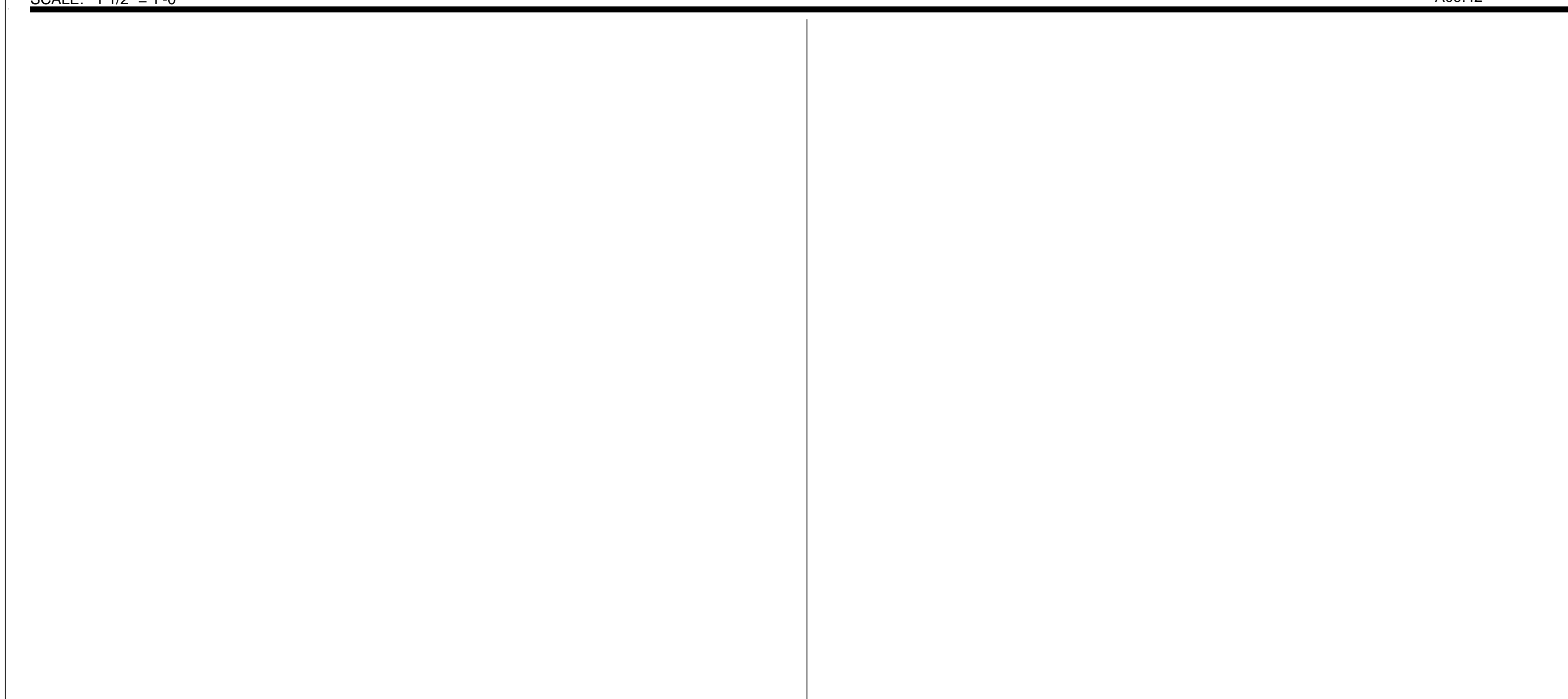
WALL TYPE C LVL 2 AT EXISTING
SCALE: 1 1/2" = 1'-0" A09.42



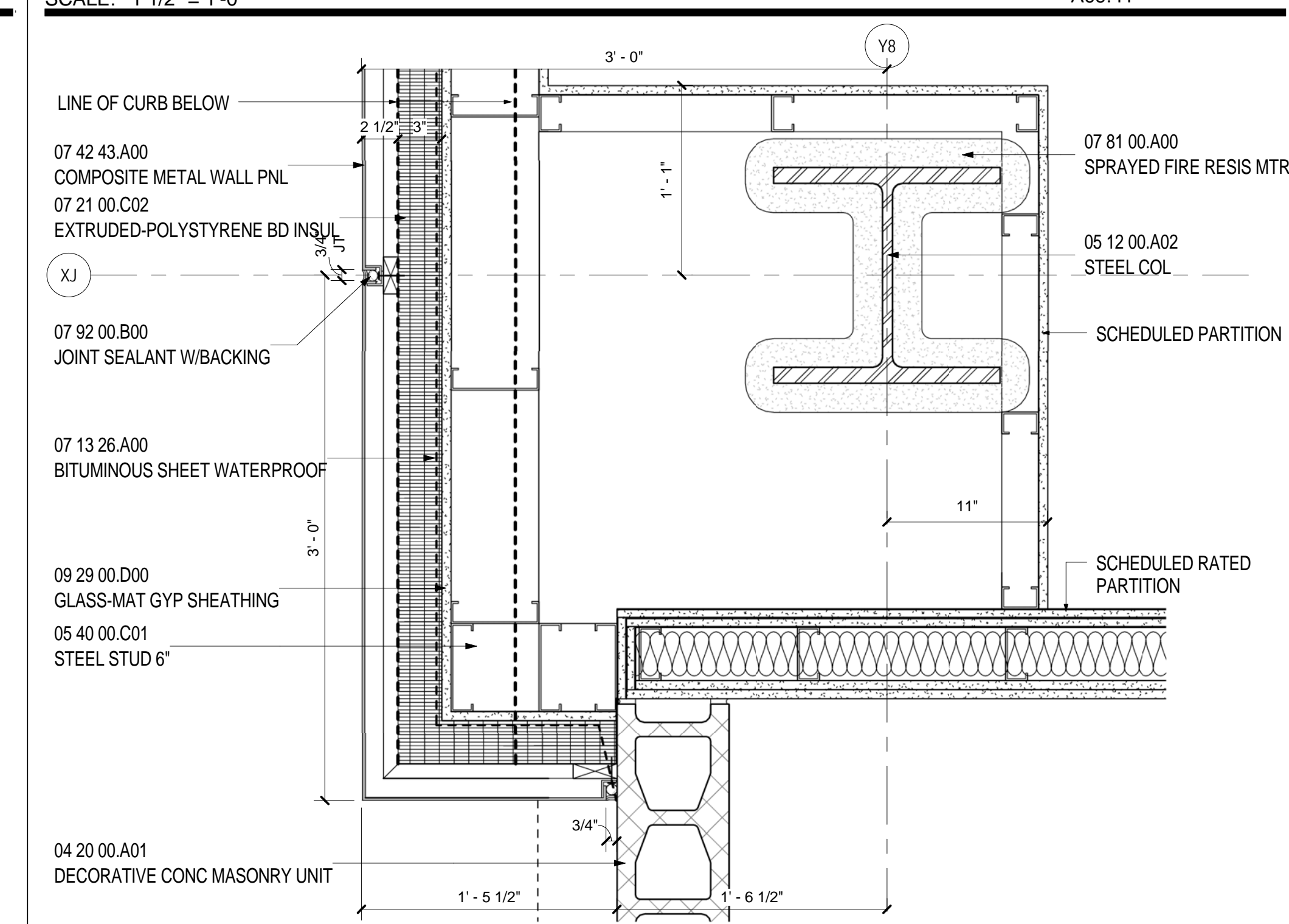
WALL TYPE C LVL 2 INSIDE CNR TRANSITION
SCALE: 1 1/2" = 1'-0" A09.42



WALL TYPE C LVL 2 TRANSITION
SCALE: 1 1/2" = 1'-0" A09.41



WALL TYPE C LVL 2 AT LOADING
SCALE: 1 1/2" = 1'-0" A09.40



WALL TYPE C LVL 2 AT LOADING
SCALE: 1 1/2" = 1'-0" A09.40

SHEET NOTES

- 01 RAIN LEADER WHERE OCCURS. REF: PLUMBING DRAWINGS FOR LOCATIONS.
- 02 TAPE BITUMINOUS SHEET WATERPROOFING TO CURTAIN WALL FOR CONTINUOUS WATER/VAPOR/AIR BARRIER.
- 03 NEW STEEL TUBE TO SUPPORT END OF EXISTING CUT STEEL TUBE BUMPER. FINISH TO MATCH STEEL BUMPER. RE: STRUCTURAL FOR MORE INFORMATION.
- 04 CONTRACTION/CONSTRUCTION JOINT. RE: STRUCTURAL DRAWINGS FOR MORE INFORMATION.
- 05 FIN TUBE ENCLOSURE. RE: MECHANICAL DRAWINGS FOR FIN TUBE INFORMATION.
- 06 TAPE BITUMINOUS SHEET WATERPROOFING TO EXPANSION JOINT (BOTH SIDES) FOR CONTINUOUS WATER/VAPOR/AIR BARRIER.
- 07 PROVIDE INTUMESCENT PAINT AT COLUMNS X/225 AND X/225 FROM LEVEL 2 TO UNDERSIDE OF LEVEL 4. PROVIDE SPRAY ON FIREPROOFING ABOVE LEVEL 4 AS REQUIRED.
- 08 STOP INSULATION, GYPSUM SHEATHING AND WATERPROOFING AT TOP OF CURB FOR REMOVABLE PANELS.
- 09 WRAP WATERPROOFING INTO FRAMED AREA OF REMOVABLE PANELS.
- 10 REMOVABLE METAL PANELS FOR ACCESS TO CHILLERS.
- 11 EXISTING STEEL TUBE AND RAIL CUT SHORT TO ACCOMMODATE NEW VESTIBULE. CAP ENDS OF STEEL TUBE AND HANDRAIL. FINISH TO MATCH.
- 12 GROUT SOLID
- 13 RADIAL CORNER
- 14 ALIGN TOP OF DOOR TO BOTTOM OF REVEAL OF THE ADJACENT METAL PANEL.
- 15 EAST FACADE AT EGRESS STAIR TO BE 2HR RATED PER CODE DUE TO ADJACENCY TO GLAZING.
- 16 COORDINATE DIMENSION WITH REVOLVING DOOR AND STEEL DOOR LOCATIONS. VIF.
- 17 ALUMINUM DOOR GLAZED WITH METAL PANEL TO MATCH ADJACENT

GENERAL NOTES

Portland International Jetport
1001 Westbrook Street
Portland, Maine 04102

Gensler
2020 K Street, Northwest
Suite 200
Washington DC 20006
Telephone 202.721.5200
Facsimile 202.872.8587

Date	Description
10/26/09	ISSUED FOR PERMIT
08/01/11	ISSUED FOR CONSTRUCTION

Seal/Signature

Project Name
PWM Terminal Enhancement

Project Number
09.6395.000

Description
PLAN DETAILS

Scale
As indicated

A12.01

© 2009 Gensler