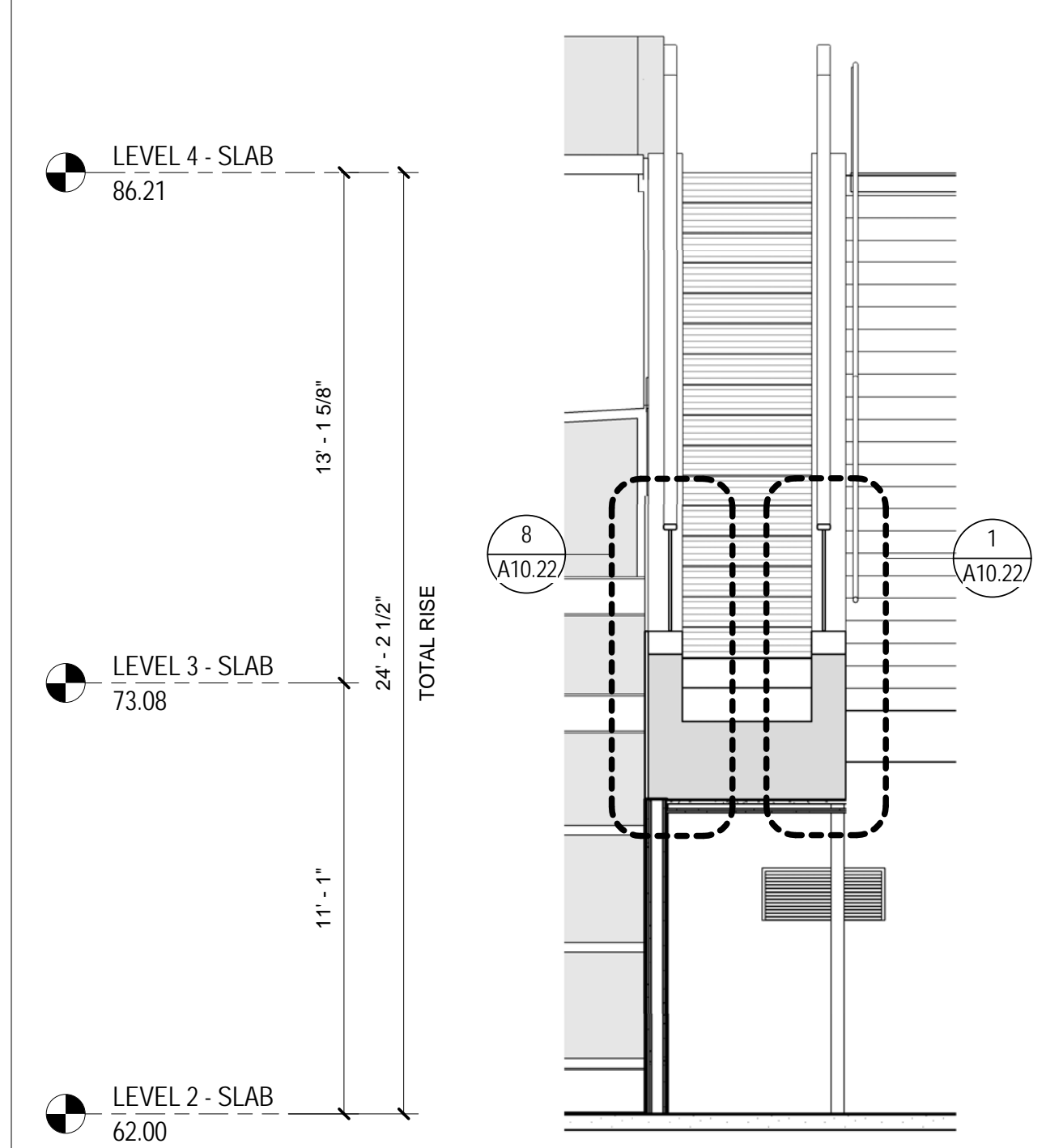
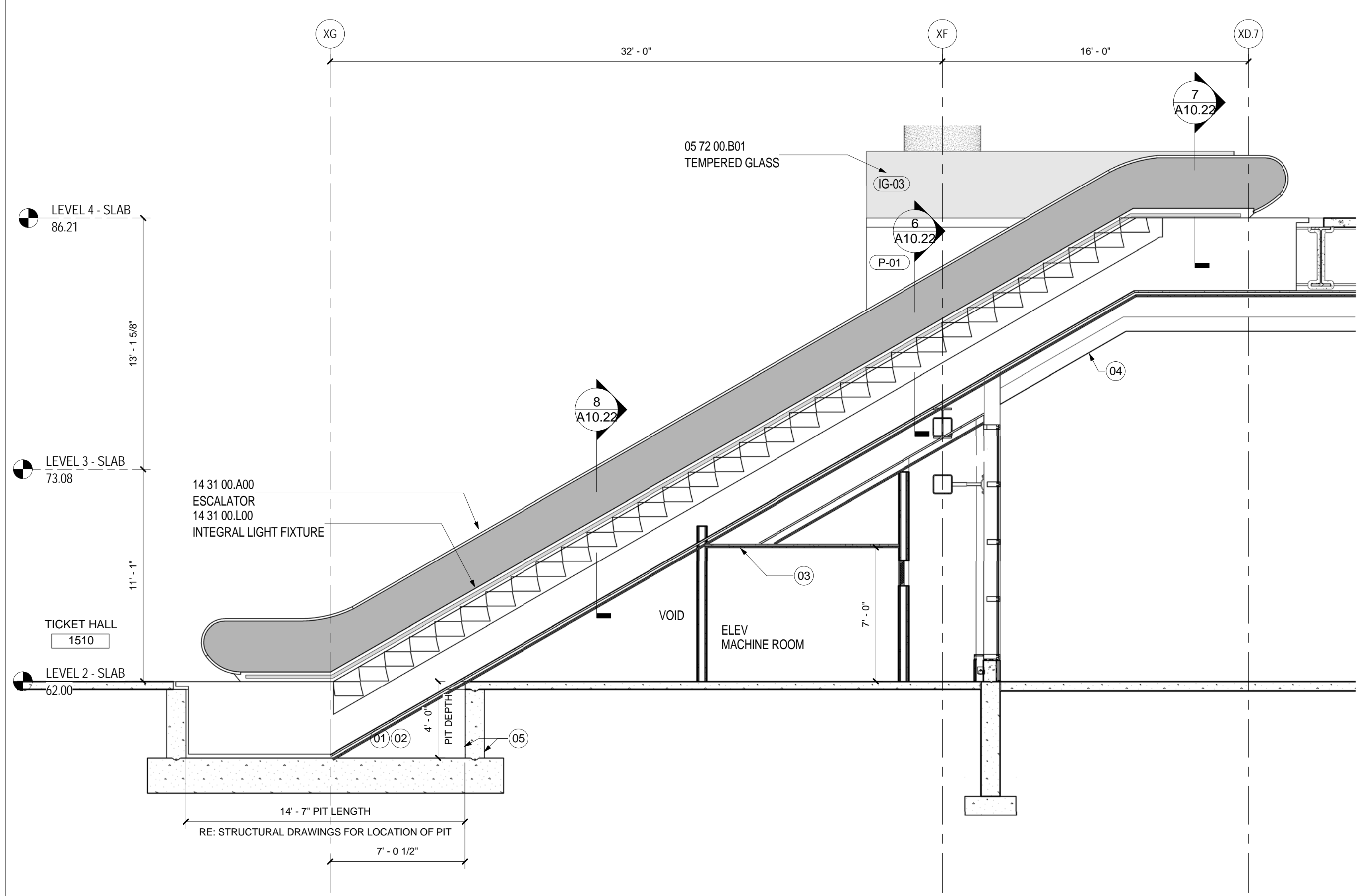


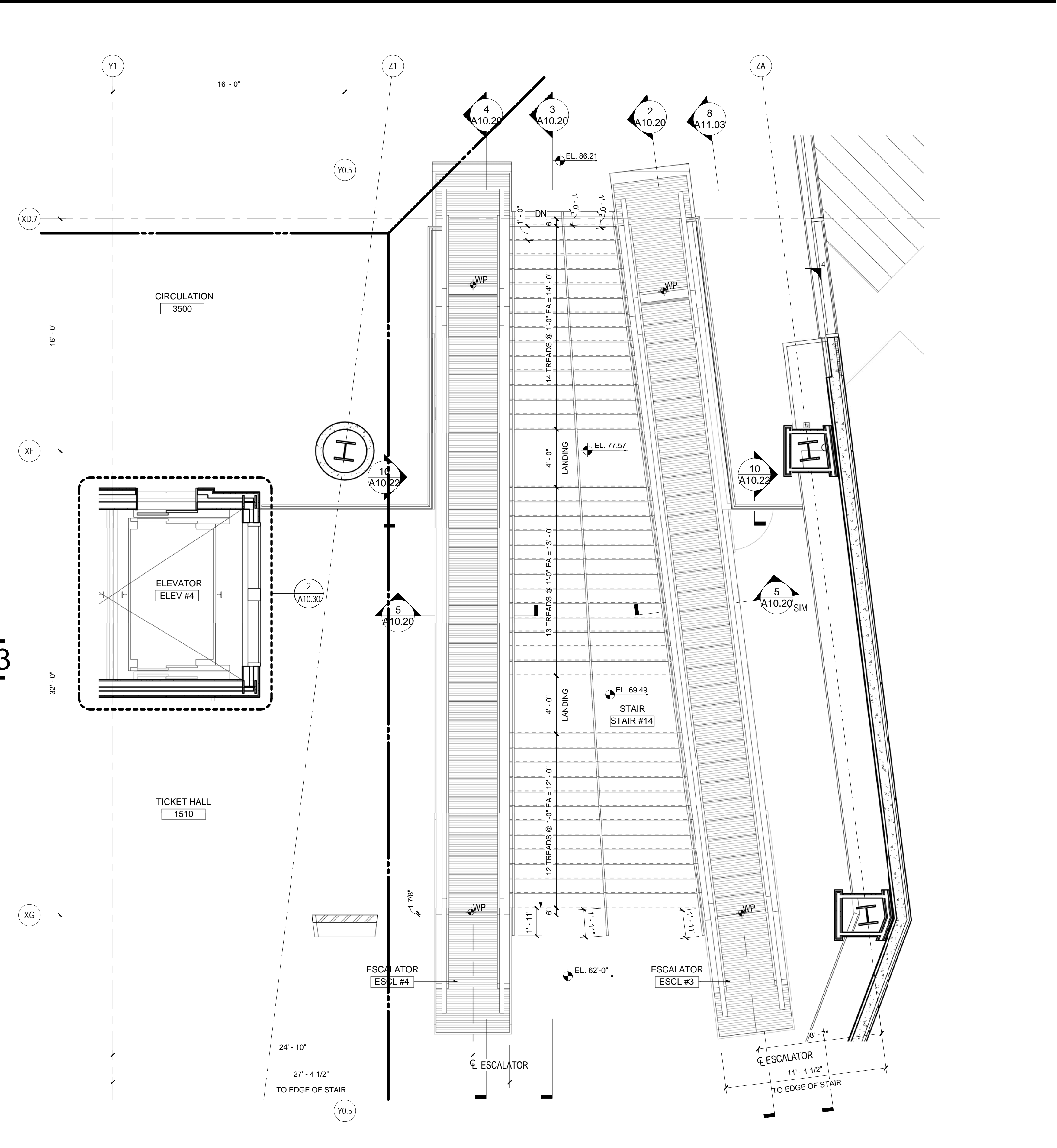
SECTION - STAIR 14
SCALE: 1/4" = 1'-0" A10.20 3



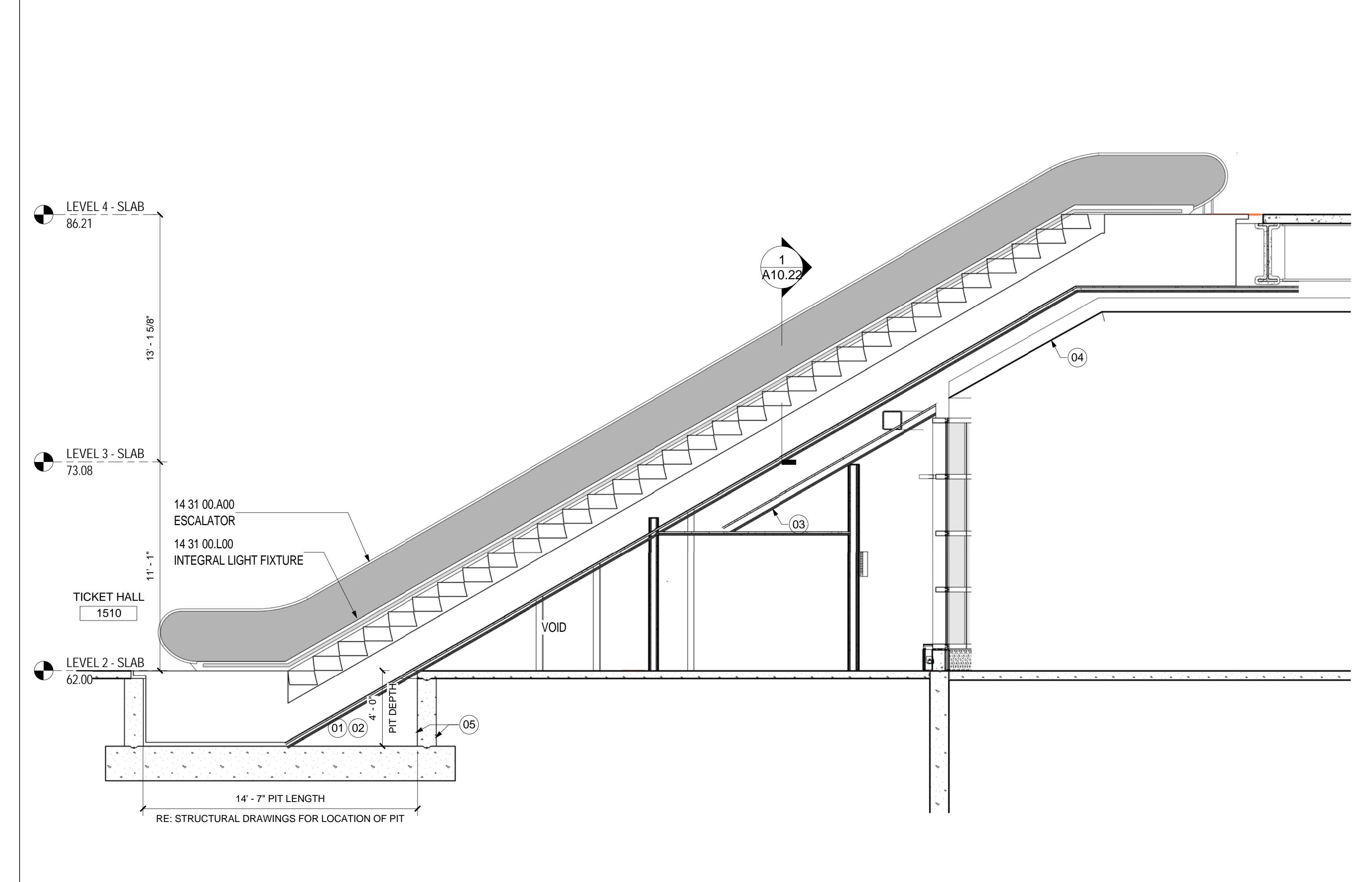
ESCALATOR #4 SECTION (ESCL #3 OPP)
SCALE: 1/4" = 1'-0" A10.20 5



SECTION - ESCALATOR #4
SCALE: 1/4" = 1'-0" A10.20 4



PLAN LEVEL 4 - ESCALATORS #3 & 4 / STAIR #14
SCALE: 1/4" = 1'-0" A02.02.03 1



SECTION - ESCALATOR #3
SCALE: 1/4" = 1'-0" A10.20 2

- SHEET NOTES**
- PIT LENGTH, WIDTH AND DEPTH TO BE COORDINATED WITH SELECTED MANUFACTURER
 - HEAT DETECTOR PROVIDED AT BASE OF EACH ESCALATOR
 - ENCLOSE THE UNDERSIDE OF ALL ESCALATORS WITH FIRE RESISTIVE MATERIALS PER ASME A17.1. SOFFIT ASSEMBLY WEIGHT NOT TO EXCEED MANUFACTURER'S RECOMMENDATIONS.
 - LINE OF UNDERSIDE OF EXTERIOR METAL PANEL SOFFIT.
 - PROVIDED METAL OXIDE WATER PROOFING AND WATER STOPS IN AND AROUND PIT. RE: SECTION 07 16 19 IN THE PROJECT MANUAL FOR MORE INFORMATION.

Portland International Jetport
1001 Westbrook Street
Portland, Maine 04102

Gensler
2020 K Street, Northwest
Suite 200
Washington DC 20006
Telephone 202.721.5200
Facsimile 202.872.8587

Date	Description
09/22/08	DESIGN DEVELOPMENT
12/03/08	75% CONSTRUCTION DOCUMENTS
01/23/09	95% CONSTRUCTION DOCUMENTS
10/26/09	ISSUED FOR PERMIT
145 09/01/11	ISSUED FOR CONSTRUCTION

Seal/Signature

Project Name
PJM Terminal Enhancement

Project Number
09.6395.000

Description
VERTICAL CIRCULATION - ESCALATORS #3 & 4 / STAIR #14

Scale
1/4" = 1'-0"

A10.20

© 2009 Gensler