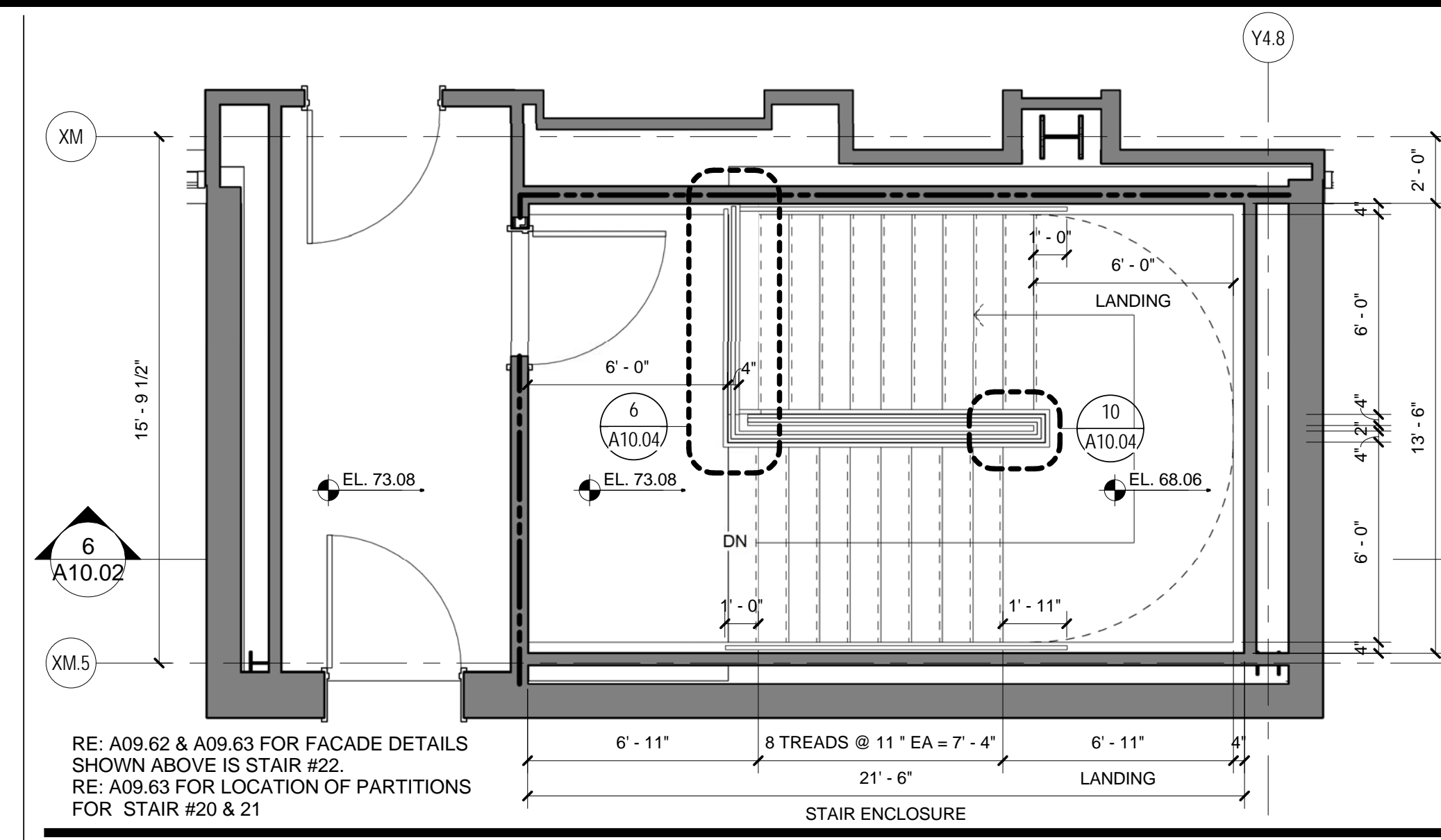


**SHEET NOTES**

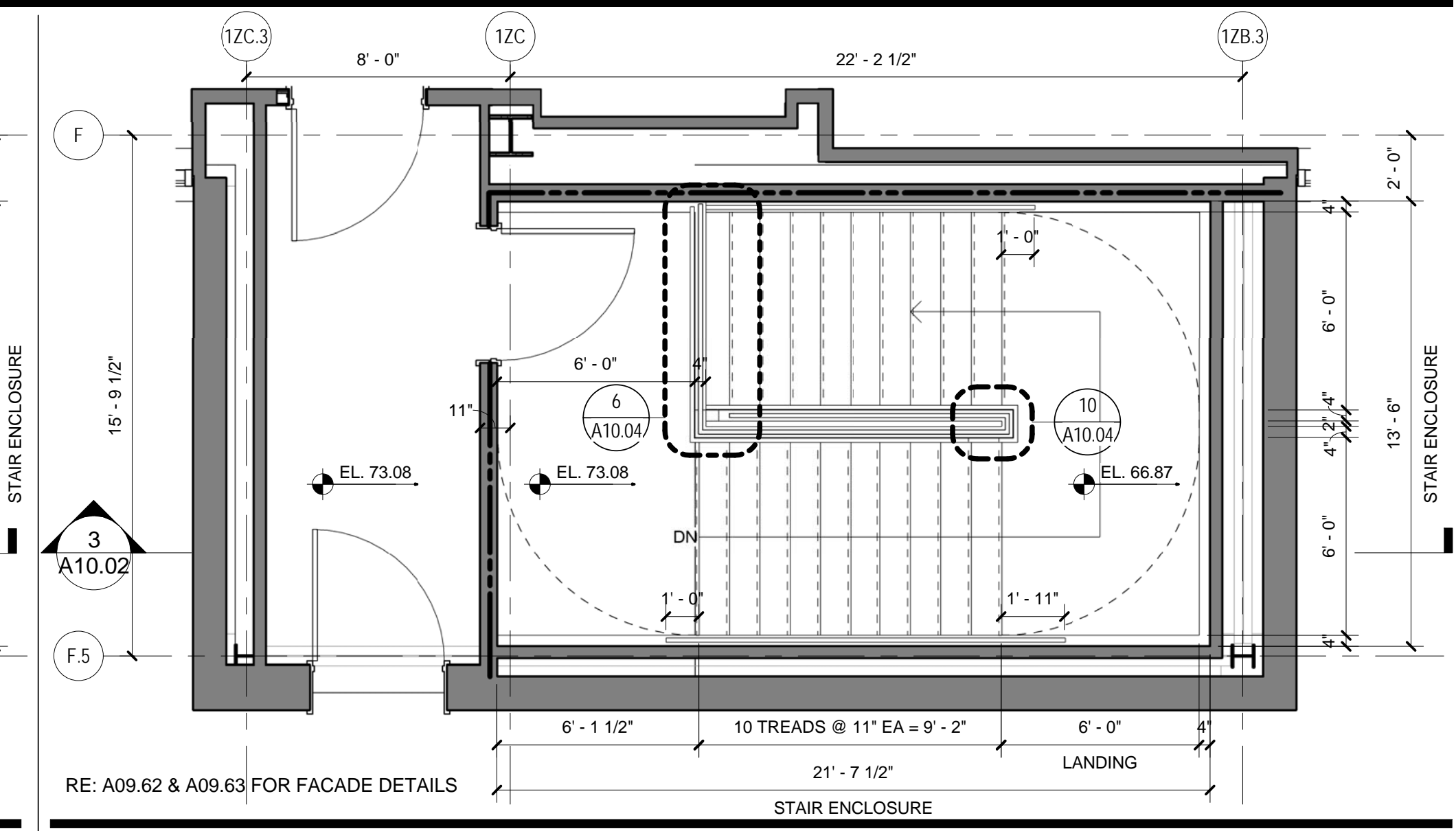
Portland International  
Jetport  
1001 Westbrook Street  
Portland, Maine 04102

2020 K Street, Northwest  
Suite 200  
Washington, DC 20006  
Telephone 202.721.5200  
Facsimile 202.872.8587

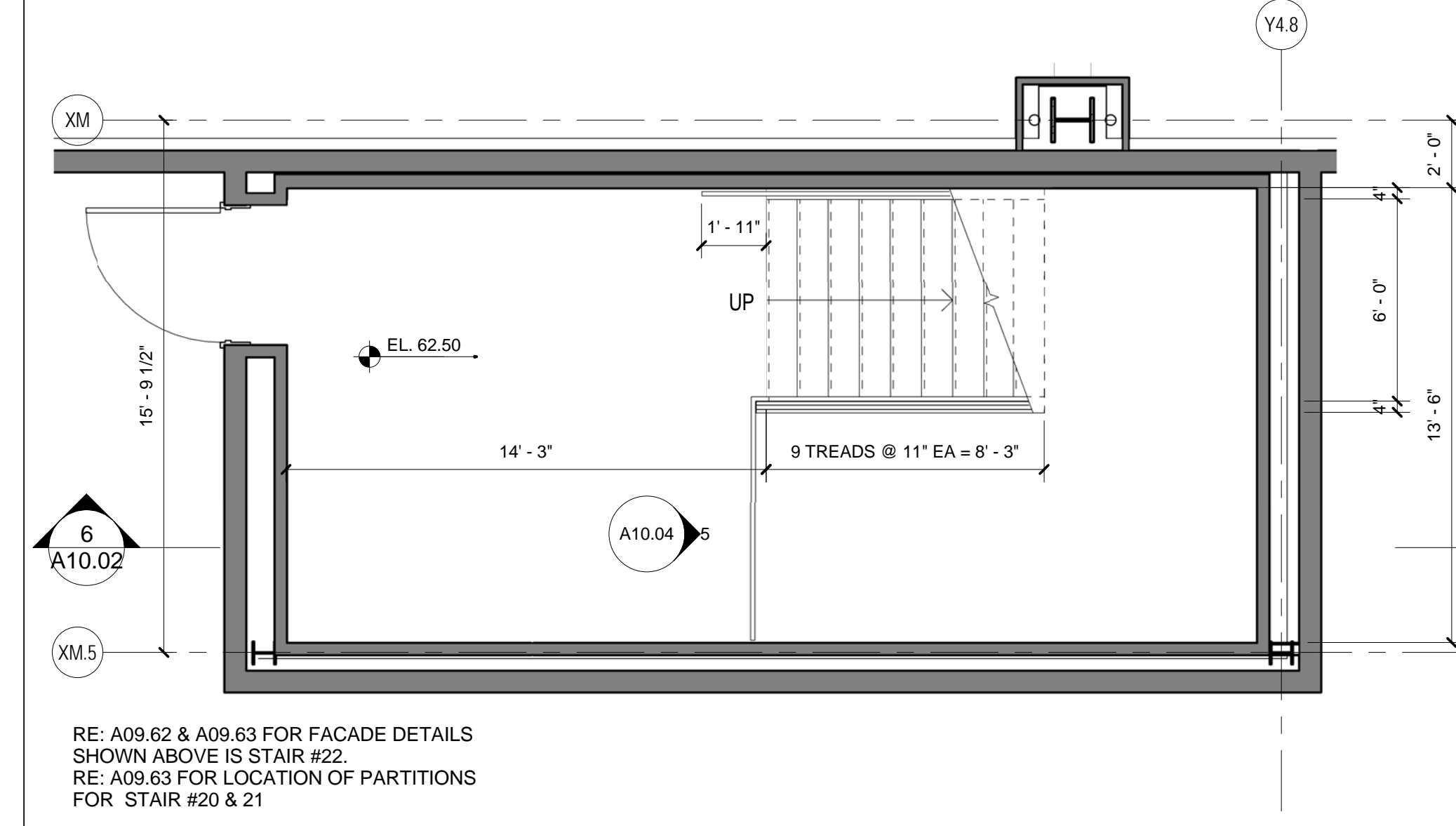
**Gensler**



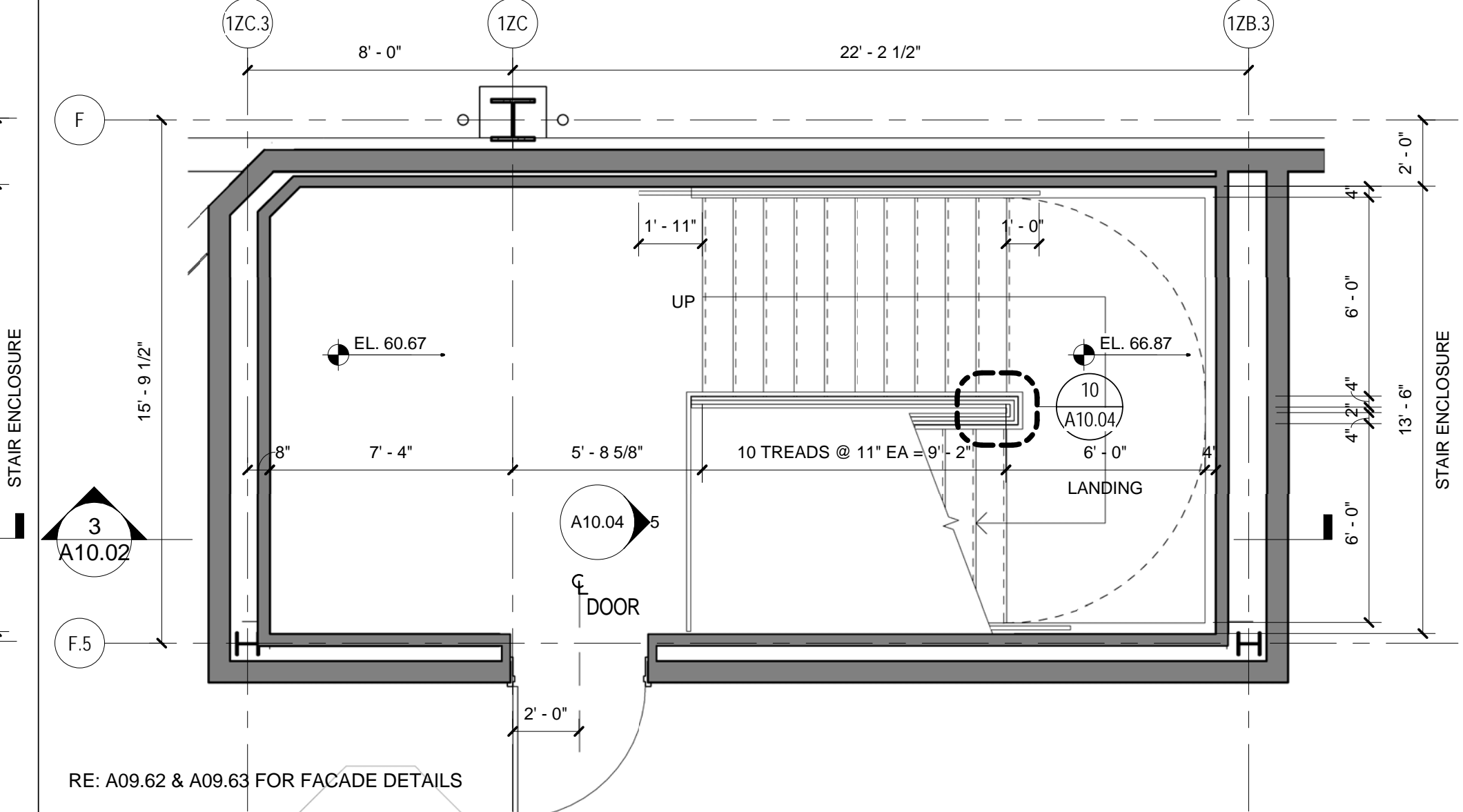
**STAIR #20-22 - PLAN LEVEL 3**  
SCALE: 1/4" = 1'-0"



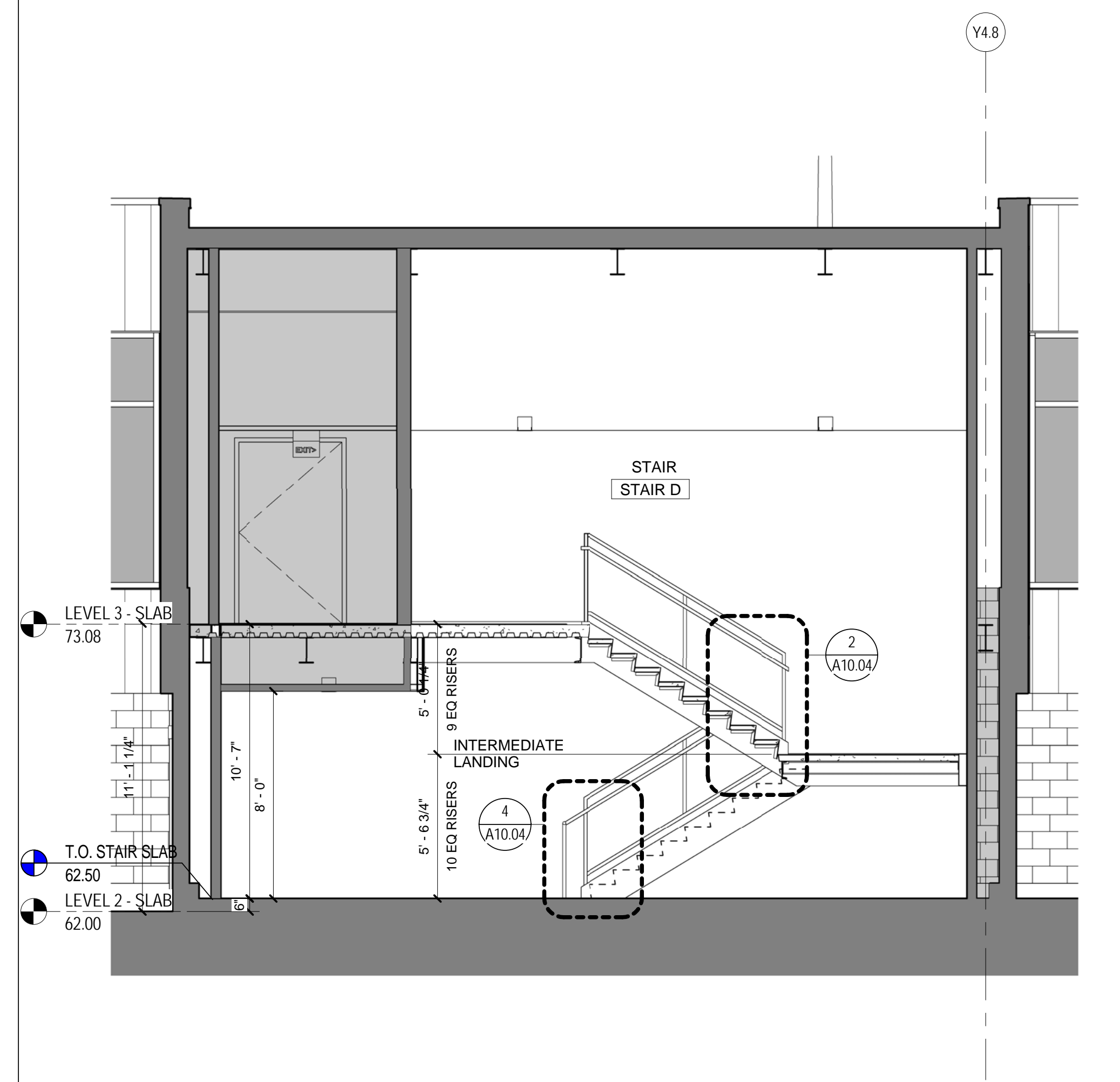
**STAIR #19 - PLAN LEVEL 3**  
SCALE: 1/4" = 1'-0"



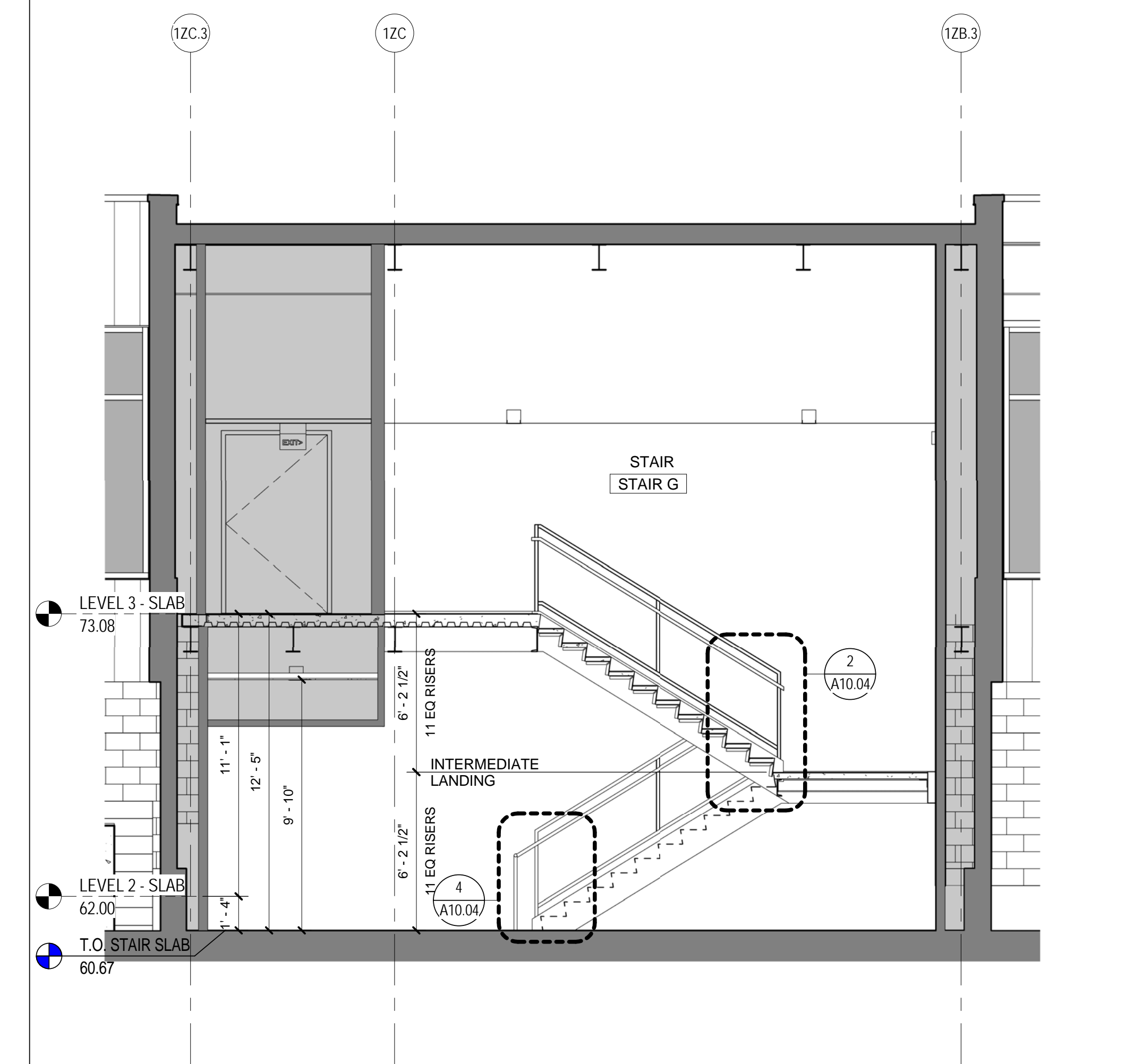
**STAIR #20-22 - PLAN LEVEL 2**  
SCALE: 1/4" = 1'-0"



**STAIR #19 - PLAN LEVEL 2**  
SCALE: 1/4" = 1'-0"



**STAIR #22 - SECTION (SIM @ STAIR #20 & 21)**  
SCALE: 1/4" = 1'-0"

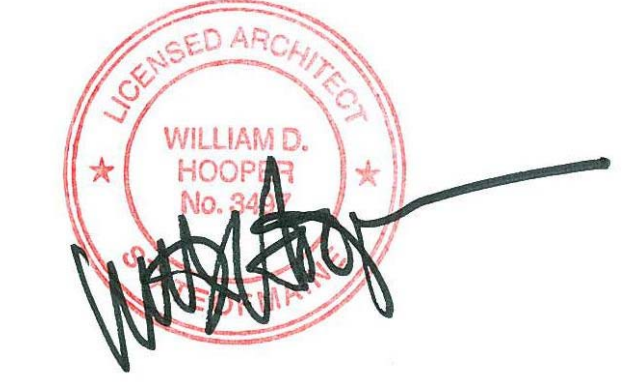


**STAIR #19 - SECTION**  
SCALE: 1/4" = 1'-0"

**GENERAL NOTES**

Date	Description
10/26/09	ISSUED FOR PERMIT
09/01/11	ISSUED FOR CONSTRUCTION

Seal/Signature



Project Name  
PWM Terminal Enhancement

Project Number  
09.6395.000

Description  
VERTICAL CIRCULATION - STAIR #19-22

Scale  
1/4" = 1'-0"

**A10.02**

© 2009 Gensler