

ENLARGED PLAN @ ATO 1520

SCALE: 1/4" = 1'-0"

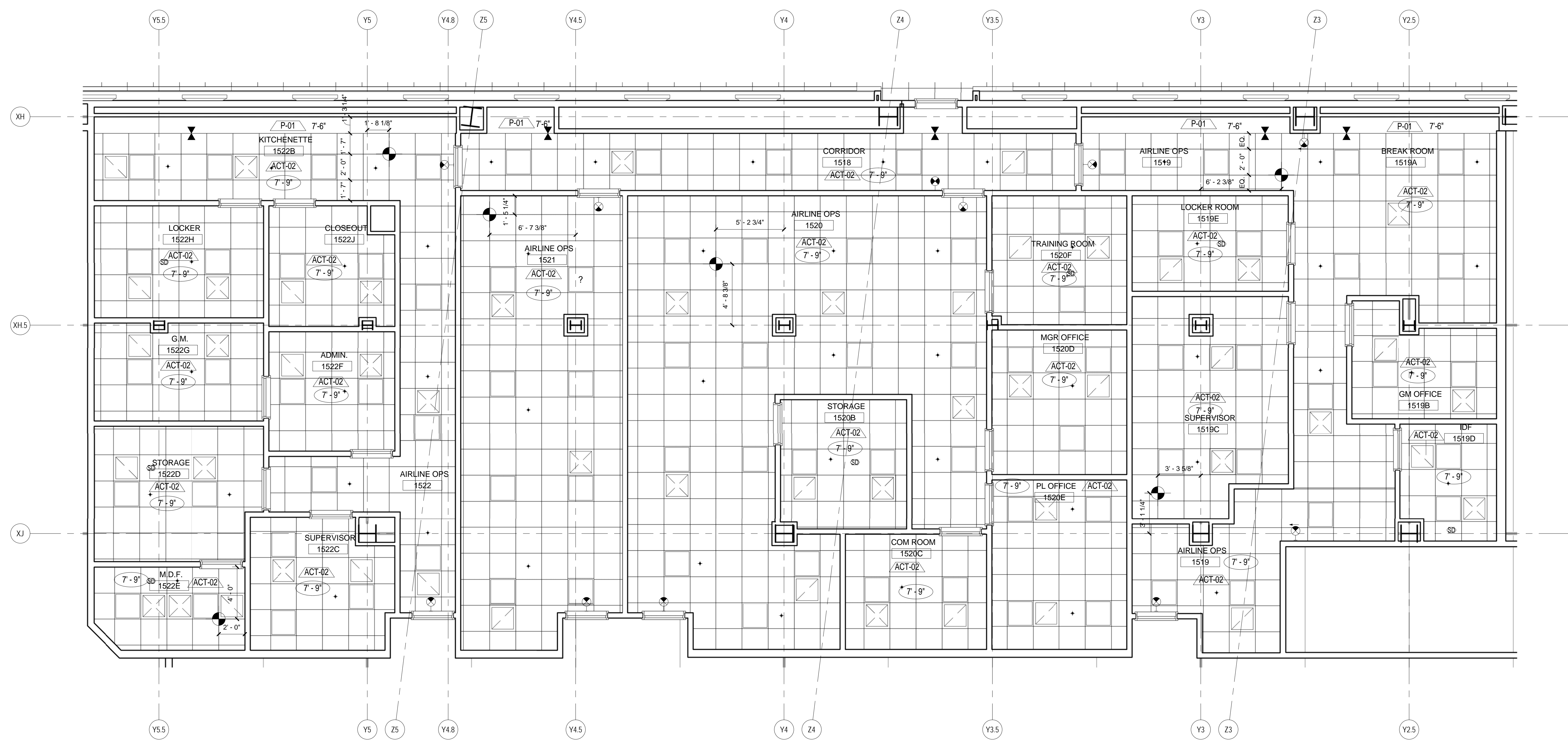
A04.01.05

3 ENLARGED PLAN @ ATO 1523

SCALE: 1/4" = 1'-0"

A04.02.05

2



ENLARGED PLAN @ ATO

SCALE: 1/4" = 1'-0"

A04.02.05

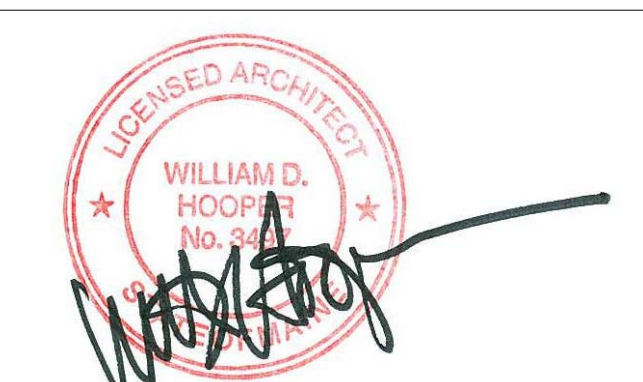
1

Date	Description
88 03/09/11	BULLETIN #79
145 09/01/11	ISSUED FOR CONSTRUCTION

**GENERAL NOTES**

- A FOR LIGHTING TYPES, DETAILS AND INFORMATION REFER TO PROJECT MANUAL.
- B FOR DIFFUSER INFORMATION AND QUANTITY, REFER TO PROJECT MANUAL.
- C ALL GYRO CEILINGS TO BE PAINTED P-01 U.O.N.
- D SPRINKLER HEADS ARE SHOWN FOR DESIGN INTENT ONLY. REFER TO FIRE PROTECTION DRAWINGS FOR ADDITIONAL INFORMATION.
- E FOR CAMERA LOCATION AND MOUNTING DETAILS RE: I.T. AND COMMUNICATION ENGINEERS DRAWINGS.
- F DEVICES AND FIXTURES IN BAGGAGE HANDLING ROOMS TO BE COORDINATED WITH BHS EQUIPMENT FOR MOUNTING AND VISIBILITY.
- G ACT CEILINGS TO BE CENTERED IN EACH ROOM U.O.N.

Seal/Signature



Project Name  
PJM Terminal Enhancement

Project Number  
09.6395.000

Description  
ENLARGED REFLECTED CEILING PLANS - ATO

Scale  
As indicated

**A08.03**

© 2009 Gensler