

Portland International
Jetport

1001 Westbrook Street
Portland, Maine 04102

Gensler
2020 K Street, Northwest
Suite 200
Washington DC 20006
Telephone 202.721.5200
Facsimile 202.872.8587

SHEET NOTES

- 01 NO CEILING
- 02 CEILING BY TENANT
- 03 CONTROL JOINT. REFER TO 06/A12.80
- 04 LIGHTING BY TENANT
- 05 PATCH AND REPAIR CEILING AS REQUIRED. CEILING TO MATCH EXISTING.
- 06 GYP. CEILING. PAINTED P-01
- 07 ESCALATORS TO HAVE INTEGRAL LIGHTING STRIPS ON SIDE PANELS. PROVIDED BY ESCALATOR MANUFACTURER.
- 08 2-HR RATED GYPSUM BOARD CEILING
- 09 CEILING MOUNTED TV. REFER TO TELECOM DRAWING AND PROJECT MANUAL FOR ADDITIONAL INFORMATION
- 10 PROVIDE LIGHT FIXTURE AT EVERY STAIR LANDING U.O.N. REFER TO ELECTRICAL ENGINEER DRAWINGS FOR MORE INFORMATION.
- 11 FIRE SHUTTER
- 12 SIGNAGE AND WAYFINDING: REFER TO A07 SERIES DRAWING FOR ADDITIONAL INFORMATION
- 13 ACCESS PANEL FOR FIRE SHUTTER. COORDINATE EXACT LOCATION OF PANEL WITH ARCHITECT.
- 14 12" ROUND ACCESS PANEL
- 15 REINSTALL EXISTING DIFFUSERS. LIGHT FIXTURES; SIGN DEVICES AS PER EXISTING LAYOUT
- 16 CONDUIT FOR CAMERA SHALL BE CONCEALED. FLEX TO RIGID TRANSITION SHALL BE RECESSED WITHIN PARTITIONS. WEATHERPROOF ALL PENETRATIONS AS REQUIRED.
- 17 DASHED LINE INDICATES 3-HOUR RATED FASCIA ABOVE CEILING TO THE U/S OF ROOF. U/S OF FINISHED GYPSUM WALLBOARD CEILING SHALL TRANSITION SMOOTHLY FROM RATED TO UN-RATED SECTIONS.
- 18 REFER TO DETAIL 1/A12.79 FOR CEILING CONSTRUCTION AND FIRE-RATINGS. ALL PENETRATIONS AND DEVICES SHALL BE RATED ACCORDING TO THE CEILING ASSEMBLY WHERE THEY ARE LOCATED.

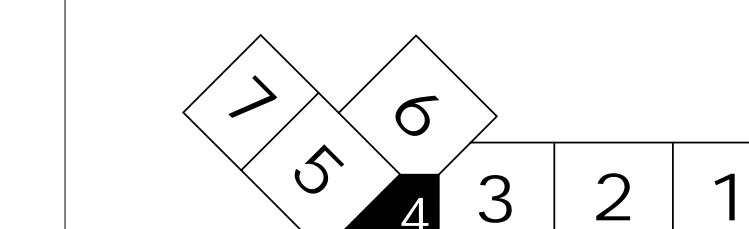
EXPANSION JOINTS

- (A) MODEL: SEISMIC COLORSEAL 4" (COLOR: BRONZE) MFG: EMSEAL
- (B) MODEL: FWS 400 (COLOR: GRAY) MFG: C/S GROUP
- (C) MODEL: FWS 400 MFJ-4W FIRE BARRIER (COLOR: GRAY) MFG: C/S GROUP
- (D) MODEL: FWS 400 (COLOR: WHITE) MFG: C/S GROUP
- (E) MODEL: APW 400 MFG: C/S GROUP
- (F) MODEL: WFR3 (COLOR: WHITE) MFG: EMSEAL OR EQUIVALENT
- (G) MODEL: GTPM-400 HD MFG: C/S GROUP
- (H) MODEL: FWSC-400 (COLOR: WHITE) MFG: C/S GROUP
- (J) MODEL: BRJ-400 W/ FIRE BARRIER MFG: C/S GROUP
- (K) MODEL: BRJW-400 W/ FIRE BARRIER MFG: C/S GROUP

GENERAL NOTES

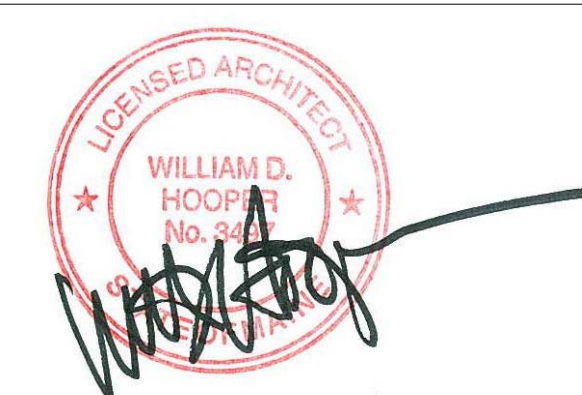
- A. FOR LIGHTING TYPES, DETAILS AND INFORMATION REFER TO PROJECT MANUAL.
- B. FOR OFFISER INFORMATION AND QUANTITY, REFER TO PROJECT MANUAL.
- C. ALL GYP. CEILINGS TO BE PAINTED P-01 U.O.N.
- D. SPRINKLER HEADS ARE SHOWN FOR DESIGN INTENT ONLY. REFER TO FIRE PROTECTION DRAWINGS FOR ADDITIONAL INFORMATION.
- E. FOR CAMERA LOCATION AND MOUNTING DETAILS RE. TO IT AND COMMUNICATION ENGINEERS DRAWINGS.
- F. ALL HOLDROOM CEILINGS TO BE ACT-01 U.O.N.
- G. ACT CEILINGS TO BE CENTERED IN EACH ROOM U.O.N.

KEY PLAN



Date	Description
07/11/08	SCHEMATIC DESIGN
09/22/08	DESIGN DEVELOPMENT
12/03/08	75% CONSTRUCTION DOCUMENTS
01/23/09	95% CONSTRUCTION DOCUMENTS
10/26/09	ISSUED FOR PERMIT
11/12/09	ADDENDUM #2
145 09/01/11	ISSUED FOR CONSTRUCTION

Seal/Signature



Project Name
PJM Terminal Enhancement

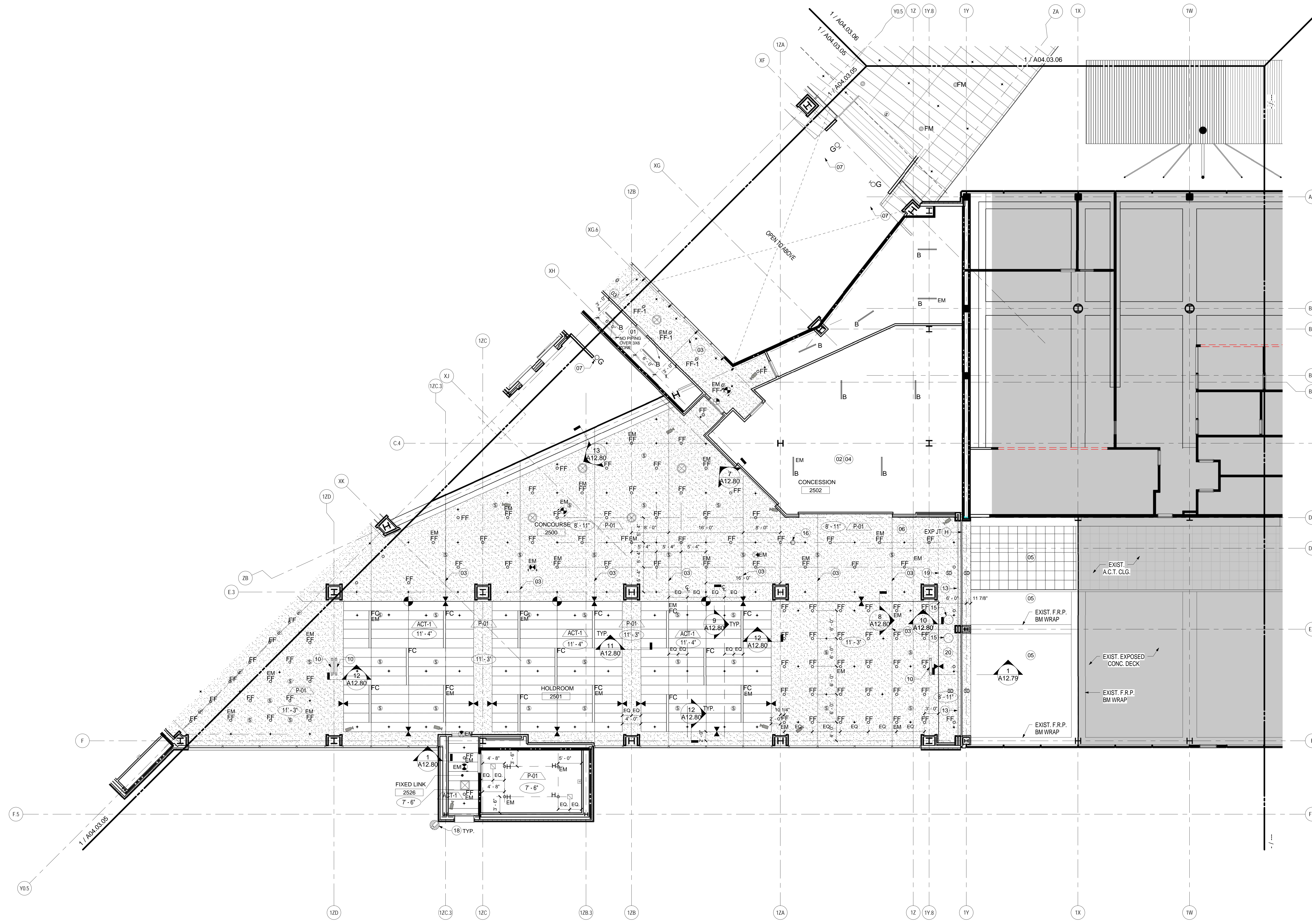
Project Number
09.6395.000

Description
REFLECTED CEILING PLAN - LEVEL 3 - ZONE 4

Scale
As indicated

A04.03.04

© 2009 Gensler



REFLECTED CEILING PLAN - LEVEL 3 - ZONE 4
SCALE: 1/8" = 1'-0"

A01.DS1