

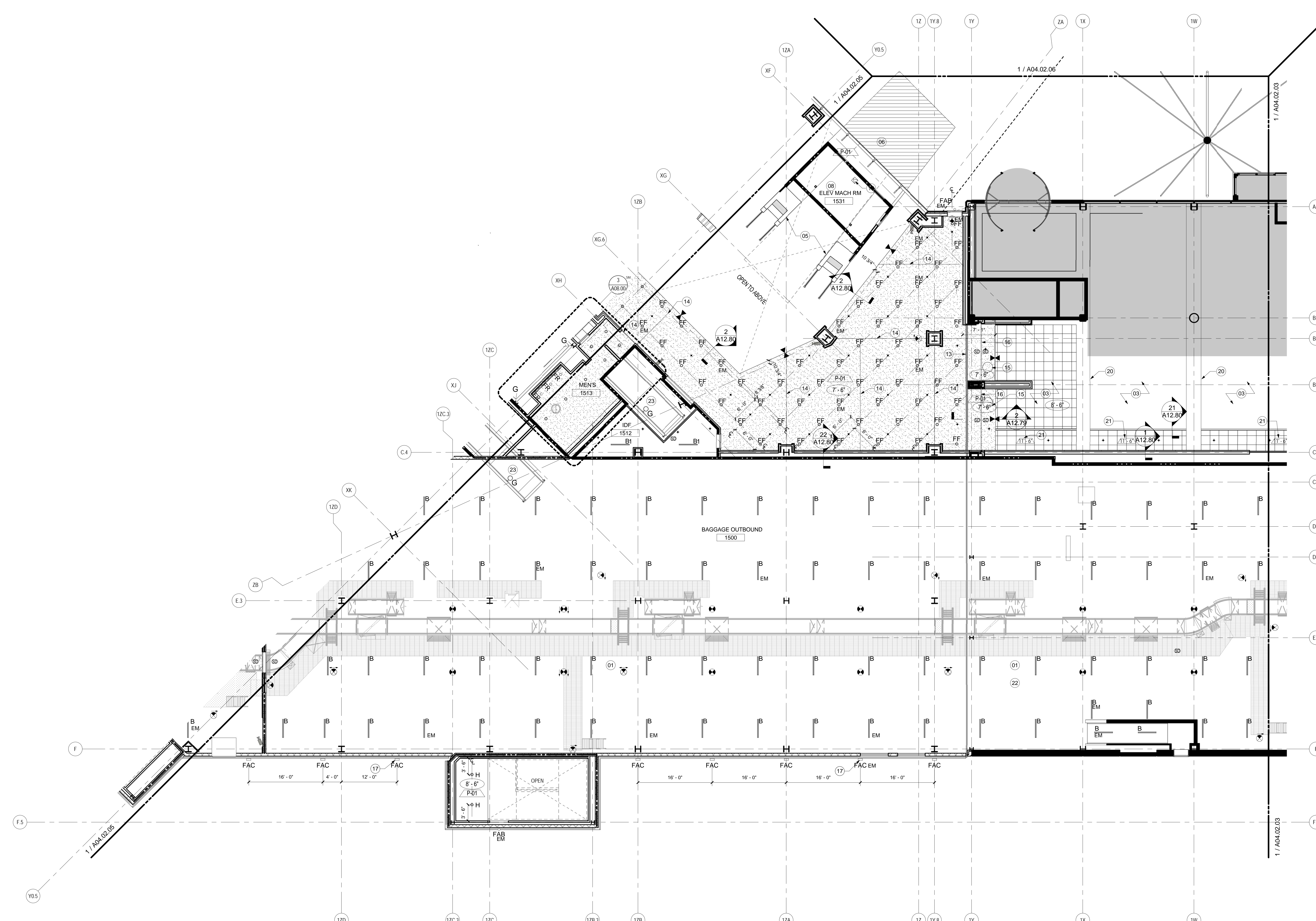
**SHEET NOTES**

- 01 NO CEILING
- 02 CEILING BY TENANT
- 03 EXISTING CEILING AND LIGHT FIXTURES TO REMAIN. RELOCATE SALVAGED LIGHT FIXTURES TO AREAS OF DEMOLITION AS REQUIRED. PATCH AND REPAIR AS REQUIRED AT AREAS OF DEMOLITION.
- 04 LIGHTING BY TENANT
- 05 ESCALATORS TO HAVE INTEGRAL LIGHTING STRIPS ON SIDE PANELS. PROVIDED BY ESCALATOR MANUFACTURER.
- 06 UNDERSIDE OF ESCALATOR TO BE METAL PANEL CLAD, M-02
- 07 REVOLVING DOOR LIGHTING BY DOOR MANUFACTURER. RE: PROJECT MANUAL
- 08 2-HR RATED GYPSUM BOARD CEILING
- 09 ALL EXISTING TO REMAIN. ROOM TO BE USED BY OWNER FOR BHS STORAGE AND MAINTENANCE
- 10 FOR CEILING IN THIS AREA REFER TO A04.01 SERIES
- 11 CANOPY ABOVE
- 12 PROVIDE LIGHT FIXTURE AT EVERY STAIR LANDING U.O.N. REFER TO ELECTRICAL DRAWINGS FOR MORE INFORMATION.
- 13 EXPANSION JOINT. RE: A02 SERIES FOR SCHEDULE
- 14 CONTROL JOINT. REFER TO 06/A12.80
- 15 ACCESS PANEL FOR FIRE SHUTTER. COORDINATE EXACT LOCATION OF PANEL WITH ARCHITECT.
- 16 FIRE SHUTTER
- 17 CENTERLINE FIXTURE TO ALIGN WITH CENTERLINE OF MULLION ABOVE. TYP. REFER TO PROJECT MANUAL FOR ADDITIONAL INFORMATION
- 18 SIGNAGE AND WAYFINDING. REFER TO A07 SERIES DRAWING FOR ADDITIONAL INFORMATION
- 19 12"x12" ACCESS PANEL ON ANGELED CEILING RE-FIRE PROTECTION DRAWINGS FOR MORE INFORMATION
- 20 EXISTING PRECAST ENCLOSED BEAM. PATCH AND REPAIR AS REQUIRED. PAINTED TO MATCH EXISTING
- 21 CEILING HEIGHT IS INDICATED FROM EXISTING TERMINAL
- 22 UPPER LEVEL LIGHTS AND EXIT SIGNS MOUNTING HEIGHTS TO BE COORDINATED WITH BAGGAGE EQUIPMENT
- 23 LIGHT FIXTURE AT ESCALATOR PIT MOUNTED PER MANUFACTURERS RECOMMENDATIONS
- 24 CONDUIT FOR CAMERA SHALL BE CONCEALED. FLEX TO RIGID TRANSITION SHALL BE RECESSED WITHIN PRECAST COLUMN COVERS AND/OR PARTITIONS. WEATHERPROOF ALL PENETRATIONS AS REQUIRED.

**Portland International Jetport**

1001 Westbrook Street  
Portland, Maine 04102

**Gensler**  
2020 K Street, Northwest  
Suite 200  
Washington DC 20006  
Telephone 202.721.5200  
Facsimile 202.872.8587

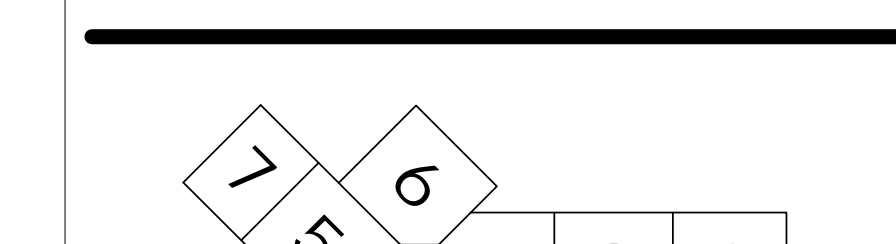


Date	Description
07/11/08	SCHEMATIC DESIGN
09/22/08	DESIGN DEVELOPMENT
12/03/08	75% CONSTRUCTION DOCUMENTS
01/23/09	95% CONSTRUCTION DOCUMENTS
10/26/09	ISSUED FOR PERMIT
11/12/09	ADDENDUM #2
145	09/01/11 ISSUED FOR CONSTRUCTION

**GENERAL NOTES**

- A. FOR LIGHTING TYPES, DETAILS AND INFORMATION REFER TO PROJECT MANUAL.
- B. FOR DIFFUSER INFORMATION AND QUANTITY, REFER TO PROJECT MANUAL.
- C. ALL GIBB CEILINGS TO BE PAINTED P-01 U.O.N.
- D. SPRINKLER HEADS ARE SHOWN FOR DESIGN INTENT ONLY. REFER TO FIRE PROTECTION DRAWINGS FOR ADDITIONAL INFORMATION.
- E. FOR CAMERA LOCATION AND MOUNTING DETAILS RE: IT, AND COMMUNICATION ENGINEERS DRAWINGS.
- F. DEVICES AND FIXTURES IN BAGGAGE HANDLING ROOMS TO BE COORDINATED WITH BHS EQUIPMENT FOR MOUNTING AND VISIBILITY
- G. ACT CEILINGS TO BE CENTERED IN EACH ROOM U.O.N.

**KEY PLAN**



Seal/Signature  
  
 Project Name  
 PWM Terminal Enhancement  
 Project Number  
 09.6395.000  
 Description  
 REFLECTED CEILING PLAN - LEVEL 2 - ZONE 4  
 Scale  
 As indicated  


**A04.02.04**  
 © 2009 Gensler