

# Portland International Jetport

1001 Westbrook Street  
Portland, Maine 04102

## Gensler

2020 K Street, Northwest  
Suite 200  
Washington, DC 20006  
Telephone 202.721.5200  
Facsimile 202.872.8587

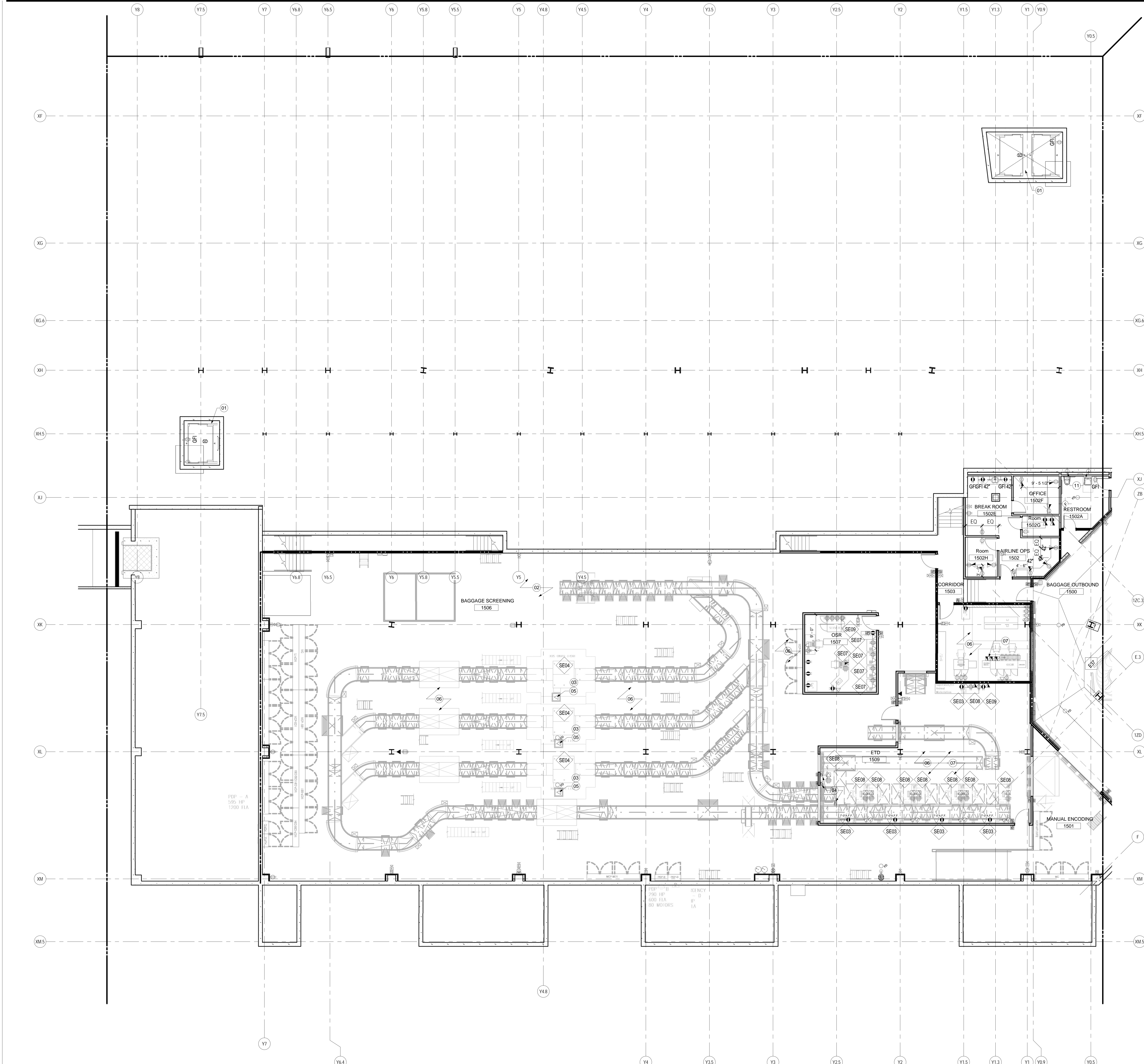
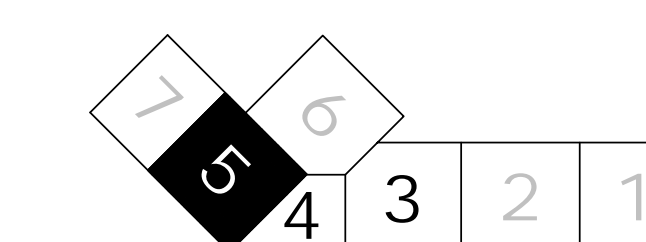
### SHEET NOTES

- 01 REFER TO ENGINEERING DRAWINGS, E02.SERIES FOR ADDITIONAL INFORMATION
- 02 REFER TO BAGGAGE HANDLING DRAWINGS FOR RELATED ELECTRICAL/DATA REQUIREMENTS AND ELECTRICAL DRAWINGS FOR INFORMATION ON POWER DROP POINTS
- 03 TSA EQUIPMENT TO BE HARDWIRED. COORDINATE AND CONFIRM DISCONNECT LOCATION WITH TSA. REFER TO ELECTRICAL DRAWINGS
- 04 PROVIDE STANCHION FOR CARD READER. COORDINATE LOCATION WITH TSA EQUIPMENT. REFER TO SECURITY AND BAGGAGE DRAWINGS
- 05 COORDINATE DATA CONNECTION LOCATION OF ELECTRICAL FIXTURES WITH TSA EQUIPMENT. REFER TO BAGGAGE SCREENING DOCUMENTS AND MANUFACTURER'S RECOMMENDATIONS FOR REFERENCE.
- 06 REFER TO SECURITY / IT DRAWINGS FOR DATA ACCESS POINT AND CABLE INFORMATION FOR SECURITY CAMERAS MOUNTED AT CEILING ABOVE
- 07 PROVIDE POWER/ DATA POLE AND RACEWAY TO BHS EQUIPMENT.
- 08 ALL EXISTING TO REMAIN. ROOM TO BE USED BY OWNER FOR BHS STORAGE AND MAINTENANCE
- 09 COORDINATE DEVICE LOCATIONS WITH ADJACENT PLUMBING PIPING
- 10 PROVIDE LINE ITEM ALLOWANCE FOR REMOVAL OF ELECTRICAL AND DATA FEEDS, DOGHOUSES AND STUB-UPS, ETC. AS REQUIRED IN THE EXISTING BAGGAGE SCREENING AREAS OF THE EXISTING TERMINAL
- 11 SIMPLEX OUTLET. RE: ELECTRICAL DRAWINGS FOR ADDITIONAL INFORMATION.

### GENERAL NOTES

- A COORDINATE ALL WALL MOUNTED DEVICES WITH ASSOCIATED PARTITION TYPES AND FIRE RATING REQUIREMENTS. SEE ALIGNMENT LOCATIONS OF DEVICES ON SHEET A00.13.
- B COORDINATE ALL CEILING MOUNTED DEVICES WITH ASSOCIATED CEILING TYPES, LIGHT FIXTURE AND EQUIPMENT DEPTHS AND ALL REQUIRED SYSTEMS CLEARANCES.
- C REFER TO EQUIPMENT SCHEDULE IN PROJECT MANUAL SECTION APPENDIX 'A'.
- D REFER TO ELECTRICAL DRAWINGS FOR OUTLET TYPES.
- E REFER TO ELECTRICAL, FIRE ALARM, IT AND SECURITY DRAWINGS, PROJECT MANUAL FOR ADDITIONAL INFORMATION.
- F REFER TO MANUFACTURER AND LOCAL CODE REQUIREMENTS FOR ELEVATOR AND ESCALATOR INSTALLATIONS.
- G REFER TO ELECTRICAL DRAWINGS FOR GFI OUTLET LOCATIONS.
- H PROVIDE ELECTRICAL ROUTING AND IT STUB-UP AT TICKET COUNTERS. 1 SET OF STUB UP FOR EVERY 4 COUNTERS. REFER TO ELECTRICAL AND IT DRAWINGS FOR CABLE AND CIRCUIT INFORMATION. SIZE STUB UP ACCORDINGLY.
- I PROVIDE WEATHER PROOF DEVICES AT LOCATIONS WHERE REQUIRED.
- J COORDINATE POWER/DATA ROUTING REQUIREMENTS WITH DOOR HARDWARE. RELAY TIE IN WITH FIRE ALARM SYSTEM AS INDICATED OR REQUIRED BY CODE. ALSO REFER TO SECURITY DRAWINGS.
- K REFER TO PARTITION TYPES FOR ADDITIONAL INFORMATION ON FIRE RATED ASSEMBLIES. FIRESTOPPING SHALL BE PROVIDED AS REQUIRED BY CODE.
- L COORDINATE ALL FLOOR BOXES, CORE DRILLS AND STUB-UPS, ETC. WITH RADIANT FLOORING LAYOUT AND INSTALLATION. DO NOT RUN CONDUITS WITHIN SLAB.

### KEY PLAN



Date	Description
09/22/08	DESIGN DEVELOPMENT
12/03/08	75% CONSTRUCTION DOCUMENTS
01/23/09	95% CONSTRUCTION DOCUMENTS
10/26/09	ISSUED FOR PERMIT
2	11/12/09 ADDENDUM #2
5	01/25/10 BULLETIN #2: TSA COMMENTS REVIEW
88	03/09/11 BULLETIN #79
145	08/01/11 ISSUED FOR CONSTRUCTION

Seal/Signature

Project Name  
PJM Terminal Enhancement

Project Number  
09.6395.000

Description  
POWER & COMMUNICATION PLAN - LEVEL 1 - ZONE 5

Scale  
As indicated

**A03.01.05**

© 2009 Gensler