

SHEET NOTES

- 01 CONTRACTION/CONSTRUCTION JOINT. RE: STRUCTURAL DRAWINGS FOR MORE INFORMATION.
- 02 ARCHITECTURAL EXPOSED CONCRETE COLUMN WITH CS-02 CONCRETE SEALER. RE: PROJECT MANUAL SECTION 03 33 00
- 03 FLIGHT INFORMATION DISPLAY SYSTEM
- 04 INTERNATIONAL INBOUND FENCE W/ SLIDING DOOR
- 05 DOCK LEVELER WITH ASSOCIATED DOCK BUMPERS
- 06 TRENCH DRAIN AT BOTTOM OF RAMP. REFER TO ENGINEERING DRAWINGS C02 SERIES
- 07 TRASH COMPACTOR (NIC)
- 08 FIRE SHUTTER
- 09 TICKET COUNTER MILLWORK AND BAGWELL
- 10 SIGNAGE PYLON. RE: A07 SERIES FOR MORE INFORMATION
- 11 BAGGAGE EQUIPMENT. RE: BAGGAGE DRAWINGS FOR MORE INFORMATION.
- 12 FIRE/SECURITY OVERHEAD COILING DOOR. RE: BAGGAGE DRAWINGS FOR MORE INFORMATION. COORDINATE WALL AND FIRE/SECURITY DOOR LOCATIONS WITH BAGGAGE DRAWINGS
- 13 PIPE BOLLARD. RE: DETAIL 11/A12.15
- 14 CHAIN LINK FENCE WITH PRIVACY SLATS
- 15 POTABLE WATER CABINET. RE: MEP DRAWINGS FOR MORE INFORMATION
- 16 ENCLOSURE FOR ESCALATOR PIT ABOVE TO BE 2HR RATED GYPSUM PARTITION TYPE B3A AT WALLS. RE: STRUCTURAL DRAWINGS FOR MORE INFORMATION.
- 17 LOCATION OF PBB DISCONNECT SWITCH. RE: ELECTRICAL DRAWINGS FOR MORE INFORMATION.
- 18 PBB PEDESTAL. RE: STRUCTURAL DRAWINGS FOR FOUNDATION DETAIL AND SIZE.
- 19 LOCATION OF DOCK LEVELER CONTROL. RE: PROJECT MANUAL FOR MORE INFORMATION.
- 20 ALL EXISTING TO REMAIN. ROOM TO BE USED BY OWNER FOR BHS STORAGE AND MAINTENANCE
- 21 LINE OF FIXED LINK ABOVE.
- 22 LINE OF SOFFIT ABOVE.
- 23 LINE OF CANOPY ABOVE.
- 24 EXISTING PBB PEDESTAL TO REMAIN.
- 25 FIN TUBE ENCLOSURE. RE: MECHANICAL DRAWINGS FOR FIN TUBE INFORMATION.
- 26 HATCHED AREA INDICATES AREA OF 1/2" SLAB DEPRESSION FOR INSTALLATION OF REVOLVING DOOR AND WALK OFF MAT.
- 27 SMARTE CARTES. RE: A03.02.05 AND ELECTRICAL DRAWINGS FOR MORE INFORMATION.
- 29 OPENING(S) FOR CONDUIT RUNS EXITING AND ENTERING THE ELECTRICAL CLOSET. COORDINATE WITH STRUCTURE.
- 30 2-HR RATED CEILING ABOVE (LIGHTLY HATCHED AREA). REFER TO REFLECTED CEILING PLAN.
- 31 PROVIDE WALL MOUNTED HANDRAILS AT RAMP MOUNTED AT 3'-0" TO TOP OF RAIL. RE: A10.04 FOR DETAILS
- 32 PATCH, INFILL, REPAIR HOLES IN EXISTING CONCRETE COLUMNS WHERE AIRLINE SIGNAGE WAS DEMOLISHED. PAINT COLUMNS TO MATCH EXISTING FINISH. RE: SECTION 09 91 03 FOR EXTERIOR PAINTING IN PROJECT MANUAL.
- 33 EXISTING BRICK SIDEWALK TO BE REPAIRED, REPLACED AND FILLED IN AS REQUIRED TO MEET NEW CONCRETE SIDEWALK. LINE OF TRANSITION TO FOLLOW LINE OF BUILDING ABOVE. RE: CIVIL DRAWINGS FOR MORE INFORMATION.
- 34 RETAINING WALL AT TRANSFORMER. RE: CIVIL DRAWINGS FOR ADDITIONAL INFORMATION
- 36 PROVIDE STEEL TUBE GUARD RAIL 3'-6" HIGH AT RETAINING WALLS FOR THE LENGTH OF THE WALL. VERTICALS TO BE 4'-0" O.C. AND SLEEVED INTO CONCRETE RETAINING WALL. RE: DETAIL 14/A10.04 FOR SIMILAR GUARD RAIL DETAIL.
- 37 PROVIDE ROUGH-INS FOR (1) WC AND (1) LAV. FOR TWO SEPARATE ADA ACCESSIBLE RESTROOMS.

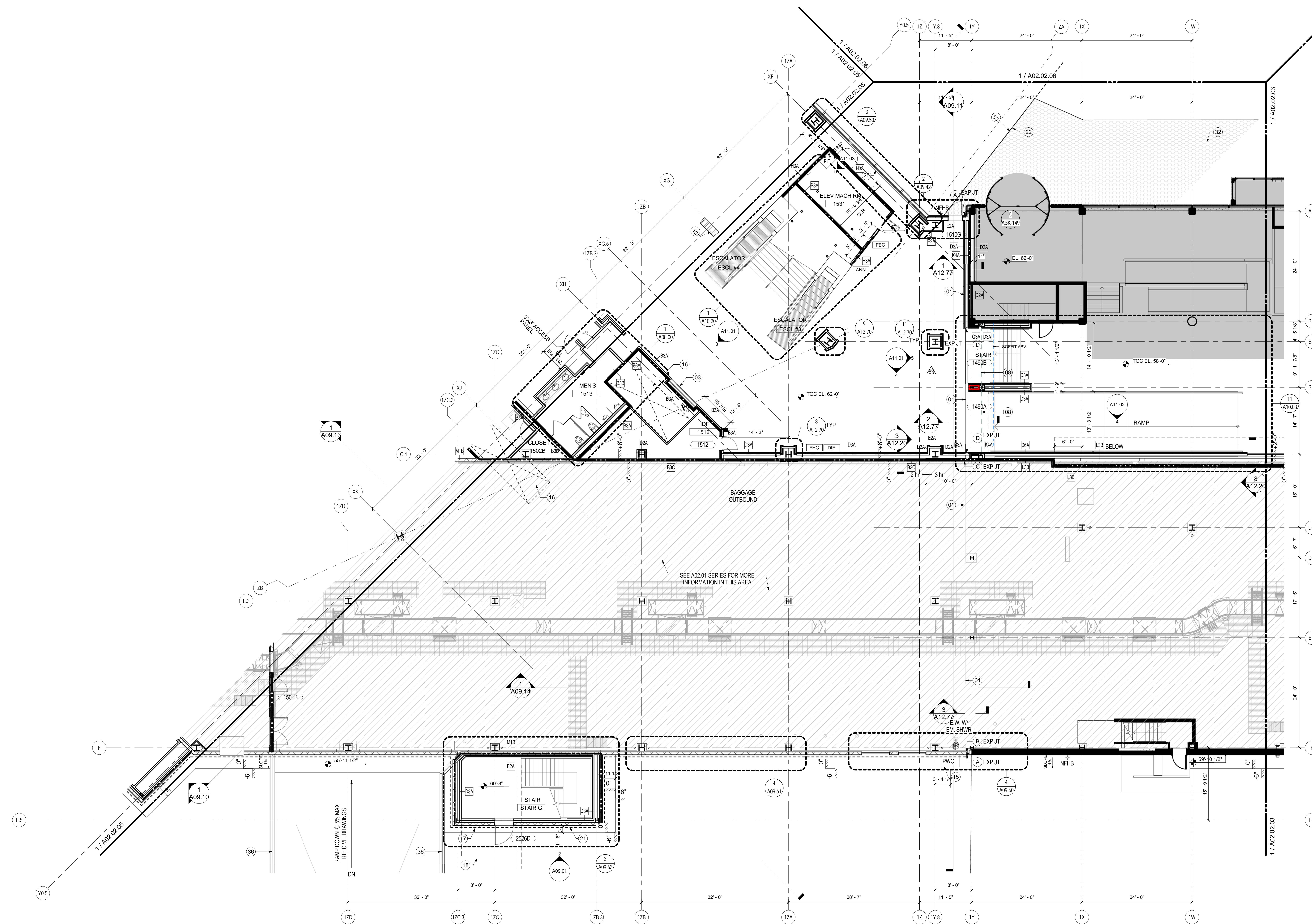
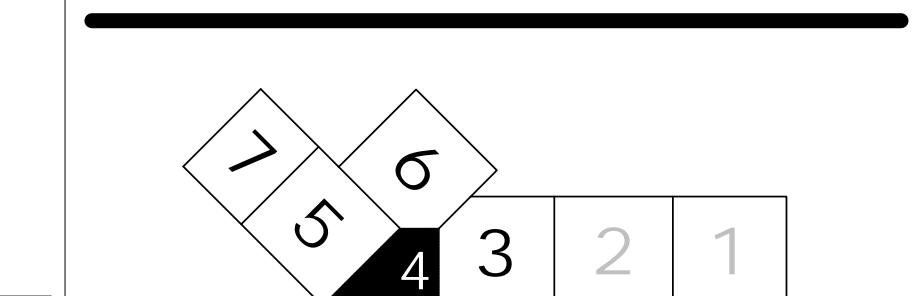
EXPANSION JOINTS

- (A) MODEL: SEISMIC COLORSEAL 4" (COLOR: BRONZE) MFG: EMSEAL
- (B) MODEL: FWS 400 (COLOR: GRAY) MFG: C/S GROUP
- (C) MODEL: FWS 400 MFX-4W FIRE BARRIER (COLOR: GRAY) MFG: C/S GROUP
- (D) MODEL: FWS 400 (COLOR: WHITE) MFG: C/S GROUP
- (E) MODEL: AFW 400 MFG: C/S GROUP
- (F) MODEL: WFR3 (COLOR: WHITE) MFG: EMSEAL OR EQUIVALENT
- (G) MODEL: GTPM-400 HD MFG: C/S GROUP
- (H) MODEL: FWSC-400 (COLOR: WHITE) MFG: C/S GROUP
- (J) MODEL: BRJ-400 W/ FIRE BARRIER MFG: C/S GROUP
- (K) MODEL: BRJW-400 W/ FIRE BARRIER MFG: C/S GROUP

GENERAL NOTES

- A ALL DIMENSIONS ARE TO FINISHED FACE OF MATERIAL. COORDINATE WITH FINISH THICKNESS.
- B AP LOCKABLE FLUSH METAL ACCESS PANEL 12"x12" PAINTED TO MATCH WALL COLOR.

KEY PLAN



CONSTRUCTION PLAN - LEVEL 2 - ZONE 4
SCALE: 1/8" = 1'-0"

A01.DS1

Date	Description
07/11/08	SCHEMATIC DESIGN
09/22/08	DESIGN DEVELOPMENT
12/03/08	75% CONSTRUCTION DOCUMENTS
01/23/09	95% CONSTRUCTION DOCUMENTS
10/26/09	ISSUED FOR PERMIT
2 11/12/09	ADDENDUM #2
145 09/01/11	ISSUED FOR CONSTRUCTION

Seal/Signature

Project Name
PJM Terminal Enhancement

Project Number
09.6395.000

Description
CONSTRUCTION PLAN - LEVEL 2 - ZONE 4

Scale
As indicated

A02.02.04

© 2009 Gensler