

Corporate Office
 86 Industrial Park Rd, Ste 4
 Saco, ME 04072
 207-286-8008 · Fax 207-286-2882



Branch Office
 100 International Dr, Ste 170
 Portsmouth, NH 03801
 603-427-0244 · Fax 603-430-2041

ULTRASONIC EXAMINATION REPORT

Project Name: PORTLAND JET PORT
 Client/Project #: 557-14
 General Contractor: TURNER CONSTRUCTION
 Welding Contractor: JF STEENS

Date: 6-22-11
 Time on Site: 2.5
 Mileage: 26
 Tolls: 2.00

Weld Process: PCAW
 Weld Designation (AWS): TC-U4A

Location: XD.7/48.5, XD.7/48, XD.7/47.5
XD.7/46.5

Weld Identification Area	Transducer Angle	Form Face	Leg	Decibels				Length	Discontinuity			Remarks	
				Indication Level	Reference Level	Attenuation Factor	Indication Rating		Angular Distance (Sound Path)	Depth from "A" Surface	Distance		
											From X		From Y
A	B	C	D										
NORTH XD.7/48.5	70	A			79							TOP & BOTTOM ACCEPT	
SOUTH XD.7/48.5												TOP & BOTTOM ACCEPT	
NORTH XD.7/48												TOP & BOTTOM ACCEPT	
SOUTH XD.7/48												TOP & BOTTOM ACCEPT	
NORTH XD.7/47.5												TOP & BOTTOM ACCEPT	
SOUTH XD.7/47.5												TOP & BOTTOM ACCEPT	
NORTH XD.7/46.5												TOP & BOTTOM ACCEPT	
SOUTH XD.7/46.5												TOP & BOTTOM ACCEPT	

Weld Identification Area	Transducer Angle	Form Face	Leg	Decibels				Length	Discontinuity			Remarks	
				Indication Level	Reference Level	Attenuation Factor	Indication Rating		Angular Distance (Sound Path)	Depth from "A" Surface	Distance		
											From X		From Y
A	B	C	D										

RWG&A personnel are represented on site solely to observe work of the identified contractors, to form opinions about the adequacy of those operations, and to report those opinions to RWG&A's client. The presence and activities of our field representative do not relieve any contractor from their obligations to meet contractual requirements. The contractor retains sole responsibility of site safety and the methods, operations, and sequences of construction.

Observations were verbally reported to:

STAVIN WINNER, TURNER CONSTRUCTION

Construction Technologist/CWI:

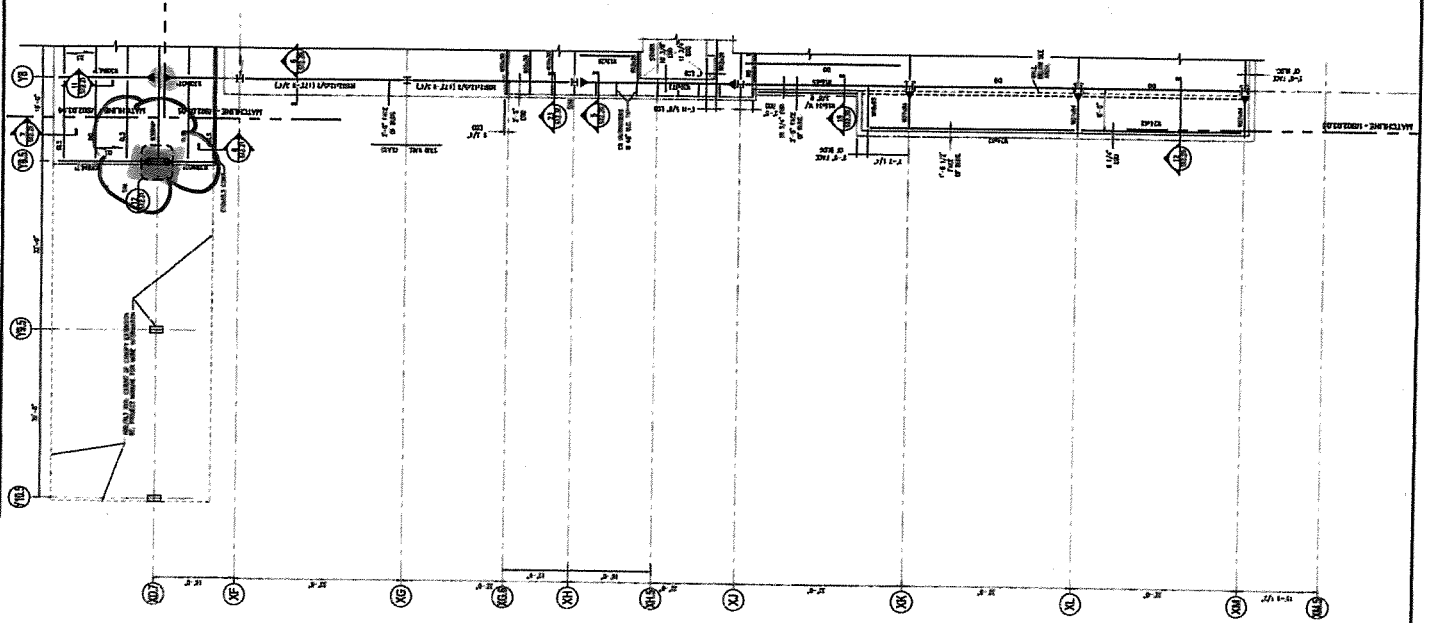
George S. Farrell

Print Name/Title

Certification #:

Project: Terminal Enhancement - Portland International Jetport
 Project No.: 557-14

Date: _____
 Technologist: _____



- SHEET NOTES**
- 1. ALL WORK SHALL BE IN ACCORDANCE WITH THE LATEST EDITIONS OF THE AIA, AS SHOWN ON THIS SHEET.
 - 2. ALL WORK SHALL BE IN ACCORDANCE WITH THE LATEST EDITIONS OF THE AIA, AS SHOWN ON THIS SHEET.
 - 3. ALL WORK SHALL BE IN ACCORDANCE WITH THE LATEST EDITIONS OF THE AIA, AS SHOWN ON THIS SHEET.
 - 4. ALL WORK SHALL BE IN ACCORDANCE WITH THE LATEST EDITIONS OF THE AIA, AS SHOWN ON THIS SHEET.
 - 5. ALL WORK SHALL BE IN ACCORDANCE WITH THE LATEST EDITIONS OF THE AIA, AS SHOWN ON THIS SHEET.
 - 6. ALL WORK SHALL BE IN ACCORDANCE WITH THE LATEST EDITIONS OF THE AIA, AS SHOWN ON THIS SHEET.
 - 7. ALL WORK SHALL BE IN ACCORDANCE WITH THE LATEST EDITIONS OF THE AIA, AS SHOWN ON THIS SHEET.
 - 8. ALL WORK SHALL BE IN ACCORDANCE WITH THE LATEST EDITIONS OF THE AIA, AS SHOWN ON THIS SHEET.
 - 9. ALL WORK SHALL BE IN ACCORDANCE WITH THE LATEST EDITIONS OF THE AIA, AS SHOWN ON THIS SHEET.
 - 10. ALL WORK SHALL BE IN ACCORDANCE WITH THE LATEST EDITIONS OF THE AIA, AS SHOWN ON THIS SHEET.
 - 11. ALL WORK SHALL BE IN ACCORDANCE WITH THE LATEST EDITIONS OF THE AIA, AS SHOWN ON THIS SHEET.
 - 12. ALL WORK SHALL BE IN ACCORDANCE WITH THE LATEST EDITIONS OF THE AIA, AS SHOWN ON THIS SHEET.
 - 13. ALL WORK SHALL BE IN ACCORDANCE WITH THE LATEST EDITIONS OF THE AIA, AS SHOWN ON THIS SHEET.
 - 14. ALL WORK SHALL BE IN ACCORDANCE WITH THE LATEST EDITIONS OF THE AIA, AS SHOWN ON THIS SHEET.
 - 15. ALL WORK SHALL BE IN ACCORDANCE WITH THE LATEST EDITIONS OF THE AIA, AS SHOWN ON THIS SHEET.
 - 16. ALL WORK SHALL BE IN ACCORDANCE WITH THE LATEST EDITIONS OF THE AIA, AS SHOWN ON THIS SHEET.
 - 17. ALL WORK SHALL BE IN ACCORDANCE WITH THE LATEST EDITIONS OF THE AIA, AS SHOWN ON THIS SHEET.
 - 18. ALL WORK SHALL BE IN ACCORDANCE WITH THE LATEST EDITIONS OF THE AIA, AS SHOWN ON THIS SHEET.
 - 19. ALL WORK SHALL BE IN ACCORDANCE WITH THE LATEST EDITIONS OF THE AIA, AS SHOWN ON THIS SHEET.
 - 20. ALL WORK SHALL BE IN ACCORDANCE WITH THE LATEST EDITIONS OF THE AIA, AS SHOWN ON THIS SHEET.

Portland International
 Jetport
 1801 Westbrook Street
 Portland, Maine 04102

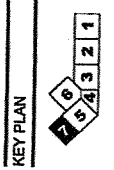
Genster
OB&E ASSOCIATES, INC.
 Engineers • Architects • Interiors • Construction Management

1	DATE	DESCRIPTION
2	DATE	DESCRIPTION
3	DATE	DESCRIPTION
4	DATE	DESCRIPTION
5	DATE	DESCRIPTION



PROJECT: PORTLAND INTERNATIONAL JETPORT
 SHEET: FRAMING PLAN - LEVEL 3 - ZONE 7
 SCALE: 1/8" = 1'-0"

S02.03.07



FRAMING PLAN - LEVEL 3 - ZONE 7
 SCALE: 1/8" = 1'-0"

Corporate Office
 86 Industrial Park Rd, Ste 4
 Saco, ME 04072
 207-286-8008 · Fax 207-286-2882



Branch Office
 100 International Dr, Ste 170
 Portsmouth, NH 03801
 603-427-0244 · Fax 603-430-2041

ULTRASONIC EXAMINATION REPORT

Project Name: PORTLAND JETPORT
 Client/Project #: 557-14
 General Contractor: TURNER CONSTRUCTION
 Welding Contractor: JF STERNS

Date: 6-23-11
 Time on Site: 2.5
 Mileage: 26
 Tolls: 2.00

Weld Process: FCAW
 Weld Designation (AWS): TC-44A

Location: XD.7/Y5.5, XD.7/Y6, XD.7/Y7, XD.7/Y8

Weld Identification Area	Transducer Angle	Form Face	Leg	Decibels				Discontinuity			Remarks		
				Indication Level	Reference Level	Attenuation Factor	Indication Rating	Length	Angular Distance (Sound Path)	Depth from "A" Surface		Distance	
												From X	From Y
A	B	C	D										
NORTH XD.7/Y5.5	70		A		79							TOP & BOTTOM ACCEPT	
SOUTH XD.7/Y5.5												TOP & BOTTOM ACCEPT	
NORTH XD.7/Y6												TOP & BOTTOM ACCEPT	
SOUTH XD.7/Y6												TOP & BOTTOM ACCEPT	
NORTH XD.7/Y7												TOP & BOTTOM ACCEPT	
SOUTH XD.7/Y7												TOP & BOTTOM ACCEPT	
NORTH XD.7/Y8												TOP & BOTTOM ACCEPT	
SOUTH XD.7/Y8												TOP & BOTTOM ACCEPT	

Weld Identification Area	Transducer Angle	Form Face	Leg	Decibels				Length	Discontinuity			Remarks	
				Indication Level	Reference Level	Attenuation Factor	Indication Rating		Angular Distance (Sound Path)	Depth from "A" Surface	Distance		
											From X		From Y
A	B	C	D										

RWG&A personnel are represented on site solely to observe work of the identified contractors, to form opinions about the adequacy of those operations, and to report those opinions to RWG&A's client. The presence and activities of our field representative do not relieve any contractor from their obligations to meet contractual requirements. The contractor retains sole responsibility of site safety and the methods, operations, and sequences of construction.

Observations were verbally reported to:

SPAWN KINNECK, TURNER CONSTRUCTION

Construction Technologist/CWI:

GEORGE MORRIS

Print Name/Title

Certification #:

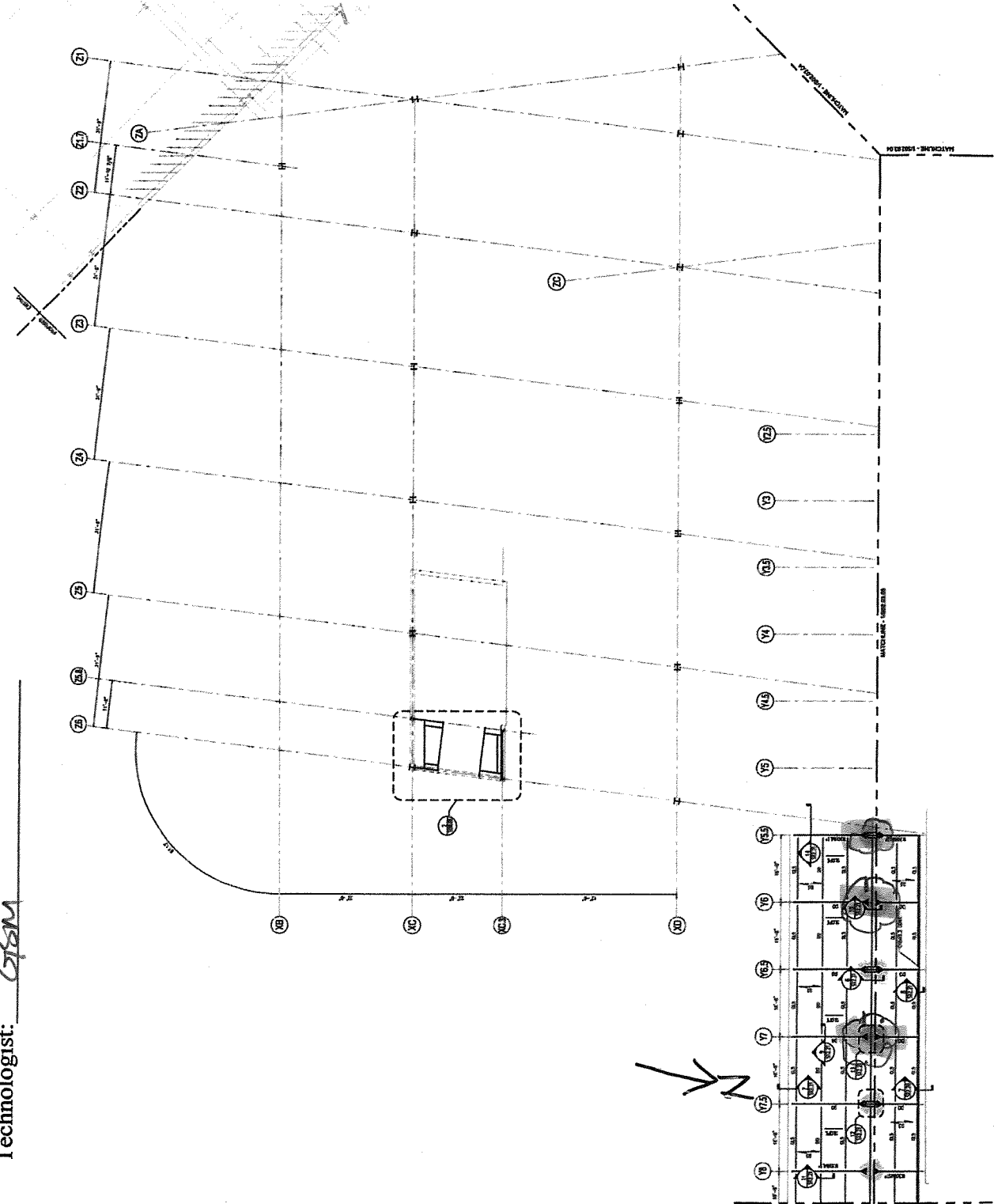
Project: Terminal Enhancement - Portland International Jetport
 Project No.: 557-14
 Date: 6-23-11
 Technologist: GFM

Portland International
 Jetport
 1881 Westbrook Street
 Portland, Maine 04102

Gensler
DBSI ASSOCIATES INC.
 engineers • architects • interior • construction managers

1000 South Main
 Suite 200
 Portland, ME 04101
 Phone: 207.633.8800

SHEET NOTES
 1. ALL WORK SHALL BE IN ACCORDANCE WITH THE 2009 INTERNATIONAL BUILDING CODE (IBC) AND THE 2009 INTERNATIONAL MECHANICAL AND ELECTRICAL CODE (IMC).
 2. ALL WORK SHALL BE IN ACCORDANCE WITH THE 2009 INTERNATIONAL PLUMBING AND MECHANICAL CODE (IPC) AND THE 2009 INTERNATIONAL ELECTRICAL CODE (IEC).
 3. ALL WORK SHALL BE IN ACCORDANCE WITH THE 2009 INTERNATIONAL FIRE AND SAFETY CODE (IFSC).
 4. ALL WORK SHALL BE IN ACCORDANCE WITH THE 2009 INTERNATIONAL ENERGY CONSERVATION CODE (IECC).
 5. ALL WORK SHALL BE IN ACCORDANCE WITH THE 2009 INTERNATIONAL SMOKE AND ALARM CODE (ISAC).
 6. ALL WORK SHALL BE IN ACCORDANCE WITH THE 2009 INTERNATIONAL ACCESSIBILITY STANDARDS AND GUIDELINES (IAS).
 7. ALL WORK SHALL BE IN ACCORDANCE WITH THE 2009 INTERNATIONAL GREEN BUILDING CONSTRUCTION CODE (IGBC).
 8. ALL WORK SHALL BE IN ACCORDANCE WITH THE 2009 INTERNATIONAL SUSTAINABLE DESIGN AND CONSTRUCTION CODE (ISDCC).
 9. ALL WORK SHALL BE IN ACCORDANCE WITH THE 2009 INTERNATIONAL WELL-BEING AND PRODUCTIVITY CODE (IWPC).
 10. ALL WORK SHALL BE IN ACCORDANCE WITH THE 2009 INTERNATIONAL COMMUNITY DEVELOPMENT AND URBAN DESIGN CODE (ICDUD).
 11. ALL WORK SHALL BE IN ACCORDANCE WITH THE 2009 INTERNATIONAL TRANSPORTATION AND TRAVEL CODE (ITT).
 12. ALL WORK SHALL BE IN ACCORDANCE WITH THE 2009 INTERNATIONAL INFRASTRUCTURE AND TRANSPORTATION CODE (IIT).
 13. ALL WORK SHALL BE IN ACCORDANCE WITH THE 2009 INTERNATIONAL AIRPORT AND AIRPORT TERMINAL CODE (IAAT).
 14. ALL WORK SHALL BE IN ACCORDANCE WITH THE 2009 INTERNATIONAL AIRPORT AND AIRPORT TERMINAL CODE (IAAT).



GENERAL NOTES
 1. ALL WORK SHALL BE IN ACCORDANCE WITH THE 2009 INTERNATIONAL BUILDING CODE (IBC) AND THE 2009 INTERNATIONAL MECHANICAL AND ELECTRICAL CODE (IMC).
 2. ALL WORK SHALL BE IN ACCORDANCE WITH THE 2009 INTERNATIONAL PLUMBING AND MECHANICAL CODE (IPC) AND THE 2009 INTERNATIONAL ELECTRICAL CODE (IEC).
 3. ALL WORK SHALL BE IN ACCORDANCE WITH THE 2009 INTERNATIONAL FIRE AND SAFETY CODE (IFSC).
 4. ALL WORK SHALL BE IN ACCORDANCE WITH THE 2009 INTERNATIONAL ENERGY CONSERVATION CODE (IECC).
 5. ALL WORK SHALL BE IN ACCORDANCE WITH THE 2009 INTERNATIONAL SMOKE AND ALARM CODE (ISAC).
 6. ALL WORK SHALL BE IN ACCORDANCE WITH THE 2009 INTERNATIONAL ACCESSIBILITY STANDARDS AND GUIDELINES (IAS).
 7. ALL WORK SHALL BE IN ACCORDANCE WITH THE 2009 INTERNATIONAL GREEN BUILDING CONSTRUCTION CODE (IGBC).
 8. ALL WORK SHALL BE IN ACCORDANCE WITH THE 2009 INTERNATIONAL SUSTAINABLE DESIGN AND CONSTRUCTION CODE (ISDCC).
 9. ALL WORK SHALL BE IN ACCORDANCE WITH THE 2009 INTERNATIONAL WELL-BEING AND PRODUCTIVITY CODE (IWPC).
 10. ALL WORK SHALL BE IN ACCORDANCE WITH THE 2009 INTERNATIONAL COMMUNITY DEVELOPMENT AND URBAN DESIGN CODE (ICDUD).
 11. ALL WORK SHALL BE IN ACCORDANCE WITH THE 2009 INTERNATIONAL TRANSPORTATION AND TRAVEL CODE (ITT).
 12. ALL WORK SHALL BE IN ACCORDANCE WITH THE 2009 INTERNATIONAL INFRASTRUCTURE AND TRANSPORTATION CODE (IIT).
 13. ALL WORK SHALL BE IN ACCORDANCE WITH THE 2009 INTERNATIONAL AIRPORT AND AIRPORT TERMINAL CODE (IAAT).
 14. ALL WORK SHALL BE IN ACCORDANCE WITH THE 2009 INTERNATIONAL AIRPORT AND AIRPORT TERMINAL CODE (IAAT).

KEY PLAN
 1 2 3 4 5 6 7 8 9 10 11 12 13 14 15 16 17 18 19 20 21 22 23 24 25 26 27 28 29 30 31 32 33 34 35 36 37 38 39 40 41 42 43 44 45 46 47 48 49 50 51 52 53 54 55 56 57 58 59 60 61 62 63 64 65 66 67 68 69 70 71 72 73 74 75 76 77 78 79 80 81 82 83 84 85 86 87 88 89 90 91 92 93 94 95 96 97 98 99 100

Scale: 1/8" = 1'-0"
 S02.03.06

FRAMING PLAN - LEVEL 3 - ZONE 6
 SCALE: 1/8" = 1'-0"

Project: Terminal Enhancement - Portland International Jetport

Project No.: 557-14

Date: 6-23-11

Technologist: GEM

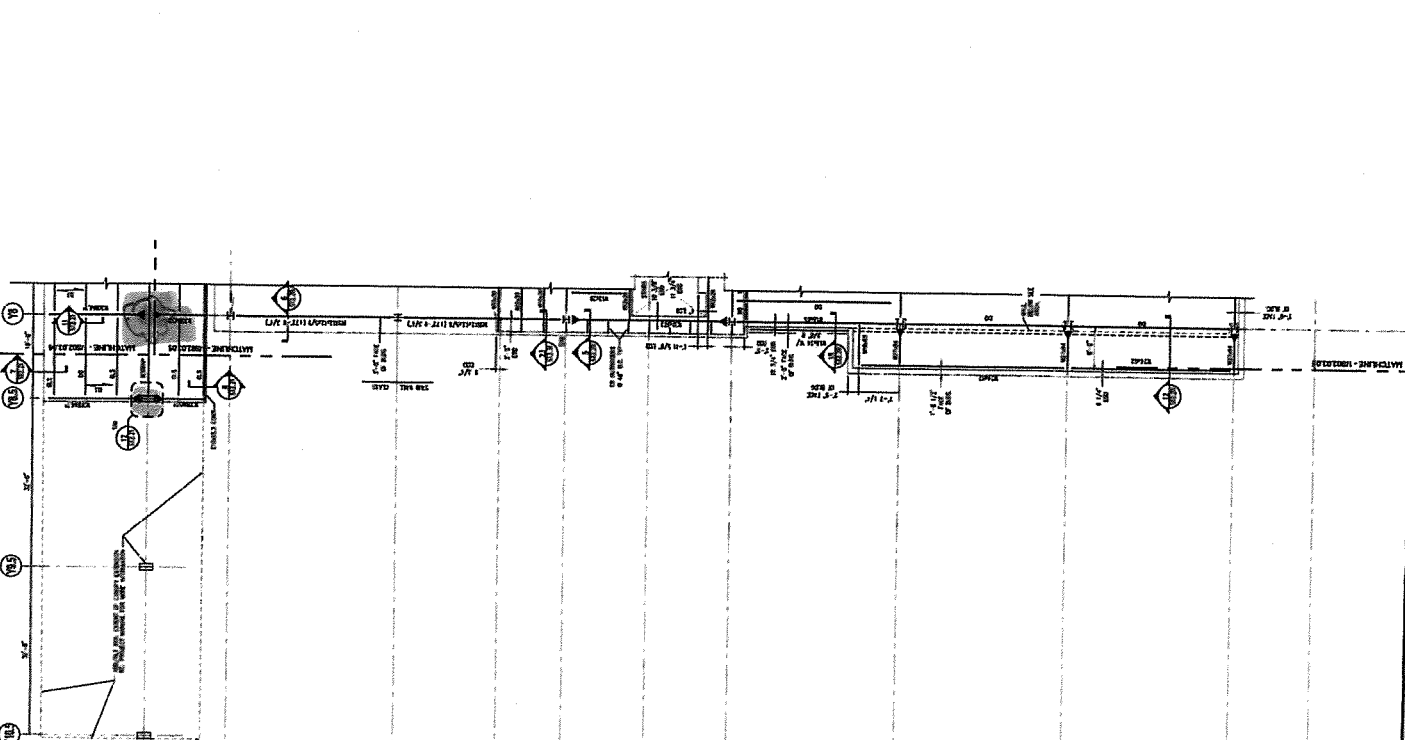
Portland International
Jetport
1801 Westwood Street
Portland, Maine 04112

Gensler

WEST ASSOCIATES, INC.
1000 Broadway, Suite 200
Portland, ME 04102
Phone: 207.633.2822

SHEET NOTES
1. ALL WORK SHALL BE IN ACCORDANCE WITH THE LATEST EDITIONS OF THE BUILDING CODES OF MAINE, AS APPLICABLE.
2. ALL WORK SHALL BE IN ACCORDANCE WITH THE LATEST EDITIONS OF THE INTERNATIONAL BUILDING CODES, AS APPLICABLE.
3. ALL WORK SHALL BE IN ACCORDANCE WITH THE LATEST EDITIONS OF THE MECHANICAL, ELECTRICAL AND PLUMBING CODES, AS APPLICABLE.
4. ALL WORK SHALL BE IN ACCORDANCE WITH THE LATEST EDITIONS OF THE NATIONAL FIRE PROTECTION ASSOCIATION (NFPA) CODES, AS APPLICABLE.
5. ALL WORK SHALL BE IN ACCORDANCE WITH THE LATEST EDITIONS OF THE AMERICAN INSTITUTE OF ARCHITECTS (AIA) CODES, AS APPLICABLE.
6. ALL WORK SHALL BE IN ACCORDANCE WITH THE LATEST EDITIONS OF THE AMERICAN SOCIETY OF MECHANICAL ENGINEERS (ASME) CODES, AS APPLICABLE.
7. ALL WORK SHALL BE IN ACCORDANCE WITH THE LATEST EDITIONS OF THE AMERICAN SOCIETY OF CIVIL ENGINEERS (ASCE) CODES, AS APPLICABLE.
8. ALL WORK SHALL BE IN ACCORDANCE WITH THE LATEST EDITIONS OF THE AMERICAN SOCIETY OF ELECTRICAL ENGINEERS (ASEE) CODES, AS APPLICABLE.
9. ALL WORK SHALL BE IN ACCORDANCE WITH THE LATEST EDITIONS OF THE AMERICAN SOCIETY OF MECHANICAL ENGINEERS (ASME) CODES, AS APPLICABLE.
10. ALL WORK SHALL BE IN ACCORDANCE WITH THE LATEST EDITIONS OF THE AMERICAN SOCIETY OF CIVIL ENGINEERS (ASCE) CODES, AS APPLICABLE.
11. ALL WORK SHALL BE IN ACCORDANCE WITH THE LATEST EDITIONS OF THE AMERICAN SOCIETY OF ELECTRICAL ENGINEERS (ASEE) CODES, AS APPLICABLE.
12. ALL WORK SHALL BE IN ACCORDANCE WITH THE LATEST EDITIONS OF THE AMERICAN SOCIETY OF MECHANICAL ENGINEERS (ASME) CODES, AS APPLICABLE.
13. ALL WORK SHALL BE IN ACCORDANCE WITH THE LATEST EDITIONS OF THE AMERICAN SOCIETY OF CIVIL ENGINEERS (ASCE) CODES, AS APPLICABLE.
14. ALL WORK SHALL BE IN ACCORDANCE WITH THE LATEST EDITIONS OF THE AMERICAN SOCIETY OF ELECTRICAL ENGINEERS (ASEE) CODES, AS APPLICABLE.
15. ALL WORK SHALL BE IN ACCORDANCE WITH THE LATEST EDITIONS OF THE AMERICAN SOCIETY OF MECHANICAL ENGINEERS (ASME) CODES, AS APPLICABLE.
16. ALL WORK SHALL BE IN ACCORDANCE WITH THE LATEST EDITIONS OF THE AMERICAN SOCIETY OF CIVIL ENGINEERS (ASCE) CODES, AS APPLICABLE.
17. ALL WORK SHALL BE IN ACCORDANCE WITH THE LATEST EDITIONS OF THE AMERICAN SOCIETY OF ELECTRICAL ENGINEERS (ASEE) CODES, AS APPLICABLE.
18. ALL WORK SHALL BE IN ACCORDANCE WITH THE LATEST EDITIONS OF THE AMERICAN SOCIETY OF MECHANICAL ENGINEERS (ASME) CODES, AS APPLICABLE.
19. ALL WORK SHALL BE IN ACCORDANCE WITH THE LATEST EDITIONS OF THE AMERICAN SOCIETY OF CIVIL ENGINEERS (ASCE) CODES, AS APPLICABLE.
20. ALL WORK SHALL BE IN ACCORDANCE WITH THE LATEST EDITIONS OF THE AMERICAN SOCIETY OF ELECTRICAL ENGINEERS (ASEE) CODES, AS APPLICABLE.

GENERAL NOTES
1. ALL WORK SHALL BE IN ACCORDANCE WITH THE LATEST EDITIONS OF THE BUILDING CODES OF MAINE, AS APPLICABLE.
2. ALL WORK SHALL BE IN ACCORDANCE WITH THE LATEST EDITIONS OF THE INTERNATIONAL BUILDING CODES, AS APPLICABLE.
3. ALL WORK SHALL BE IN ACCORDANCE WITH THE LATEST EDITIONS OF THE MECHANICAL, ELECTRICAL AND PLUMBING CODES, AS APPLICABLE.
4. ALL WORK SHALL BE IN ACCORDANCE WITH THE LATEST EDITIONS OF THE NATIONAL FIRE PROTECTION ASSOCIATION (NFPA) CODES, AS APPLICABLE.
5. ALL WORK SHALL BE IN ACCORDANCE WITH THE LATEST EDITIONS OF THE AMERICAN INSTITUTE OF ARCHITECTS (AIA) CODES, AS APPLICABLE.
6. ALL WORK SHALL BE IN ACCORDANCE WITH THE LATEST EDITIONS OF THE AMERICAN SOCIETY OF MECHANICAL ENGINEERS (ASME) CODES, AS APPLICABLE.
7. ALL WORK SHALL BE IN ACCORDANCE WITH THE LATEST EDITIONS OF THE AMERICAN SOCIETY OF CIVIL ENGINEERS (ASCE) CODES, AS APPLICABLE.
8. ALL WORK SHALL BE IN ACCORDANCE WITH THE LATEST EDITIONS OF THE AMERICAN SOCIETY OF ELECTRICAL ENGINEERS (ASEE) CODES, AS APPLICABLE.
9. ALL WORK SHALL BE IN ACCORDANCE WITH THE LATEST EDITIONS OF THE AMERICAN SOCIETY OF MECHANICAL ENGINEERS (ASME) CODES, AS APPLICABLE.
10. ALL WORK SHALL BE IN ACCORDANCE WITH THE LATEST EDITIONS OF THE AMERICAN SOCIETY OF CIVIL ENGINEERS (ASCE) CODES, AS APPLICABLE.
11. ALL WORK SHALL BE IN ACCORDANCE WITH THE LATEST EDITIONS OF THE AMERICAN SOCIETY OF ELECTRICAL ENGINEERS (ASEE) CODES, AS APPLICABLE.
12. ALL WORK SHALL BE IN ACCORDANCE WITH THE LATEST EDITIONS OF THE AMERICAN SOCIETY OF MECHANICAL ENGINEERS (ASME) CODES, AS APPLICABLE.
13. ALL WORK SHALL BE IN ACCORDANCE WITH THE LATEST EDITIONS OF THE AMERICAN SOCIETY OF CIVIL ENGINEERS (ASCE) CODES, AS APPLICABLE.
14. ALL WORK SHALL BE IN ACCORDANCE WITH THE LATEST EDITIONS OF THE AMERICAN SOCIETY OF ELECTRICAL ENGINEERS (ASEE) CODES, AS APPLICABLE.
15. ALL WORK SHALL BE IN ACCORDANCE WITH THE LATEST EDITIONS OF THE AMERICAN SOCIETY OF MECHANICAL ENGINEERS (ASME) CODES, AS APPLICABLE.
16. ALL WORK SHALL BE IN ACCORDANCE WITH THE LATEST EDITIONS OF THE AMERICAN SOCIETY OF CIVIL ENGINEERS (ASCE) CODES, AS APPLICABLE.
17. ALL WORK SHALL BE IN ACCORDANCE WITH THE LATEST EDITIONS OF THE AMERICAN SOCIETY OF ELECTRICAL ENGINEERS (ASEE) CODES, AS APPLICABLE.
18. ALL WORK SHALL BE IN ACCORDANCE WITH THE LATEST EDITIONS OF THE AMERICAN SOCIETY OF MECHANICAL ENGINEERS (ASME) CODES, AS APPLICABLE.
19. ALL WORK SHALL BE IN ACCORDANCE WITH THE LATEST EDITIONS OF THE AMERICAN SOCIETY OF CIVIL ENGINEERS (ASCE) CODES, AS APPLICABLE.
20. ALL WORK SHALL BE IN ACCORDANCE WITH THE LATEST EDITIONS OF THE AMERICAN SOCIETY OF ELECTRICAL ENGINEERS (ASEE) CODES, AS APPLICABLE.



PROJECT: TERMINAL ENHANCEMENT - PORTLAND INTERNATIONAL JETPORT
SHEET: FRAMING PLAN - LEVEL 3 - ZONE 7
DATE: 6-23-11
DRAWN BY: GEM
CHECKED BY: [Signature]
SCALE: AS SHOWN



FRAMING PLAN - LEVEL 3 - ZONE 7
SCALE: AS SHOWN

S02.03.07