



**Corporate Office**  
86 Industrial Park Rd, Ste 4  
Portsmouth, NH 03801  
207-286-8008 • Fax 207-286-2882

**Branch Office**  
200 International Dr, Ste 170  
Portsmouth, NH 03801  
603-427-0244 • Fax 603-430-2041

**STEEL OBSERVATION REPORT**

Project Name: TERMINAL ENHANCEMENT AT PORTLAND JETPORT Date: 11-16-20  
Client/Project #: 557-14 Time on Site: 2.9  
General Contractor: TURNER CONSTRUCTION Mileage: (26)  
Welding Contractor: JF STEELNS Tolls: 2.00

Approved Documents: TERMINAL ENHANCEMENT  
Location/Observations: ZONES, LEVEL 4

**TYPE OF WORK OBSERVED**

Bolted Connections: BEAM TO COLUMN

Visually checked and found complete

Shear Connections: \_\_\_\_\_

Visually checked and found acceptable

Welded Connections: \_\_\_\_\_

Visually checked and found acceptable

Decking (Mezzanine/Roof): \_\_\_\_\_

Visually checked and found acceptable

Joist Welds/Joist Bridging: \_\_\_\_\_


Visually checked and found acceptable

Puddle Welds: \_\_\_\_\_  
\_\_\_\_\_  
\_\_\_\_\_  Visually checked and found acceptable

Screw Attachments: \_\_\_\_\_  
\_\_\_\_\_  
\_\_\_\_\_  Visually checked and found complete

Other: \_\_\_\_\_  
\_\_\_\_\_  
\_\_\_\_\_  Visually checked and found acceptable  
 Visually checked and found complete

RWG&A personnel are represented on site solely to observe work of the identified contractors, to form opinions about the adequacy of those operations, and to report those opinions to RWG&A's client. The presence and activities of our field representative do not relieve any contractor from their obligations to meet contractual requirements. The contractor retains sole responsibility of site safety and the methods, operations, and sequences of construction.	Observations were verbally reported to: <i>RYAN DIXON, TURNER CONSTRUCTION</i>
	Construction Technologist/CWI: <i>George S Morrell</i>
	Print Name/Title George S Morrell CWI 04050311 QC1 EXP. 5/1/2013

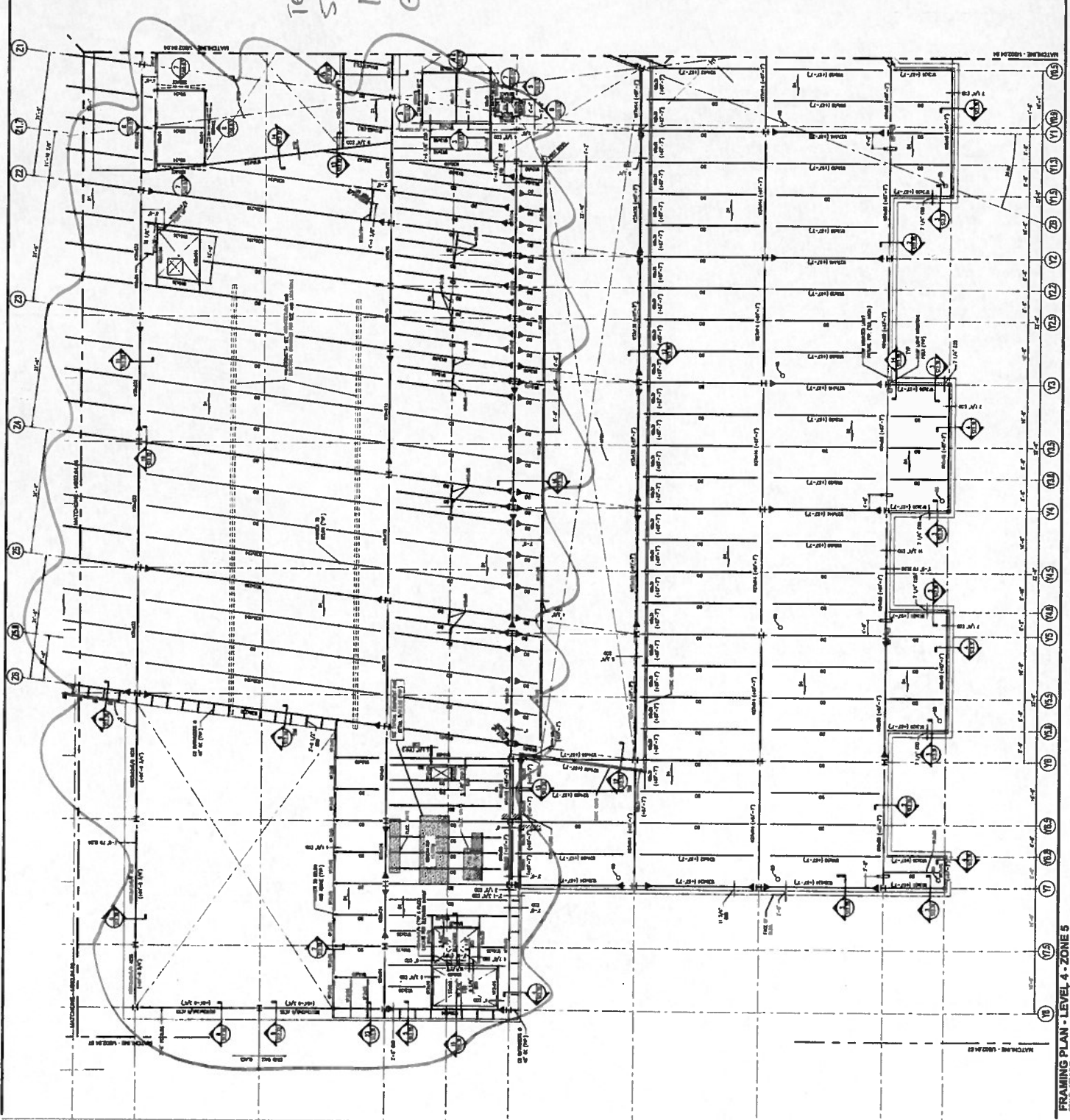
Certification #: 

*MS*

**SHEET NOTES**

1. REFER TO SHEET 501 FOR GENERAL NOTES.
2. REFER TO SHEET 502 FOR GENERAL NOTES.
3. REFER TO SHEET 503 FOR GENERAL NOTES.
4. REFER TO SHEET 504 FOR GENERAL NOTES.
5. REFER TO SHEET 505 FOR GENERAL NOTES.
6. REFER TO SHEET 506 FOR GENERAL NOTES.
7. REFER TO SHEET 507 FOR GENERAL NOTES.
8. REFER TO SHEET 508 FOR GENERAL NOTES.
9. REFER TO SHEET 509 FOR GENERAL NOTES.
10. REFER TO SHEET 510 FOR GENERAL NOTES.
11. REFER TO SHEET 511 FOR GENERAL NOTES.
12. REFER TO SHEET 512 FOR GENERAL NOTES.
13. REFER TO SHEET 513 FOR GENERAL NOTES.
14. REFER TO SHEET 514 FOR GENERAL NOTES.
15. REFER TO SHEET 515 FOR GENERAL NOTES.
16. REFER TO SHEET 516 FOR GENERAL NOTES.
17. REFER TO SHEET 517 FOR GENERAL NOTES.
18. REFER TO SHEET 518 FOR GENERAL NOTES.
19. REFER TO SHEET 519 FOR GENERAL NOTES.
20. REFER TO SHEET 520 FOR GENERAL NOTES.

TERMINAL ENHANCEMENT  
557-14  
11-16-10  
G75M



**GENERAL NOTES**

1. REFER TO SHEET 501 FOR GENERAL NOTES.
2. REFER TO SHEET 502 FOR GENERAL NOTES.
3. REFER TO SHEET 503 FOR GENERAL NOTES.
4. REFER TO SHEET 504 FOR GENERAL NOTES.
5. REFER TO SHEET 505 FOR GENERAL NOTES.
6. REFER TO SHEET 506 FOR GENERAL NOTES.
7. REFER TO SHEET 507 FOR GENERAL NOTES.
8. REFER TO SHEET 508 FOR GENERAL NOTES.
9. REFER TO SHEET 509 FOR GENERAL NOTES.
10. REFER TO SHEET 510 FOR GENERAL NOTES.
11. REFER TO SHEET 511 FOR GENERAL NOTES.
12. REFER TO SHEET 512 FOR GENERAL NOTES.
13. REFER TO SHEET 513 FOR GENERAL NOTES.
14. REFER TO SHEET 514 FOR GENERAL NOTES.
15. REFER TO SHEET 515 FOR GENERAL NOTES.
16. REFER TO SHEET 516 FOR GENERAL NOTES.
17. REFER TO SHEET 517 FOR GENERAL NOTES.
18. REFER TO SHEET 518 FOR GENERAL NOTES.
19. REFER TO SHEET 519 FOR GENERAL NOTES.
20. REFER TO SHEET 520 FOR GENERAL NOTES.

KEY PLAN

