

R. W. Gillespie & Associates, Inc.

86 Industrial Park Road, Suite 4, Saco, ME 04072 207-286-8008
200 International Drive, Suite 170, Portsmouth, NH 03801 603-427-0244

LETTER OF TRANSMITTAL

City of Portland, Portland Int. Jetport
1001 Westbrook Street
Portland, Maine 04102

Date:	22 June 2011	Project No.:	0557-014
Attention:	Mr. Cuyler Feagles (cmf@portlandmaine.gov)		
Re:	Concrete Testing Terminal Enhancement, Portland Int. Jetport Portland, Maine		

We are sending you attached concrete cylinder test results.	
Cylinder No. (s)	Age (Days)
68426	28
68427	28

Remarks:

Copy To:
Roy Williams: rsw@portlandmaine.gov
Jim Stanislaski: jim_stanislaski@gensler.com
Cliff Takara: clifford_takara@gensler.com
Lacey Fogg: Lacey.Fogg@amec.com
Mike Fusco: mfusco@tcco.com
Shaun Winner: swinner@tcco.com
Phil Coleman: pcoleman@tcco.com
Elizabeth O'Toole: eotoole@tcco.com
TMM@portlandmaine.gov
ldobson@portlandmaine.gov
rdixon@tcco.com
gemitchell@tcco.com
Remi Delcourt (remi@auburnconcrete.com)
Jeff Evans, Amec (jeff.evans@amec.com)

Signed: Bertha Dawn

If enclosures are not as noted, kindly notify us at once.

R.W. GILLESPIE & ASSOCIATES

86 Industrial Park Road, Suite 4, Saco, ME 04072 (207) 286-8008
 200 International Drive, Suite 170, Portsmouth, NH 03801 (603) 427-0244

CONCRETE TEST/PLACEMENT REPORT

Project Name:	Terminal Enhancement at the Portland Jetport	Date Cylinders Cast:	25-May-11
Project No:	0557-014	Concrete Supplier:	Auburn Concrete
Weather Conditions:	Sunny	General Contractor:	Turner
Method of Placement:	Rear Discharge	Design Strength:	4500 PSI
Admixtures:	Glenium 7500	Max. Aggregate Size:	3/4 In.
Placement Location:	Loading Dock SW Wall		
Test Cylinder Location:	Y8.5		

JUN 22 2011

Date Report Issued:

4x8 Cylinders	4	Cast By	Matt A O'Connor	Time	
Load No.	1	Slump (in)	ASTM C 143		5.5
Ticket No.	127279	Air (°F)		Batched @	2:00 PM
Truck No.	117	Concrete (°F)		Arrived @	2:15 PM
Cubic Yds.	6.5	Air Content (%)	ASTM C 231	Total Time	45 ±

*Concrete sampled by ASTM C 172

Specimen Storage ASTM C 31: Field Cure Days: 1
 Date Received: 26-May-11
 Condition of Cylinders: Good

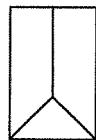
Lab No.	Test Date	Ave Dia (in)	Ave Area (in ²)	Age (Days)	Load (lbs)	Compressive Strength (psi)	Break Type
68425	1-Jun-11	4.020	12.69	7	67445	5310	5
68426	22-Jun-11	4.015	12.66	28	77370	6110	2
68427	22-Jun-11	4.015	12.66	28	75225	5940	2
68428	HOLD			H			

*Concrete compressive strength by ASTM C 39

Types of Breaks



Cone
1



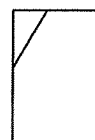
Cone & Split
2



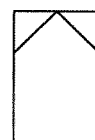
Columnar
3



Shear
4



Side Fracture
5



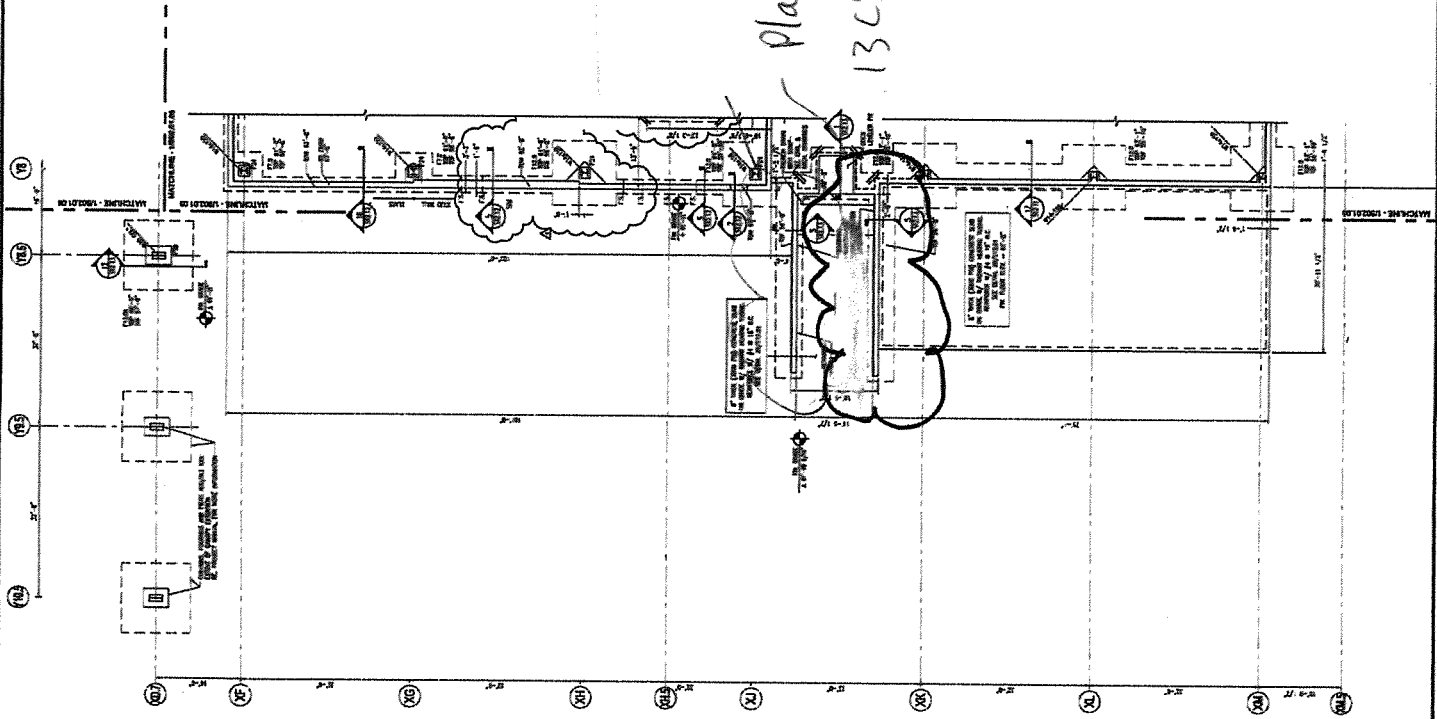
Double Side Fracture
6

Load	Ticket Number	Truck Number	Cubic Yds	Slump (inches)	Air Temp (°F)	Conc Temp (°F)	(%) Air Content	Time (min)
2	127281	115	6.5	--	--	--	--	60

Remarks: Curing Temperatures: High = 78°, Low = 63°

Checked by: Matthew T. Grady
 Matthew T. Grady, Manager of MTS

Terminal enhancement
 0557-014
 5/25/11
 MAO



Portland International
 Jetport
 1001 Westbrook Street
 Portland, Maine 04102

Gensler
 Gensler Associates, Inc.
 1000 Broadway, New York, NY 10018

SHEET NOTES
 1. GENERAL NOTES TO THE CONTRACT DOCUMENTS.
 2. CONTRACT DOCUMENTS TO BE USED AS SHOWN.
 3. CONTRACT DOCUMENTS TO BE USED AS SHOWN.
 4. CONTRACT DOCUMENTS TO BE USED AS SHOWN.
 5. CONTRACT DOCUMENTS TO BE USED AS SHOWN.
 6. CONTRACT DOCUMENTS TO BE USED AS SHOWN.
 7. CONTRACT DOCUMENTS TO BE USED AS SHOWN.
 8. CONTRACT DOCUMENTS TO BE USED AS SHOWN.
 9. CONTRACT DOCUMENTS TO BE USED AS SHOWN.
 10. CONTRACT DOCUMENTS TO BE USED AS SHOWN.

11. CONTRACT DOCUMENTS TO BE USED AS SHOWN.
 12. CONTRACT DOCUMENTS TO BE USED AS SHOWN.
 13. CONTRACT DOCUMENTS TO BE USED AS SHOWN.
 14. CONTRACT DOCUMENTS TO BE USED AS SHOWN.
 15. CONTRACT DOCUMENTS TO BE USED AS SHOWN.
 16. CONTRACT DOCUMENTS TO BE USED AS SHOWN.
 17. CONTRACT DOCUMENTS TO BE USED AS SHOWN.
 18. CONTRACT DOCUMENTS TO BE USED AS SHOWN.
 19. CONTRACT DOCUMENTS TO BE USED AS SHOWN.
 20. CONTRACT DOCUMENTS TO BE USED AS SHOWN.

21. CONTRACT DOCUMENTS TO BE USED AS SHOWN.
 22. CONTRACT DOCUMENTS TO BE USED AS SHOWN.
 23. CONTRACT DOCUMENTS TO BE USED AS SHOWN.
 24. CONTRACT DOCUMENTS TO BE USED AS SHOWN.
 25. CONTRACT DOCUMENTS TO BE USED AS SHOWN.
 26. CONTRACT DOCUMENTS TO BE USED AS SHOWN.
 27. CONTRACT DOCUMENTS TO BE USED AS SHOWN.
 28. CONTRACT DOCUMENTS TO BE USED AS SHOWN.
 29. CONTRACT DOCUMENTS TO BE USED AS SHOWN.
 30. CONTRACT DOCUMENTS TO BE USED AS SHOWN.

31. CONTRACT DOCUMENTS TO BE USED AS SHOWN.
 32. CONTRACT DOCUMENTS TO BE USED AS SHOWN.
 33. CONTRACT DOCUMENTS TO BE USED AS SHOWN.
 34. CONTRACT DOCUMENTS TO BE USED AS SHOWN.
 35. CONTRACT DOCUMENTS TO BE USED AS SHOWN.
 36. CONTRACT DOCUMENTS TO BE USED AS SHOWN.
 37. CONTRACT DOCUMENTS TO BE USED AS SHOWN.
 38. CONTRACT DOCUMENTS TO BE USED AS SHOWN.
 39. CONTRACT DOCUMENTS TO BE USED AS SHOWN.
 40. CONTRACT DOCUMENTS TO BE USED AS SHOWN.

41. CONTRACT DOCUMENTS TO BE USED AS SHOWN.
 42. CONTRACT DOCUMENTS TO BE USED AS SHOWN.
 43. CONTRACT DOCUMENTS TO BE USED AS SHOWN.
 44. CONTRACT DOCUMENTS TO BE USED AS SHOWN.
 45. CONTRACT DOCUMENTS TO BE USED AS SHOWN.
 46. CONTRACT DOCUMENTS TO BE USED AS SHOWN.
 47. CONTRACT DOCUMENTS TO BE USED AS SHOWN.
 48. CONTRACT DOCUMENTS TO BE USED AS SHOWN.
 49. CONTRACT DOCUMENTS TO BE USED AS SHOWN.
 50. CONTRACT DOCUMENTS TO BE USED AS SHOWN.

51. CONTRACT DOCUMENTS TO BE USED AS SHOWN.
 52. CONTRACT DOCUMENTS TO BE USED AS SHOWN.
 53. CONTRACT DOCUMENTS TO BE USED AS SHOWN.
 54. CONTRACT DOCUMENTS TO BE USED AS SHOWN.
 55. CONTRACT DOCUMENTS TO BE USED AS SHOWN.
 56. CONTRACT DOCUMENTS TO BE USED AS SHOWN.
 57. CONTRACT DOCUMENTS TO BE USED AS SHOWN.
 58. CONTRACT DOCUMENTS TO BE USED AS SHOWN.
 59. CONTRACT DOCUMENTS TO BE USED AS SHOWN.
 60. CONTRACT DOCUMENTS TO BE USED AS SHOWN.

61. CONTRACT DOCUMENTS TO BE USED AS SHOWN.
 62. CONTRACT DOCUMENTS TO BE USED AS SHOWN.
 63. CONTRACT DOCUMENTS TO BE USED AS SHOWN.
 64. CONTRACT DOCUMENTS TO BE USED AS SHOWN.
 65. CONTRACT DOCUMENTS TO BE USED AS SHOWN.
 66. CONTRACT DOCUMENTS TO BE USED AS SHOWN.
 67. CONTRACT DOCUMENTS TO BE USED AS SHOWN.
 68. CONTRACT DOCUMENTS TO BE USED AS SHOWN.
 69. CONTRACT DOCUMENTS TO BE USED AS SHOWN.
 70. CONTRACT DOCUMENTS TO BE USED AS SHOWN.

71. CONTRACT DOCUMENTS TO BE USED AS SHOWN.
 72. CONTRACT DOCUMENTS TO BE USED AS SHOWN.
 73. CONTRACT DOCUMENTS TO BE USED AS SHOWN.
 74. CONTRACT DOCUMENTS TO BE USED AS SHOWN.
 75. CONTRACT DOCUMENTS TO BE USED AS SHOWN.
 76. CONTRACT DOCUMENTS TO BE USED AS SHOWN.
 77. CONTRACT DOCUMENTS TO BE USED AS SHOWN.
 78. CONTRACT DOCUMENTS TO BE USED AS SHOWN.
 79. CONTRACT DOCUMENTS TO BE USED AS SHOWN.
 80. CONTRACT DOCUMENTS TO BE USED AS SHOWN.

81. CONTRACT DOCUMENTS TO BE USED AS SHOWN.
 82. CONTRACT DOCUMENTS TO BE USED AS SHOWN.
 83. CONTRACT DOCUMENTS TO BE USED AS SHOWN.
 84. CONTRACT DOCUMENTS TO BE USED AS SHOWN.
 85. CONTRACT DOCUMENTS TO BE USED AS SHOWN.
 86. CONTRACT DOCUMENTS TO BE USED AS SHOWN.
 87. CONTRACT DOCUMENTS TO BE USED AS SHOWN.
 88. CONTRACT DOCUMENTS TO BE USED AS SHOWN.
 89. CONTRACT DOCUMENTS TO BE USED AS SHOWN.
 90. CONTRACT DOCUMENTS TO BE USED AS SHOWN.

DATE: 5/25/11
 DRAWN BY: MAO
 CHECKED BY: [Signature]
 PROJECT: 0557-014
 SHEET: 102.01.07
 SCALE: AS SHOWN
 PROJECT NO.: 102.01.07

