

R. W. Gillespie & Associates, Inc.

86 Industrial Park Road, Suite 4, Saco, ME 04072 207-286-8008
200 International Drive, Suite 170, Portsmouth, NH 03801 603-427-0244

LETTER OF TRANSMITTAL

City of Portland, Portland Int. Jetport

1001 Westbrook Street

Portland, Maine 04102

Date:	23 Nov.2010	Project No.:	557-14
Attention:	Mr. Cuyler Feagles (cmf@portlandmaine.gov)		
Re:	Concrete Testing Terminal Enhancement, Portland Int. Jetport Portland, Maine		

We are sending you attached concrete cylinder test results.

Cylinder No. (s)	Age (Days)
67562	30
67563	30
67566	30
67567	30
67570	30
67571	30

Remarks:

Copy To:
Roy Williams: rsw@portlandmaine.gov
Jim Stanislaski: jim_stanislaski@gensler.com
Cliff Takara: clifford_takara@gensler.com
Lacey Fogg: Lacey.Fogg@amec.com
Mike Fusco: mfusco@tcco.com
Shaun Winner: swinner@tcco.com
Phil Coleman: pcoleman@tcco.com
Elizabeth O'Toole: eotoole@tcco.com
TMM@portlandmaine.gov
ldobson@portlandmaine.gov
rdixon@tcco.com
gemitchell@tcco.com
Remi Delcourt (remi@auburnconcrete.com)
Jeff Evans, Amec (jeff.evans@amec.com)

Signed: Bertha Dawn

If enclosures are not as noted, kindly notify us at once.

R. W. GILLESPIE & ASSOCIATES, INC.

86 Industrial Park Road, Suite 4, Saco, ME 04072 207-286-8008
200 International Drive, Suite 170, Portsmouth, NH 03801 603-427-0244

CONCRETE TEST/PLACEMENT REPORT

Project Name:	Terminal Enhancement, Portland Int. Jetport	Date Cylinders Cast:	23-Oct-10
Project No:	557-14	Concrete Supplier:	Auburn
Weather Conditions:	Sunny	General Contractor:	Turner
Method of Placement:	Pump	Design Strength:	3,500
Admixtures:	Mid Range Water Reducer, Glenium 7500, Pozzolith	Max Agg. Size:	3/8
Placement Location:	Slab On Deck 4-6		
Test Cylinder Location:	See attached sketch		

Date Report Issued ~~NOV 2~~ 2010

4x8 Cylinders	4	Cast by	Rodney R. Collard	Time	
Load No.	1	Slump (in) ASTM C 143	5	Batched @	6:45
Ticket No.	179907	Air (°F)	40	Arrived @	--
Truck No.	99	Concrete (°F) ASTM C 1064	54	Total Time	75
Cubic Yds.	10	Air Content (%) ASTM C 231	4		

*Concrete sampled by ASTM C 172

Specimen Storage ASTM C 31: Field cure days: 2
Date received 25-Oct-10
Condition of Cylinders: Good

Lab No.	Test Date	Avg Dia (in)	Area (in ²)	Age (Days)	Load (lbs)	Compressive Strength (psi)	Break type
67561	01-Nov-10	4.015	12.66	9	68,200	5390	2
67562	22-Nov-10	4.007	12.61	30	73,780	5850	2
67563	22-Nov-10	4.007	12.61	30	78,880	6260	2
67564	HOLD			HOLD			

*Concrete compressive strength by ASTM C 39

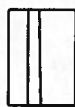
Types of Breaks



Cone
1



Cone & Split
2



Columnar
3



Shear
4



Side Fracture
5



Double Side Fracture
6

Load	Ticket Number	Truck Number	Cubic Yds	Slump (inches)	Air Temp (°F)	Conc Temp (°F)	(%) Air Content	Time (min.)
2	179908	76	10	--	--	--	--	65
3	179909	85	10	--	--	--	--	45
4	179910	84	10	--	--	--	--	65
5	179911	98	10	--	--	--	-	75

Remarks: Curing Temperatures: Max =62°, Min = 46°
12 Total Loads
Unit Weight = 124.2 pcf

Checked by: Matthew T. Grady
Matthew T. Grady, Manager of MTS

R. W. GILLESPIE & ASSOCIATES, INC.

86 Industrial Park Road, Suite 4, Saco, ME 04072 207-286-8008
 200 International Drive, Suite 170, Portsmouth, NH 03801 603-427-0244
CONCRETE TEST/PLACEMENT REPORT

Project Name:	Terminal Enhancement, Portland Int. Jetport	Date Cylinders Cast:	23-Oct-10
Project No:	557-14	Concrete Supplier:	Auburn
Weather Conditions:	Sunny	General Contractor:	Turner
Method of Placement:	Pump	Design Strength:	3,500
Admixtures:	Mid Range Water Reducer, Glenium 7500, Pozzoloth	Max Agg. Size:	3/8
Placement Location:	Slab On Deck 4-6		
Test Cylinder Location:	See attached sketch		

Date Report Issued: **NOV 23 2010**

4x8 Cylinders	4	Cast by	Rodney R. Collard	Time	
Load No.	6	Slump (in) ASTM C 143	5.5	Batched @	8:32
Ticket No.	179913	Air (°F)	41	Arrived @	--
Truck No.	86	Concrete (°F) ASTM C 1064	53	Total Time	85
Cubic Yds.	10	Air Content (%) ASTM C 231	3.25		

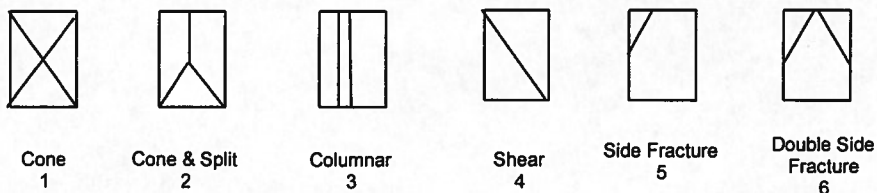
*Concrete sampled by ASTM C 172

Specimen Storage ASTM C 31: Field cure days: 2
 Date received 25-Oct-10
 Condition of Cylinders: Good

Lab No.	Test Date	Avg Dia (in)	Area (in ²)	Age (Days)	Load (lbs)	Compressive Strength (psi)	Break type
67565	01-Nov-10	4.015	12.66	9	72,200	5700	2
67566	22-Nov-10	4.007	12.61	30	80,800	6410	5
67567	22-Nov-10	4.007	12.61	30	81,800	6490	5
67568	HOLD			HOLD			

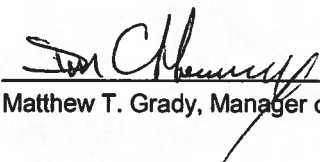
*Concrete compressive strength by ASTM C 39

Types of Breaks



Load	Ticket Number	Truck Number	Cubic Yds	Slump (inches)	Air Temp (°F)	Conc Temp (°F)	(%) Air Content	Time (min.)
7	179914	99	10	--	--	--	--	80
8	179915	76	10	--	--	--	--	75
9	179916	85	10	--	--	--	--	80
10	179917	84	10	--	--	--	-	85

Remarks: Curing Temperatures: Max =62°, Min = 46°
 12 Total Loads
 Unit Weight = 123.60 pcf

Checked by: 
 JTG Matthew T. Grady, Manager of MTS

R. W. GILLESPIE & ASSOCIATES, INC.

86 Industrial Park Road, Suite 4, Saco, ME 04072 207-286-8008
 200 International Drive, Suite 170, Portsmouth, NH 03801 603-427-0244

CONCRETE TEST/PLACEMENT REPORT

Project Name:	Terminal Enhancement, Portland Int. Jetport	Date Cylinders Cast:	23-Oct-10
Project No:	557-14	Concrete Supplier:	Auburn
Weather Conditions:	Sunny	General Contractor:	Turner
Method of Placement:	Pump	Design Strength:	3,500
Admixtures:	Mid Range Water Reducer, Glenium 7500, Pozzololith	Max Agg. Size:	3/8
Placement Location:	Slab On Deck 4-6		
Test Cylinder Location:	See attached sketch		

Date Report issued: NOV 23 2010

4x8 Cylinders	4	Cast by	Rodney R. Collard	
Load No.	11	Slump (in) ASTM C 143	4.75	Time Batched @ 9:27 Arrived @ -- Total Time 85
Ticket No.	179918	Air (°F)	47	
Truck No.	98	Concrete (°F) ASTM C 1064	60	
Cubic Yds.	10	Air Content (%) ASTM C 231	3.5	

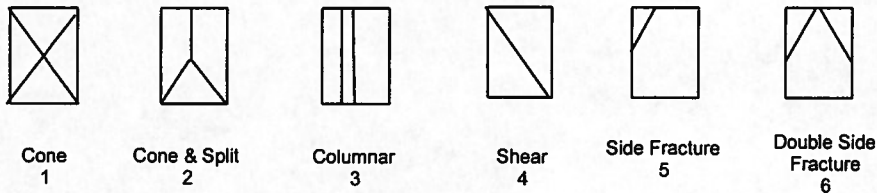
*Concrete sampled by ASTM C 172

Specimen Storage ASTM C 31: Field cure days: 2
 Date received 25-Oct-10
 Condition of Cylinders: Good

Lab No.	Test Date	Avg Dia (in)	Area (in ²)	Age (Days)	Load (lbs)	Compressive Strength (psi)	Break type
67569	01-Nov-10	4.015	12.66	9	63,180	4990	2
67570	22-Nov-10	4.007	12.61	30	69,480	5510	2
67571	22-Nov-10	4.007	12.61	30	69,220	5490	2
67572	HOLD			HOLD			

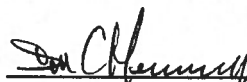
*Concrete compressive strength by ASTM C 39

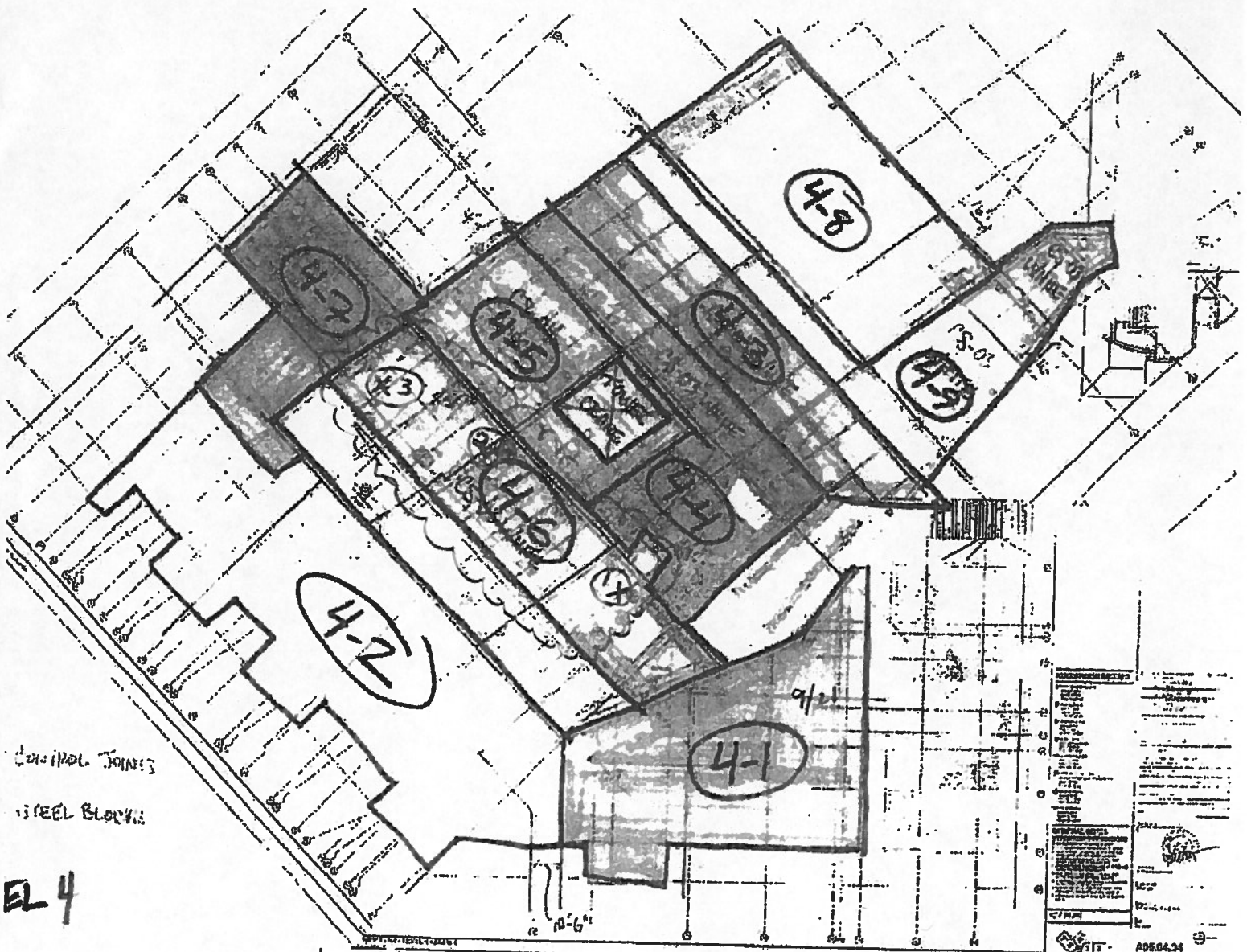
Types of Breaks



Load	Ticket Number	Truck Number	Cubic Yds	Slump (inches)	Air Temp (°F)	Conc Temp (°F)	(%) Air Content	Time (min.)
12	179919	86	10	--	--	--	--	90

Remarks: Curing Temperatures: Max =62°, Min = 46°
 12 Total Loads
 Unit Weight = 123.80 pcf

Checked by: 
 For Matthew T. Grady, Manager of MTS



CONCRETE JOINTS
STEEL BLOCKS

EL 4

PORTLAND JETPORT 557-14
 10/23/10 RODNEY COLLARD
 CONCRETE TESTS ON SLAB 4-6
 LIGHTWEIGHT WHITE CONCRETE

(X*) = CONCRETE TEST
 CYLINDER LOCATION