

R. W. Gillespie & Associates, Inc.

86 Industrial Park Road, Suite 4, Saco, ME 04072 207-286-8008
200 International Drive, Suite 170, Portsmouth, NH 03801 603-427-0244

LETTER OF TRANSMITTAL

City of Portland, Portland Int. Jetport

1001 Westbrook Street

Portland, Maine 04102

Date:	11 January 2011	Project No.:	557-14
Attention:	Mr. Cuyler Feagles (cmf@portlandmaine.gov)		
Re:	Concrete Testing Terminal Enhancement, Portland Int. Jetport Portland, Maine		

We are sending you attached concrete cylinder test results.

Cylinder No. (s)	Age (Days)
67971	28
67972	28
67975	28
67976	28

Remarks:

Copy To:

Roy Williams: rsw@portlandmaine.gov
Jim Stanislaski: jim_stanislaski@gensler.com
Cliff Takara: clifford_takara@gensler.com
Lacey Fogg: Lacey.Fogg@amec.com
Mike Fusco: mfusco@tcco.com
Shaun Winner: swinner@tcco.com
Phil Coleman: pcoleman@tcco.com
Elizabeth O'Toole: eotoole@tcco.com
TMM@portlandmaine.gov
ldobson@portlandmaine.gov
rdixon@tcco.com
gemitchell@tcco.com
Remi Delcourt (remi@auburnconcrete.com)
Jeff Evans, Amec (jeff.evans@amec.com)

Signed: Bertha Dawn

If enclosures are not as noted, kindly notify us at once.

R. W. GILLESPIE & ASSOCIATES, INC.

86 Industrial Park Road, Suite 4, Saco, ME 04072 207-286-8008
 200 International Drive, Suite 170, Portsmouth, NH 03801 603-427-0244

CONCRETE TEST/PLACEMENT REPORT

Project Name:	Terminal Enhancement, Portland Int. Jetport	Date Cylinders Cast:	14-Dec-10
Project No:	557-14	Concrete Supplier:	Auburn
Weather Conditions:	Overcast	General Contractor:	Turner
Method of Placement:	Pump	Design Strength:	3,000
Admixtures:	Mid Range Water Reducer	Max Agg. Size:	3/4
Placement Location:	5th Level: Curbs, Southeast Side, Northeast Side, Northwest Side 4th Level: Curbs, Northeast Side, Inside Stairway;		
Test Cylinder Location:	5th Level: Southeast Corner - See Attached Sketch	Date Report Issued:	

4x8 Cylinders	4	Cast by	Michael J. Kramlich		Time
Load No.	1	Slump (in) ASTM C 143	8.0		Batched @ 9:17
Ticket No.	166522	Air (°F)	30		Arrived @ 9:40
Truck No.	98	Concrete (°F) ASTM C 1064	60		Total Time 60±
Cubic Yds.	*10	Air Content (%) ASTM C 231	3.9		

*Concrete sampled by ASTM C 172

Specimen Storage ASTM C 31: Field cure days: 1
 Date received 15-Dec-10
 Condition of Cylinders: Good

Lab No.	Test Date	Avg Dia (in)	Area (in ²)	Age (Days)	Load (lbs)	Compressive Strength (psi)	Break type
67970	21-Dec-10	4.006	12.60	7	30,840	2450	2
67971	11-Jan-11	4.007	12.61	28	63,380	5030	2
67972	11-Jan-11	4.007	12.61	28	61,320	4860	5
67973	HOLD			HOLD			

*Concrete compressive strength by ASTM C 39

Types of Breaks



Cone
1



Cone & Split
2



Columnar
3



Shear
4



Side Fracture
5



Double Side Fracture
6

Load	Ticket Number	Truck Number	Cubic Yds	Slump (inches)	Air Temp (°F)	Conc Temp (°F)	(%) Air Content	Time (min.)

Remarks: Total loads = 2
 *Sent away after 5 cubic yards due to high slump.

Checked by: Matthew T. Grady
 For: Matthew T. Grady, Manager of MTS

R. W. GILLESPIE & ASSOCIATES, INC.

86 Industrial Park Road, Suite 4, Saco, ME 04072 207-286-8008
 200 International Drive, Suite 170, Portsmouth, NH 03801 603-427-0244

CONCRETE TEST/PLACEMENT REPORT

Project Name:	Terminal Enhancement, Portland Int. Jetport	Date Cylinders Cast:	14-Dec-10
Project No:	557-14	Concrete Supplier:	Auburn
Weather Conditions:	Overcast	General Contractor:	Turner
Method of Placement:	Pump	Design Strength:	3,000
Admixtures:	Mid Range Water Reducer	Max Agg. Size:	3/4
Placement Location:	5th Level: Curbs, Southeast Side, Northeast Side, Northwest Side 4th Level: Curbs, Northeast Side, Inside Stairway;		

Test Cylinder Location: 4th Level: Northeast Corner & 5th Level: Northwest Side - See Attached Sketch

Date Report Issued:

4x8 Cylinders	4	Cast by	Michael J. Kramlich	Time	
Load No.	2	Slump (in) ASTM C 143	5.5	Batched @	10:47
Ticket No.	166530	Air (°F)	28	Arrived @	11:05
Truck No.	116	Concrete (°F) ASTM C 1064	54	Total Time	85±
Cubic Yds.	10	Air Content (%) ASTM C 231	3.8		

*Concrete sampled by ASTM C 172

Specimen Storage ASTM C 31: Field cure days: 1

Date received 15-Dec-10

Condition of Cylinders: Good

Lab No.	Test Date	Avg Dia (in)	Area (in ²)	Age (Days)	Load (lbs)	Compressive Strength (psi)	Break type
67974	21-Dec-10	4.006	12.60	7	38,240	3030	6
67975	11-Jan-11	4.007	12.61	28	66,720	5290	2
67976	11-Jan-11	4.007	12.61	28	68,140	5400	6
67977	HOLD			HOLD			

*Concrete compressive strength by ASTM C 39

Types of Breaks



Cone
1



Cone & Split
2



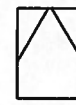
Columnar
3



Shear
4



Side Fracture
5

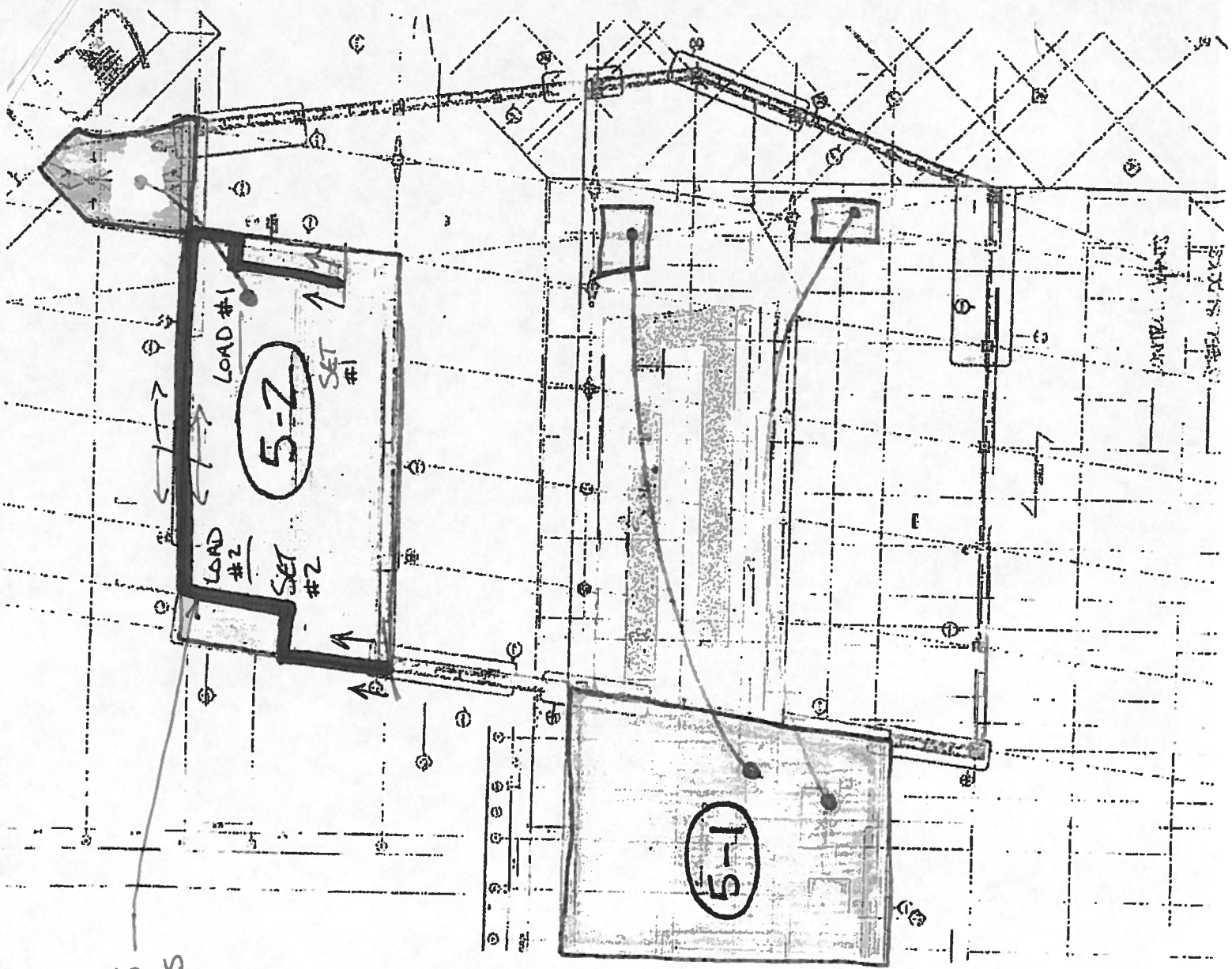


Double Side Fracture
6

Load	Ticket Number	Truck Number	Cubic Yds	Slump (inches)	Air Temp (°F)	Conc Temp (°F)	(%) Air Content	Time (min.)

Remarks: Total loads = 2

Checked by: Matthew T. Grady
 For Matthew T. Grady, Manager of MTS



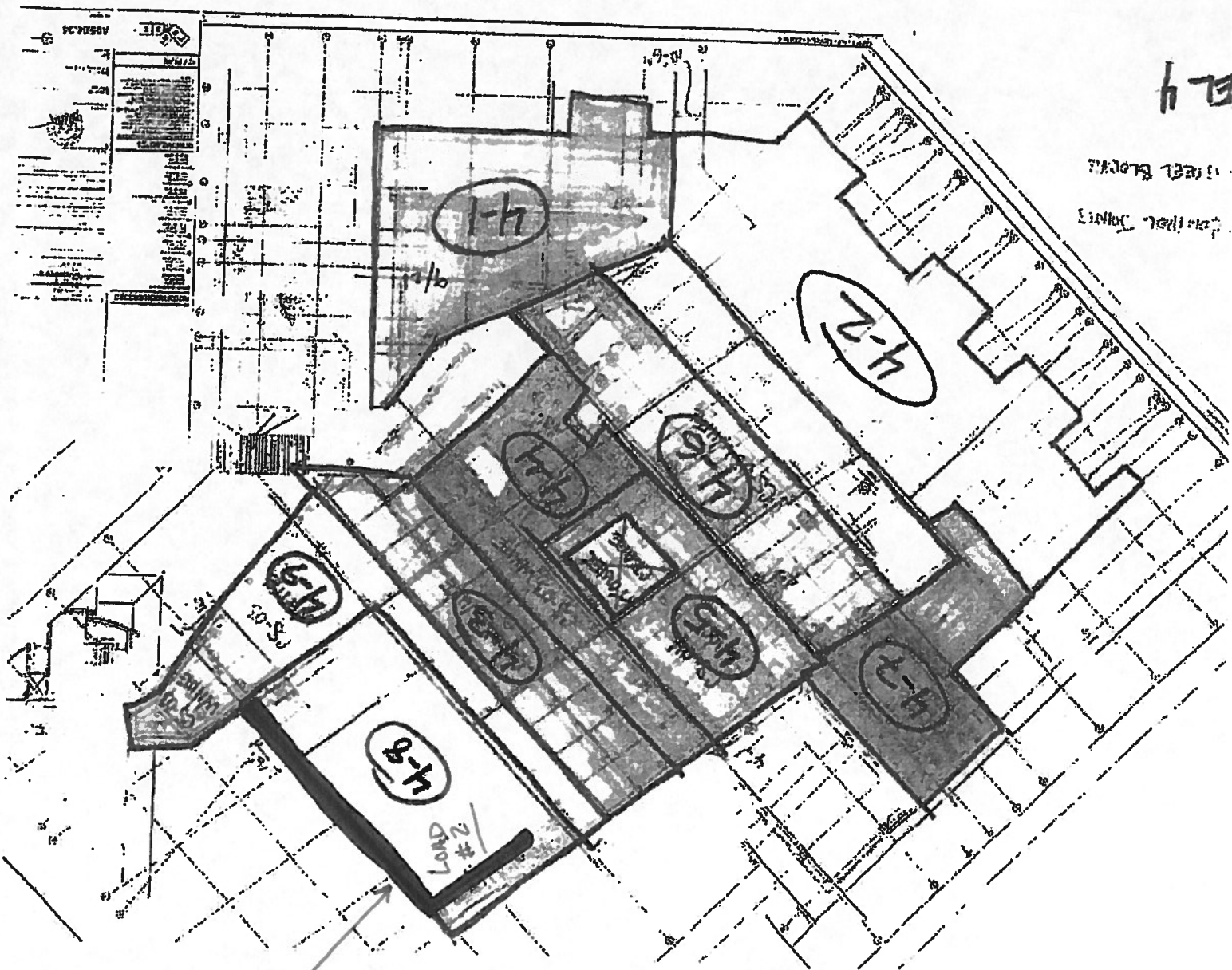
LVL 5
CURBS

Level 5

PORTLAND INT'L AIRPORT
 TERMINAL EXPANSION
 SS7-14
 2/14/2010
 15K

PORTLAND INT'L AIRPORT
TERMINAL EXPANSION

557-14
12/14/2010
MSK



4-4

11 FEET BLOCKS
10 FEET JOINTS

4TH LVL
CURBS

LAND
#2