

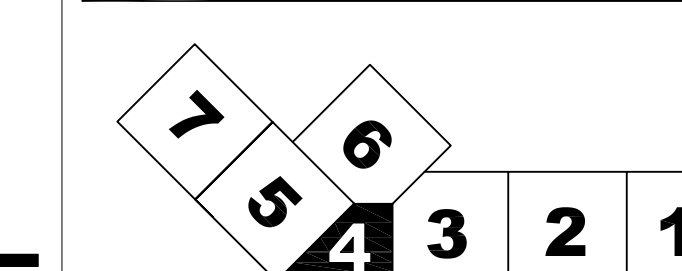
SHEET NOTES

- 01 1 DVC COMPUTER, 20 AMP QUAD RECEPTACLE FOR POWER, AND ONE 2 PORT DATA DUPLEX WILL BE HOUSED IN NEW LOCKABLE HOFFMAN NEMA 3 ENCLOSURE LOCATED ABOVE CEILING. ALL DVI CABLES WILL BE FED FROM THIS LOCATION THROUGH THE MOUNTING BRACKET TO THE INPUTS OF TWO SCREENS HUNG BACK TO BACK AT THIS LOCATION. 20 AMP CIRCUIT FOR THIS BOX TO BE INSTALLED BY ELECTRICAL CONTRACTOR.
- 02 CONTRACTOR TO MOUNT 40" CEILING MOUNT BACK TO BACK APPLICATION AT THE LOCATION SPECIFIED. ONE DVC WILL FEED ONE OF THESE SCREENS. THE OTHER SCREEN WILL BE FED THROUGH A LOOP IN LOOP OUT RGB CABLE FROM ONE SCREEN TO ANOTHER. CONTRACTOR TO PROVIDE SHOP DRAWINGS ON TYPICAL CONFIGURATION PRIOR TO THE START OF ANY WORK. REFER TO MF12.20 FOR FURTHER INFORMATION.
- 03 REFER TO DRAWINGS TC02.02,04 FOR CONDUIT PATH TO GATE COUNTERS FEEDS FROM MDF.
- 04 3 DVC COMPUTERS, 20 AMP QUAD RECEPTACLE FOR POWER, AND ONE 4 PORT DATA DUPLEX WILL BE CONTAINED IN TOP OF MILLWORK WITH REMOVABLE GRILL. ALL DVI CABLES WILL BE FED FROM THIS LOCATION TO THE INPUTS OF THREE SCREENS LOCATED AT MUFIDS BANK MU-CO3-01. EACH SCREEN WILL HOUSE A DUPLEX RECEPTACLE BEHIND EACH SCREEN LOCATION. POWER AND DATA CIRCUIT TO BE INSTALLED BY OTHERS.

GENERAL NOTES

- A REFER TO DRAWING TC00.00 FOR GENERAL NOTES, REQUIREMENTS, AND DEMOLITION NOTES.
- B ALL CONDUITS FOR DATA SHALL BE RUN CONCEALED WHERE POSSIBLE OR IF EXPOSED, SHALL BE RUN PARALLEL AND PERPENDICULAR TO BUILDING LINES AND PAINTED TO MATCH. LOCATION OF NEW DATA OUTLETS SHALL BE INSTALLED AT NEW MONITOR LOCATIONS AS INDICATED ON THE DRAWINGS AND SCHEDULES. ALL NEW PENETRATIONS OF CONDUITS THROUGH WALLS AND FLOOR SLABS SHALL BE SLEEVED AND PROPERLY SEALED WITH AN APPROVED AND RATED FIRE STOPPING MATERIAL. CONTRACTOR SHALL REPLACE ANY CEILING TILES DAMAGED BY WORK OF THIS CONTRACT.
- C CONTRACTOR SHALL CORE DRILL 1/4" PILOT HOLE PRIOR TO CORE DRILLING. CONTRACTOR SHALL TAKE PRECAUTIONS AS TO PROTECT AREA BENEATH CORE DRILL AREA AND HAVE PERSONNEL AT THIS AREA IN ORDER TO CATCH CORE AND WATER THAT MAY ENTER AREA BELOW. CONTRACTOR SHALL CLEAN AREA AFTER INSTALLATION.
- D LOCATION OF DATA OUTLETS ARE FOR REPRESENTATION PURPOSES ONLY AND DO NOT DEPICT EXACT LOCATION. CONTRACTOR SHALL INSTALL DATA OUTLETS ADJACENT TO NEW MONITORS/SCREENS/DVC'S AS REQUIRED AND MUST BE APPROVED BY THE ENGINEER.
- E E.C. SHALL PROVIDE DETAILED SHOP DRAWINGS (SIGNED AND SEALED BY PROFESSIONAL ENGINEER LICENSED IN THE STATE THE WORK WILL COMMENCE) FOR SUPPLEMENTAL STRUCTURAL MOUNTING BRACKET ASSEMBLIES/SUPPORTS REQUIRED TO MOUNT MONITORS/SCREENS AT PRECAST TEE LOCATIONS AND ALL OTHER CEILING/OVERHEAD STRUCTURE MOUNTING LOCATIONS. REFER TO SPECIFICATION MANUAL FOR MORE INFORMATION.
- F PRIOR TO INSTALLATION OF NEW SCREENS/DISPLAYS/MONITORS AND FIDS BANKS, THE E.C. SHALL VERIFY EXACT LOCATIONS OF SAME WITH THE PWM AND THE ENGINEER. CONTRACTOR SHALL SCHEDULE COORDINATION WALK-THRU WITH PWM/ENGINEER AS REQUIRED.
- G CONDUIT PATHWAY ROUTES ARE SHOWN DIAGMATICALLY. CONTRACTOR TO FIELD VERIFY THE EXACT ROUTE.
- H ALL COMMUNICATIONS CABLING, SHALL BE CONCEALED IN CONDUIT AND SIZED ACCORDINGLY NOT TO EXCEED THE 40% MAXIMUM FILL. SEE CONDUIT CAPACITY CHART ON DRAWING TC00.01.
- I ALL VOICE AND DATA CABLING SHALL TERMINATE IN THE MDF OR IDF ROOM AS INDICATED ON DRAWINGS TC12.05 AND TC12.06.
- J ADD AND SIZE JUNCTION BOXES AT CONDUIT INTERSECTIONS PER NEX 314 AND TIA/EIA STANDARDS FOR BED RADIUS.

KEY PLAN



Portland International Jetport
 1001 Westbrook Street
 Portland, Maine 04102

Gensler

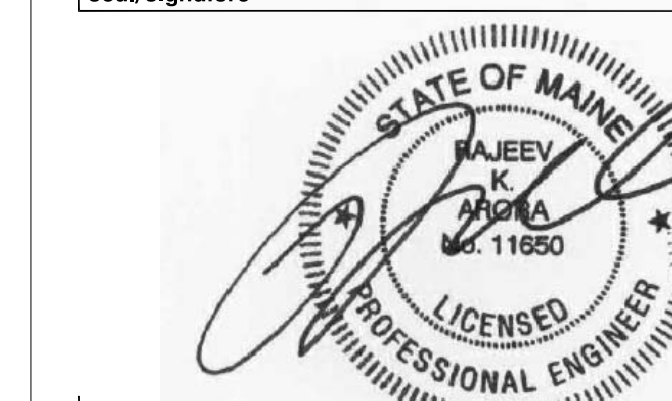
ARORA
 Solutions for Secure Environments

2020 K Street, Northwest
 Suite 200
 Washington DC 20006
 Telephone 202.721.5200
 Facsimile 202.872.8587

Arora Engineers, Inc.
 61 Wilmington - West Chester
 Suite # 100
 Chadds Ford, PA 19317
 T: (610) 459-7900
 F: (610) 459-7950

Issue	Date & Issue Description	By	Check
	10/26/09		
	100% ISSUED FOR PERMIT		

Seal/Signature



Project Name

PWM TERMINAL EXPANSION

Project Number

CAD File Name

MF02.03.04

Description

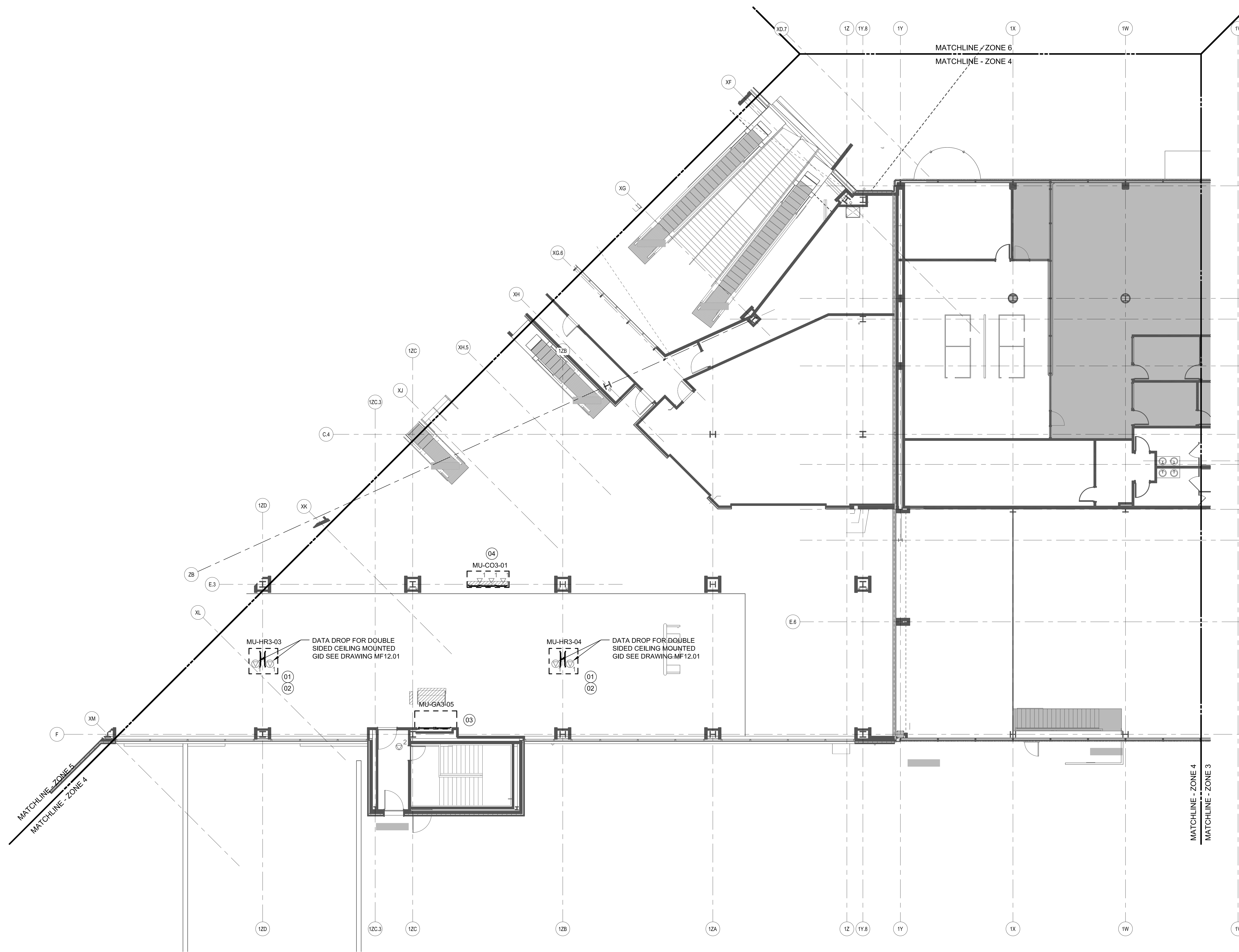
MUFIDS AND COMMON USE CONSTRUCTION PLAN - LEVEL 3 - ZONE 4

Scale

As Indicated

MF02.03.04

© 2006 Gensler



LEVEL 3 - ZONE 4

SCALE: 1/8"=1'-0"