

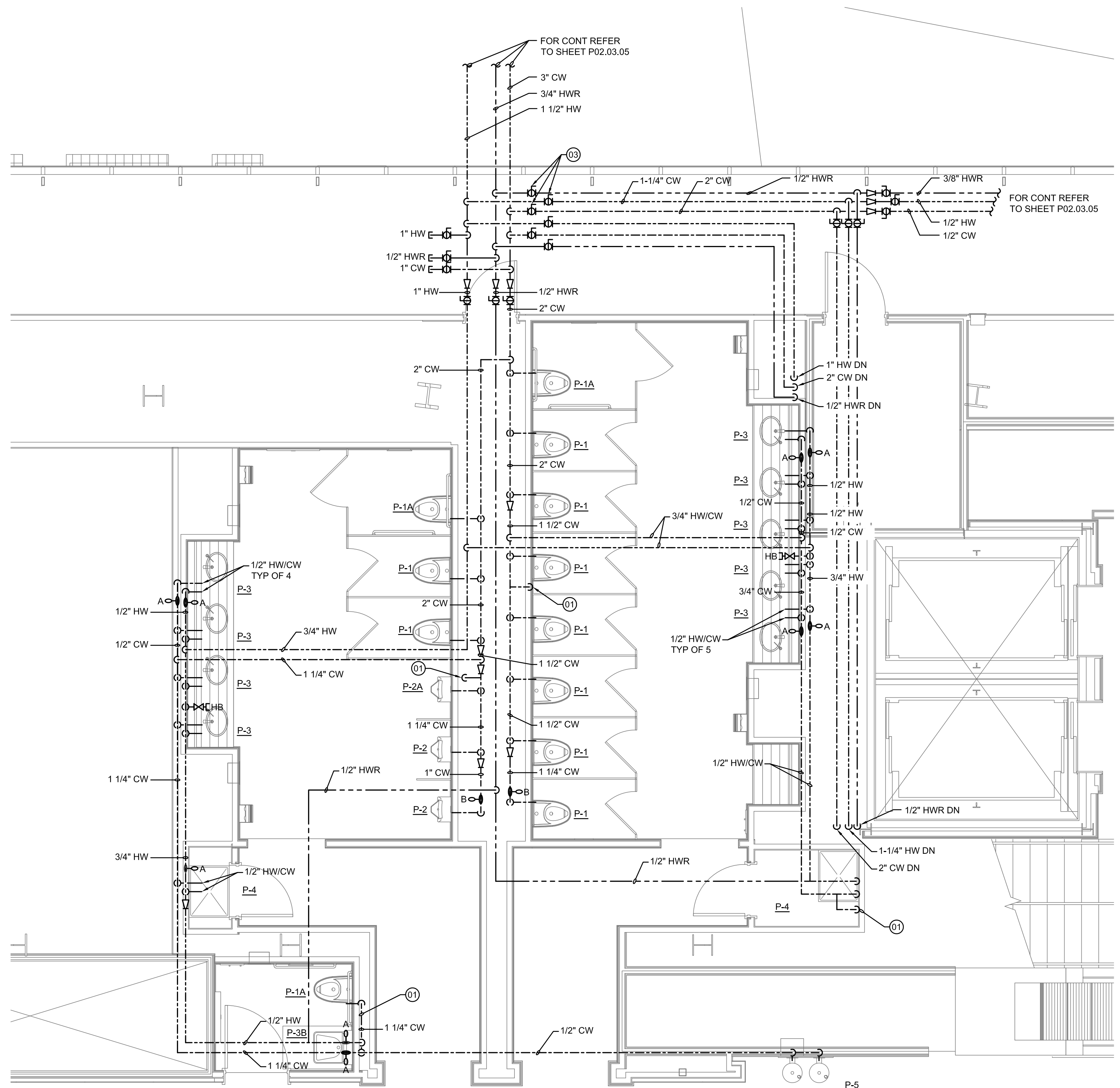
SHEET NOTES

- 01 1/2" CW DN W/ BALL VALVE TO TRAP PRIMER.
- 02 1/2" CW FROM TRAP PRIMER.
- 03 TAG "SERVES EMERGENCY FIXTURES" & PROVIDE LOCKING MECHANISM.

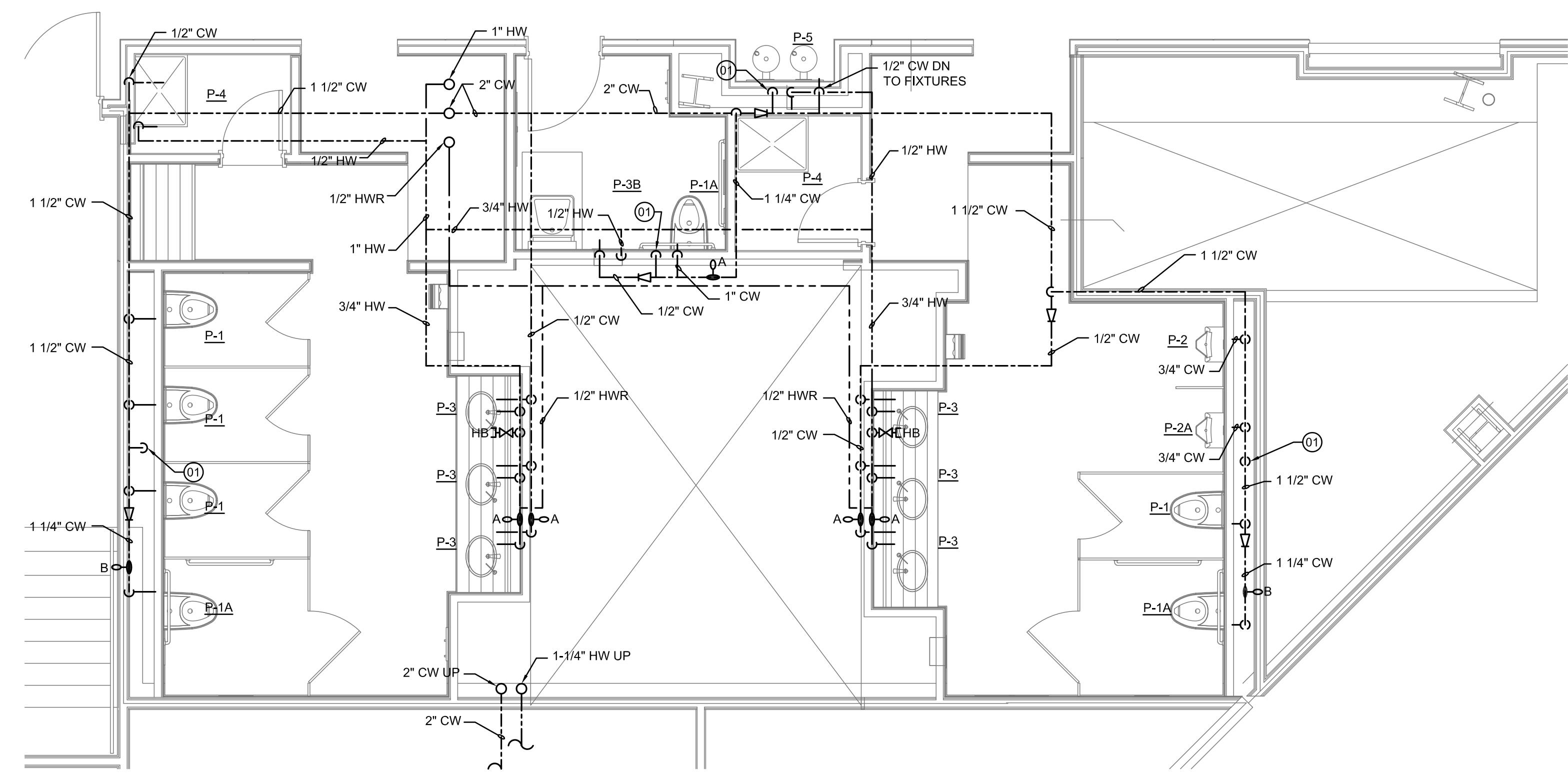
Portland International Jetport
 1001 Westbrook Street
 Portland, Maine 04102

Gensler
 2020 K Street, NW
 Suite 200
 Washington, DC 20006
 Telephone 202.721.5200
 Facsimile 202.872.8587

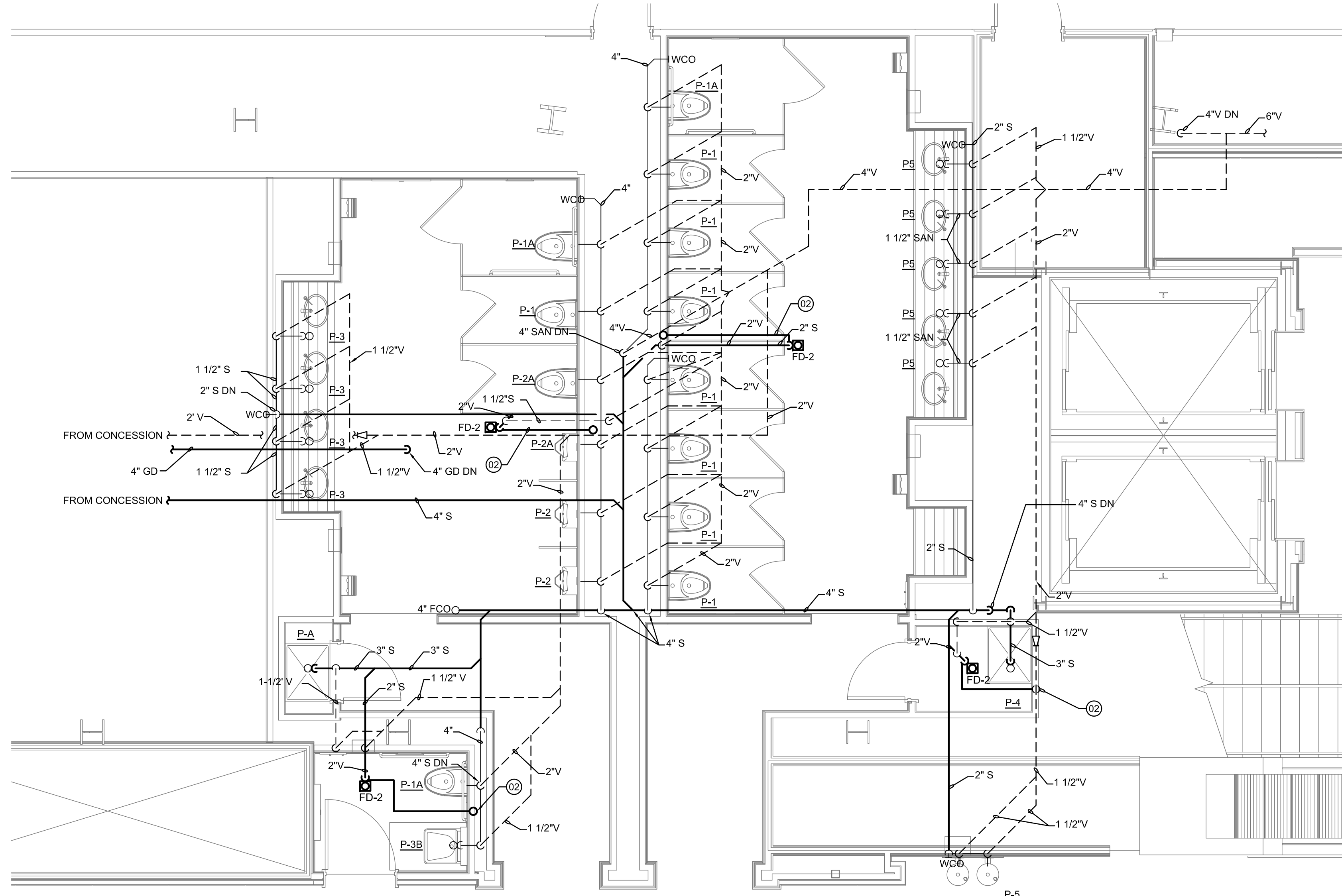
oest ASSOCIATES, INC.
 363 Gorton Road, South Portland, ME 04106 P (207) 741-1770 F (207) 774-2466 www.oest.com
 engineers • architects • surveyors • construction managers



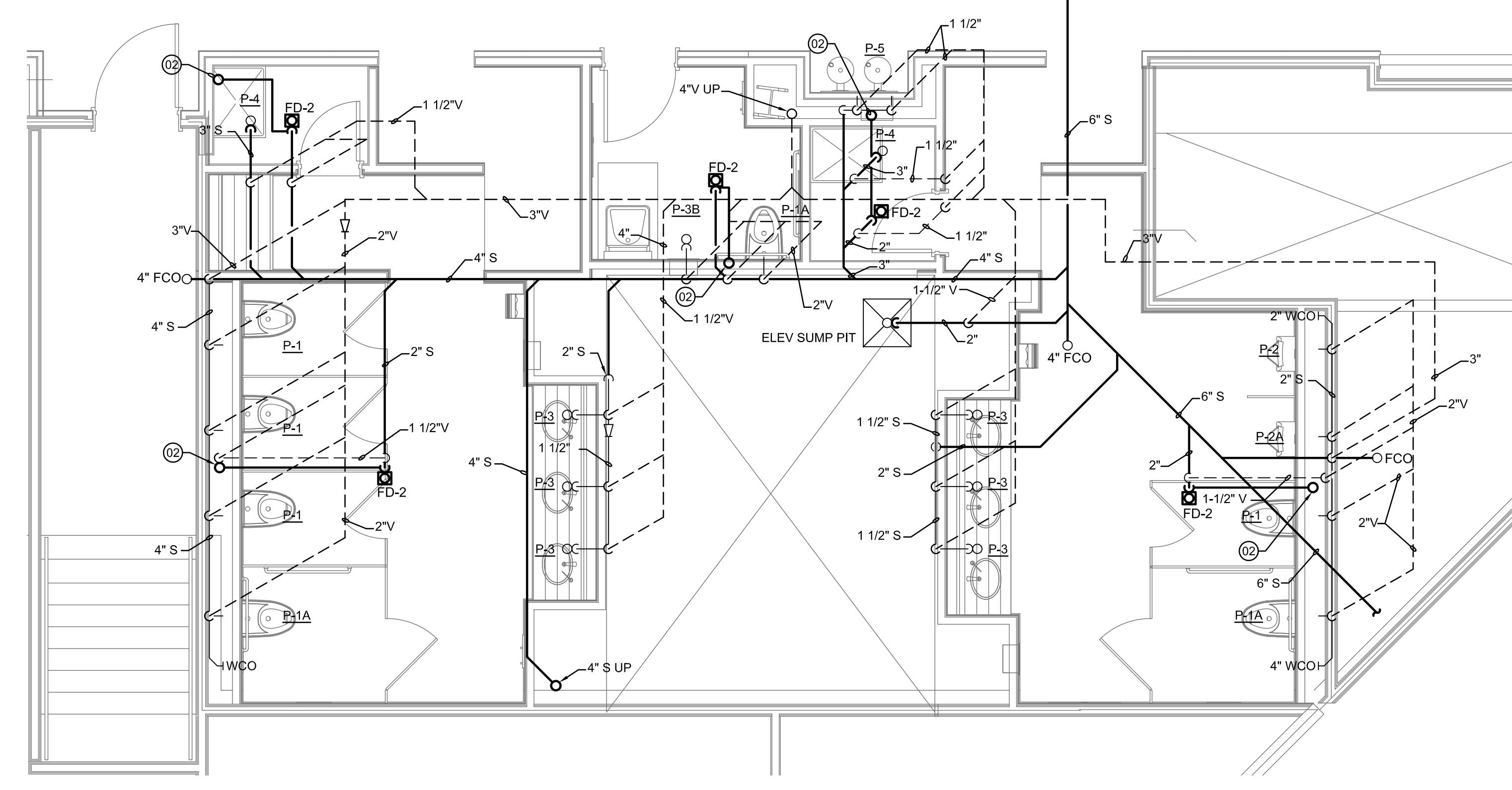
LEVEL 3 TOILET ROOMS DOMESTIC WATER ENLARGED PLAN
 SCALE: 1/4" = 1'-0" **4**



LEVEL 2 TOILET ROOMS DOMESTIC WATER ENLARGED PLAN
 SCALE: 1/4" = 1'-0" **2**



LEVEL 3 TOILET ROOMS DRAIN, WASTE & VENT ENLARGED PLAN
 SCALE: 1/4" = 1'-0" **3**



LEVEL 2 TOILET ROOMS DRAIN, WASTE & VENT ENLARGED PLAN
 SCALE: 1/4" = 1'-0" **1**

GENERAL NOTES

A SEE SHEET P00.00 FOR LEGEND AND GENERAL NOTES.

Issue	Date & Issue Description	By	Check
01	12/03/08	KLM	JS
02	01/23/09	CM	JS
02	10/26/09	PWZ	JS

Project Name
 PWM Terminal Enhancement

Project Number
 09-6395-000

CAD File Name
 T:\S330\101\Sheets\P08.01.dwg

Description
 PLUMBING ENLARGED PLANS

Scale
 1/4" = 1'-0"

P08.01

©2009 Gensler