

SHEET NOTES

- 01 TO STORM DRAIN SEE C02.02.
- 02 1/2" CW DN W/ BALL VALVE TO TRAP PRIMER.
- 03 3/4" HW & CW DN TO P-6.
- 04 3/4" CW W/ BALL VALVE DN TO NFHB.
- 05 BOTTOM OF PIPING INCLUDING INSULATION MUST BE KEPT ABOVE BOTTOM OF ADJACENT STEEL BEAM.
- 06 CONNECT TO EXIST 1 1/2" CW FEED TO EXIST RADIANT SNOW MELT SYSTEM W/ BALL VALVE.
- 07 1" DN W/ BALL VALVE & DRAIN TO HR-1
- 08 TERMINATE SRC 12" ABOVE FINISHED GRADE WITH DC.
- 09 RUN LINES TIGHT TO UNDERSIDE OF SOFFIT.
- 10 DROP LINES BELOW SOFFIT.
- 11 3/4" PEX BELOW FL TO NFHB
- 12 OFFSET 6" RC BELOW BEAM & RUN DN COLUMN.
- 13 RUN PIPING ON SIDES OF COLUMN, KEEP FACE OF COLUMN CLEAR FOR INSTALLATION OF SECURITY & ALARM EQUIPMENT & APPARATUS.

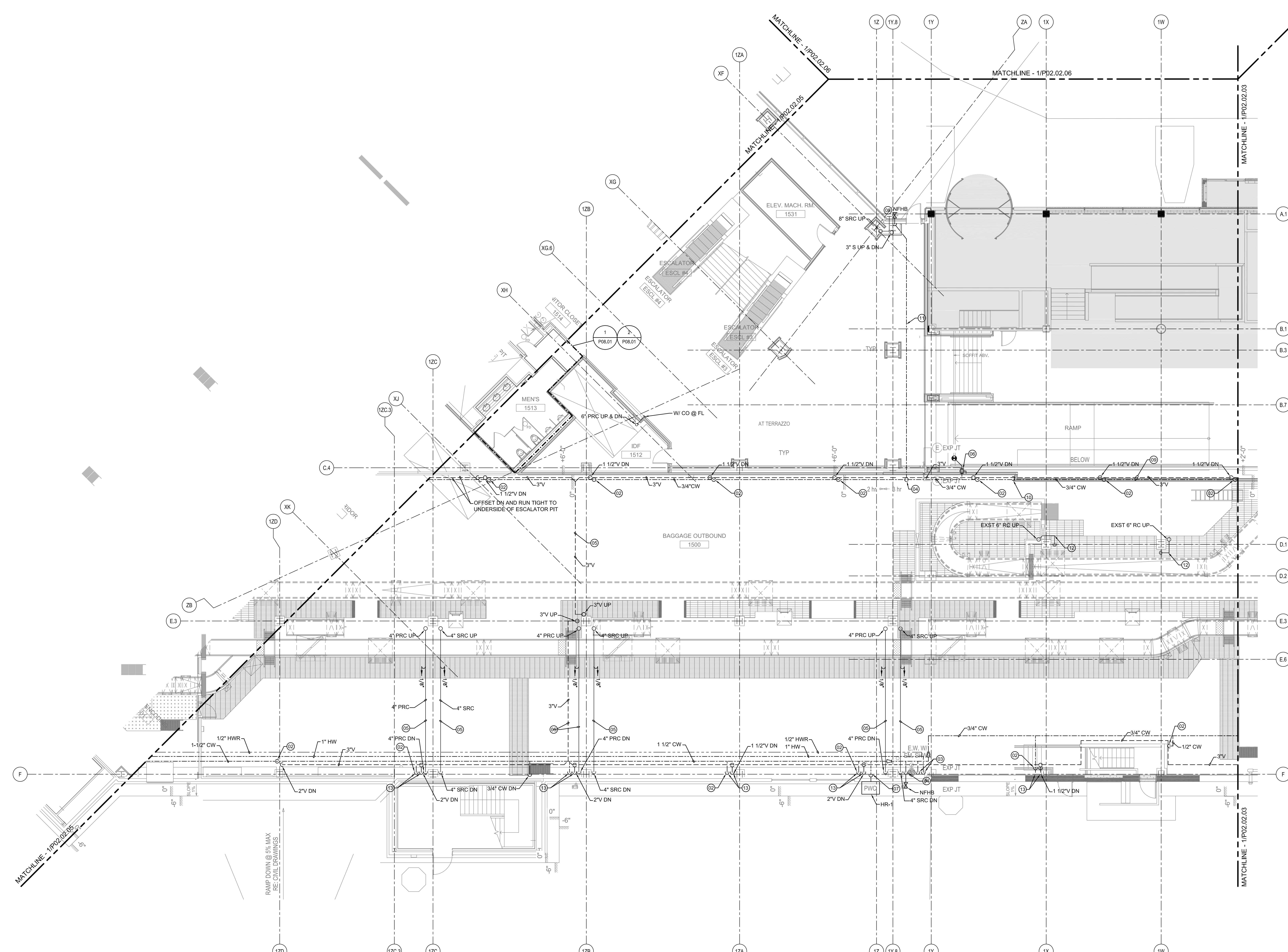
Portland International Jetport

1001 Westbrook Street
Portland, Maine 04102

Gensler

2020 K Street, NW
Suite 200
Washington, DC 20006
Telephone 202.721.5200
Facsimile 202.872.8587

oest ASSOCIATES, INC.
363 Goshen Road, South Portland, ME 04106 P (207) 741-1770 F (207) 774-2461 www.oest.com
engineers • architects • surveyors • construction managers

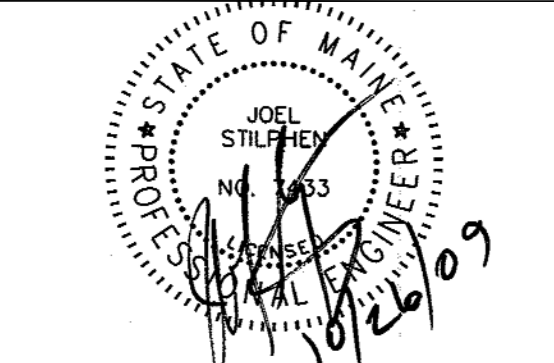


GENERAL NOTES

A SEE SHEET P00.00 FOR LEGEND AND GENERAL NOTES.

Issue	Date	Issue Description	By	Check
01	07/11/08		PWZ	JS
02	09/22/08	SCHEMATIC DESIGN	PWZ	JS
03	12/03/08	DESIGN DEVELOPMENT	KLM	JS
04	01/23/09	75% CONSTRUCTION DOCUMENTS	CM	JS
05	10/26/09	95% CONSTRUCTION DOCUMENTS	PWZ	JS
		ISSUED FOR PERMIT		

See Signature



Project Name
PJM Terminal Enhancement

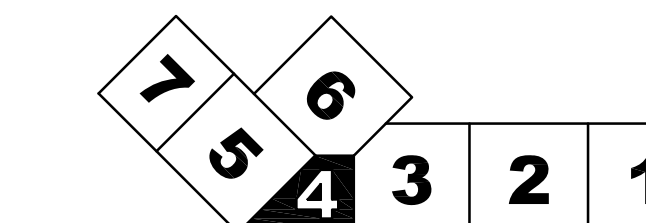
Project Number
09-6395-000
CAD File Name
T:\5330\101\Sheets\P02.02.04.dwg
Description
PLUMBING PLAN - LEVEL 2 - ZONE 4

Scale
1/8" = 1'-0"

P02.02.04

©2009 Gensler

KEY PLAN



PLUMBING PLAN - LEVEL 2 - ZONE 4
SCALE: 1/8" = 1'-0"