

SHEET NOTES

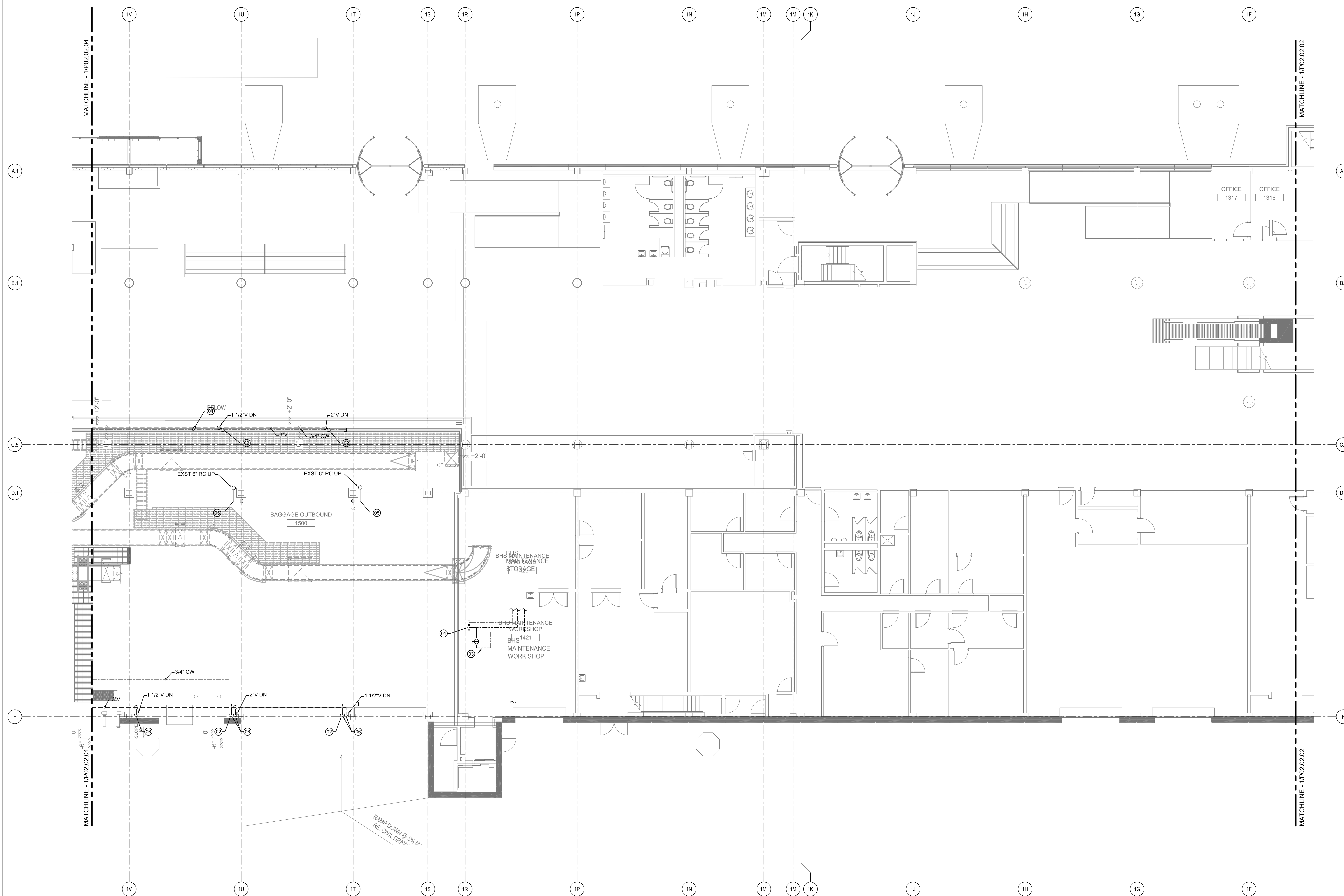
- 01 CAP & INSULATE EXIST. CW, HW & HWR LINES.
- 02 1/2" DN W/ BALL VALVE TO TRAP PRIMER.
- 03 PROVIDE 1/2" CONNECTION W/BALL VALVE BETWEEN HW & HWR.
- 04 RUN LINES TIGHT TO UNDERSIDE OF SOFFIT.
- 05 OFFSET 6" RC BELOW BEAM & RUN DN COLUMN.
- 06 RUN PIPING ON SIDES OF COLUMN, KEEP FACE OF COLUMN CLEAR FOR INSTALLATION OF SECURITY & ALARM EQUIPMENT & APPARATUS.

Portland International Jetport
 1001 Westbrook Street
 Portland, Maine 04102

Gensler

2020 K Street, NW
 Suite 200
 Washington, DC 20006
 Telephone 202.721.5200
 Facsimile 202.872.8587

nest ASSOCIATES, INC.
363 Goshen Road, South Portland, ME 04106 P: (207) 741-1770 F: (207) 774-2461 www.nest.com
 engineers • architects • surveyors • construction managers

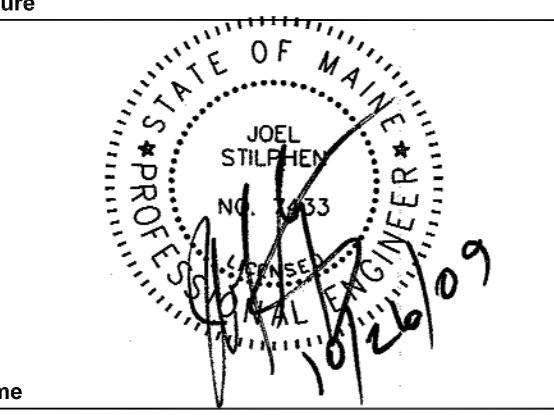


GENERAL NOTES

A SEE SHEET P00.00 FOR LEGEND AND GENERAL NOTES.

Issue	Date & Issue Description	By	Check
01	07/11/08	PWZ	JS
02	09/22/08	PWZ	JS
03	12/03/08	KLM	JS
04	01/23/09	CM	JS
05	10/26/09	PWZ	JS

Seed/Signature



Project Name
 PWM Terminal Enhancement

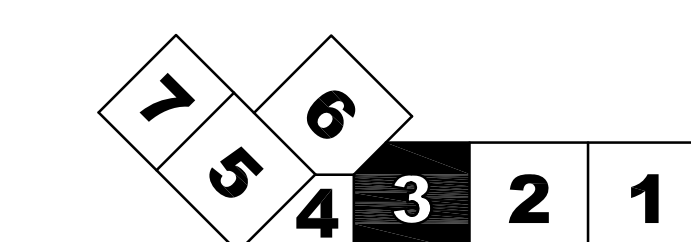
Project Number
 09-6395-000
 CAD File Name
 T:\6330\101\Sheets\P02.02.03.dwg
 Description
 PLUMBING PLAN - LEVEL 2 - ZONE 3

Scale
 1/8" = 1'-0"

P02.02.03

©2009 Gensler

KEY PLAN



PLUMBING PLAN - LEVEL 2 - ZONE 3
 SCALE: 1/8" = 1'-0"