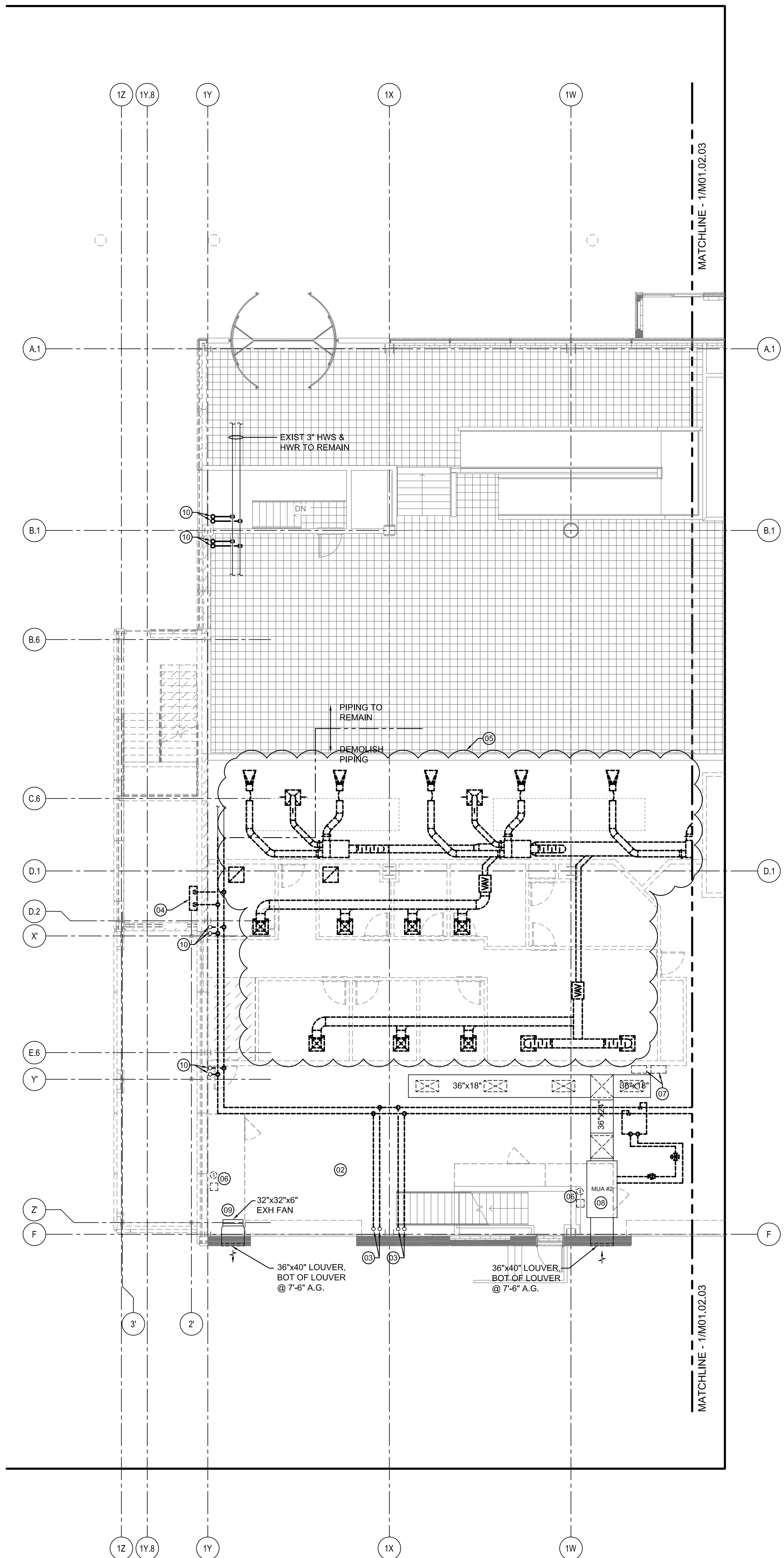


SHEET NOTES

- 01 REMOVE EXISTING RADIANT FLOOR MANIFOLD, PIPE AND CONTROLS.
- 02 REMOVE EXISTING RADIANT FLOOR TUBING FOR ENTIRE FLOOR.
- 03 REMOVE PIPE FROM BRANCH TO RISER AND STOP DEMOLITION AT ELBOW AT BOTTOM OF RISER. PIPE RISERS TO REMAIN.
- 04 REMOVE CABINET UNIT HEATERS AND PIPING.
- 05 REMOVE VAV BOX AND ASSOCIATED DUCTWORK, FITTINGS, HANGERS AND DIFFUSERS.
- 06 REMOVE SWITCH AND CONTROLS.
- 07 CAREFULLY REMOVE EXISTING DDC CONTROL PANEL AND ELECTRICAL BOXES, RELOCATE AS INDICATED ON NEW WORK DRAWINGS.
NOTE: DDC CONTROLS MUST BE KEPT OPERATIONAL.
- 08 REMOVE MAKEUP AIR UNIT, INCLUDING MAU, DUCTWORK, FITTINGS, HANGERS AND DIFFUSERS. DEMOLISH AND REMOVE WALL LOUVER.
- 09 REMOVE EXHAUST FAN, INCLUDING DUCTWORK, FITTINGS, AND HANGERS. DEMOLISH AND REMOVE WALL LOUVER.
- 10 REMOVE EXIST HWS & HWR UP TO DEMOLISHED FINETUBE RADIATION ON LEVEL 3.



GENERAL NOTES

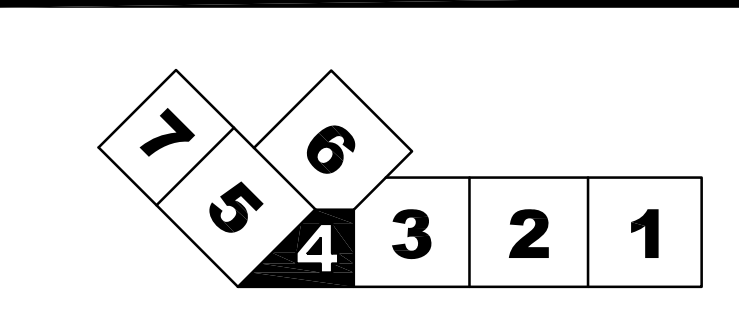
- A SEE SHEET M00.00 FOR LEGEND AND GENERAL NOTES.
- B CONTRACTOR SHALL FIELD VERIFY EXISTING DUCTWORK & PIPING PRIOR TO DEMOLITION.

Issue	Date & Issue Description	By	Check
01	01/23/09 95% DESIGN DEVELOPMENT	PWZ	RHB
02	10/26/09 ISSUED FOR PERMIT	PWZ	RHB

Seed/Signature

Project Name: PWM Terminal Enhancement
Project Number: 09-6395-000
CAD File Name: T:\5330101\Sheets\M01.02.04.dwg
Description: MECHANICAL DEMOLITION PLAN - LEVEL 2 - ZONE 4

KEY PLAN



Scale: 1/8" = 1'-0"
Ref. North

M01.02.04