

DESIGN CONDITIONS

Table with 3 columns: PORTLAND JETPORT, INSIDE, OUTSIDE. Rows for SUMMER and WINTER conditions.

NOTE: INSIDE CONDITIONS ARE FOR ADMIN. OFFICE, AND PUBLIC SPACES. OTHER SPACES SUCH AS BAGGAGE MAKEUP AREAS WILL VARY WITHIN RANGES.

CENTRIFUGAL CHILLER SCHEDULE

Table with columns: UNIT NO., LOCATION, COOLING (TONS), REFRIG. TYPE, COMPRESSOR QUANTITY, EVAPORATOR, CONDENSER, OPERATING WEIGHT LESS, ELECTRICAL DATA, OVERALL GRA, ASHRAE 90.1 COMPLIANT, MANUFACTURER AND MODEL NUMBER, NOTES.

NOTE: 1. FURNISH WITH VARIABLE FREQUENCY DRIVE. 2. CHILLER PLANT SIZED FOR PRESENT AND FUTURE LOADS. 3. FURNISH WITH SOUND ATTENUATING BLANKET.

MODULAR AIR HANDLING UNIT SCHEDULE

Table with columns: UNIT NO., LOCATION, FAN DATA, AIR DATA, WATER DATA, CHILLED WATER COIL DATA, RETURN FAN DATA, FILTERS.

NOTES: SEE CONTINUED SECTION OF SCHEDULE BELOW

MODULAR AIR HANDLING UNIT SCHEDULE (CONTINUED)

Table with columns: UNIT NO., SOUND PWR (dB RE:10^-12 WATTS) @ OCTAVE BAND & CENTER FREQ. (HZ), DISCHARGE, INLET AND CABINET, WEIGHT LB, ELECTRICAL DATA, DIMENSIONS L X W X H, MANUFACTURER AND MODEL NUMBER, NOTES.

NOTES: 1. FIXED PITCH BELT DRIVE FOR VARIABLE FREQUENCY DRIVE APPLICATION. 2. FURNISH WHICH EFFICIENCY DESIGN IS MOTOR. 3. FURNISH W/VPFD. 4. FURNISH W/ELECTRONIC AIR CLEANER EQUAL TO MERV 13 FILTERS AND 30% EFF PREFILTERS.

HOT WATER UNIT HEATER SCHEDULE

Table with columns: UNIT NO., TYPE, AREA SERVED, CFM, HEATING MBH, GPM, WATER TEMP °F, WPD FT/WG, AIR TEMP °F, MOTOR DATA, MANUFACTURER AND MODEL NUMBER, NOTES.

NOTES: 1. BAKED ENAMEL FINISH. 2. HIGH SPEED SETTING. 3. FURNISH AND INSTALL WALL MOUNTED TEMP SENSOR, SETPOINT 36°F. 4. FURNISH UNIT HEATERS WITH DISCONNECTS AND STARTERS.

EXPANSION TANK SCHEDULE

Table with columns: UNIT NO., SERVES, SYSTEM VOLUME GAL., MIN. OPERATE TEMP °F, MAX. OPERATE TEMP °F, MIN. FILL PRESS. PSIG, MAX. OPER. PRESS. PSIG, PRESS. RED VALVE, PRESS. RELIEF VALVE SETTING (PSIG), TANK ACCEPT. VOL. GALS., DIA. (IN), LENGTH (IN), WEIGHT (LBS) FULL, MANUFACTURER AND MODEL NUMBER, NOTES.

NOTES: 1. TANK SHALL BE HORIZONTALLY SUSPENDED FROM STRUCTURE. 2. ASME RATED FOR 125 PSIG.

HOT WATER FINTUBE RADIATION SCHEDULE

Table with columns: UNIT NO., ELEMENT, TUBE SIZE (IN.), ROWS, FINS PER FOOT, SIZE (IN), MOUNTING HEIGHT (IN), ENCLOSURE HEIGHT (IN), HW CAPACITY BTU/H/F, AVERAGE WATER TEMP °F, MANUFACTURER AND MODEL NUMBER, NOTES.

NOTE: 1. INSTALL CONCEALED IN PROVIDED ARCHITECTURAL ENCLOSURE. REFER TO DETAIL 6 ON SHEET A12.13

HOT WATER BOILER SCHEDULE

Table with columns: UNIT NO., FUEL, NET IFR RATING MBH, MINIMUM EFF. %, FLUE GAS SIZE (IN.), BURNER MOTOR HP, VOLTS, PHASE, HZ, MANUFACTURER AND MODEL NUMBER, NOTES.

NOTES: 1. IFR BURNER CAPACITY GPH = 40.5. 2. PROVIDE WEBSTER MODULATING BURNER WITH AUTOFLAME CONTROL. 3. FURNISH AND INSTALL EXHAUST VENT FAN SYSTEM AT TERMINATION OF BOILER STACK (ONE RSV 400 FAN AND ONE RSV 450 FAN, XTP CONTROLLER, CABLE AND STACK PROBE; 2807 DANFOSS VFD, 2815 DANFOSS VFD, EBC30 POWER SUPPLY, BEM OR BFF DAMPER, AND SCA FAN MOUNTING); PROVIDE 208V/3 PHASE ELECTRICAL SERVICE TO SYSTEM.

FAN SCHEDULE

Table with columns: UNIT NO., LOCATION, AREA SERVES, FAN TYPE, DRIVE TYPE, CFM, SP IN WG, HP (WATTS), FAN RPM, MOTOR RPM, ELECTRICAL DATA, SOUND PWR (dB RE:10^-12 WATTS) @ OCTAVE BAND & CENTER FREQ. (HZ), MANUFACTURER AND MODEL NUMBER, NOTES.

NOTES: 1. FURNISH W/BACK DRAFT DAMPER. 2. FURNISH W/4) SPRING VIBRATION ISOLATORS. 3. FURNISH W/5-5 SOLID STATE MOTOR SPEED CONTROLLER. MOUNT CONTROLLER AT FAN FOR BALANCING. 4. FURNISH W/INTEGRAL 277 MOTOR. 5. FURNISH W/MOTOR OPERATED DAMPER AND DISCONNECT. 6. YOKE MOUNT FAN. 7. FURNISH ROOF JACK WITH FAN. 8. FURNISH W/WHITE RODGERS THERMOSTAT MODEL 1A10-451. 9. INTERLOCK WITH REFRIGERANT MONITOR.

PUMP SCHEDULE

Table with columns: UNIT NO., TYPE, AREA SERVES, GPM, TOTAL HEAD (FT), MOTOR DATA, MANUFACTURER AND MODEL NUMBER, NOTES.

NOTES: 1. PUMP MOTOR CONTROLLED BY VFD. 2. 65% MINIMUM EFFICIENCY. 3. TYPICAL FOR 33. 4. TYPICAL FOR 9. 5. FURNISH WITH PUMP CONTROL PANEL AND IN-TANK PRESSURE TRANSDUCER. 7. FOR 40% GLYCOL SERVICE. 6. FURNISH CONCRETE INERTIA BASE AND MOUNT PUMP ON SAME.

FAN COIL UNIT SCHEDULE

Table with columns: UNIT NO., LOCATION, QTY, CFM @ HIGH SPEED, CHILLED WATER COIL, HOT WATER COIL, ELECTRICAL DATA, MANUFACTURER AND MODEL NUMBER, NOTE.

NOTE: 1 FURNISH WITH HIGH ESP MOTOR AND STARTER. 2. FURNISH WITH FRONT DUCT COLLAR AND BOTTOM STAMPED LOUVER. 3. FURNISH WITH FRONT AND BACK DUCT COLLARS.

COOLING TOWER SCHEDULE

Table with columns: UNIT NO., GPM, EWT °F, LWT °F, EAT WB °F, FANS, ELECTRICAL DATA, NOISE (dBA), MANUFACTURER AND MODEL NUMBER, NOTES.

NOTES: 1. FURNISH W/VPFD ON TOWER FAN. 2. FURNISH W/REMOTE SUMP. PLACE SUMP INSIDE MECHANICAL ROOM.

DAY TANK SCHEDULE

Table with columns: UNIT NO., CAP. GAL., DESCRIPTION, MANUFACTURER AND MODEL NUMBER, NOTE.

NOTE: 1. FURNISH WITH LEAK DETECTION SENSOR/ALARM LIGHT/PUMP. 2. FURNISH WITH NORMALLY CLOSED SOLENOID VALVE. 3. CUTOFF REMOTE CONTACTS FOR CONNECTION TO OWNERS BAS. (PRYCO OPTION 395).

SHEET NOTES

Portland International

Jetport

1001 Westbrook Street
Portland, Maine 04102

Gensler

2020 K Street, NW
Suite 200
Washington, DC 20006
Telephone 202.721.5200
Facsimile 202.872.8587



GENERAL NOTES

A SEE SHEET M00.00 FOR LEGEND AND GENERAL NOTES.

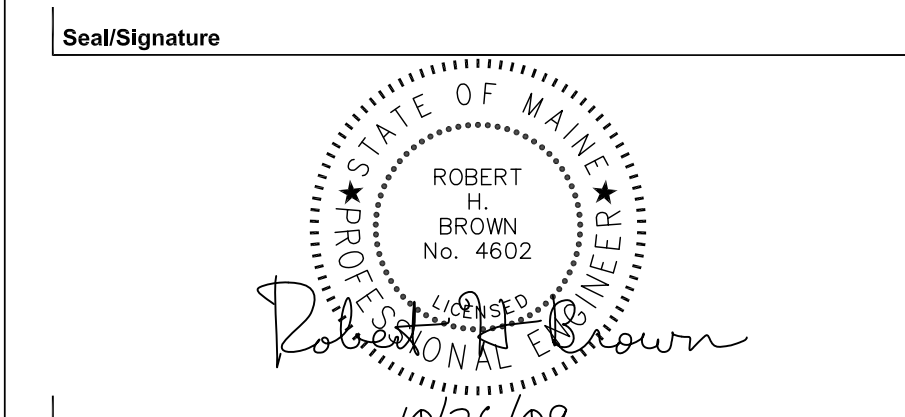
Table with columns: Issue, Date & Issue Description, By, Check. Rows for 01, 02, 02, 02.

DDC DESIGN PARAMETERS

Table with columns: IETM, ANALOG POINTS, DIGITAL POINTS, SYSTEM CONTROL/ALARM. Rows for AHU, CHILLERS, COOLING TOWERS, etc.

DDC ENERGY METERS

Table with columns: SERVICE, FUEL GAS, FUEL OIL, WATER, KW HRS, AIRFLOW.



Project Name
PJM Terminal Enhancement

Project Number
09-8395-000
CAD File Name
T-8330/01/Sheet/M00.30.dwg
Description
MECHANICAL SCHEDULES

Scale
1"=1'

M00.30

©2009 Gensler

MECHANICAL SCHEDULES

SCALE: NOT TO SCALE